

SHRI MADHWA VADIRAJA INSTITUTE OF TECHNOLOGY AND MANAGEMENT

(A unit of Shri Sode Vadiraja Mutt Education Trust ®)
VISHWOTHAMA NAGARA, BANTAKAL, UDUPI

An Affiliated Institution

Affiliated to VTU, Belagavi, Approved by AICTE, New Delhi

Accredited by NBA (BE –CSE, ECE) and NAAC with A



SMVITM

MANDATORY DISCLOSURE

Table of Contents

| | | |
|-----|--|----|
| 1. | Name of the Institution | 1 |
| 2. | Name and address of the Trust and the Trustees | 1 |
| 3. | Name and Address of the Principal..... | 1 |
| 4. | Name of the Affiliating University | 1 |
| 5. | Governance | 2 |
| 6. | Programmes offered: | 7 |
| 7. | Faculty | 8 |
| 8. | Fee Structure | 9 |
| 9. | Admission | 11 |
| 10. | Admission Procedure | 11 |
| 11. | List of applicants (2023-24): | 12 |
| 12. | Results of Admission under Management Seats/Vacant Seats..... | 18 |
| 13. | Information on Infrastructure and other resources Available: | 24 |
| 14. | Placement and Training | 32 |

1. Name of the Institution

SHRI MADHWA VADIRAJA INSTITUTE OF TECHNOLOGY AND MANAGEMENT

Area: Vishwothama Nagara

Post: Bantakal

Dist: Udupi

Pin: 574 115

Telephone: 0820-2484182 / 7483031199 / 9611615001

Fax: 0820-2484184

2. Name and address of the Trust and the Trustees

Trust:

Shri Sode Vadiraja Mutt Education Trust (R)

Bhoovaraha Complex

Car Street, Udupi

Pin: 576 101

Phone: 0820-4294005

Trustees:

1. H. H. Shri Vishwavallabha Theertha Swamiji
President
Shri Sode Vadiraja Matha Education Trust
Car Street, Udupi, Pin: 576101
Phone: 0820-4294005
trust@sode-edu.in
2. Shri. P. Srinivasa Tantry
Vice President
Shri Sode Vadiraja Matha Education Trust
Car Street, Udupi, Pin: 576101
Phone: 0820-4294005
3. Shri. Rathnakumar
Secretary
Shri Sode Vadiraja Matha Education Trust
Car Street, Udupi, Pin: 576101
Phone: 0820-4294005
4. Prof. B. S. Revankar
Trustee
Shri Sode Vadiraja Matha Education Trust
Car Street, Udupi, Pin: 576101
Phone: 0820-4294005
5. Shri. H. V Gowthama
Trustee
Shri Sode Vadiraja Matha Education Trust
Car Street, Udupi, Pin: 576101

3. Name and Address of the Principal

Dr. Thirumaleshwara Bhat

Principal

0820-2589182 / 9449330555

principal@sode-edu.in

4. Name of the Affiliating University

Affiliated to Visvesvaraya Technological University, Belgaum, Karnataka State

5. Governance

Members of the Governing:

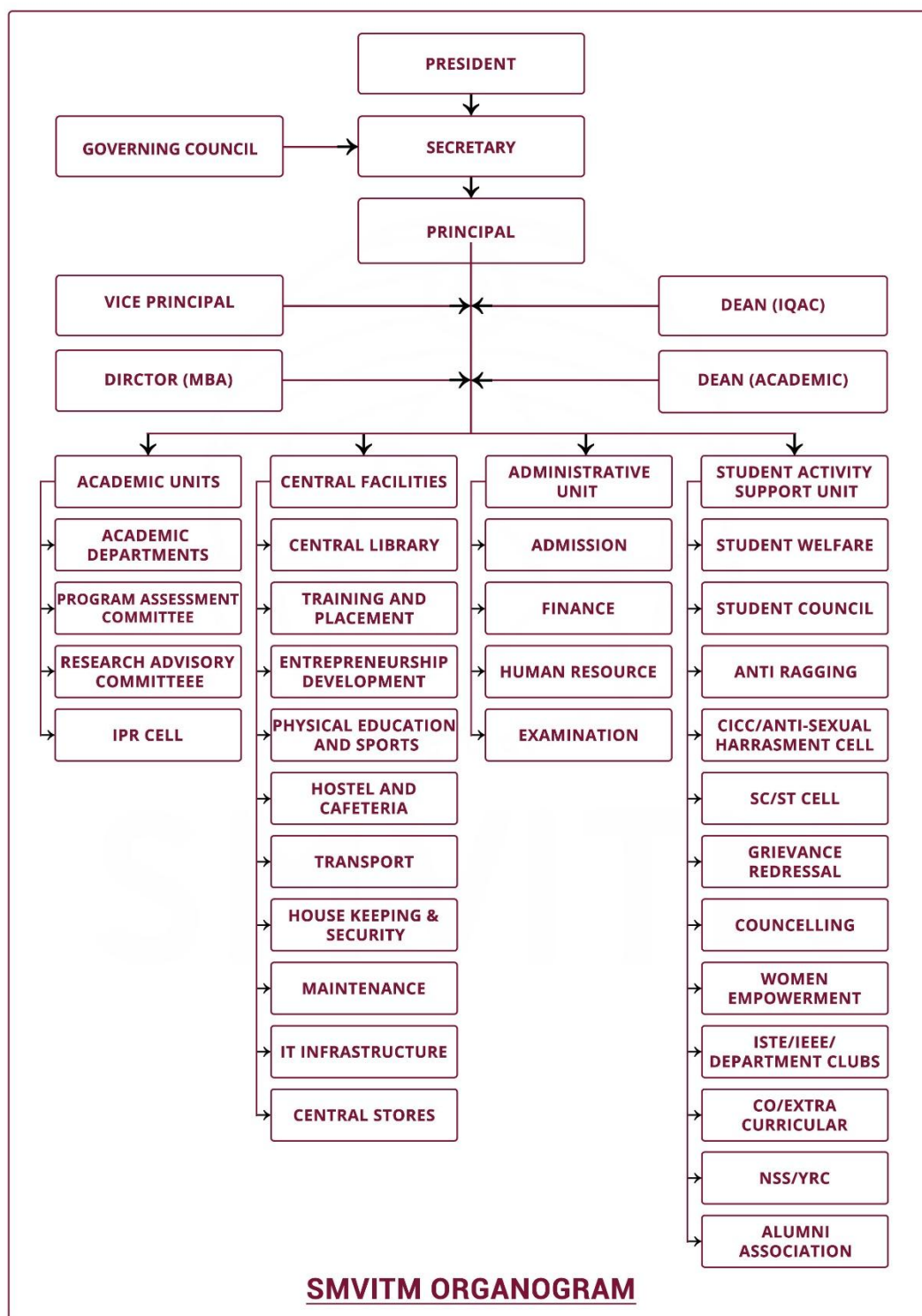
Members of the Governing Council and their brief background are as follows:

| Sl. No | Name | Designation / Profession |
|--------|--|--|
| 1 | H. H. Shri Vishwavallabha Theertha Swamiji | Chairman of the trust Pontiff of Shri Sode Vadiraja Matha |
| 2 | Shri. Rathnakumar | Secretary of the institute |
| 3 | Dr. Udipi Srinivas | Member of the Governing Council Former Professor, IISc, Bengaluru |
| 4 | Dr. S. G. Gopalakrishna | Member of the Governing Council Director, NCET Bengaluru |
| 5 | Shri. B. Y. Rajeshwar Singh | Member of the Governing Council Industrialist |
| 6 | Dr. Gopala Mugeraya | Member of the Governing Council Vice President (Technical), NITTE University |
| 7 | Shri. Sunder Madakshira | Member of the Governing Council Head, Marketing, Adobe India Pvt. Ltd., Bengaluru |
| 8 | Shri. P. Ramadas | Member of the Governing Council MD, Ace Manufacturing Systems Ltd. Bengaluru |
| 9 | Dr. M. S. Moodithaya | Member of the Governing Council Vice Chancellor, NITTE University |
| 10 | Dr. Radhakrishna S. Aithal | Member of the Governing Council Head, Skill Development Centre, Manipal |
| 11 | Shri. Jagadish Acharya | Member of the Governing Council Former CEO, Asian PPG |
| 12 | Shri. Harsih Belman | Member of the Governing Council Head, Premier Investments, Udupi |
| 13 | Shri. Nanda Kumar | Member of the Governing Council |
| 14 | Shri. Shamasundar H.S | Member of the Governing Council Paajaka Consultancy Services, Bengaluru |
| 15 | Dr. Ashwath M U | University Nominee Principal, BIT Bengaluru |
| 16 | Dr. P G Diwakar | Former Scientific Secretary, ISRO Bangalore |
| 17 | | Member of the Governing Council AICTE representative |
| 18 | | Member of the Governing Council Govt. of Karnataka representative |
| 19 | Dr. Thirumaleshwara Bhat | Member Secretary Principal of the Institute |
| 20 | Dr. Nagaraj Bhat | Staff Representative Professor, Dept. of Computer Science & Engg |

Frequency of the Board Meeting:

Bi-annually

Organizational chart and processes:



The institute is established by H. H. Shri Vishwavallabha Theertha Swamiji in the year 2010 with the objective of providing quality engineering education at an affordable cost. The Institution is managed by Shri Sode Vadiraja Mutt Education Trust ®, under the aegis of Shri Sode Vadiraja Matha, Udupi which is known for its service to society. To enhance and sustain quality professional education on par with the best in its class institution, a robust structure has been established.

The Governing Council (GC) is the chief policy-framing body of the Institute. The president of the Institute is the Chairman of the GC, which holds meetings at least twice a year and takes all policy decisions for the institute. The institute trust has members who have served the industry/academia for quite a long period. The Principal is the Secretary of the Governing Council.

The Principal and the Heads of Departments monitor the academic, administrative, and student-related matters in the Institute. Various committees coordinate the routine activities and work in the smooth functioning and development of the Institute.

Involvement of Faculty and students in academic affairs/improvements

Faculty Involvement:

Faculty members are involved in PAC (Programme Assessment Committee), DAB (Departmental Advisory Board), and IQAC (Internal Quality Assurance Cell) to solicit ideas and opinions to strengthen the system. In addition, faculty members are leading the different supportive committees for the smooth functioning of the Institution.

Student Involvement:

The Institute strongly believes in Outcome Based Education and involves the students in experiencing the authority and responsibilities and to ensure that the students imbibe graduate attributes adopted by the institute. All the students are provided a fair opportunity in all the affairs of the Institute, viz., curricular, co-curricular, and extracurricular activities.

The departments have a minimum of two students as representatives from each section to bring academic matters to the forum initially at the department level and the institutional level. All the departments conduct meetings with the student class representatives after every internal test to address academic-related matters. Apart from this, the Management conducts a yearly meeting with class representatives to solicit their opinions regarding academic and institutional facilities. All the departments have a department student chapter/society, professional associations, and various social clubs. The Head of the Department, staff, and students of the respective departments in consultation with the Principal choose the office bearers. In addition, the students are actively involved in the Outcome based Education system to strengthen and sustain the teaching-learning process. Student representatives are also involved in the PAC, DAB, and IQAC. Further, the institution ensures students' involvement in various institute-level academic and administrative committees to create a conducive environment for the overall development of the students and to understand ground reality from the student's perspective. Moreover, their association with these committees ensures improvement in the POs such as team building, professional ethics, and the role of an engineer in society, the environment, and sustainability.

The Students (chapter/forum) Associations such as IEEE, ISTE, Cultural Committee, Grievance Cell, Anti-ragging Committee, Sports Committee, NSS, YRC, NCC, etc. have student representatives to create proactive pupils.

Mechanism/ Norms and Procedure for Democratic/ Good Governance

Service Rules:

Service rules are prepared and approved by the Governing Council. The procedure of requirements, promotion policy, leave rules, etc. is explained in the service rules. The same is disseminated to all the faculty and staff. Printed books are made available with all the HODs and soft copy is made available on the institute website. Any changes made to the service rule are made known through circulars.

Service Rule Link: <https://sode-edu.in/uncategorized/service-rule/>

Policies:

The institute has well-defined rules, policies and procedures for the students and staff. Based on the need, amendments are made to the policies and procedures with prior information to the students and staff. The recruitment and promotional policies are also clearly defined. Following are the rules, procedures and policies of the institute.

Published rules:

| Rules | Applicable to | Publication and awareness | Year of Publication |
|---------------------------|--|---|--|
| University Rules | Students and staff | Published on the University website. Every student and faculty has access to the handbook published by VTU. | 2002, amended from time to time with information on the university website |
| Institute Rules | Students and staff | Published on the website. | 2010, amended from time to time with information on the university website |
| Service Rules | Faculty & Staff Members | Prepared by the institute and a copy of the same is available in every department and website | 2010, amended from time to time. A copy is available with the H.O.D's for the reference of faculty/ staff members. |
| Library Rules | Students and staff | Published on the website. | 2010, amended from time to time and displayed in the library |
| Regulations for Hostels | Hostel students | Published on the website and hostel notice boards | 2010, amended and given when joining the hostel, published in the hostel notice board |
| Rules for Internet access | Staff and Students | Published on the website and student notice board | 2016, amended from time to time. |
| Bus Transport Rules | Faculty & staff using transport facility | Published on the website and student notice board | 2012, Amended from time to time |

General Policies:

- Conduct, valuation, and documentation of internal examinations are organized by the Dean (Academics).
- Norms are established for student etiquette, behavior, and campus/hostel discipline.
- Appointment of staff is done by the Selection Committee, after ascertaining the qualifications, interview, and demonstration lectures.
- Financial/Administrative issues are routed through proper channels (HOD & Sections Heads) for approval by the Principal.
- The principal has full autonomy over academics, finance and implementation of various policies and procedures
- The HOD has autonomy over departmental matters and reports to the Principal.
- Discussion on Inter-departmental/Institute matters takes place in the Institute Council.
- All faculty allocations are approved by the Governing Council and all appointments are ratified by the Governing Council.
- Appointments are instituted only after due advertisement, interview, and demonstration to ensure fairness and transparency in the selection process.
- The role of the Principal in financial, administrative, and academic matters are well-defined.
- The posts of Vice Principal, Dean (Academics), and Dean (QA) are created to ensure autonomy and administrative ease. The Vice Principal is responsible for the overall administration in the absence of the Principal. In addition, the Vice Principal is responsible for promoting research, publication, incubation, and start-ups in the institute. Similarly, the Dean (Academics) will take care of all academic-related matters and the Dean (QA) is responsible for the quality assurance and accreditation.
- There is a periodic revision in pay scale/allowances and the same is to be approved by the Governing Council.
- The designation and promotion of faculty is strictly as per AICTE norms, and the institute has a promotion policy as well (published in the service rule)
- Depending on the performance appraisal, the staffs employed under training is absorbed into probation and permanent employment, The period of training/probation may be extended, if necessary, and promotions are according to AICTE regulations.
- The Institute has implemented a Performance Based Appraisal System (PBAS) for assessing the performance of the faculty and the promotion of the faculty/staff member is based on his/her performance and not by right. Similarly, incentives are sanctioned for good performers based on his/her performance/contribution.
- The Institute extends support to any faculty member pursuing a doctoral degree

Transparency in financial functions:

The Governing Council has authorized the Principal of the institute to deal with the financial aspects. The budget is prepared by each department before the commencement of each financial year, and the same is discussed in the Governing Council (GC) before giving its approval. The investment in infrastructure and facilities and the purchase of equipment and services for various departments are placed before the GC. This Committee decides on investment in infrastructure and facilities. The Principal will discuss and decide the various requirements of the institute and place the same before the Secretary for approval. Approval by the secretary for all major purchases, and investments is mandatory.

Payment of Salary and Mandatory Payments: The salary is paid on the 5th day of every month and it is approved by the Secretary. All mandatory payments such as Provident Fund, Income Tax, ESI contribution..etc shall be paid on or before the 15th of every month.

Deputation for research/post-doctorate/FDPs/Workshops: The faculty member shall submit a formal request for any of the career advancement schemes to the respective HOD. Based on the recommendation by the HOD, the Principal will approve the requests. Permission from the Secretary is required for deputing faculty member(s) for which the expenses are more than 15,000 per faculty.

Financial power to the HODs: The Heads of various departments are permitted to spend Rs. 15,000 on simple equipment/facilities/books. etc required for the classes/laboratories.

Transparency in academic functions:

- The academic rules and regulations of the Institute are published on the Institute's website. A copy of the hostel rules and regulations is given to each student at the time of admission and the same is displayed on the hostel notice board
- Any changes to the rules and regulations are intimated to the staff and students through circulars displayed on notice boards and very important information is read out in the classrooms
- The Institute strictly follows the rules and regulations of the University, which are available on the University website
- The student's attendance in each subject, marks scored on the test, and end-semester examination marks and grades are displayed on the notice board and also shared with the parents from time to time.
- The students are permitted to go through their assessment books and inform them of any discrepancies to the concerned teacher. If it is disregarded by the faculty, they can approach the HOD and the Principal

Transparency in administration and auxiliary functions:

- All administrative decisions are taken by the GC of the institute, and administrative decisions related to the functioning of the institute are communicated to the HODs and section heads
- Administrative decisions related to staff members are communicated to them during general staff meetings, which are held twice a semester
- Changes in pay scale and allowance patterns are declared in general staff meetings and are strictly followed by the Management
- Service registers are maintained for each faculty member and a copy of the letter issued to a staff member is kept in an individual file, which is maintained by the HR department
- The audited balance sheet of the Institute is available on its website
- The admission policies are made clear on the website and are also displayed at the entrance of the administrative block
- The Institute has provided email facilities to all faculty, staff, and students. The concerned authorities will share administration information through e-mail if the need arises

Statutory Committee/Cell

The following committees/cells are formed for the support of staff and students.

- Institutional Grievance Redressal Cell : <https://sode-edu.in/associations/grievance-redressal-cell/>
- Anti Ragging Committee & Squad : <https://sode-edu.in/associations/anti-ragging-committee/>
- Online Grievance Redressal Mechanism : <https://sode-edu.in/grievance-form/>
- College Internal Compliance Committee: <https://sode-edu.in/associations/cicc/>
- SC/ST/OBC Cell : <https://sode-edu.in/associations/sc-st-obc-cell/>
- Internal Quality Assurance Cell: <https://sode-edu.in/associations/quality-assurance-cell/>

Student Feedback on Institutional Governance/ Faculty Performance:

The institute has adopted a well-organized feedback collection process through the online system using MIS. The students do not reveal their identity in the feedback process. The Dean (Academics) initiates and concludes the feedback collection through his office. The feedback is collected from the student at the end of the semester. All the comments written by the students are shared with the faculty members. This will help the faculty members to understand their strengths and weaknesses. The following three types of feedback are used to enhance the teaching-learning process at the end of every semester.

Feedback process at SMVITM

| Feedback type | Frequency | Feedback collected from | Mode | Purpose |
|---|---------------------|---|----------------------------|--|
| Feedback on the teaching-learning process | Twice in a semester | All students | Online through MIS | To improve TLP |
| Course end survey | Once a semester | All students | Online through Google form | To improve TLP and CO assessment |
| Graduate survey | Once in a year | Final year students | Online through Google form | To improve TLP and PO assessment |
| Student Satisfaction survey | Once in a year | First, Second and Third-year students | Online through Google form | To improve TLP |
| Feedback on facility | Once in a year | Second and Third-year students | Online through Google form | To improve the institute's facility |
| Alumni survey | Once in a year | Institute Alumni | Online through Google form | To improve TLP and PEO assessment |
| Curriculum feedback | Once in a year | Faculty, Students, Alumni, Parents and Employer | Offline | To improve TLP and include value-added courses |

Feedback on the teaching-learning process: This feedback is very essential to improve the quality of teaching-learning process and the feedback from the students will be taken twice in a semester, namely formative feedback and summative feedback. The **Formative feedback** is gathered in the middle of every semester, generally in the 8th week of the ongoing semester and the **Summative Feedback** is taken in the 12th week of every ongoing semester. These feedbacks are generally collected online using the institute MIS. The feedback contains 10 questions and the students shall rate on 5 point scale and the students. Once the feedback is collected from the students, the respective Head of the department will share the information with the individual faculty member along with his/her observations. Faculty members with less than 75% feedback will be informed to improve their performance and appreciation to the faculty with 90% above points.

Course end survey: The course end survey is collected from the students to know the attainment of the course outcomes. This survey is collected at the end of the semester through a Google form developed by the respective course coordinator. There are two sections in the course-end survey. The first section includes the course objectives, course content, various activities, and assessment conducted in the class and the second section is about the course outcomes. Both the sections are rated on four point scale. The response of the survey is used for the indirect assessment of the course outcomes.

Student's assessment of faculty, system in place: Online feedback with questions relevant to teaching-learning process is collected twice in a semester. Performance is measured in terms of the percentage of points obtained for each question. Concerned HOD and the individual faculty are made to know the marks scored in the feedback. HOD congratulates the best-performing faculty members and encourages others to perform better

6. Programmes offered:

Name of the Programmes approved by AICTE:

- Master of Business Administration (MBA) in HR, Finance & Marketing
- BE in Artificial Intelligence & Data Science
- BE in Artificial Intelligence & Machine Learning

- BE in Civil Engineering (Progressive closure from 2024)
- BE in Computer Science & Engineering
- BE in Electronics & Communication Engineering
- BE in Mechanical Engineering

Names of the Programmes Accredited by NBA:

- BE in Computer Science & Engineering
- BE in Electronics & Communication Engineering

Status of the Accreditation of the courses:

Total Number of Courses eligible for accreditation: **03**

No. of courses Accredited: **02**

No. of courses for which applied for Accreditation: **01**

Status of Accreditation: Two Engineering programmes Accredited by NBA valid till 30 June 2027
 NBA accreditation certificate link: <https://sode-edu.in/uncategorized/national-board-of-accreditation-nba/>

Admission details:

| Course | Number of seats | Duration | Cut off rank for last three years | | |
|--|-----------------|----------|-----------------------------------|------------------------------|------------------------------|
| | | | 2024 Highest to lowest | 2023 Highest to lowest | 2022 Highest to lowest |
| Master of Business Administration (MBA) | 60 | 2 years | 22828 - 30535 | 43655-43006 | --- |
| BE in Artificial Intelligence & Data Sc. | 60 | 4 Years | 59257-261102 | 47361-80075 | 45488-45634 |
| Artificial Intelligence & Machine Learning | 60 | 4 Years | 63738-93089 | 56179-80115 | 54781-55594 |
| Civil Engineering | 30 | 4 Years | closed | 171534-179534 | 130509-170853 |
| Computer Science & Engineering | 180 | 4 Years | 51794-107441 | 35131-39746 | 29245-29569 |
| Electronics & Communication Engg | 120 | 4 Years | 88103-265294 | 78158-195051 | 74274-78218 |
| Mechanical Engineering | 30 | 4 Years | 167473-251899 | 183196-183196 | 168593-168593 |

7. Faculty

Profile of the Faculty Members

- [Master of Business Administration](https://sode-edu.in/sode-faculty/?dept_id=26876): https://sode-edu.in/sode-faculty/?dept_id=26876
- [Artificial Intelligence & Data Science](https://sode-edu.in/sode-faculty/?dept_id=23988): https://sode-edu.in/sode-faculty/?dept_id=23988
- [Artificial Intelligence & Machine Learning](https://sode-edu.in/sode-faculty/?dept_id=23992): https://sode-edu.in/sode-faculty/?dept_id=23992
- [Civil Engineering](https://sode-edu.in/sode-faculty/?dept_id=177): https://sode-edu.in/sode-faculty/?dept_id=177
- [Computer Science and Engineering](https://sode-edu.in/sode-faculty/?dept_id=41): https://sode-edu.in/sode-faculty/?dept_id=41
- [Electronics and Communication Engineering](https://sode-edu.in/sode-faculty/?dept_id=1058): https://sode-edu.in/sode-faculty/?dept_id=1058
- [Mechanical Engineering](https://sode-edu.in/sode-faculty/?dept_id=47): https://sode-edu.in/sode-faculty/?dept_id=47
- [Chemistry](https://sode-edu.in/sode-faculty/?dept_id=16999): https://sode-edu.in/sode-faculty/?dept_id=16999
- [Physics](https://sode-edu.in/sode-faculty/?dept_id=17004): https://sode-edu.in/sode-faculty/?dept_id=17004
- [Mathematics](https://sode-edu.in/sode-faculty/?dept_id=17002): https://sode-edu.in/sode-faculty/?dept_id=17002

FACULTY LIST

| Civil Engineering | | |
|---|--------------------------------|------------------------------|
| Sl.No | Name of the Faculty | Designation |
| 1 | Dr. Deepika B V | Associate Professor & Head |
| 2 | Mr. Sunil Suresh Haldankar | Assistant Professor (Sr.) |
| 3 | Mr. Madhusoodhana Rao N | Assistant Professor (Sr.) |
| 4 | Mr. Roshan S Kotian | Assistant Professor (Sr.) |
| 5 | Mr. Jayarama Nayak | Assistant Professor(Sr.) |
| Department of Computer Science & Engineering | | |
| 1 | Dr. Ganesh Aithal | Professor & Vice Principal |
| 2 | Dr. Nagaraj Bhat | Professor & Dean (Academics) |
| 3 | Dr. Soumya J Bhat | Associate Professor & Head |
| 4 | Dr. Sadananda L | Associate Professor |
| 5 | Dr. Bharti Panjwani | Associate Professor |
| 6 | Mr. Chandrashekhar Rao Kuthyar | Assistant Professor (SG.) |
| 7 | Dr. Surajit Deb Barma | Assistant Professor (SG.) |
| 8 | Mr. Deepak Rao M | Assistant Professor (Sr.) |
| 9 | Ms. Sahana | Assistant Professor (Sr.) |
| 10 | Ms. Savitha A Shenoy | Assistant Professor (Sr.) |
| 11 | Mr. Raghavendra Ishwar Hegde | Assistant Professor (Sr.) |
| 12 | Ms. Rukmini Bhat | Assistant Professor (Sr.) |
| 13 | Ms. Yashaswini A S | Assistant Professor (Sr.) |
| 14 | Ms. Sowmya | Assistant Professor(Sr.) |
| 15 | Ms. Preethi M | Assistant Professor(Sr.) |
| 16 | Mr. Raghavendra G S | Assistant Professor(Sr.) |
| 17 | Ms. R. Soundharya | Assistant Professor |
| 18 | Ms. Chaithra Bhat M | Assistant Professor |
| 19 | Ms. Reshma | Assistant Professor |
| 20 | Ms. Mahadevi | Assistant Professor |
| 21 | Ms. Babitha Poojary | Assistant Professor |
| 22 | Ms. Pooja V | Assistant Professor |
| 23 | Ms. Ashritha K P | Assistant Professor |
| 24 | Mr. Prasad Pai | Professor of Practice |

| | | |
|---|--------------------------------|------------------------------|
| 25 | Ms. Vijetha | Visiting Professor |
| E&C Engg. | | |
| 1 | Dr. Sachin S Bhat | Professor |
| 2 | Mr. Lawrence D Almada | Professor |
| 3 | Dr. Shilpa Kamath S | Associate Professor |
| 4 | Mr. Shivaraj Hublikar | Associate Professor |
| 5 | Mr. Arun Upadhyaya | Associate Professor/I/C Head |
| 6 | Mr. Chetan R | Assistant Professor (SG) |
| 7 | Ms. Shashikala R. | Assistant Professor (Sr.) |
| 8 | Mr. Ganesh Srinivasa Shetty | Assistant Professor (Sr.) |
| 9 | Ms. Sowmya Bhat | Assistant Professor (Sr.) |
| 10 | Mr. Sachin Prabhu K | Assistant Professor (Sr.) |
| 11 | Ms. Yogeshwary B H | Assistant Professor (Sr.) |
| 12 | Ms. Vijayalatha Devadiga | Assistant Professor (Sr.) |
| 13 | Ms. Akshatha Rao L | Assistant Professor(Sr.) |
| 14 | Ms. Pavithra Poornima | Assistant Professor(Sr.) |
| 15 | Mr. Raghunatha | Assistant Professor(Sr.) |
| 16 | Ms. Vimitha A | Assistant Professor |
| 17 | Ms. Chandana | Assistant Professor |
| 18 | Ms. Jayashree M | Assistant Professor |
| 19 | Ms. Lahari Vaidya | Assistant Professor |
| 20 | Mr. Ajesh | Assistant Professor |
| 21 | Mr. Sandeepa Prabhu | Assistant Professor |
| 22 | Mr. Ganesh U G | Assistant Professor |
| 23 | Ms. Dhanya | Visiting Professor |
| 24 | Mr. Pranav Bhat | Visiting Professor |
| Department of Mechanical Engineering | | |
| 1 | Prof. Dr. Thirumaleshwara Bhat | Professor & Principal |
| 2 | Dr. Sudarshan Rao K | Professor & Dean QA |
| 3 | Dr. Udaya Prasanna H | Professor on contract |
| 4 | Dr. Raja Yateesh Yadav | Associate Professor & Head |
| 5 | Dr. Madhukara Nayak | Assistant Professor (SG) |
| 6 | Dr. Manjunath S | Assistant Professor (SG) |
| 7 | Dr. Bharath K Bhat | Assistant Professor (SG) |
| 8 | Mr. Adithya Kudva S | Assistant Professor (SG) |

| | | |
|----------------------------------|----------------------------|----------------------------|
| 9 | Mr. Sudhir | Assistant Professor (SG) |
| 10 | Mr. Mallya Ananth Mohan | Assistant Professor (SG) |
| 11 | Mr. Ravinarayan Rao | Assistant Professor (Sr.) |
| 12 | Mr. Karthik V | Assistant Professor (Sr.) |
| 13 | Mr. Hithesh Mendon | Assistant Professor |
| Department of Chemistry | | |
| 1 | Dr. Subbulakshmi N.Karanth | Associate Professor & Head |
| 2 | Dr. C K Manjunath | Associate Professor |
| 3 | Dr. Ravi Prabha K. | Assistant Professor (SG.) |
| 4 | Ms. Swathi | Assistant Professor |
| Department of Mathematics | | |
| 1 | Dr. Lolita Priya Castelino | Associate Professor & Head |
| 2 | Dr. Renita Sharon Monis | Assistant Professor (SG.) |
| 3 | Ms. Bhagyalakshmi Navada | Assistant Professor (Sr.) |
| 4 | Ms. Nisha Reena Nazareth | Assistant Professor(Sr.) |
| 5 | Ms. Kavyalaxmi | Assistant Professor(Sr.) |
| 6 | Ms. Reshma Nayak | Assistant Professor |
| 7 | Ms. Sthuthi | Assistant Professor |
| Department of Physics | | |
| 1 | Dr. Ravindra H J | Professor & Head |
| 2 | Dr. Sandhya | Assistant Professor (Sr.) |
| 3 | Ms. UshaParvathi | Assistant Professor(Sr.) |
| 4 | Ms. Rekha | Assistant Professor |
| Department of AI-DS | | |
| 1 | Mr. Nagaraja Rao | Associate Professor & Head |
| 2 | Dr. Ranjan Kumar H S | Associate Professor |
| 3 | Mr. Rajesh Nayak | Associate Professor |
| 4 | Mr. Hariharan R L | Associate Professor |
| 5 | Ms. Vandana U | Assistant Professor |
| 6 | Mr. Balachandra R Jogi | Assistant Professor |
| 7 | Mr. Sarvesh S Rao | Assistant Professor |
| 8 | Ms. Shabana S | Assistant Professor |
| Department of AI-ML | | |
| 1 | Dr. Mamatha I | Associate Professor & Head |
| 2 | Dr. Rashmi Samanth | Assistant Professor (SG.) |

| | | |
|--------------------------|---------------------------|--------------------------|
| 3 | Dr. Vighnesh Shenoy | Assistant Professor(SG.) |
| 4 | Dr. Ganesha Prasad | Assistant Professor(SG.) |
| 5 | Dr. Shrivathsa T V | Assistant Professor(SG.) |
| 6 | Ms. Megha Rani | Assistant Professor(Sr.) |
| 7 | Ms. Ashwini K | Assistant Professor |
| 8 | Ms. Mamatha | Assistant Professor |
| Department of MBA | | |
| 1 | Dr. Suraj Francis Norohna | Professor & Director |
| 2 | Dr. K Abhaya Kumar | Associate Professor |
| 3 | Mr. Varun K | Assistant Professor(Sr) |
| 4 | Mr. Steevan Robert Tellis | Assistant Professor(Sr) |
| 5 | Ms. Aurin Madtha | Assistant Professor |
| 6* | Dr. Komal Jenifer Dsouza | Visiting Professor |
| 7* | Dr. Neha Lakhotia Sarda | Visiting Professor |

*Faculty member on alternative semester

STUDENT-FACULTY RATIO (SFR) FOR THE YEAR 2024-25

| PROGRAM | SANCTIONED STRENGTH | TOTAL NUMBER OF FACULTY | SFR |
|---------|---------------------|-------------------------|--------|
| UG | 1890 | 98 | 1:19.3 |
| PG | 120 | 6 | 1:20 |

Profile of the Principal



| | |
|----------------------------------|---|
| Name | Dr. Thirumaleshwara Bhat |
| Date of Birth | 04/11/1965 |
| Unique ID | 1-2914507333 |
| Educational Qualification | B.E, M Tech., Ph D., |
| Work Experience | |
| Teaching | 33 years |
| Research | 16 years (including teaching) |
| Area of Specialization | Tribology of Composite Materials |
| Courses taught at Under Graduate | Machine Design, Operations Research, Mechanics of Machines |
| Research Guidance | |
| No. of research scholars | |
| • Master (Completed) | 3 |
| • Ph. D (Completed / ongoing) | 8 |
| No. of papers published | National journals: 02 International Journals: 20 National Conference: 14 International Conference: 6 |
| Research publications | 42 |

8. Fee Structure

| | | |
|-----------------------------|--|--|
| Total College Fee | Admission through KEA (Govt seats) | Rs. 115206 (All branches) |
| | Management quota seats | CE and ME- 90610 ECE – 1,50,610 AI & DS and AI & ML– 2,30,610 CSE- Rs. 2,60,610 |
| | COMEDK seats | Rs. 2,16,721 (All branches) |
| Schedule for payment of fee | Soon after the allotment of the seat for First-year students and Before reopening of Odd sem. from II year onwards | |

*fee includes the University Registration Fee

No. of Fee waivers granted with amount and name of students admitted under AICTE supernumerary quota during 2024-25

| Sl. No | Name of the student | CET rank | Branch | Fee |
|--------|---------------------|----------|--------|-----------|
| 1 | SAKSHI | 32131 | AI&DS | 31,360.00 |
| 2 | VAISHNAVI K AMIN | 22561 | AI&DS | 31,360.00 |
| 3 | ZEHA AYESHA | 31536 | AI&DS | 31,360.00 |
| 4 | APEKSHA | 24654 | AI&ML | 31,360.00 |

| | | | | |
|----|---------------------------|--------|-------|-----------|
| 5 | KEERTHAN KRISHNA SHERIGAR | 15187 | AI&ML | 31,360.00 |
| 6 | Kundar kashish chandra | 52042 | AI&ML | 31,360.00 |
| 7 | NISHA | 30471 | CSE | 31,360.00 |
| 8 | PRATHIKSHA P SHETTY | 34511 | CSE | 31,360.00 |
| 9 | RAMYA | 13391 | CSE | 31,360.00 |
| 10 | SAFA | 31768 | CSE | 31,360.00 |
| 11 | SATHWIK G KAMATH | 23454 | CSE | 31,360.00 |
| 12 | SHARANYA THANTRY | 13139 | CSE | 31,360.00 |
| 13 | SINDHU | 33787 | CSE | 31,360.00 |
| 14 | SWASTHIK ACHARYA | 17299 | CSE | 31,360.00 |
| 15 | UTHSAV N SHETTY | 36644 | CSE | 31,360.00 |
| 16 | ANANYA M MENDON | 54701 | ECE | 31,360.00 |
| 17 | B AKHILESH SHETTY | 62346 | ECE | 31,360.00 |
| 18 | CHAITHRA PAI | 62217 | ECE | 31,360.00 |
| 19 | PAVAN PRABHU | 67629 | ECE | 31,360.00 |
| 20 | PREETHA J ACHARYA | 17146 | ECE | 31,360.00 |
| 21 | VINUTHA | 69641 | ECE | 31,360.00 |
| 22 | ADISHA NAIK | 110266 | Mech | 31,360.00 |

The number of scholarships offered by the institution and its supporters, duration, and amount (2023-24) are as follows:

| Sl. No | SCHOLARSHIP SPONSORS | NO. OF STUDENTS | SANCTIONED AMOUNT |
|--------|--|-----------------|-------------------|
| 1 | Scholarship from Sode Vadiraja Mutt Education Trust | 62 | 1153443 |
| 2 | Proficiency Prizes From The Institute | 15 | 15000 |
| 3 | Gowthama Foundation | 9 | 54000 |
| 4 | Madhwa Vadiraja Prashasthi -Best Outgoing (Boy) Award | 1 | 10000 |
| 5 | Madhwa Vadiraja Prashasthi -Best Outgoing (Girl) Award | 1 | 10000 |
| 6 | Vidya Poshak Scholarship (Yakshagaana Kalaranga) | 25 | 485000 |
| 7 | Sitaram Jindal Foundation | 47 | 674100 |
| 8 | Ramakrishna Mission Ashrama | 4 | 24000 |
| 9 | Smt Tonse Padmavathiamma & Sri Subanna P Udupi Memorial Trust | 16 | 160000 |
| 10 | Hayavadana Prashasthi 2023-24 Instituted by Dr. Madhusudhan Atre Bangalore | 1 | 10000 |
| 11 | Hayavadana Prashasthi 2023-24 Instituted by Mr. Chinnayya Accenture in Australia | 1 | 10000 |
| 12 | Reliance Foundation Undergraduate Scholarships | 2 | 100000 |
| 13 | India Bulls Foundation | 1 | 90000 |
| 14 | JSW Foundation | 10 | 500000 |

| | | | |
|--------------------------|--|------------|----------------|
| 15 | U GO SCHOLARSHIP | 1 | 50000 |
| 16 | PHANEESH KUMAR | 1 | 25000 |
| 17 | IEEE SCHOLARSHIP | 5 | 25000 |
| 18 | SANTHOOR SCHOLARSHIP | 1 | 30000 |
| 19 | SALIGRAMA GURU NARASIMHA TREMPLE SCHOLARSHIP | 23 | 2398095 |
| 20 | NACH SCHOLRAHIP TO NEHA 4MW23AD023, 4MW23CS046 | 2 | 145810 |
| 21 | SOUTH KANARA DRAVIDA BRAHMIN ASSOCIATION | 1 | 25000 |
| 22 | BUDDY4STUDY SCHOLARSHIP FOR RURAL STUDENTS - SINCHANA SHERIGAR 22CS153 | 1 | 45000 |
| 23 | AMMEMBAL SUBBA RAO PAI MEMORIAL FUND SCHOLARSHIP | 1 | 25000 |
| Total Scholarship | | 231 | 6064448 |

9. Admission

No. of Seats sanctioned with the year of approval: <https://sode-edu.in/aicte-approval-letters/>

Number of students admitted under various categories in last three years

| Year | Sanctioned Intake* | Government seats** | Management Admissions | Total |
|---------|--------------------|--------------------|-----------------------|-------|
| 2024-25 | 450 | 203 | 225 | 428 |
| 2023-24 | 480 | 208 | 238 | 446 |
| 2022-23 | 480 | 204 | 232 | 436 |

*excluding 5% seats of SNQ **including 5% SNQ

Number of applications received during last three years for admission under Management quota and number of students admitted

| Year | Applications received | No. of students admitted |
|---------|-----------------------|--------------------------|
| 2024-25 | 382 | 225 |
| 2023-24 | 332 | 238 |
| 2022-23 | 285 | 232 |

10. Admission Procedure

Following are the guidelines for the candidates seeking admission at SMVITM. Admission to First Year Program: Admission is granted in accordance with the rules and regulations enforced by the All India Council for Technical Education (AICTE), New Delhi and Govt. of Karnataka (GOK) from time to time.

The eligibility to get admission to engineering programs:

The candidate should have passed in 2nd PUC / 12th Std. with English as one of the languages and obtained a minimum of 45% marks in aggregate in Physics and Mathematics along with Chemistry / Biotechnology / Biology / Electronics / Computer as the third subject. For SC, ST, Cat-1, 2A, 2B, 3A & 3B category candidates of Karnataka, the minimum percentage of marks to get the engineering admission is 40%.

Aspiring students shall take up the Common Entrance Test (CET) conducted by the Karnataka Examinations Authority (KEA) and get admitted through the KEA counseling process. The details about the Common Entrance Test and KEA counseling process will be notified by the GOK in all leading newspapers. A few management seats are also available in the institution. The students seeking management seats shall meet the college authorities.

Lateral Admission to Second Year Program for Diploma/B.Sc. candidates:

The students who wish to join the second-year program through lateral entry shall follow the KEA norms for

lateral admissions. The Successful Diploma / B. Sc students are eligible to get admitted to the second year of Engineering through Lateral Admission. Such candidates should have passed a three-year diploma course from an AICTE-approved institution with a minimum of 45% marks in aggregate in the appropriate branch of Engineering / Technology (40% marks for SC, ST, Cat-1, 2A, 2B, 3A & 3B category candidates).

OR

Passed B. Sc Degree from a UGC recognized University with a minimum of 45% marks in aggregate (40% marks for SC, ST, Cat-1, 2A, 2B, 3A & 3B category candidates of Karnataka) and passed 12th Std. with Mathematics as one of the subjects.

Criteria and weightage for admission

Submission of Application form:

Candidates who wish to join the Institute can visit the institution and submit the application form. The application form costs Rs. 2000/- . The application form can also be obtained through post by paying an amount of Rs 2100.00 (Rs 2000 + Rs 100 towards postal expenses) by a DD (in favor of "Shri Madhwa Vadiraja Institute of Technology & Management" Payable at Udupi.) or through NEFT and provide us the Address and Mobile Number through an email to info@sode-edu.in.

Bank details for making payment

Bank Name: HDFC Bank

Branch: Shirva

A/c Type: CURRENT

A/c Name: SHRI MADHWA VADIRAJA INSTITUTE OF TECHNOLOGY & MANAGEMENT

A/c number: 50100303818541

IFSC: HDFC0009540

Government seat allocation:

Students seeking Government seats shall attend the Common Entrance Test conducted by the Karnataka Examination Authority. For more details about the admission, the candidate is advised to visit the website www.kea.kar.nic.in

COMEDK seat allocation:

The institute offers 30% of the UG program seats in each program through COMEDK. The student seeking a COMEDK seat shall attend the Common Entrance Test conducted by the COMEDK. For more details about the admission, the candidate is advised to visit the website www.comedk.org

Management seat allocation:

The institute admits 25% of the UG seats in each program through management quota based on the merit list prepared after the institute level entrance test.

- Date of inviting application form : 23 April 2024
- Last date for the submission of application form : 10 May 2024
- Entrance test date (offline) : 14 May 2024
- Announcement of merit list (institute website) : 16 May 2024
- Last date for admission : 31 October 2024
- Last date for closing the admission : 31 October 2024

11. List of applicants (2024-25):

| Sl. No | Name of the candidate | Program | % marks in qualifying exam |
|--------|------------------------|---------|----------------------------|
| 1 | Adithya S Poojary | AI/DS | 69% |
| 2 | AISHA | AI/DS | 70.66% |
| 3 | Ananya Nayak | AI/DS | 74.50% |
| 4 | Ananya Raikar | AI/DS | 76.66% |
| 5 | Ankitha Prasanna Nayak | AI/DS | 75.30% |

| | | | |
|----|-------------------------|-------|--------|
| 6 | Aren Vowin Dsouza | AI/DS | 66.70% |
| 7 | Arpitha Tantry | AI/DS | 85.66% |
| 8 | Arwin Jackson Maben | AI/DS | 72% |
| 9 | Ayesha | AI/DS | 74.33% |
| 10 | B. G Prarthana Hebbar | AI/DS | 70.33% |
| 11 | Bharathraj A Nayak | AI/DS | 89% |
| 12 | Boomika | AI/DS | 82.83% |
| 13 | Danush | AI/DS | 70% |
| 14 | Dishan | AI/DS | 76% |
| 15 | Harshitha | AI/DS | 77.66% |
| 16 | Kundar Kashish | AI/DS | 87.60% |
| 17 | Mainuddin | AI/DS | 68% |
| 18 | Manish Thingalaya | AI/DS | 69.33% |
| 19 | Mohammed Afreed | AI/DS | 68.66% |
| 20 | Mohammed Awad Tonse | AI/DS | 64.67 |
| 21 | Mohammed Rafique | AI/DS | 78.66% |
| 22 | Mohammed Suhan | AI/DS | 65.60% |
| 23 | Monisha Devadiga | AI/DS | 61% |
| 24 | N Karthik | AI/DS | 80.10% |
| 25 | Nireeksha | AI/DS | 80% |
| 26 | Nisha | AI/DS | 81% |
| 27 | Nishan D Shetty | AI/DS | 77% |
| 28 | Nishanth Shetty | AI/DS | 65.33% |
| 29 | Padmashree | AI/DS | 85% |
| 30 | Panchami | AI/DS | 89.66 |
| 31 | Pavan Bhat | AI/DS | 80% |
| 32 | Pavan S Poojary | AI/DS | 53.67% |
| 33 | Poojari Sannidhi Suresh | AI/DS | 78.60% |
| 34 | Prabhanjan | AI/DS | 68% |
| 35 | Prajwal | AI/DS | 61% |
| 36 | Prajwal | AI/DS | 60.33% |
| 37 | prateeksha | AI/DS | 69% |
| 38 | Pratheeksha Nayak | AI/DS | 89.33% |
| 39 | Prathik | AI/DS | 85% |
| 40 | Preeth shetty | AI/DS | 64.66% |
| 41 | Rajath | AI/DS | 74% |
| 42 | Rakshana | AI/DS | 76% |
| 43 | Rakshitha | AI/DS | 87.67% |
| 44 | Reshma | AI/DS | 82.66% |
| 45 | Rishan Francis Menezes | AI/DS | 69% |
| 46 | Rithesh R | AI/DS | 65% |
| 47 | Ruthika | AI/DS | 69% |
| 48 | Sanjan Shetty | AI/DS | 69% |
| 49 | Sanvi Shettigar | AI/DS | 83.33% |
| 50 | Shamili | AI/DS | 88% |
| 51 | Shetty Raksha Uday | AI/DS | 91.66% |
| 52 | Shravan | AI/DS | 80.66% |
| 53 | Shreya Ravikumar | AI/DS | 68.66% |
| 54 | Shri Raksha Bhat | AI/DS | 80.33% |
| 55 | Suchainya | AI/DS | 68.33 |
| 56 | Sudeep S Prabhu | AI/DS | 48% |
| 57 | Suhaim Shabbir | AI/DS | 72% |
| 58 | Suhanya | AI/DS | 70.33% |

| | | | |
|-----|-----------------------------------|-------|--------|
| 59 | Sunil | AI/DS | 65% |
| 60 | Swarnashree | AI/DS | 78.66% |
| 61 | Trisha | AI/DS | 74.33% |
| 62 | Vandana V devadiga | AI/DS | 70% |
| 63 | Vighnesh | AI/DS | 73.00% |
| 64 | Vignesh | AI/DS | 77% |
| 65 | Zeenath Ziyen (34,390 extra paid) | AI/DS | 62% |
| 66 | zeenathziyan | AI/DS | 62% |
| 67 | Abhijith | AI/ML | 77% |
| 68 | Advith Gouda | AI/ML | 53.66% |
| 69 | Anvith S Sherigar | AI/ML | 71.33% |
| 70 | Aviratha R Prabhu | AI/ML | 60% |
| 71 | Dhanraj L Poojary | AI/ML | 70.60% |
| 72 | Dhanya | AI/ML | 73.60% |
| 73 | H Adithyasuma Shetty | AI/ML | 50% |
| 74 | Harshith | AI/ML | 57.30% |
| 75 | Kishan J | AI/ML | 66.33% |
| 76 | Maneesh Shetty | AI/ML | 80.66% |
| 77 | Manmitha | AI/ML | 61.66% |
| 78 | Mayur | AI/ML | 73.66% |
| 79 | Mohammed Simak | AI/ML | 78% |
| 80 | Mohammed Asad | AI/ML | 58% |
| 81 | Mourya Raj H N | AI/ML | 73.66% |
| 82 | Navya | AI/ML | 69.33% |
| 83 | Pavan Nayak | AI/ML | 80% |
| 84 | Pavithra Nayak | AI/ML | 76.67% |
| 85 | Praneeth Kumar | AI/ML | 63.66% |
| 86 | Rajath H S | AI/ML | 62.33% |
| 87 | Rakesh Hegde | AI/ML | 59.60% |
| 88 | Rithin | AI/ML | 65.66% |
| 89 | Sachin | AI/ML | 58.66% |
| 90 | Samarth R Shetty | AI/ML | 50.60% |
| 91 | Sanika | AI/ML | 52% |
| 92 | Sathwik | AI/ML | 58.66% |
| 93 | Shamitha Hebbar | AI/ML | 60% |
| 94 | Sharath | AI/ML | 60.32% |
| 95 | Shetty Rashik Rathnakar | AI/ML | 62.66% |
| 96 | Shranya | AI/ML | 58.66% |
| 97 | Shravya | AI/ML | 57.60% |
| 98 | Shreesh A Devadiga | AI/ML | 59.75% |
| 99 | Shrisha | AI/ML | 56.33% |
| 100 | Shriya Devadiga | AI/ML | 94% |
| 101 | Sinchana | AI/ML | 68% |
| 102 | Spoorthi | AI/ML | 79.67% |
| 103 | Sudarshan | AI/ML | 60% |
| 104 | Sujeet Ganesh Shet | AI/ML | 59.33% |
| 105 | Supraja S M | AI/ML | 80.66 |
| 106 | Tejas | AI/ML | 65.66% |
| 107 | Vamsh | AI/ML | 55.33% |
| 108 | Vandana | AI/ML | 89.67 |
| 109 | Vignesh Adiga | AI/ML | 74% |
| 110 | Vihaan S | AI/ML | 64.33% |

| | | | |
|-----|--------------------------|-----|---------|
| 111 | Dhikshith Aithal KG | CSE | 76% |
| 112 | Maanya S Acharya | CSE | 84% |
| 113 | Preetha J Acharya | CSE | 94.66% |
| 114 | Shreya Shetty | CSE | 92.30% |
| 115 | Aarya | CSE | 92% |
| 116 | Abdul nasir | CSE | 55% |
| 117 | Abhishek | CSE | 67.33% |
| 118 | Adithi S Nayak | CSE | 89% |
| 119 | Adithya V Acharya | CSE | 84.33 % |
| 120 | Akankaha G Shetty | CSE | 76% |
| 121 | Akash Narasimha Nayak | CSE | 84.30% |
| 122 | Ananaya Y Bangera | CSE | 79.66% |
| 123 | Ananya | CSE | 76% |
| 124 | Ananya | CSE | 86.00% |
| 125 | Ananya | CSE | 72.66% |
| 126 | Ananya Nayak | CSE | 74.66 |
| 127 | Ananya Y Bangera | CSE | 79.66% |
| 128 | Ankith | CSE | 84.33% |
| 129 | Anvesh N Acharya | CSE | 72.66% |
| 130 | Aron Owen D'Souza | CSE | 64% |
| 131 | Arya Asween Desai | CSE | 93% |
| 132 | Aryan G | CSE | 88% |
| 133 | Ashmi Shetty | CSE | 72% |
| 134 | Ashraya Shetty | CSE | 88% |
| 135 | Ayishathul Mufida | CSE | 75.66 |
| 136 | B . Ranjan Pai | CSE | 91.60% |
| 137 | Chandana | CSE | 87.33% |
| 138 | Chandrakala | CSE | 55.33% |
| 139 | Cleonie | CSE | 60% |
| 140 | Darren Dsouza | CSE | 82.66 |
| 141 | Deekshith | CSE | 76% |
| 142 | Deekshith | CSE | 64% |
| 143 | Devadiga Suhas Suresh | CSE | 54.66 |
| 144 | Dhaatri N Bhat | CSE | 56% |
| 145 | Dhiraj | CSE | 83% |
| 146 | Dhrethi | CSE | 85.33% |
| 147 | Disha | CSE | 51.33% |
| 148 | Disha | CSE | 76.33% |
| 149 | Disha D Poojary | CSE | 98.33% |
| 150 | Disha S Poojary | CSE | 83.33% |
| 151 | Divya | CSE | 91% |
| 152 | Drushya K Shetty | CSE | 58% |
| 153 | Esha S M | CSE | 81.30% |
| 154 | Ganapathi Mallya | CSE | 82% |
| 155 | Gautham G Prabhu | CSE | 53% |
| 156 | Gowrish M Sheregar | CSE | 74.66 |
| 157 | Gracelda Sweedal Serrao | CSE | 69.66% |
| 158 | Harsha S Rao | CSE | 82% |
| 159 | Harshitha Shettigar | CSE | 93% |
| 160 | Himani | CSE | 64.67% |
| 161 | Inchara | CSE | 81% |
| 162 | Jeethan Welroy Fernandes | CSE | 88.66% |
| 163 | Karthik B Nayak | CSE | 56.66% |

| | | | |
|-----|----------------------------------|-----|--------|
| 164 | Karthik Sherigar | CSE | 71% |
| 165 | Kaushik | CSE | 81% |
| 166 | Keerthana | CSE | 94.33% |
| 167 | Keerthi.R.Shetty | CSE | 77% |
| 168 | Khushi | CSE | 82% |
| 169 | Koushtubha | CSE | 81.66% |
| 170 | Krithi | CSE | 86.66% |
| 171 | krithika | CSE | 65% |
| 172 | Kushi | CSE | 87.83% |
| 173 | Lavanya Shankar Moger | CSE | 79.66% |
| 174 | Laxmeesh V | CSE | 85.33% |
| 175 | Likhita | CSE | 83% |
| 176 | Lipika Nayak | CSE | 87.60% |
| 177 | Maanya | CSE | 89% |
| 178 | Maanya B C | CSE | 87% |
| 179 | Madhura | CSE | 87% |
| 180 | Manasa R kulal | CSE | 76% |
| 181 | Manasa R Kulal | CSE | 76.66% |
| 182 | Manjushree | CSE | 88.33% |
| 183 | Manoj Kumar | CSE | 87% |
| 184 | Manu | CSE | 73.66% |
| 185 | Mauresh M Naik | CSE | 67% |
| 186 | Meghana | CSE | 77.33% |
| 187 | Mohammed Suhaym | CSE | 56.66% |
| 188 | Moksha Jeetendra Murudeshwara | CSE | 73.67% |
| 189 | Naman | CSE | 55% |
| 190 | Navya | CSE | 72.33 |
| 191 | Neha | CSE | 69.66% |
| 192 | Nikhil Naik | CSE | 54.33% |
| 193 | Niranjan | CSE | 68.66% |
| 194 | Nirmitha K Nagaraj | CSE | 91% |
| 195 | Nisha M B | CSE | 81% |
| 196 | Nishmitha | CSE | 87.33 |
| 197 | Panchami V Devadiga | CSE | 89.66% |
| 198 | Pavan | CSE | 89.50% |
| 199 | Poojashree | CSE | 65.66% |
| 200 | Poorvi Sunil Dev | CSE | 74% |
| 201 | Poorvika | CSE | 87% |
| 202 | Prajna | CSE | 90% |
| 203 | Prajwal | CSE | 73% |
| 204 | Prajwal | CSE | 81% |
| 205 | Prakrathi | CSE | 79% |
| 206 | Pranav P K | CSE | 97% |
| 207 | Prateeksha | CSE | 92% |
| 208 | Pratham G Kumar | CSE | 84 |
| 209 | Prathvi Devadiga | CSE | 86% |
| 210 | Prathweesh | CSE | 67.66% |
| 211 | Preethish D Souza | CSE | 83.67% |
| 212 | Puneeth | CSE | 87% |
| 213 | Rafiya Fathima | CSE | 80% |
| 214 | Ramith | CSE | 80.33% |
| 215 | Ramyra Prabhu | CSE | 84% |

| | | | |
|-----|-----------------------|-----|--------|
| 216 | Rashi shetty | CSE | 62% |
| 217 | Rijesh S | CSE | 52.66% |
| 218 | Roshan | CSE | 90% |
| 219 | Rupak | CSE | 79.33 |
| 220 | Sagar H Poojary | CSE | 64.66% |
| 221 | Sahana | CSE | 79.60% |
| 222 | Sakshi | CSE | 75% |
| 223 | Sameeksha Bekal | CSE | 77.50% |
| 224 | Sameer Acharya | CSE | 88.67% |
| 225 | Samiksha | CSE | 75.67% |
| 226 | Samruddi | CSE | 84.33% |
| 227 | Samruth Jonath | CSE | 92.3 |
| 228 | Sanchitha | CSE | 91.33 |
| 229 | Sanya | CSE | 80.66% |
| 230 | Sargam | CSE | 74.33% |
| 231 | Sarthak | CSE | 90% |
| 232 | Shakshi | CSE | 79% |
| 233 | Shamanth K | CSE | 92.33 |
| 234 | Sharadhi G Poojary | CSE | 86.33% |
| 235 | Sharan | CSE | 61% |
| 236 | Sharath | CSE | 55% |
| 237 | Shashank Kamath | CSE | 87.66% |
| 238 | Sheik Mohammed | CSE | 82.33% |
| 239 | Shiva Prasad | CSE | 87% |
| 240 | Shradda Nayak | CSE | 92% |
| 241 | Shraddha | CSE | 85% |
| 242 | Shravan | CSE | 79.67% |
| 243 | Shravya | CSE | 57.66% |
| 244 | Shraya | CSE | 85% |
| 245 | Shree Rakshitha Rao | CSE | 63% |
| 246 | Shreedhanya G Maddodi | CSE | 79.33% |
| 247 | Shreehari Shenoy R | CSE | 51.66% |
| 248 | Shreelakshmi | CSE | 92% |
| 249 | Shreepriya P Acharay | CSE | 52.66 |
| 250 | Shreeshesha G A | CSE | 56% |
| 251 | Shreya Prabhu | CSE | 69 % |
| 252 | Shreyas B Palan | CSE | 70.33% |
| 253 | Shreyas Satish Bhat | CSE | 83.60% |
| 254 | Shrikari R bhat | CSE | 79.67% |
| 255 | Shrinidhi | CSE | 81.66% |
| 256 | Shristi Nayak | CSE | 93% |
| 257 | Shruthika | CSE | 69% |
| 258 | Sinchana J | CSE | 73.30% |
| 259 | Soujanya | CSE | 94.66 |
| 260 | Spoorthi | CSE | 79.66% |
| 261 | Suhas | CSE | 58% |
| 262 | Sujith | CSE | 74.33% |
| 263 | Sunil Bhat | CSE | 64.67 |
| 264 | Suraj R | CSE | 60.33% |
| 265 | Sushanth | CSE | 92% |
| 266 | Sushanth | CSE | 78.66% |
| 267 | Tasmiya | CSE | 85% |
| 268 | Thanmayee | CSE | 77.60% |

| | | | |
|-----|-----------------------------|-----|---------|
| 269 | Thejas B K | CSE | 78% |
| 270 | Thrishna D Poojary | CSE | 89.66% |
| 271 | Trishna | CSE | 91% |
| 272 | Vandana | CSE | 89% |
| 273 | Vidyashree | CSE | 83% |
| 274 | Vikash | CSE | 88% |
| 275 | Vinitha | CSE | 72% |
| 276 | Vishnu Prasad | CSE | 60% |
| 277 | Yash | CSE | 68.33% |
| 278 | Yashasvi | CSE | 94% |
| 279 | Yashaswini | CSE | 79.60% |
| 280 | Zainaba | CSE | 81% |
| 281 | K Raksha Nayak | ECE | 79.33% |
| 282 | Vishnu Naik | ECE | 85% |
| 283 | Abhinandan A Walvekar | ECE | 84.66% |
| 284 | Adithi S Salian | ECE | 59.33% |
| 285 | Adithya V Acharya | ECE | 85% |
| 286 | Akash K Patkar | ECE | 60.33% |
| 287 | Akshay | ECE | 77.67% |
| 288 | Arlene Fernandes | ECE | 94.33 % |
| 289 | Ashrith | ECE | 74.33% |
| 290 | Bharath | ECE | 73.66% |
| 291 | Bhavya S M | ECE | 68% |
| 292 | Chandra Kanth | ECE | 86% |
| 293 | Chandrika | ECE | 86.33 |
| 294 | Chetan Nayak | ECE | 68% |
| 295 | Chetan Suresh karkera | ECE | 93.83% |
| 296 | Deeksha | ECE | 82.66% |
| 297 | Denial | ECE | 83.33% |
| 298 | Dishan | ECE | 71.33% |
| 299 | Fiza | ECE | 81.33 |
| 300 | Gagan | ECE | 73.33% |
| 301 | Ganesh Nayak | ECE | 76% |
| 302 | Gowrav | ECE | 82% |
| 303 | Gururaj Poojary | ECE | 68% |
| 304 | Gururaja A Poojary | ECE | 75% |
| 305 | Karthik A Acharya | ECE | 73% |
| 306 | Krrish B Poojari | ECE | 58.66% |
| 307 | Likhitha Nayak | ECE | 76% |
| 308 | Manjushree | ECE | 88.33% |
| 309 | Manohar | ECE | 68 |
| 310 | Manohar M | ECE | 84.66% |
| 311 | Manu D Acharya | ECE | 73.66% |
| 312 | Mast Shetty Tanmay Bhujanga | ECE | 76% |
| 313 | Megha Raju Billava | ECE | 92% |
| 314 | Mohammed Ifaz | ECE | 65% |
| 315 | Muhammad Shanawaz | ECE | 63% |
| 316 | Naveen S Devadiga | ECE | 69.33% |
| 317 | Nidhi Naveen Shetty | ECE | 55.33% |
| 318 | Niranjan Holla | ECE | 68.66% |
| 319 | Pavithra Nayak | ECE | 79.33 |
| 320 | Poojary Gaurav Srinivas | EcE | 71.66% |
| 321 | Pradeep Salonkar | ECE | 83.66% |

| | | | |
|-----|------------------------------|------|--------|
| 322 | Prajna V Poojary | ECE | 68.66% |
| 323 | Prateek | ECE | 68.66 |
| 324 | Pratham kundar | ECE | 58.33% |
| 325 | Preeth shetty | ECE | 73.50% |
| 326 | Prerana M Jogi | ECE | 59.33% |
| 327 | Puneeth | ECE | 80% |
| 328 | Rajani Tantry | ECE | 79.33% |
| 329 | Rakshitha R Nayak | ECE | 83.33 |
| 330 | Rithesh Surendra Salian | ECE | 56.67% |
| 331 | Rupak K Devadiga | ECE | 79.3 |
| 332 | Saanidhya | ECE | 92.60% |
| 333 | Sachin | ECE | 58.67% |
| 334 | Sachin | ECE | 68.67% |
| 335 | Sakshi S Shetty | ECE | 78.30% |
| 336 | Samaksh S Shetty | ECE | 49.33% |
| 337 | Sameeksha | ECE | 74.33% |
| 338 | Sameeksha | ECE | 72.33% |
| 339 | Sanya | ECE | 55.66 |
| 340 | Shamanth | ECE | 79.60% |
| 341 | Shravan Krishna | ECE | 71% |
| 342 | Shreya U Shettigar | ECE | 85.67 |
| 343 | Shreyas U Shettigar | ECE | 86% |
| 344 | Shrikavya | ECE | 77% |
| 345 | Shushanth | ECE | 86.33 |
| 346 | Sinchana B | ECE | 62.67% |
| 347 | Sinchara | ECE | 79.33% |
| 348 | Sriprerana P Acharya | ECE | 59.67% |
| 349 | Srivathsa S | ECE | 63% |
| 350 | Sujay L Bhat | ECE | 67% |
| 351 | Suman K Naik | ECE | 71.33% |
| 352 | Swarnashree | ECE | 78.66% |
| 353 | Vachan C Achari | ECE | 85% |
| 354 | Vasantha Poojary | ECE | 64.33% |
| 355 | Vighnesh | ECE | 77% |
| 356 | Adarsh | Mech | 66% |
| 357 | Adharsh | Mech | 62% |
| 358 | Akshay Moolya | Mech | 65% |
| 359 | Akshay Moolya | Mech | 61.66% |
| 360 | Apeksha | Mech | 95.30% |
| 361 | Arun Basavaras Vittappanavar | Mech | 68% |
| 362 | Aryan | Mech | 84% |
| 363 | Ashrith | Mech | 77.33% |
| 364 | Athul | Mech | 74% |
| 365 | Ganga | Mech | 76% |
| 366 | Gouthami | Mech | 94% |
| 367 | Karthik K | Mech | 73.67% |
| 368 | Keerthan | Mech | 95.33% |
| 369 | Manvith V Shetty | Mech | 50% |
| 370 | Rajath | Mech | 95.33% |
| 371 | Rakshith | Mech | 68.33% |
| 372 | Raviteja R Kulal | Mech | 69.66% |
| 373 | Sakshi | Mech | 94% |
| 374 | Samith | Mech | 62.67% |

| | | | |
|-----|-------------------|------|--------|
| 375 | Sanith Kumar | Mech | 52.33% |
| 376 | Sanuya Alkin Riza | Mech | 94.66% |
| 377 | Sharan Acharya | Mech | 61.67% |
| 378 | Suhan | Mech | 94.60% |
| 379 | Sujith Salian | Mech | 59% |
| 380 | Sukesh U Ganiga | Mech | 73.33% |
| 381 | Sushan | Mech | 95.30% |
| 382 | Vignesh | Mech | 78.33 |

12. Results of Admission under Management Seats/Vacant Seats

The management seat allotment details

| Sl. No | Name of the candidate | Program | % marks in qualifying exam | Merit (Rank) |
|--------|-------------------------------|---------|----------------------------|--------------|
| 1 | Abhishek | CSE | 69% | 233 |
| 2 | Ananya | CSE | 70.66% | 183 |
| 3 | Ananya Nayak | CSE | 74.50% | 161 |
| 4 | Anvesh N Acharya | CSE | 76.66% | 184 |
| 5 | Aron Owen D'Souza | CSE | 75.30% | 252 |
| 6 | Chandrakala | CSE | 66.70% | 300 |
| 7 | Cleonie | CSE | 85.66% | 275 |
| 8 | Deekshith | CSE | 72% | 253 |
| 9 | Devadiga Suhas Suresh | CSE | 74.33% | 301 |
| 10 | Dhikshith Aithal KG | CSE | 70.33% | 153 |
| 11 | Disha | CSE | 89% | 48 |
| 12 | Disha | CSE | 82.83% | 154 |
| 13 | Drushya K Shetty | CSE | 70% | 288 |
| 14 | Gautham G Prabhu | CSE | 76% | 308 |
| 15 | Gowrish M Sheregar | CSE | 77.66% | 163 |
| 16 | Gracelda Sweedal Serrao | CSE | 87.60% | 204 |
| 17 | Himani | CSE | 68% | 243 |
| 18 | Karthik B Nayak | CSE | 69.33% | 293 |
| 19 | Keerthi.R.Shetty | CSE | 68.66% | 142 |
| 20 | Manasa R Kulal | CSE | 64.67 | 143 |
| 21 | Mauresh M Naik | CSE | 78.66% | 234 |
| 22 | Meghana | CSE | 65.60% | 144 |
| 23 | Moksha Jeetendra Murudeshwara | CSE | 61% | 175 |
| 24 | Navya | CSE | 80.10% | 193 |
| 25 | Neha | CSE | 80% | 205 |
| 26 | Nikhil Naik | CSE | 81% | 306 |
| 27 | Poorvi Sunil Dev | CSE | 77% | 177 |
| 28 | Prathweesh | CSE | 65.33% | 228 |
| 29 | Rijesh S | CSE | 85% | 309 |
| 30 | Sagar H Poojary | CSE | 89.66 | 250 |
| 31 | Sakshi | CSE | 80% | 165 |

| | | | | |
|----|-----------------------------------|-------|--------|-----|
| 32 | Sameeksha Bekal | CSE | 53.67% | 136 |
| 33 | Samiksha | CSE | 78.60% | 160 |
| 34 | Sargam | CSE | 68% | 180 |
| 35 | Shree Rakshitha Rao | CSE | 61% | 259 |
| 36 | Shreehari Shenoy R | CSE | 60.33% | 312 |
| 37 | Shreeshesha G A | CSE | 69% | 297 |
| 38 | Shreya Prabhu | CSE | 89.33% | 220 |
| 39 | Sinchana J | CSE | 85% | 188 |
| 40 | Sunil Bhat | CSE | 64.66% | 251 |
| 41 | Suraj R | CSE | 74% | 280 |
| 42 | Sushanth | CSE | 76% | 130 |
| 43 | Thanmayee | CSE | 77% | 137 |
| 44 | Thejas B K | CSE | 53.66% | 138 |
| 45 | Vishnu Prasad | CSE | 71.33% | 281 |
| 46 | Adithya S Poojary | AI/DS | 60% | 209 |
| 47 | Manish Thingalaya | AI/DS | 70.60% | 210 |
| 48 | Mohammed Afreed | AI/DS | 73.60% | 211 |
| 49 | Mohammed Awad Tonse | AI/DS | 50% | 245 |
| 50 | Mohammed Suhan | AI/DS | 57.30% | 238 |
| 51 | Monisha Devadiga | AI/DS | 66.33% | 270 |
| 52 | Nishanth Shetty | AI/DS | 80.66% | 247 |
| 53 | Pavan S Poojary | AI/DS | 61.66% | 307 |
| 54 | Prajwal | AI/DS | 73.66% | 276 |
| 55 | Preeth shetty | AI/DS | 78% | 248 |
| 56 | Rishan Francis Menezes | AI/DS | 58% | 217 |
| 57 | Rithesh R | AI/DS | 73.66% | 249 |
| 58 | Sanjan Shetty | AI/DS | 69.33% | 219 |
| 59 | Sudeep S Prabhu | AI/DS | 80% | 318 |
| 60 | Zeenath Ziyen (34,390 extra paid) | AI/DS | 76.67% | 268 |
| 61 | Aviratha R Prabhu | AI/ML | 63.66% | 274 |
| 62 | H Adithyasuma Shetty | AI/ML | 62.33% | 315 |
| 63 | Kishan J | AI/ML | 59.60% | 237 |
| 64 | Manmitha | AI/ML | 65.66% | 264 |
| 65 | Rajath H S | AI/ML | 58.66% | 265 |
| 66 | Rakesh Hegde | AI/ML | 50.60% | 277 |
| 67 | Rithin | AI/ML | 52% | 240 |
| 68 | Samarth R Shetty | AI/ML | 58.66% | 314 |
| 69 | Shetty Rashik Rathnakar | AI/ML | 60% | 258 |
| 70 | Shravya | AI/ML | 60.32% | 291 |
| 71 | Shreesh A Devadiga | AI/ML | 62.66% | 278 |
| 72 | Sujeet Ganesh Shet | AI/ML | 58.66% | 286 |
| 73 | Tejas | AI/ML | 57.60% | 241 |
| 74 | Vamsh | AI/ML | 59.75% | 305 |

| | | | | |
|-----|------------------------------|-------|---------|-----|
| 75 | Vihaan S | AI/ML | 76% | 255 |
| 76 | Adithi S Salian | ECE | 84% | 282 |
| 77 | Akash K Patkar | ECE | 94.66% | 273 |
| 78 | Chetan Nayak | ECE | 92.30% | 224 |
| 79 | Dishan | ECE | 92% | 199 |
| 80 | Gagan | ECE | 55% | 185 |
| 81 | Gururaj Poojary | ECE | 67.33% | 225 |
| 82 | Karthik A Acharya | ECE | 89% | 186 |
| 83 | Krrish B Poojari | ECE | 84.33 % | 283 |
| 84 | Manohar | ECE | 76% | 227 |
| 85 | Manu D Acharya | ECE | 84.30% | 173 |
| 86 | Muhammad Shanawaz | ECE | 79.66% | 256 |
| 87 | Naveen S Devadiga | ECE | 76% | 212 |
| 88 | Nidhi Naveen Shetty | ECE | 86.00% | 303 |
| 89 | Niranjan Holla | ECE | 72.66% | 215 |
| 90 | Poojary Gaurav Srinivas | EcE | 74.66 | 194 |
| 91 | Prajna V Poojary | ECE | 79.66% | 216 |
| 92 | Pratham kundar | ECE | 84.33% | 289 |
| 93 | Prerana M Jogi | ECE | 72.66% | 284 |
| 94 | Rithesh Surendra Salian | ECE | 64% | 295 |
| 95 | Sachin | ECE | 93% | 285 |
| 96 | Sachin | ECE | 88% | 218 |
| 97 | Samaksh S Shetty | ECE | 72% | 317 |
| 98 | Sameeksha | ECE | 88% | 195 |
| 99 | Shravan Krishna | ECE | 75.66 | 201 |
| 100 | Sinchana B | ECE | 91.60% | 260 |
| 101 | Sriprerana P Acharya | ECE | 87.33% | 279 |
| 102 | Srivathsa S | ECE | 55.33% | 261 |
| 103 | Sujay L Bhat | ECE | 60% | 235 |
| 104 | Suman K Naik | ECE | 82.66 | 202 |
| 105 | Vasantha Poojary | ECE | 76% | 254 |
| 106 | Adharsh | Mech | 64% | 262 |
| 107 | Akshay Moolya | Mech | 54.66 | 263 |
| 108 | Arun Basavaras Vittappanavar | Mech | 56% | 222 |
| 109 | Manvith V Shetty | Mech | 83% | 316 |
| 110 | Samith | Mech | 85.33% | 257 |
| 111 | Sanith Kumar | Mech | 51.33% | 311 |
| 112 | Sharan Acharya | Mech | 76.33% | 267 |
| 113 | Sujith Salian | Mech | 98.33% | 287 |

The vacant seats are allotted to the following waitlisted candidates

| Sl. No | Name of the candidate | Program | % marks in qualifying exam | Merit (Rank) |
|--------|--------------------------|---------|----------------------------|--------------|
| 1 | Ananya Y Bangera | CSE | 83.33% | 108 |
| 2 | Arya Asween Desai | CSE | 91% | 9 |
| 3 | Aryan G | CSE | 58% | 37 |
| 4 | Ashraya Shetty | CSE | 81.30% | 38 |
| 5 | B . Ranjan Pai | CSE | 82% | 12 |
| 6 | Chandana | CSE | 53% | 47 |
| 7 | Darren Dsouza | CSE | 74.66 | 86 |
| 8 | Dhrethi | CSE | 69.66% | 65 |
| 9 | Disha S Poojary | CSE | 82% | 90 |
| 10 | Ganapathi Mallya | CSE | 93% | 95 |
| 11 | Harsha S Rao | CSE | 64.67% | 97 |
| 12 | Jeethan Welroy Fernandes | CSE | 81% | 33 |
| 13 | Keerthana | CSE | 88.66% | 6 |
| 14 | Khushi | CSE | 56.66% | 98 |
| 15 | Koushtubha | CSE | 71% | 99 |
| 16 | Krithi | CSE | 81% | 48 |
| 17 | Lavanya Shankar Moger | CSE | 94.33% | 109 |
| 18 | Laxmeesh V | CSE | 77% | 66 |
| 19 | Likhita | CSE | 82% | 91 |
| 20 | Lipika Nayak | CSE | 81.66% | 41 |
| 21 | Maanya | CSE | 86.66% | 34 |
| 22 | Maanya B C | CSE | 65% | 49 |
| 23 | Manoj Kumar | CSE | 87.83% | 51 |
| 24 | Nirmitha K Nagaraj | CSE | 79.66% | 21 |
| 25 | Nisha M B | CSE | 85.33% | 104 |
| 26 | Nishmitha | CSE | 83% | 52 |
| 27 | Panchami V Devadiga | CSE | 87.60% | 25 |
| 28 | Poorvika | CSE | 89% | 53 |
| 29 | Prakrathi | CSE | 87% | 123 |
| 30 | Pranav P K | CSE | 87% | 2 |
| 31 | Pratham G Kumar | CSE | 76% | 80 |
| 32 | Preethish D Souza | CSE | 76.66% | 81 |
| 33 | Sahana | CSE | 88.33% | 114 |
| 34 | Sameer Acharya | CSE | 87% | 36 |
| 35 | Samruddi | CSE | 73.66% | 83 |
| 36 | Sanya | CSE | 67% | 105 |
| 37 | Sarthak | CSE | 77.33% | 28 |
| 38 | Shashank Kamath | CSE | 56.66% | 45 |
| 39 | Shraddha | CSE | 73.67% | 70 |
| 40 | Shravan | CSE | 55% | 116 |
| 41 | Shreedhanya G Maddodi | CSE | 72.33 | 128 |
| 42 | Shreya Shetty | CSE | 69.66% | 19 |

| | | | | |
|----|-----------------------|-------|--------|-----|
| 43 | Shreyas Satish Bhat | CSE | 54.33% | 84 |
| 44 | Shrikari R bhat | CSE | 68.66% | 118 |
| 45 | Thrishna D Poojary | CSE | 91% | 29 |
| 46 | Vidyashree | CSE | 81% | 94 |
| 47 | Yashaswini | CSE | 87.33 | 121 |
| 48 | Arpitha Tantry | AI/DS | 89.66% | 55 |
| 49 | Arwin Jackson Maben | AI/DS | 89.50% | 191 |
| 50 | B. G Prarthana Hebbar | AI/DS | 65.66% | 203 |
| 51 | Bharathraj A Nayak | AI/DS | 74% | 32 |
| 52 | Dhanya | AI/DS | 87% | 174 |
| 53 | Nishan D Shetty | AI/DS | 90% | 145 |
| 54 | Pratheeksha Nayak | AI/DS | 73% | 35 |
| 55 | Prathik | AI/DS | 81% | 69 |
| 56 | Rakshitha | AI/DS | 79% | 43 |
| 57 | Sanvi Shettigar | AI/DS | 97% | 93 |
| 58 | Shetty Raksha Uday | AI/DS | 92% | 17 |
| 59 | Shri Raksha Bhat | AI/DS | 84 | 117 |
| 60 | Vandana V devadiga | AI/DS | 86% | 208 |
| 61 | Vighnesh | AI/DS | 67.66% | 190 |
| 62 | Abhijith | AI/ML | 83.67% | 140 |
| 63 | Anvith S Sherigar | AI/ML | 87% | 197 |
| 64 | Dhanraj L Poojary | AI/ML | 80% | 198 |
| 65 | Maneesh Shetty | AI/ML | 80.33% | 103 |
| 66 | Mayur | AI/ML | 84% | 174 |
| 67 | Mohammed Simak | AI/ML | 62% | 134 |
| 68 | Mourya Raj H N | AI/ML | 52.66% | 176 |
| 69 | Navya | AI/ML | 90% | 213 |
| 70 | Pavithra Nayak | AI/ML | 79.33 | 146 |
| 71 | Shriya Devadiga | AI/ML | 64.66% | 164 |
| 72 | Sinchana | AI/ML | 79.60% | 230 |
| 73 | Spoorthi | AI/ML | 75% | 119 |
| 74 | Supraja S M | AI/ML | 77.50% | 106 |
| 75 | Vandana | AI/ML | 88.67% | 30 |
| 76 | Vignesh Adiga | AI/ML | 75.67% | 182 |
| 77 | Abhinandan A Walvekar | ECE | 84.33% | 63 |
| 78 | Adithya V Acharya | ECE | 92.3 | 64 |
| 79 | Akshay | ECE | 91.33 | 132 |
| 80 | Ashrith | ECE | 80.66% | 166 |
| 81 | Bharath | ECE | 74.33% | 169 |
| 82 | Chandrika | ECE | 90% | 57 |
| 83 | Deeksha | ECE | 79% | 87 |
| 84 | Gowrav | ECE | 92.33 | 96 |
| 85 | K Raksha Nayak | ECE | 86.33% | 122 |
| 86 | Likhitha Nayak | ECE | 61% | 157 |

| | | | | |
|-----|-----------------------------|------|--------|-----|
| 87 | Manjushree | ECE | 55% | 42 |
| 88 | Manohar M | ECE | 87.66% | 67 |
| 89 | Mast Shetty Tanmay Bhujanga | ECE | 82.33% | 159 |
| 90 | Megha Raju Billava | ECE | 87% | 13 |
| 91 | Pradeep Salunkar | ECE | 92% | 79 |
| 92 | Rajani Tantry | ECE | 85% | 124 |
| 93 | Rupak K Devadiga | ECE | 79.67% | 126 |
| 94 | Sakshi S Shetty | ECE | 57.66% | 135 |
| 95 | Shamanth | ECE | 85% | 115 |
| 96 | Shreya U Shettigar | ECE | 63% | 60 |
| 97 | Shreyas U Shettigar | ECE | 79.33% | 61 |
| 98 | Sinchara | ECE | 51.66% | 129 |
| 99 | Swarnashree | ECE | 92% | 131 |
| 100 | Vachan C Achari | ECE | 52.66 | 73 |
| 101 | Vighnesh | ECE | 56% | 148 |
| 102 | Ashrith | Mech | 69 % | 141 |
| 103 | Athul | Mech | 70.33% | 167 |
| 104 | Ganga | Mech | 83.60% | 156 |
| 105 | Karthik K | Mech | 79.67% | 171 |
| 106 | Rakshith | Mech | 81.66% | 229 |
| 107 | Raviteja R Kulal | Mech | 93% | 206 |
| 108 | Sukesh U Ganiga | Mech | 69% | 189 |
| 109 | Vignesh | Mech | 73.30% | 139 |

Selection team for admission through Management quota: Principal and the HODs of Physics, Chemistry and Mathematics.

13. Information on Infrastructure and other resources Available:

Details of Class Rooms, Tutorial Rooms, Laboratories, Drawing hall and computer center

Class Rooms:

| Sl. No | Building Number | Building Name | Room Type | Number of Rooms | Total carpet area (m ²) |
|--------|-----------------|--------------------------|------------|-----------------|-------------------------------------|
| 1 | Block A | Administrative Block | Classrooms | 17 | 1514 |
| 2 | Block B | E&C Block | Classrooms | 6 | 599 |
| 3 | Block C | Civil & Mechanical Block | Classrooms | 5 | 475 |
| 4 | Block G | Library Block | Classrooms | 2 | 315 |

Tutorial Rooms:

| Sl. No | Building Number | Building Name | Room Type | Number of Rooms | Carpet area (m ²) |
|--------|-----------------|--------------------------|---------------|-----------------|-------------------------------|
| 1 | Block A | Administrative Block | Tutorial Room | 2 | 88 |
| 2 | Block B | E&C Block | Tutorial Room | 1 | 34 |
| 3 | Block C | Civil & Mechanical Block | Tutorial Room | 2 | 90 |
| 4 | Block G | Library Block | Tutorial Room | 1 | 40 |

Laboratories:

| Sl. No | Building Number | Building Name | Room Type | Number of Rooms | Carpet area (m ²) / No. of computers |
|--------|-----------------|-------------------------|------------|-----------------|--|
| 1 | Block A | Administrative Block | Laboratory | 8 | 742 |
| 2 | Block B | E&C Block | Laboratory | 7 | 687 |
| 3 | Block C | Civil & Mechanical lock | Laboratory | 4 | 538 |
| 4 | Block F | Laboratory Complex | Laboratory | 18 | 1670 |
| 5 | Block G | Library Block | Laboratory | 1 | 115 |

CAD Lab:

| Sl. No | Building Number | Building Name | Room Type | Number of Rooms | Carpet area (m ²) |
|--------|-----------------|---------------------|------------|-----------------|-------------------------------|
| 1 | Block A | Administrative lock | Laboratory | 1 | 107 |

Computer Center:

| Sl. No | Building Number | Building Name | Room Type | Number of Rooms | Carpet area (m ²) |
|--------|-----------------|---------------------|--------------|-----------------|-------------------------------|
| 1 | Block A | Administrative lock | Computer Lab | 1 | 273 |

Central examination facility, Number of rooms and capacity of each room

28 rooms with a capacity of 30 students in each room

Online examination facility with number of nodes, internet bandwidth..etc

All systems are connected to the internet, 570 Nodes with 1 GBPS internet bandwidth

Computing Facility:

- Internet Bandwidth: 1 GBPS
- Number and configuration of System: 570 (Dual core, i3, and i5 system processors)
- Total number of systems connected by LAN: 570 (All desktop systems)
- Total number of systems connected by WAN: All systems, also 30 Wi-Fi routers to connect laptops

Major software packages available:

| Sl. No. | Name | License / Part No. |
|---------|---|-------------------------------|
| 1 | Windows Server 2008 R2, Std/Ent – Mak B | VQT7Y-WH2QD-3CVJC-2RPKF-6269H |
| 2 | Windows Server 2008, Std/Ent Kms B | GR828-PJ39C-MHX6T-PYVWF-GDGMK |
| 3 | Windows Server 2008, Std/Ent Mak B | MPWFH-96Y22-FP6PM-RP8TK-44R49 |
| 4 | Windows Server 2008 R2, Std/Ent Kms B | 6KY4B-M7V8D-BD7X9-82Y96-K26YJ |
| 5 | Windows Server 2003 R2, X32 Edition | HYK7G-MH6JP-GYH3W-7F6R8-6GPM8 |
| 6 | WINDOWS 11 Home 55; WINDOWS Professional275 | Preloaded |
| 7 | Redhat Linux | RHF0377AP-R4 |
| 8 | Fedora | OPEN SOURCE |
| 9 | Ubuntu 22.04 | OPEN SOURCE |
| 10 | WisI 8.1 SNGL OLP NL Academic Legalization – 100 Nos. | 4HR-00400 |

Barrier-free built environment for disabled and elderly persons:

Ramps, Lift, Wheelchairs and accessible toilets are made available for disabled and elderly persons. Also, the admin block is provided with a lift facility.

Fire and safety certificate:

Issued by Office of the Chief Fire Officer, Karnataka Fire & Emergency Services, Mangaluru Ref No. 15/FSR/DFO/UDP/2024 dated 20-5-2024

Certificate link: <https://sode-edu.in/wp-content/uploads/2025/04/Fire-and-Safety-2024.pdf>

Hostel Facility:

The hostel facility is available for both boys and girls inside the campus. The Institute has aesthetically designed and ergonomically built separate hostels for boys and girls with all modern amenities and provision for recreational activities along with delicious and nutritious vegetarian food. The hostel administration is taken care of full-time wardens and a faculty member as the chief warden. Adequate water and power supply is ensured round the clock.

Capacity of the hostel: Boys Hostel for 154 students and Girls hostel for 142 students

Estimated cost of hostel accommodation and food charges:

| Room Type | No. of rooms | Hostel Charges per annum (Rs) | Food charges per annum (Rs) |
|-----------|--------------|-------------------------------|-----------------------------|
| 2 sharing | 42 | 44,000.00 | 42,000.00 |
| 3 sharing | 70 | 39,000.00 | |

Library:

The institute is a member of VTU E-consortium and the entire e-resource requirements are met through this membership with an annual membership fee of Rs. 1,00,000 per year and the fee for procuring the resources at Rs. 750/- per student per annum and that of PG at Rs. 1500/- per student per annum. The details about the available library books and resources are given below:

| Sl. No | Description | Numbers available |
|--------|---|-------------------|
| 01 | Volumes (Engineering) | 19214 |
| 02 | Titles (Engineering) | 4313 |
| 03 | Volumes (Management) | 309 |
| 04 | Titles (Management) | 170 |
| 05 | Journals (VTU Consortium) Engineering | 7520 |
| | (Major of the Journals are International) | |

| | | |
|----|---|-----|
| 06 | Journals (VTU Consortium) Management (Major of the Journals are International) | 212 |
| 07 | Journals (DELNET) Engineering (Major of the Journals are International) | 912 |
| 08 | Journals (DELNET) Management (Major of the Journals are International) | 240 |
| 09 | Digital Library with 10 Computers and Printing and reprography service | |
| 10 | Drillbit-Plagiarism Detection Software | |
| 11 | Library management software | |

E-Library facility / Remote access to library:

The Library uses the Easylib (Entire Automation System for Library) Software package, which is an integrated multi-user library management system that supports all in-house operations of the library. The software consists of modules on Registration, Acquisition, Cataloguing and Accessioning, Circulation, Periodicals, Members, Setup and Security, Digital Library, Online Public Access Catalog (OPAC), In/Out Management, and Reports. The books/journals can be accessed through OPAC, which facilitates the search for books by author, title, and edition. The Easylib package has been made more efficient by bar-coding the entire library collection.

Remote Access: Remote access through the mLibrary mobile App (Anywhere, Anytime Any device). Through the mLibrary mobile app users can access the library subscription and top open-access academic content including eLearning and multimedia at their fingertips. It gives 24*7 access to the resources that are subscribed to by the library and also to the open-access resources.

Library link: <https://sode-edu.in/facilities/central-library/>

Laboratory and workshops:

- The list of laboratories available in each department is given below:

Department of AI-DS and AI-ML:

| Sl. No | Room Number | Name of the Laboratory | Area (m ²)/ Computers (numbers) | Major facilities available |
|--------|---------------|------------------------|---|--|
| 1 | F106 | Computer Lab 1 | 81 | 36 i5 Systems with adequate open-source software |
| 2 | F107 and F108 | Computer Lab 2 and 3 | 150 | 36 i5 Systems with adequate open-source software |
| 3 | F109 | Computer Lab 4 | 75 | 36 i5 Systems with adequate open-source software |
| 4 | F110 | Computer Lab 5 | 82 | 36 i5 Systems with adequate open-source software |
| 5 | F111 | Computer Lab 6 | 80 | 36 i5 Systems with adequate open-source software |

Department of Civil Engineering:

| Sl. No | Room Number | Name of the Laboratory | Area (m ²)/ Computers (numbers) | Major facilities available |
|--------|-------------|------------------------------------|---|--|
| 1 | C001 | Concrete and Highway Materials Lab | 290.00 | Auto Clave Blaine's air permeability apparatus, Compression testing Machine, Vee bee consistometer, Concrete permeability equipment, Bitumen penetration equipment Bitumen ductility equipment, Marshal stability apparatus, Vibrating table, |
| | | | | Mortar mixing machine, Concrete Mixer, Ultrasonic Pulse velocity Machine, Rebound Hammer (Digital) |

| | | | | |
|---|-------|--------------------------------------|--------|--|
| 2 | | Models Lab | 45.00 | Various models |
| 3 | | Applied Engineering Geology Lab | 46.00 | Mineral Samples, Rock Samples, Models Charts, Mohr's Scale of hardness |
| 4 | C106 | Computer Aided Design Lab | 85.14 | Computers – 24 numbers |
| 5 | C202 | Environmental Engineering Lab | 137.00 | Electrical conductivity meter (digital), PH meter (digital) BOD incubator, Digital COD measurement device, Spectra Photometer, Flame Photometer, Turbidity meter, Jar test apparatus, Refrigerator, Double Distillation Unit |
| 6 | ASB06 | Geo Technical Engineering Laboratory | 230.00 | Hot air oven, Sieve shaker, Compaction apparatus, Permeability apparatus, Unconfined compression test apparatus, Direct shear apparatus, Tri-axial compression, test apparatus with pore pressure equipment Infrared Moisture Meter, Vane Shear Apparatus |
| 7 | C002 | Surveying Practice Lab | 61.50 | Plane table with accessories Auto level, Theodolite, Electronic Theodolite, Total Station |

Department of Computer Science & Engineering:

| Sl. No | Room Number | Name of the Laboratory | Area (m ²)/ Computers (numbers) | Major facilities available |
|--------|---------------|------------------------|---|--|
| 1 | A307 | Computer Lab 1 | 102 | 36 i5 Systems with adequate open source software |
| 2 | A309 | Computer Lab 2 | 102 | 36 i5 Systems with adequate open source software |
| 3 | F101 | Computer Lab 3 | 100 | 36 i5 Systems with adequate open source software |
| 4 | F102 | Computer Lab 4 | 92 | 36 i5 Systems with adequate open-source software |
| 5 | F103 and F104 | Computer Lab 5 and 6 | 145 | 72 i5 Systems with adequate open-source software |
| 6 | F111 | Computer Lab 7 | 80 | 36 i5 Systems with adequate open-source software |

Department of Electronics & Communication Engineering

| Sl. No | Room Number | Name of the Laboratory | Area (m ²)/ Computers (numbers) | Major facilities available |
|--------|--------------|------------------------|---|---|
| 1 | Ground floor | VLSI Lab | 76 | Arduino kits, Electrical VLSI tool, LTspice |
| 2 | I floor | DSP lab | 102 | MATLAB |

| | | | | |
|---|----------|--|-----|---|
| 3 | I floor | HDL lab | 102 | Xilinx, FPGA |
| 4 | I floor | Analog and digital Circuit lab/communication lab | 102 | Digital trainer kits, CRO, Power supplies, ICs, Microwave antenna testbench |
| 5 | I floor | Electronic Principle and circuit Lab | 102 | MultiSim |
| 6 | II floor | Project Lab | 102 | Space for mini project |
| 7 | II floor | Electrical Lab | 102 | Electrical equipment kits |

Department of Mechanical Engineering:

| Sl. No | Room Number | Name of the Laboratory | Area (m ²)/ Computers (numbers) | Major facilities available |
|--------|-------------|--|---|---|
| 1 | DB01 | Fluid Mechanics Lab | 230 | Francis Turbine Kaplan Turbine Pelton Turbine Centrifugal and Reciprocating pumps Air Compressors Equipment to Measure COD |
| 2 | F003(1) | Design Laboratory | 100 | Equipment to conduct Determination of Natural Frequency, Balancing of Rotating Masses, Critical Speed of a Rotating Shaft, Fringe Constant of Photo Elastic Material, Stress Concentration using Photo Elasticity, Equilibrium Speed, Sensitiveness, Power and Effort of Porter/Prowel /Hartnel Governor, Pressure distribution in Journal bearing, Principal Stresses and strains, Experiments on Gyroscope |
| 3 | F002(2) | Energy Conversion Engineering Laboratory | 100 | Four Stroke Diesel Engine Cut Section, Two Stroke Petrol Engine Cut Section, Planimeter, Able's Flash and Fire Point Apparatus, Pensky Martin's Flash and Fire Point Apparatus, Redwood Viscometer, Saybolt Viscometer, Torsion Viscometer, Boy's Gas Calorimeter, Bomb Calorimeter, Four Stroke Single Cylinder Diesel Engine Test Rig, V.C.R Petrol Engine Test Rig, Two Stroke Single Cylinder Petrol Engine Test Rig, Four Stroke Four Cylinder Petrol Engine Test Rig with Hydraulic Dynamometer (Morse Test). |
| 4 | F002(1) | Heat & Mass Transfer Laboratory | 100 | Thermal Conductivity of Metal Rod Apparatus, Composite Wall Apparatus, Pin- |
| | | | | Fin Apparatus, Natural Convection Apparatus, Forced Convection Apparatus, Emissivity Measurement Apparatus, Stefan Boltzman's Constant Apparatus, Parallel & Counter Flow Heat Exchanger Apparatus, Critical Heat Flux Apparatus, Condensation Apparatus, Vapor Compression Refrigeration Test Rig, Air Conditioning Cycle Test Rig, Transient Conduction Apparatus. |

| | | | | |
|---|----------------------|--|-----|---|
| 5 | F004(2) | Metallography and Material Testing Laboratory | 75 | Universal Testing Machine (60 Tons) Mechanical Type, Wear and Friction Tester, Magnetic Crack Detector 1000 amps, Ultrasonic Flaw Detector, Rockwell Cum Brinell Hardness Tester, Vickers Hardness Tester, Fatigue Testing Machine, Impact Testing Machine, Torsion Testing Machine, |
| 6 | F004(1) | Metrology and Mechanical Measurements Laboratory | 100 | Pressure Gauge Setup, Thermo Couple Setup, L.V.D.T. Setup, Load Cell Set Up, Strain Gauge Setup, Autocollimator Single Axis, Gear Tooth Verniers, Digital Vernier Caliper, Micrometers (0-25mm), Digital Micrometer (0-25mm), Mechanical Comparator, Floating Carriage Micrometer (2 wire / 3 wire), Slip Gauge 83pieces set, Profile Projector, Toolmaker's Microscope, Sine Center 200mm, Sine Bar 200mm, Granite Surface Plates. |
| 7 | F001 (1) and F001(2) | Workshop and Machine Shop Laboratory | 300 | All geared Lathe, Belt driven (Cone Pulley Type) Lathes 12 No.s, Universal Surface Grinder, Slotting Machine Milling Machines, Shaping Machines, Radial Drilling Machine, , Hydraulic power Hacksaw Machine, Bench Grinder. |
| 8 | F003(2) | Forging and Foundry Lab | 100 | Forging furnace Forging tools Mould boxes Foundry tools |
| 9 | C106 | CAD Lab | 107 | 32 si3 systems with solid edge, Auto CAD software |

Other Laboratories:

| Sl. No | Room Number | Name of the Laboratory | Area (m ²)/ Computers (numbers) | Major facilities available |
|--------|-------------|------------------------|---|---|
| 1 | AB004 | Language Lab | 112 | Computers, Language ;Lab software |
| 2 | AB005 | Physics Lab | 201 | Microscopes, various equipment to conduct first year lab |
| 3 | C202 | Chemistry Lab | 137.00 | Electrical conductivity meter (digital), PH meter (digital) BOD incubator, Digital COD measurement device, Spectra |

| | | | | |
|---|-------|-----------------------------|-----|---|
| | | | | Photometer, Flame Photometer, Turbidity meter, Jar test apparatus, Refrigerator, Double Distillation Unit |
| 4 | A110 | CAD Lab | 150 | 32 si3 systems with solid edge, Auto CAD software |
| 5 | A111 | Central Computer Center | 178 | Computers |
| 6 | AB001 | Research Center (Chemistry) | 20 | Facilities to conduct research work |
| 7 | A301 | Research Center (Physics) | 20 | Facilities to conduct research work |
| 8 | DB01 | Fabrication Lab | 102 | CNC Milling center, CNC Lathe, Welding machine, Computers..etc |
| 9 | F105 | Innovation Lab | 55 | Texas instrument kits, Make-it Kits, Computers |

Institute Innovation Council (IIC):

The innovation council helps to engage students in innovative and creative activities apart from regular academics by providing opportunities for hands-on activities. The institute has established the innovation council with the following objectives.

Objectives:

- To create awareness, educate, nurture and inculcate a culture of innovation among engineering students.
- To enable them to generate new ideas and become more innovative.
- To organize an Interdisciplinary project exhibition

Roles and Responsibilities of the Coordinator

- Enrolment of students as Innovation Council members and allow them to work on innovative projects.
- Periodic activities, workshops, and competitions to keep the spark of creativity, innovation, and design alive and thriving in students.
- Guidance for the development of innovative scientific solutions to solve everyday problems.
- To provide technical support in the form of basic tools, shackles, equipment, raw materials, and project manual/report.
- To monitor the activities of the innovation council.
- To encourage the students to apply for various funds for their innovative projects.

Achievements of the Institute Innovation Council (IIC):

- NIRF rank for innovation in the band of 150-300
- Received Rs. 2.25 Lakhs towards mentoring three institutes in innovation.

Institute social media cell:

The institute has established a Social Media Cell headed by a senior faculty member. This cell updates the activities and programs organized in the institute in social media like Facebook, Instagram, and LinkedIn. Also, the cell publishes the institute's promotional information (Text, pictures, and videos) on social media. It also supports in live streaming of programs conducted in the institute.

Compliance of Academic Bank of Credit in the institute: Yes. Implemented.

Short video of the infrastructure and facilities of the institute:

<https://drive.google.com/file/d/1YF8D3f1YLF-2EMV2VPsSCvheqVJaCgiw/view?usp=sharing>

Sports and Games facility:

The Department of Physical Education, in addition to guiding the students in physical activities and organizing sporting events and games, trains and prepares students for various inter-collegiate and University level athletic competitions and tournaments. Facilities for various indoor and outdoor games like carom, chess, Table Tennis, Shuttle badminton, cricket, volleyball, basketball, handball and throw ball are available for the students. Also, a Multi-gym facility has been provided for the students and staff.

Details of the Department of Physical Education and sports/games facilities:

- Department Office
- Athletic Field & Cricket Field
- Carrom, Chess and Table Tennis facilities
- Basketball court (Outdoor Court, Concrete flooring)
- Shuttle badminton (4 - Outdoor Courts, Interlock flooring)
- Volleyball & Throw ball Court
- Kabaddi Court
- Ground Store Room
- Gymnasium

Teaching–Learning Process:

- Curricula and syllabus for each of the Programmes are approved by the University.
<https://vtu.ac.in/en/b-e-scheme-syllabus/#menu0>
- Academic Calendar of the University
<https://vtu.ac.in/en/?s=ACADEMIC+CALENDAR>
- Academic Time-Table of the Institute:
<https://sode-edu.in/wp-content/uploads/2025/04/Class-Time-Table-24-25-ODD.pdf>

Soft Skill Training facility:

The institute takes care of soft skill training for the students in the following ways: The soft skill training commences in the third semester BE program and extends up to the seventh semester covering various aspects of soft skill training with almost 30 hours of training per semester. The institute hires trained personnel for this program. Also, few faculty members of the institute are well-versed in soft skill training and the follow-up sessions will be conducted by the internal trainers.

Continuous Internal Evaluation (CIE):

The Semester Examination and Continuous Internal Evaluation procedure are prescribed by Visvesvaraya Technological University, Belagavi and the Institute follows the same. Apart from this, the institute conducts various technical and non-technical events to assess the student's performance.

Formative Assessment

The formative assessment refers to a wide variety of methods that teachers use to conduct in-process evaluations of student comprehension, learning needs, and academic progress during the course. CIE is implemented in academic areas using different evaluation techniques like internal assessment tests, quizzes, seminars, assignments, internships, etc., as prescribed by the university. The performance of the students in the internal assessment tests is regularly recorded and monitored by the mentors in the Cumulative Performance Diary (CPD) as well as in the Institute Management Information System (MIS). Results of internal tests and university examinations are analyzed and meetings are conducted to discuss the performance of the students. Parents of the poor performers are requested to meet the mentors, to have a close discussion about the student's performance. As a part of continuous internal evaluation, students' Leadership qualities, presentation skills, etc. are recorded in CPD by the respective mentors.

Summative Assessment

At the end of the semester, the assessment of students in academic and non-academic areas are included in the summative assessment. The summative assessment in the academic areas, like, the subject knowledge, the skill set of the students, etc. is tested by the university examinations at the end of the semester. Practical courses and seminars are also a part of SEE as per the guidelines of VTU.

14. Placement and Training

The training and placement cell of the institute conducts soft skill, aptitude and technical training to students to enhance the job opportunity. The cell also strives hard to bring the companies for campus recruitment. The Placement process is initiated with a clear focus on all levels of companies that are contacted and invited for the campus recruitment drive which matches all the academic levels of the students.

The placement cell works as a liaising office between the industry and academia in organizing guest lectures, internships, industry visits, industry-linked projects and campus placements. It helps the students to develop contacts with companies while undergoing internships and doing their project work in their final semester.

The college has a fully furnished placement department to conduct the training and interview process. The department has 3 seminar halls, 2 GD rooms, and 8 interview cabins to conduct the campus pool selection process for 500+ students.

Campus placement in last three years with Min/Max/Average salary

| Academic Year | No. of job offers to students | Minimum salary | Maximum Salary | Average salary |
|---------------|-------------------------------|----------------|----------------|----------------|
| 2021-22 | 199 | 1,44,000.00 | 8,00,000.00 | 4,10,000.00 |
| 2022-23 | 248 | 3,00,000.00 | 8,50,000.00 | 4,20,000.00 |
| 2023-24 | 162 | 4,00,000.00 | 8,50,000.00 | 4,50,000.00 |
| 2024-25 | 291* | 4,00,000.00 | 8,50,000.00 | 4,50,000.00 |

*ongoing

Link for Placement Cell: <https://sode-edu.in/placement/>

15. List of Research Projects/ Consultancy Work

a. Research Projects Undertaken during the last five years

| Sl.No. | Dept. | Name of the Project | Name of the PI/CI | Dept. of PI | Year of Award | Amount in Lakh. | Duration | Name of the Funding Agency | Type (Govt/ Non Govt.) |
|--------|-------|--|--|------------------------|---------------|-----------------|----------|---|------------------------|
| 1 | MECH | Development of Biodegradable Implant Materials | Dr. Gajanan Anne (PI) / Dr. Reenna Kumari (CI) | Mechanical Engineering | 2021-22 | 12 Lakhs | 2 Years | Visvesvaraya Technological University, Belagavi Under VTU Research Grants Scheme - 2021 | Government |

| | | | | | | | | | |
|---|------|---|---------------------|------------------------|---------|--------------|------------|---|------------|
| 2 | MECH | Fabrication and Study of Biodegradable Leaf Plates | Dr. Sudarshan Rao K | Mechanical Engineering | 2021-22 | 0.30 Lakhs | 6-8 Months | Karnataka Science and Technology Academy, Science and Technology Department, Govt. of Karnataka, Bengaluru Under Short-Term Research Scheme 2021-22 | Government |
| 3 | MECH | Development of High Strength Corrosion Resistant Magnesium Alloy for Biodegradable Implants | Mr. Aditya Kudvas | Mechanical Engineering | 2023-24 | 9.35 Lakhs | 3 Years | Ministry of MSME, Government of India for innovative idea under National Level MSME Idea Hackathon 2.0. | Government |
| 4 | MECH | Development of Tree D-Limber for Shade Trees in Coffee Plantation | Mr. Karthik V | Mechanical Engineering | 2023-24 | 10.625 Lakhs | 3 Years | Ministry of MSME, Government of India for innovative idea under National Level | Government |

| | | | | | | | | | |
|---|-----|---|-------------------|---|---------|------------|--------|--|----------------|
| | | | | | | | | MSME Idea Hackathon 2.0. | |
| 5 | ECE | A Novel Approach for Efficient Text Document Summarization of Kannada Script | Mr. Sachin S Bhat | Electronics & Communication Engineering | 2019-20 | 1 lakh | 1 year | Visvesvaraya Technological University (TEQIP) | Non Government |
| 6 | ECE | Building Database of Halegannada Characters Used in Kannada Inscription and Study of their Character Recognition Method | Dr. Sachin S Bhat | Electronics & Communication Engineering | 2021-22 | 0.35 lakhs | 1 year | Karnataka Science & Technology Academy | Government |
| 7 | ECE | Sensor Based Device for Predicting Moisture Content of Agricultural Field and Safe Bearing Capacity of Soil | Dr. Sachin S Bhat | Electronics & Communication Engineering | 2021-22 | 1.25 lakhs | 1 year | Karnataka State Council For Science And Technology | Government |
| 8 | ECE | Surgical Sponge Detection System | Dr. Sachin S Bhat | Electronics & Communication | 2022-23 | 11.5 lakhs | 1 year | Government of India | Government |

| | | | | | | | | | |
|---|-----|---|-------------------|---|-----------------|----------|--------|-------------------------|------------|
| | | | | Engineering | | | | | |
| 9 | ECE | To assist the Police department in capturing the accident information on-site with minimal manual inputs and to register an online First Information Report | Dr. Sachin S Bhat | Electronics & Communication Engineering | 20 22- 23 | 10 lakhs | 1 year | Government of Karnataka | Government |

b. Research/consultancy related activities

| Department: Civil Engineering: | | | |
|--------------------------------|---|---|---------------|
| Sl.No. | Name of the Client | Type of Consultancy | Amount in Rs. |
| 1 | Nirmithi Kendra | Third Party Consultancy work for projects in around Udupi | 10,00,000 |
| 2 | Vinith S Amin, Udupi | Material Test | 7,00,000 |
| 3 | Associate Builders and Constructions, udupi | Material Test | 7,00,000 |
| 4 | M/S SKS Karkala Infra Projects Pvt. Ltd. Karkal | Material Test | 5,00,000 |
| 5 | Makara Enterprises, Kaup | Material Test | 2,00,000 |
| 6 | JNS Constructions | Material Test | 50,000 |
| 7 | Shrinidhi Blocks | Material Test | 10,000 |
| 8 | Assistant Executive engineerk.U.W.S & D Board, Sub Division,Mangalore | Material Test | 10,000 |
| 10 | SMC Infrastructure Pvt Ltd Udupi | Material Test | 10,000 |
| 11 | Nirmala Construction Ajjarkadu, Udupi | Material Test | 10,000 |
| 12 | Dhanik S Shetty | Material Test | 10,000 |

| | | | |
|----|---|----------------|--------|
| 13 | Apex Consultancy | Material Test | 10,000 |
| 14 | Baliga Fishnets | Material Test | 10,000 |
| 15 | AG Associates | Material Test | 10,000 |
| 16 | Carmel English School | Stability test | 11,800 |
| 17 | Anandatirtha Degree and PU College | Stability test | 11,800 |
| 18 | Dr. G. Shankar Government Women's First Grade College and P. G Study Center Ajjarkad, Udupi | Stability test | 11,800 |
| 19 | Government First Grade College, Hiriadka | Stability test | 11,800 |
| 20 | Little rock | Stability test | 11,800 |
| 21 | Mulki Sunder Ram Shetty College MSRS | Stability test | 11,800 |
| 22 | St. Cecily's higher primary school | Stability test | 11,800 |
| 23 | St. Francis Xavier English Medium school Udyavara | Stability test | 11,800 |
| 24 | St. Lawrence Eng. Med. High School, Moodubelle | Stability test | 11,800 |
| 25 | SVH High school | Stability test | 11,800 |
| 26 | SVH Primary and Nursery | Stability test | 11,800 |
| 27 | Adiudupi English Medium and Higher Primary School | Stability test | 11,800 |
| 28 | Creative PU college | Stability test | 11,800 |
| 29 | Government First Grade College | Stability test | 11,800 |
| 30 | IMS Manipal Hotels Pvt. Ltd. Manipal, Udupi | Material Test | 10,000 |
| 31 | Sode Vadiraja Matha | Material Test | 10,000 |
| 32 | Ultratech Cement Limited, Industrial Area, Manipal. | Material Test | 10,000 |

Department: Mechanical engineering

| Sl.no. | Name of the client | Type of consultancy | amount |
|--------|--------------------|---|--------|
| 1 | SMVITM, Bantkal | Ceiling Fan Painting (60 Fans) | 6000 |
| 2 | SMVITM, Bantakal | Fabrication of Racks | 6000 |
| 3 | External- Sandeep | S S Plate (Strainer) Drilling Work (1 No)- 350 Holes per Plate) | 6000 |
| 4 | External | Fabrication of Garden Pot stand | 1800 |
| 5 | External- Sandeep | Machining of COP & DRAG | 5000 |

| | | | |
|----|---|---|-------|
| 6 | External- Sandeep | Shaft Turning- Flange | 1000 |
| 7 | External- Sandeep | Bearing Seating and Profile Milling | 3000 |
| 8 | External-Lingaraj K Ritti, Assistant Professor, Mech,smvitm, Bantakal | Ball Burnishing | 3500 |
| 9 | External-Aditya Kudva S, Assistant Professor, Mech,smvitm, Bantakal | Fabrication of Frame | 1000 |
| 10 | External | Fabrication of M S Frame | 354 |
| 11 | SMVITM, Bantkal | Fabrication of Racks | 3000 |
| 12 | External | Fabrication of G I Tube Stand | 3000 |
| 13 | External- Sandeep | S S Plate(Strainer) Drilling Work (1 No)- 350 Holes per Plate) | 4000 |
| 14 | External- Sandeep | Machining of COP & DRAG | 5000 |
| 15 | SMVITM, Bantkal | Alteration Work of Grill Gate at Bhootaraj Temple | 0 |
| 16 | SMVITM, Bantkal | Rework of Stair Case Railings at Main Building | 0 |
| 17 | External-Dr. Ganesh Aithal, Vice Principal, SMVITM, Bantakal | Fabrication of Clamps | 950 |
| 18 | External- Dr. H Udaya Prasanna, Professor, Mech,smvitm, Bantakal | Fabrication of Garden Stand | 2700 |
| 19 | External- (Mr. Sudarshan Rao, Flower Decorator, Padubidri) | Fabrication of Metal Welcome Arc | 4800 |
| 20 | External-Durga Parameshwari Temple, Nandikoor | Fabrication of Metal Structure | 1200 |
| 21 | External- Sandeep | S S Plate (Strainer) Drilling Work (1 No)- 350 Holes per Plate) | ----- |
| 22 | External | Pump Mounting Bracket Machining | 4000 |
| 23 | External- Student- GURURAJA S HEBBAR (17me021) | Student Project Work- Profile milling | 400 |
| 24 | External-Student- SHAMAN HEGDE (4MW17ME056) | Student Project Work- Turning and Bearimng Seating | 300 |
| 25 | External-Student- ABHIJITH Civil Engg. Dept. | Student Project Work- Acrylic sheet profile Milling | 400 |
| 26 | External- Manjunatha S, Assistant Professor,Dept. Of Mechanical Engineering, SMVITM, Bantakal | Drilling and Counter Bore, Milling Machine | 300 |

| | | | |
|----|---|---|-------|
| 27 | External- Mr. Srikanth Shettigar, Lab Supervisor, Dept. Of Mechanical Engineering, SMVITM, Bantakal | Mechanical Work- Bush Turning | 500 |
| 28 | External- Student- SHAMAN HEGDE (4MW17ME056) | Student Project Work- Turning and Bearing Seating | 5000 |
| 29 | External-Student- Prathamesh (4MW17ME045) | Student Project Work- Turning and Bearing Seating | 3000 |
| 30 | External-Student- ABHIJITH Civil Engg. Dept. | Student Project Work- Acrylic sheet profile Milling | 1500 |
| 31 | External-Student- Nidinath V Shetty (4MW16ME050) | Student Project Work- Milling & Turning, Machining | 1000 |
| 32 | External-Sundeet Soares | CNC Milling-Rework Casting & Plate | 800 |
| 33 | External-Principal, NMAMIT, Nitte | CNC Milling Machining Charges | 1500 |
| 34 | External-Ananda Theertha Vidyalaya | Table Mounted Mobile Stand | 3800 |
| 35 | External-Sundeet Soares | S S Plate (Strainer) Drilling Work (1 No)- 350 Holes per Plate) | ----- |
| 36 | SMVITM, Bantkal | Fabrication Work of Power House Roofing | 20000 |
| 37 | External | Fabrication of Window Grill | 4000 |
| 38 | External | Fabrication of Conch Arc for Decorative Purpose | 1000 |
| 39 | External | Fabrication of Butter Milk Machine Stand | 200 |
| 40 | External | Inspection Report on Chapathi, Poori, Parota Making Machine | 5000 |
| 41 | External | Welding Work of Bio Fuel Stove Stand | 100 |
| 42 | Internal | Fabrication Work of Power House Fencing | 15000 |
| 43 | External | Fabrication of CNC Machining Work | 500 |
| 44 | Internal | Fabrication of Battery stand | 1000 |
| 45 | External | Fabrication Work of Decorative Arc | 1500 |
| 46 | External | Fabrication Work of Decorative item | 4000 |
| 47 | External | Fabrication Work of Windows | 1600 |
| 48 | External | Fabrication Work of Garden Stand | 4000 |

| | | | |
|----|----------|--|------|
| 49 | External | Fabrication work of Welded Angle Bracket | 150 |
| 50 | External | Fabrication of Frame Work (IRON) | 2500 |
| 51 | External | Inspection Report Submission Car bearing Registration No: KA-20MB 6790 (Dr. Jayakrishna Nayak) | 2000 |
| 52 | External | Fabrication Work of Decorative Arc | 2190 |
| 53 | External | Fabrication Work to Temple for Decorative Arc | 4000 |
| 54 | External | Fabrication Work of M S Angle Rack(5' * 3') | 3040 |
| 55 | External | Fabrication Work of G I Tube Stand | 2400 |
| 56 | External | CNC Consultancy Work | 300 |
| 57 | External | Fabrication Work Labour Cahrges | 2000 |
| 58 | External | CNC Consultancy Leth Work | 300 |
| 59 | External | Fabrication Work Labour Cahrges | 1500 |
| 60 | External | Fabrication Works | 3500 |
| 61 | External | Fabrication Work | 500 |
| 62 | External | Fabrication Work of Ladder | 2400 |

c. MoUs/Collaborations/Linkages

| Sl.No. | Name of the MoUs/Collaborations/linkages | Collaborating Agency | Duration of MoUs/Collaborations/linkages |
|--------|--|--------------------------------|--|
| 1 | Skill Based Training , Industrial Visit | EZ Technologies | 21st October 2024 |
| 2 | Skill Based Training | Comedkares | 05/02/2024 - 05/02/2027 |
| 3 | R&D projects | Capital Equipment Services Ltd | 05/10/2023 - 05/10/2026 |
| 4 | Online Resources | Infosys Limited | 27/09/2023 - 27/09/2028 |
| 5 | Internship | Quantum Learning | 24/09/2024 |
| 6 | Project Based Learning | Manipal Academy of | 15/02/2023 - 15/02/2026 |

| | | | |
|----|--|--|-------------------------|
| | | Higher Education | |
| 7 | Skill Development Programs | St. Mary's College , Shirva | 12-06-2020 |
| 8 | Placement | Reference Globe | 26/09/2019 |
| 9 | Training | Zestech global pvt. ltd. | 19/09/2018 - 19/09/2021 |
| 10 | Skill Development Programs | Sangam One Connected Services Pvt. Ltd. | 01/08/2018 - 01/08/2019 |
| 11 | Research Activity | Cere Labs Pvt. Ltd. | 23/03/2017 - 12/2/2022 |
| 12 | Placement Recruitment Training | Mangalore Infotech Pvt. Limited, Mangalore | 2023-27 |
| 18 | Placement Recruitment Training | Zestech Global, Bengaluru | 2018-19 |
| 20 | Placement Recruitment Training | J V Global, Bengaluru | 2019-20 |
| 25 | Placement Recruitment Training | FACE, Coimbatore | 2019-20 |
| 28 | Placement Recruitment Training | Base foundation | 2020-21 |
| 29 | Placement Recruitment Training | Seventh Sense Talent Solutions | 2022-23 |
| 35 | Placement Recruitment Training | 10 Seconds | 2022-23 |
| 37 | Internship | Alar Innovations Pvt Ltd ,Kumta | 1YEAR(2023) |
| 38 | Internship | Load Controls India Pvt Ltd | 1YEAR(2023) |
| 39 | Internship | V I Solutions | 1 years(2022) |
| 40 | Internship | CloudE Mysuru | 3YEARS(2018) |
| 41 | Internship | CVC Pvt. Ltd Bangalore | 2014 - 2018 |
| 42 | Internship | Sky Skill Academy | 1 year(2022) |
| 43 | Trainig- Internship- Placement - Arrangind Technical / Guest Lectures, Help Industrial Visit | Sristi Ventures, Ecowall, Padubidri | 3 Years(2021) |

| | | | |
|----|--|--|--|
| 44 | Trainig- Internship- Placement - Arrangind Technical / Guest Lectures, Help Industrial Visit | AGRIMA, Roof & Façade Systems, Bengaluru | 3 Years |
| 45 | V&G Industrial testing laboratories PVT . LTD | Mr. Vittal M Poojary and Mr.Girish Bhat | from 25th March 2019 effect for a period of 36 month |
| 46 | Reference Globe | Mr. Nag Kukkadapu | 26-Sep-19 |
| 47 | Focus Academy for career Enhancement (FACE) | | 23rd January 2020, effect for a period of 3 year |
| 48 | Indian Society for Training & development (ISTD) | Prof. Ramakrishna Chadaga | 04-Jun-20 |
| 49 | St. Mary's College | Dr. Herald Ivan Monis (Principal) | 12th June 2020 |
| 50 | Manel Srinivas Nayak Institute of Management | Dr. Molly S Chaudhuri (Principal) | 12-Jan-21 |
| 51 | Kanara Chamber of Commerce & Industry(KCCI) | Mr. Shashidhar Pai Maroor | 04 February 2022, effect for a period of 3 year |
| 52 | Great Lakes E-learning Services Pvt. Ltd | Mr. Arjun Nair (Co- Founder) | 08-Feb-21 |
| 53 | Poornaprajna institute of Management,Udupi | Dr. Bharath V (Director) | 21-03-2021, effect for a period of 60 months |
| 54 | Sristi Ventures, Ecowall | Mr. Bhoopathy Shetty | 22 September 2021, effect for a period of 3 year |
| 55 | Mangalore Infotech Solution PVT. LTD | Mr. Prashanth Shenoy (CEO) | 21-Mar-23 |
| 56 | Manipal Academy of Higher Education | Dr. P. Gridhar Kini | 15-02-2023, effect for a period of 3 year |
| 57 | Rooman Technologies PVT LTD | Mr. Jayanth V (Director) | 20-Nov-23 |
| 59 | COMEDKARES | Dr. S Kumar (Executive Secretary) | 05-02-2024, effect for a period of 3 year |
| 60 | Mirafra Software Tech Pvt. Ltd | Mr. Abhishek Shukla (Director) | 15 November 2022, effect for a period of 3 year |
| 61 | Manipal Skill Development Center | The Registrar, MSDC, Mnaipal | 04-Jun-20244 |
| 62 | Section Infin 8 | Mr. Vishwas US | 24-Oct-2024 |
| 63 | Kakunje Software ltd | Mr. Gopalkrishna | 02- Sept- 2024 |

| | | | |
|--|--|----------------------------|--|
| | | Bhat. Managing Director | |
|--|--|----------------------------|--|