

# SHRI MADHWA VADIRAJA INSTITUTE OF TECHNOLOGY AND MANAGEMENT

(A unit of Shri Sode Vadiraja Mutt Education Trust ®)  
VISHWOTHAMA NAGARA, BANTAKAL, UDUPI

## An Affiliated Institution

Affiliated to VTU, Belagavi, Approved by AICTE, New Delhi

Accredited by NBA (BE –CSE, ECE) and NAAC with A



# SMVITM

## MANDATORY DISCLOSURE

## Table of Contents

1.	Name of the Institution .....	1
2.	Name and address of the Trust and the Trustees .....	1
3.	Name and Address of the Principal.....	1
4.	Name of the Affiliating University .....	1
5.	Governance .....	2
6.	Programmes offered: .....	7
7.	Faculty .....	8
8.	Fee Structure .....	9
9.	Admission .....	11
10.	Admission Procedure .....	11
11.	List of applicants (2023-24): .....	12
12.	Results of Admission under Management Seats/Vacant Seats.....	18
13.	Information on Infrastructure and other resources Available: .....	24
14.	Placement and Training .....	32

## 1. Name of the Institution

SHRI MADHWA VADIRAJA INSTITUTE OF TECHNOLOGY AND MANAGEMENT

Area: Vishwothama Nagara

Post: Bantakal

Dist: Udupi

Pin: 574 115

Telephone: 0820-2484182 / 7483031199 / 9611615001

Fax: 0820-2484184

## 2. Name and address of the Trust and the Trustees

### Trust:

Shri Sode Vadiraja Mutt Education Trust (R)

Bhoovaraha Complex

Car Street, Udupi

Pin: 576 101

Phone: 0820-4294005

### Trustees:

1. H. H. Shri Vishwavallabha Theertha Swamiji  
President  
Shri Sode Vadiraja Matha Education Trust  
Car Street, Udupi, Pin: 576101  
Phone: 0820-4294005  
trust@sode-edu.in
2. Shri. P. Srinivasa Tantry  
Vice President  
Shri Sode Vadiraja Matha Education Trust  
Car Street, Udupi, Pin: 576101  
Phone: 0820-4294005
3. Shri. Rathnakumar  
Secretary  
Shri Sode Vadiraja Matha Education Trust  
Car Street, Udupi, Pin: 576101  
Phone: 0820-4294005
4. Prof. B. S. Revankar  
Trustee  
Shri Sode Vadiraja Matha Education Trust  
Car Street, Udupi, Pin: 576101  
Phone: 0820-4294005
5. Shri. H. V Gowthama  
Trustee  
Shri Sode Vadiraja Matha Education Trust  
Car Street, Udupi, Pin: 576101

## 3. Name and Address of the Principal

Dr. Thirumaleshwara Bhat

Principal

0820-2589182 / 9449330555

principal@sode-edu.in

## 4. Name of the Affiliating University

Affiliated to Visvesvaraya Technological University, Belgaum, Karnataka State

## 5. Governance

### Members of the Governing:

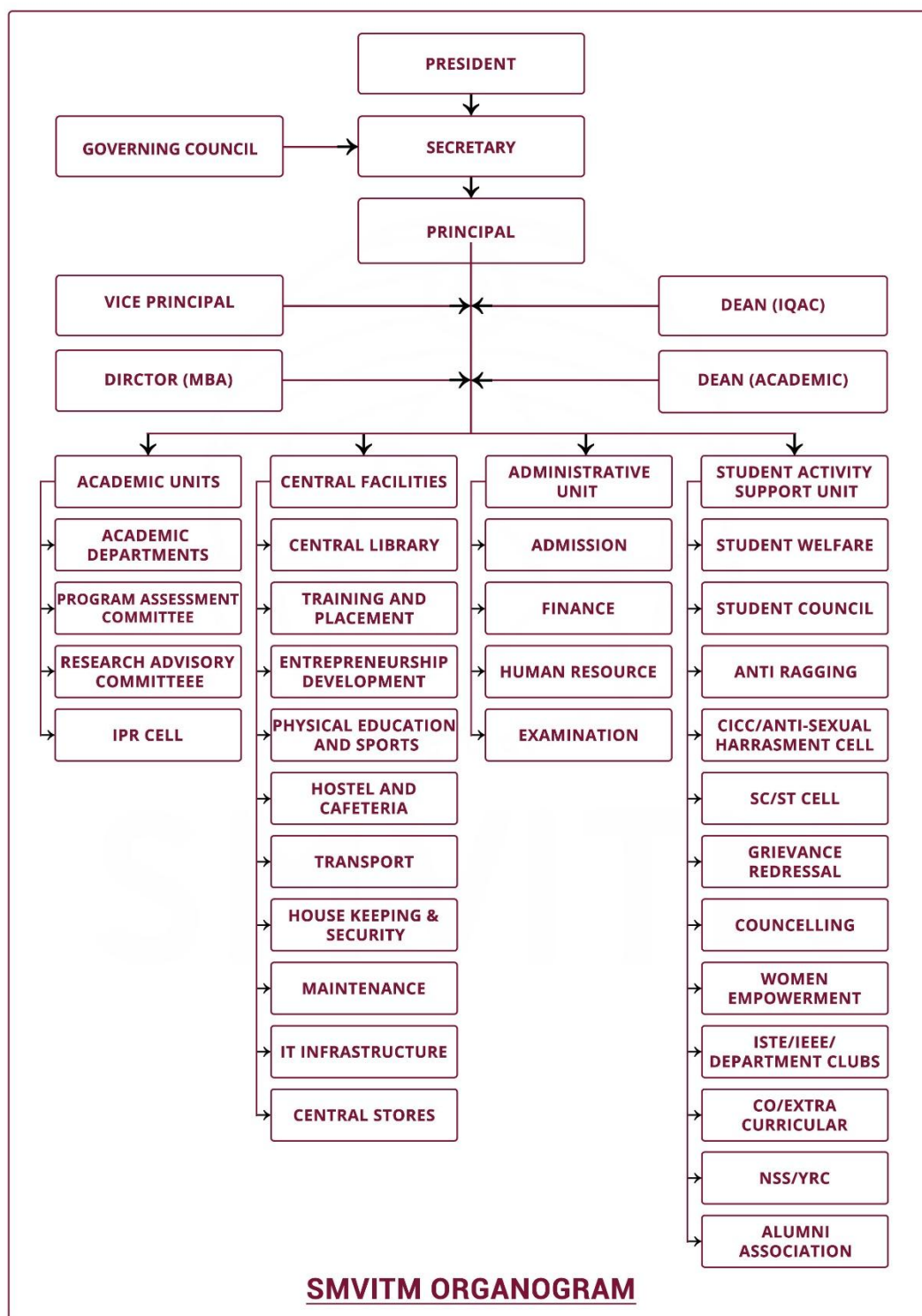
Members of the Governing Council and their brief background are as follows:

Sl. No	Name	Designation / Profession
1	H. H. Shri Vishwavallabha Theertha Swamiji	Chairman of the trust Pontiff of Shri Sode Vadiraja Matha
2	Shri. Rathnakumar	Secretary of the institute
3	Dr. Udipi Srinivas	Member of the Governing Council Former Professor, IISc, Bengaluru
4	Dr. S. G. Gopalakrishna	Member of the Governing Council Director, NCET Bengaluru
5	Shri. B. Y. Rajeshwar Singh	Member of the Governing Council Industrialist
6	Dr. Gopala Mugeraya	Member of the Governing Council Vice President (Technical), NITTE University
7	Shri. Sunder Madakshira	Member of the Governing Council Head, Marketing, Adobe India Pvt. Ltd., Bengaluru
8	Shri. P. Ramadas	Member of the Governing Council MD, Ace Manufacturing Systems Ltd. Bengaluru
9	Dr. M. S. Moodithaya	Member of the Governing Council Vice Chancellor, NITTE University
10	Dr. Radhakrishna S. Aithal	Member of the Governing Council Head, Skill Development Centre, Manipal
11	Shri. Jagadish Acharya	Member of the Governing Council Former CEO, Asian PPG
12	Shri. Harsih Belman	Member of the Governing Council Head, Premier Investments, Udupi
13	Shri. Nanda Kumar	Member of the Governing Council
14	Shri. Shamasundar H.S	Member of the Governing Council Paajaka Consultancy Services, Bengaluru
15	Dr. Ashwath M U	University Nominee Principal, BIT Bengaluru
16	Dr. P G Diwakar	Former Scientific Secretary, ISRO Bangalore
17		Member of the Governing Council AICTE representative
18		Member of the Governing Council Govt. of Karnataka representative
19	Dr. Thirumaleshwara Bhat	Member Secretary Principal of the Institute
20	Dr. Nagaraj Bhat	Staff Representative Professor, Dept. of Computer Science & Engg

### Frequency of the Board Meeting:

Bi-annually

## Organizational chart and processes:



The institute is established by H. H. Shri Vishwvallabha Theertha Swamiji in the year 2010 with the objective of providing quality engineering education at an affordable cost. The Institution is managed by Shri Sode Vadiraja Mutt Education Trust ®, under the aegis of Shri Sode Vadiraja Matha, Udupi which is known for its service to society. To enhance and sustain quality professional education on par with the best in its class institution, a robust structure has been established.

The Governing Council (GC) is the chief policy-framing body of the Institute. The president of the Institute is the Chairman of the GC, which holds meetings at least twice a year and takes all policy decisions for the institute. The institute trust has members who have served the industry/academia for quite a long period. The Principal is the Secretary of the Governing Council.

The Principal and the Heads of Departments monitor the academic, administrative, and student-related matters in the Institute. Various committees coordinate the routine activities and work in the smooth functioning and development of the Institute.

## **Involvement of Faculty and students in academic affairs/improvements**

### **Faculty Involvement:**

Faculty members are involved in PAC (Programme Assessment Committee), DAB (Departmental Advisory Board), and IQAC (Internal Quality Assurance Cell) to solicit ideas and opinions to strengthen the system. In addition, faculty members are leading the different supportive committees for the smooth functioning of the Institution.

### **Student Involvement:**

The Institute strongly believes in Outcome Based Education and involves the students in experiencing the authority and responsibilities and to ensure that the students imbibe graduate attributes adopted by the institute. All the students are provided a fair opportunity in all the affairs of the Institute, viz., curricular, co-curricular, and extracurricular activities.

The departments have a minimum of two students as representatives from each section to bring academic matters to the forum initially at the department level and the institutional level. All the departments conduct meetings with the student class representatives after every internal test to address academic-related matters. Apart from this, the Management conducts a yearly meeting with class representatives to solicit their opinions regarding academic and institutional facilities. All the departments have a department student chapter/society, professional associations, and various social clubs. The Head of the Department, staff, and students of the respective departments in consultation with the Principal choose the office bearers. In addition, the students are actively involved in the Outcome based Education system to strengthen and sustain the teaching-learning process. Student representatives are also involved in the PAC, DAB, and IQAC. Further, the institution ensures students' involvement in various institute-level academic and administrative committees to create a conducive environment for the overall development of the students and to understand ground reality from the student's perspective. Moreover, their association with these committees ensures improvement in the POs such as team building, professional ethics, and the role of an engineer in society, the environment, and sustainability.

The Students (chapter/forum) Associations such as IEEE, ISTE, Cultural Committee, Grievance Cell, Anti-ragging Committee, Sports Committee, NSS, YRC, NCC, etc. have student representatives to create proactive pupils.

## **Mechanism/ Norms and Procedure for Democratic/ Good Governance**

### **Service Rules:**

Service rules are prepared and approved by the Governing Council. The procedure of requirements, promotion policy, leave rules, etc. is explained in the service rules. The same is disseminated to all the faculty and staff. Printed books are made available with all the HODs and soft copy is made available on the institute website. Any changes made to the service rule are made known through circulars.

Service Rule Link: <https://sode-edu.in/uncategorized/service-rule/>

### **Policies:**

The institute has well-defined rules, policies and procedures for the students and staff. Based on the need, amendments are made to the policies and procedures with prior information to the students and staff. The recruitment and promotional policies are also clearly defined. Following are the rules, procedures and policies of the institute.

### Published rules:

Rules	Applicable to	Publication and awareness	Year of Publication
University Rules	Students and staff	Published on the University website. Every student and faculty has access to the handbook published by VTU.	2002, amended from time to time with information on the university website
Institute Rules	Students and staff	Published on the website.	2010, amended from time to time with information on the university website
Service Rules	Faculty & Staff Members	Prepared by the institute and a copy of the same is available in every department and website	2010, amended from time to time. A copy is available with the H.O.D's for the reference of faculty/ staff members.
Library Rules	Students and staff	Published on the website.	2010, amended from time to time and displayed in the library
Regulations for Hostels	Hostel students	Published on the website and hostel notice boards	2010, amended and given when joining the hostel, published in the hostel notice board
Rules for Internet access	Staff and Students	Published on the website and student notice board	2016, amended from time to time.
Bus Transport Rules	Faculty & staff using transport facility	Published on the website and student notice board	2012, Amended from time to time

### General Policies:

- Conduct, valuation, and documentation of internal examinations are organized by the Dean (Academics).
- Norms are established for student etiquette, behavior, and campus/hostel discipline.
- Appointment of staff is done by the Selection Committee, after ascertaining the qualifications, interview, and demonstration lectures.
- Financial/Administrative issues are routed through proper channels (HOD & Sections Heads) for approval by the Principal.
- The principal has full autonomy over academics, finance and implementation of various policies and procedures
- The HOD has autonomy over departmental matters and reports to the Principal.
- Discussion on Inter-departmental/Institute matters takes place in the Institute Council.
- All faculty allocations are approved by the Governing Council and all appointments are ratified by the Governing Council.
- Appointments are instituted only after due advertisement, interview, and demonstration to ensure fairness and transparency in the selection process.
- The role of the Principal in financial, administrative, and academic matters are well-defined.
- The posts of Vice Principal, Dean (Academics), and Dean (QA) are created to ensure autonomy and administrative ease. The Vice Principal is responsible for the overall administration in the absence of the Principal. In addition, the Vice Principal is responsible for promoting research, publication, incubation, and start-ups in the institute. Similarly, the Dean (Academics) will take care of all academic-related matters and the Dean (QA) is responsible for the quality assurance and accreditation.
- There is a periodic revision in pay scale/allowances and the same is to be approved by the Governing Council.
- The designation and promotion of faculty is strictly as per AICTE norms, and the institute has a promotion policy as well (published in the service rule)
- Depending on the performance appraisal, the staffs employed under training is absorbed into probation and permanent employment, The period of training/probation may be extended, if necessary, and promotions are according to AICTE regulations.
- The Institute has implemented a Performance Based Appraisal System (PBAS) for assessing the performance of the faculty and the promotion of the faculty/staff member is based on his/her performance and not by right. Similarly, incentives are sanctioned for good performers based on his/her performance/contribution.
- The Institute extends support to any faculty member pursuing a doctoral degree



## Transparency in financial functions:

The Governing Council has authorized the Principal of the institute to deal with the financial aspects. The budget is prepared by each department before the commencement of each financial year, and the same is discussed in the Governing Council (GC) before giving its approval. The investment in infrastructure and facilities and the purchase of equipment and services for various departments are placed before the GC. This Committee decides on investment in infrastructure and facilities. The Principal will discuss and decide the various requirements of the institute and place the same before the Secretary for approval. Approval by the secretary for all major purchases, and investments is mandatory.

**Payment of Salary and Mandatory Payments:** The salary is paid on the 5th day of every month and it is approved by the Secretary. All mandatory payments such as Provident Fund, Income Tax, ESI contribution..etc shall be paid on or before the 15<sup>th</sup> of every month.

**Deputation for research/post-doctorate/FDPs/Workshops:** The faculty member shall submit a formal request for any of the career advancement schemes to the respective HOD. Based on the recommendation by the HOD, the Principal will approve the requests. Permission from the Secretary is required for deputing faculty member(s) for which the expenses are more than 15,000 per faculty.

**Financial power to the HODs:** The Heads of various departments are permitted to spend Rs. 15,000 on simple equipment/facilities/books. etc required for the classes/laboratories.

## Transparency in academic functions:

- The academic rules and regulations of the Institute are published on the Institute's website. A copy of the hostel rules and regulations is given to each student at the time of admission and the same is displayed on the hostel notice board
- Any changes to the rules and regulations are intimated to the staff and students through circulars displayed on notice boards and very important information is read out in the classrooms
- The Institute strictly follows the rules and regulations of the University, which are available on the University website
- The student's attendance in each subject, marks scored on the test, and end-semester examination marks and grades are displayed on the notice board and also shared with the parents from time to time.
- The students are permitted to go through their assessment books and inform them of any discrepancies to the concerned teacher. If it is disregarded by the faculty, they can approach the HOD and the Principal

## Transparency in administration and auxiliary functions:

- All administrative decisions are taken by the GC of the institute, and administrative decisions related to the functioning of the institute are communicated to the HODs and section heads
- Administrative decisions related to staff members are communicated to them during general staff meetings, which are held twice a semester
- Changes in pay scale and allowance patterns are declared in general staff meetings and are strictly followed by the Management
- Service registers are maintained for each faculty member and a copy of the letter issued to a staff member is kept in an individual file, which is maintained by the HR department
- The audited balance sheet of the Institute is available on its website
- The admission policies are made clear on the website and are also displayed at the entrance of the administrative block
- The Institute has provided email facilities to all faculty, staff, and students. The concerned authorities will share administration information through e-mail if the need arises

## Statutory Committee/Cell

The following committees/cells are formed for the support of staff and students.

- Institutional Grievance Redressal Cell : <https://sode-edu.in/associations/grievance-redressal-cell/>
- Anti Ragging Committee & Squad : <https://sode-edu.in/associations/anti-ragging-committee/>
- Online Grievance Redressal Mechanism : <https://sode-edu.in/grievance-form/>
- College Internal Compliance Committee: <https://sode-edu.in/associations/cicc/>
- SC/ST/OBC Cell : <https://sode-edu.in/associations/sc-st-obc-cell/>
- Internal Quality Assurance Cell: <https://sode-edu.in/associations/quality-assurance-cell/>



## Student Feedback on Institutional Governance/ Faculty Performance:

The institute has adopted a well-organized feedback collection process through the online system using MIS. The students do not reveal their identity in the feedback process. The Dean (Academics) initiates and concludes the feedback collection through his office. The feedback is collected from the student at the end of the semester. All the comments written by the students are shared with the faculty members. This will help the faculty members to understand their strengths and weaknesses. The following three types of feedback are used to enhance the teaching-learning process at the end of every semester.

### Feedback process at SMVITM

Feedback type	Frequency	Feedback collected from	Mode	Purpose
Feedback on the teaching-learning process	Twice in a semester	All students	Online through MIS	To improve TLP
Course end survey	Once a semester	All students	Online through Google form	To improve TLP and CO assessment
Graduate survey	Once in a year	Final year students	Online through Google form	To improve TLP and PO assessment
Student Satisfaction survey	Once in a year	First, Second and Third-year students	Online through Google form	To improve TLP
Feedback on facility	Once in a year	Second and Third-year students	Online through Google form	To improve the institute's facility
Alumni survey	Once in a year	Institute Alumni	Online through Google form	To improve TLP and PEO assessment
Curriculum feedback	Once in a year	Faculty, Students, Alumni, Parents and Employer	Offline	To improve TLP and include value-added courses

**Feedback on the teaching-learning process:** This feedback is very essential to improve the quality of teaching-learning process and the feedback from the students will be taken twice in a semester, namely formative feedback and summative feedback. The **Formative feedback** is gathered in the middle of every semester, generally in the 8<sup>th</sup> week of the ongoing semester and the **Summative Feedback** is taken in the 12<sup>th</sup> week of every ongoing semester. These feedbacks are generally collected online using the institute MIS. The feedback contains 10 questions and the students shall rate on 5 point scale and the students. Once the feedback is collected from the students, the respective Head of the department will share the information with the individual faculty member along with his/her observations. Faculty members with less than 75% feedback will be informed to improve their performance and appreciation to the faculty with 90% above points.

**Course end survey:** The course end survey is collected from the students to know the attainment of the course outcomes. This survey is collected at the end of the semester through a Google form developed by the respective course coordinator. There are two sections in the course-end survey. The first section includes the course objectives, course content, various activities, and assessment conducted in the class and the second section is about the course outcomes. Both the sections are rated on four point scale. The response of the survey is used for the indirect assessment of the course outcomes.

**Student's assessment of faculty, system in place:** Online feedback with questions relevant to teaching-learning process is collected twice in a semester. Performance is measured in terms of the percentage of points obtained for each question. Concerned HOD and the individual faculty are made to know the marks scored in the feedback. HOD congratulates the best-performing faculty members and encourages others to perform better

## 6. Programmes offered:

### Name of the Programmes approved by AICTE:

- Master of Business Administration (MBA) in HR, Finance & Marketing
- BE in Artificial Intelligence & Data Science
- BE in Artificial Intelligence & Machine Learning

- BE in Civil Engineering (Progressive closure from 2024)
- BE in Computer Science & Engineering
- BE in Electronics & Communication Engineering
- BE in Mechanical Engineering

#### Names of the Programmes Accredited by NBA:

- BE in Computer Science & Engineering
- BE in Electronics & Communication Engineering

#### Status of the Accreditation of the courses:

Total Number of Courses eligible for accreditation: **03**

No. of courses Accredited: **02**

No. of courses for which applied for Accreditation: **01**

**Status of Accreditation:** Two Engineering programmes Accredited by NBA valid till 30 June 2027

NBA accreditation certificate link: <https://sode-edu.in/uncategorized/national-board-of-accreditation-nba/>

#### Admission details:

Course	Number of seats	Duration	Cut off rank for last three years		
			2024 Highest to lowest	2023 Highest to lowest	2022 Highest to lowest
Master of Business Administration (MBA)	60	2 years	22828 - 30535	43655-43006	---
BE in Artificial Intelligence & Data Sc.	60	4 Years	59257-261102	47361-80075	45488-45634
Artificial Intelligence & Machine Learning	60	4 Years	63738-93089	56179-80115	54781-55594
Civil Engineering	30	4 Years	closed	171534-179534	130509-170853
Computer Science & Engineering	180	4 Years	51794-107441	35131-39746	29245-29569
Electronics & Communication Engg	120	4 Years	88103-265294	78158-195051	74274-78218
Mechanical Engineering	30	4 Years	167473-251899	183196-183196	168593-168593

## 7. Faculty

### Profile of the Faculty Members

- [Master of Business Administration](https://sode-edu.in/sode-faculty/?dept_id=26876): [https://sode-edu.in/sode-faculty/?dept\\_id=26876](https://sode-edu.in/sode-faculty/?dept_id=26876)
- [Artificial Intelligence & Data Science](https://sode-edu.in/sode-faculty/?dept_id=23988): [https://sode-edu.in/sode-faculty/?dept\\_id=23988](https://sode-edu.in/sode-faculty/?dept_id=23988)
- [Artificial Intelligence & Machine Learning](https://sode-edu.in/sode-faculty/?dept_id=23992): [https://sode-edu.in/sode-faculty/?dept\\_id=23992](https://sode-edu.in/sode-faculty/?dept_id=23992)
- [Civil Engineering](https://sode-edu.in/sode-faculty/?dept_id=177): [https://sode-edu.in/sode-faculty/?dept\\_id=177](https://sode-edu.in/sode-faculty/?dept_id=177)
- [Computer Science and Engineering](https://sode-edu.in/sode-faculty/?dept_id=41): [https://sode-edu.in/sode-faculty/?dept\\_id=41](https://sode-edu.in/sode-faculty/?dept_id=41)
- [Electronics and Communication Engineering](https://sode-edu.in/sode-faculty/?dept_id=1058): [https://sode-edu.in/sode-faculty/?dept\\_id=1058](https://sode-edu.in/sode-faculty/?dept_id=1058)
- [Mechanical Engineering](https://sode-edu.in/sode-faculty/?dept_id=47): [https://sode-edu.in/sode-faculty/?dept\\_id=47](https://sode-edu.in/sode-faculty/?dept_id=47)
- [Chemistry](https://sode-edu.in/sode-faculty/?dept_id=16999): [https://sode-edu.in/sode-faculty/?dept\\_id=16999](https://sode-edu.in/sode-faculty/?dept_id=16999)
- [Physics](https://sode-edu.in/sode-faculty/?dept_id=17004): [https://sode-edu.in/sode-faculty/?dept\\_id=17004](https://sode-edu.in/sode-faculty/?dept_id=17004)
- [Mathematics](https://sode-edu.in/sode-faculty/?dept_id=17002): [https://sode-edu.in/sode-faculty/?dept\\_id=17002](https://sode-edu.in/sode-faculty/?dept_id=17002)

## FACULTY LIST

<b>Civil Engineering</b>		
<b>Sl.No</b>	<b>Name of the Faculty</b>	<b>Designation</b>
1	Dr. Deepika B V	Associate Professor & Head
2	Mr. Sunil Suresh Haldankar	Assistant Professor (Sr.)
3	Mr. Madhusoodhana Rao N	Assistant Professor (Sr.)
4	Mr. Roshan S Kotian	Assistant Professor (Sr.)
5	Mr. Jayarama Nayak	Assistant Professor(Sr.)
<b>Department of Computer Science &amp; Engineering</b>		
1	Dr. Ganesh Aithal	Professor & Vice Principal
2	Dr. Nagaraj Bhat	Professor & Dean (Academics)
3	Dr. Soumya J Bhat	Associate Professor & Head
4	Dr. Sadananda L	Associate Professor
5	Dr. Bharti Panjwani	Associate Professor
6	Mr. Chandrashekhar Rao Kuthyar	Assistant Professor (SG.)
7	Dr. Surajit Deb Barma	Assistant Professor (SG.)
8	Mr. Deepak Rao M	Assistant Professor (Sr.)
9	Ms. Sahana	Assistant Professor (Sr.)
10	Ms. Savitha A Shenoy	Assistant Professor (Sr.)
11	Mr. Raghavendra Ishwar Hegde	Assistant Professor (Sr.)
12	Ms. Rukmini Bhat	Assistant Professor (Sr.)
13	Ms. Yashaswini A S	Assistant Professor (Sr.)
14	Ms. Sowmya	Assistant Professor(Sr.)
15	Ms. Preethi M	Assistant Professor(Sr.)
16	Mr. Raghavendra G S	Assistant Professor(Sr.)
17	Ms. R. Soundharya	Assistant Professor
18	Ms. Chaithra Bhat M	Assistant Professor
19	Ms. Reshma	Assistant Professor
20	Ms. Mahadevi	Assistant Professor
21	Ms. Babitha Poojary	Assistant Professor
22	Ms. Pooja V	Assistant Professor
23	Ms. Ashritha K P	Assistant Professor
24	Mr. Prasad Pai	Professor of Practice

25	Ms. Vijetha	Visiting Professor
<b>E&amp;C Engg.</b>		
1	Dr. Sachin S Bhat	Professor
2	Mr. Lawrence D Almada	Professor
3	Dr. Shilpa Kamath S	Associate Professor
4	Mr. Shivaraj Hublikar	Associate Professor
5	Mr. Arun Upadhyaya	Associate Professor/I/C Head
6	Mr. Chetan R	Assistant Professor (SG)
7	Ms. Shashikala R.	Assistant Professor (Sr.)
8	Mr. Ganesh Srinivasa Shetty	Assistant Professor (Sr.)
9	Ms. Sowmya Bhat	Assistant Professor (Sr.)
10	Mr. Sachin Prabhu K	Assistant Professor (Sr.)
11	Ms. Yogeshwary B H	Assistant Professor (Sr.)
12	Ms. Vijayalatha Devadiga	Assistant Professor (Sr.)
13	Ms. Akshatha Rao L	Assistant Professor(Sr.)
14	Ms. Pavithra Poornima	Assistant Professor(Sr.)
15	Mr. Raghunatha	Assistant Professor(Sr.)
16	Ms. Vimitha A	Assistant Professor
17	Ms. Chandana	Assistant Professor
18	Ms. Jayashree M	Assistant Professor
19	Ms. Lahari Vaidya	Assistant Professor
20	Mr. Ajesh	Assistant Professor
21	Mr. Sandeepa Prabhu	Assistant Professor
22	Mr. Ganesh U G	Assistant Professor
23	Ms. Dhanya	Visiting Professor
24	Mr. Pranav Bhat	Visiting Professor
<b>Department of Mechanical Engineering</b>		
1	Prof. Dr. Thirumaleshwara Bhat	Professor & Principal
2	Dr. Sudarshan Rao K	Professor & Dean QA
3	Dr. Udaya Prasanna H	Professor on contract
4	Dr. Raja Yateesh Yadav	Associate Professor & Head
5	Dr. Madhukara Nayak	Assistant Professor (SG)
6	Dr. Manjunath S	Assistant Professor (SG)
7	Dr. Bharath K Bhat	Assistant Professor (SG)
8	Mr. Adithya Kudva S	Assistant Professor (SG)

9	Mr. Sudhir	Assistant Professor (SG)
10	Mr. Mallya Ananth Mohan	Assistant Professor (SG)
11	Mr. Ravinarayan Rao	Assistant Professor (Sr.)
12	Mr. Karthik V	Assistant Professor (Sr.)
13	Mr. Hithesh Mendon	Assistant Professor
<b>Department of Chemistry</b>		
1	Dr. Subbulakshmi N.Karanth	Associate Professor & Head
2	Dr. C K Manjunath	Associate Professor
3	Dr. Ravi Prabha K.	Assistant Professor (SG.)
4	Ms. Swathi	Assistant Professor
<b>Department of Mathematics</b>		
1	Dr. Lolita Priya Castelino	Associate Professor & Head
2	Dr. Renita Sharon Monis	Assistant Professor (SG.)
3	Ms. Bhagyalakshmi Navada	Assistant Professor (Sr.)
4	Ms. Nisha Reena Nazareth	Assistant Professor(Sr.)
5	Ms. Kavyalaxmi	Assistant Professor(Sr.)
6	Ms. Reshma Nayak	Assistant Professor
7	Ms. Sthuthi	Assistant Professor
<b>Department of Physics</b>		
1	Dr. Ravindra H J	Professor & Head
2	Dr. Sandhya	Assistant Professor (Sr.)
3	Ms. UshaParvathi	Assistant Professor(Sr.)
4	Ms. Rekha	Assistant Professor
<b>Department of AI-DS</b>		
1	Mr. Nagaraja Rao	Associate Professor & Head
2	Dr. Ranjan Kumar H S	Associate Professor
3	Mr. Rajesh Nayak	Associate Professor
4	Mr. Hariharan R L	Associate Professor
5	Ms. Vandana U	Assistant Professor
6	Mr. Balachandra R Jogi	Assistant Professor
7	Mr. Sarvesh S Rao	Assistant Professor
8	Ms. Shabana S	Assistant Professor
<b>Department of AI-ML</b>		
1	Dr. Mamatha I	Associate Professor & Head
2	Dr. Rashmi Samanth	Assistant Professor (SG.)

3	Dr. Vighnesh Shenoy	Assistant Professor(SG.)
4	Dr. Ganesha Prasad	Assistant Professor(SG.)
5	Dr. Shrivathsa T V	Assistant Professor(SG.)
6	Ms. Megha Rani	Assistant Professor(Sr.)
7	Ms. Ashwini K	Assistant Professor
8	Ms. Mamatha	Assistant Professor
<b>Department of MBA</b>		
1	Dr. Suraj Francis Norohna	Professor & Director
2	Dr. K Abhaya Kumar	Associate Professor
3	Mr. Varun K	Assistant Professor(Sr)
4	Mr. Steevan Robert Tellis	Assistant Professor(Sr)
5	Ms. Aurin Madtha	Assistant Professor
6*	Dr. Komal Jenifer Dsouza	Visiting Professor
7*	Dr. Neha Lakhotia Sarda	Visiting Professor

\*Faculty member on alternative semester

STUDENT-FACULTY RATIO (SFR) FOR THE YEAR 2024-25

PROGRAM	SANCTIONED STRENGTH	TOTAL NUMBER OF FACULTY	SFR
UG	1890	98	1:19.3
PG	120	6	1:20

## Profile of the Principal



Name	Dr. Thirumaleshwara Bhat
Date of Birth	04/11/1965
Unique ID	1-2914507333
Educational Qualification	B.E, M Tech., Ph D.,
Work Experience	
Teaching	33 years
Research	16 years (including teaching)
Area of Specialization	Tribology of Composite Materials
Courses taught at Under Graduate	Machine Design, Operations Research, Mechanics of Machines
Research Guidance	
No. of research scholars	
• Master (Completed)	3
• Ph. D (Completed / ongoing)	8
No. of papers published	National journals: 02 International Journals: 20 National Conference: 14 International Conference: 6
Research publications	42

## 8. Fee Structure

Total College Fee	Admission through KEA (Govt seats)	Rs. 115206 (All branches)
	Management quota seats	CE and ME- 90610 ECE – 1,50,610 AI & DS and AI & ML– 2,30,610 CSE- Rs. 2,60,610
	COMEDK seats	Rs. 2,16,721 (All branches)
Schedule for payment of fee	Soon after the allotment of the seat for First-year students and Before reopening of Odd sem. from II year onwards	

\*fee includes the University Registration Fee

## No. of Fee waivers granted with amount and name of students admitted under AICTE supernumerary quota during 2024-25

Sl. No	Name of the student	CET rank	Branch	Fee
1	SAKSHI	32131	AI&DS	31,360.00
2	VAISHNAVI K AMIN	22561	AI&DS	31,360.00
3	ZEHA AYESHA	31536	AI&DS	31,360.00
4	APEKSHA	24654	AI&ML	31,360.00



5	KEERTHAN KRISHNA SHERIGAR	15187	AI&ML	31,360.00
6	Kundar kashish chandra	52042	AI&ML	31,360.00
7	NISHA	30471	CSE	31,360.00
8	PRATHIKSHA P SHETTY	34511	CSE	31,360.00
9	RAMYA	13391	CSE	31,360.00
10	SAFA	31768	CSE	31,360.00
11	SATHWIK G KAMATH	23454	CSE	31,360.00
12	SHARANYA THANTRY	13139	CSE	31,360.00
13	SINDHU	33787	CSE	31,360.00
14	SWASTHIK ACHARYA	17299	CSE	31,360.00
15	UTHSAV N SHETTY	36644	CSE	31,360.00
16	ANANYA M MENDON	54701	ECE	31,360.00
17	B AKHILESH SHETTY	62346	ECE	31,360.00
18	CHAITHRA PAI	62217	ECE	31,360.00
19	PAVAN PRABHU	67629	ECE	31,360.00
20	PREETHA J ACHARYA	17146	ECE	31,360.00
21	VINUTHA	69641	ECE	31,360.00
22	ADISHA NAIK	110266	Mech	31,360.00

**The number of scholarships offered by the institution and its supporters, duration, and amount (2023-24) are as follows:**

Sl. No	SCHOLARSHIP SPONSORS	NO. OF STUDENTS	SANCTIONED AMOUNT
1	Scholarship from Sode Vadiraja Mutt Education Trust	62	1153443
2	Proficiency Prizes From The Institute	15	15000
3	Gowthama Foundation	9	54000
4	Madhwa Vadiraja Prashasthi -Best Outgoing (Boy) Award	1	10000
5	Madhwa Vadiraja Prashasthi -Best Outgoing (Girl) Award	1	10000
6	Vidya Poshak Scholarship (Yakshagaana Kalaranga)	25	485000
7	Sitaram Jindal Foundation	47	674100
8	Ramakrishna Mission Ashrama	4	24000
9	Smt Tonse Padmavathiamma & Sri Subanna P Udupi Memorial Trust	16	160000
10	Hayavadana Prashasthi 2023-24 Instituted by Dr. Madhusudhan Atre Bangalore	1	10000
11	Hayavadana Prashasthi 2023-24 Instituted by Mr. Chinnayya Accenture in Australia	1	10000
12	Reliance Foundation Undergraduate Scholarships	2	100000
13	India Bulls Foundation	1	90000
14	JSW Foundation	10	500000

15	U GO SCHOLARSHIP	1	50000
16	PHANEESH KUMAR	1	25000
17	IEEE SCHOLARSHIP	5	25000
18	SANTHOOR SCHOLARSHIP	1	30000
19	SALIGRAMA GURU NARASIMHA TREMPLE SCHOLARSHIP	23	2398095
20	NACH SCHOLRAHIP TO NEHA 4MW23AD023, 4MW23CS046	2	145810
21	SOUTH KANARA DRAVIDA BRAHMIN ASSOCIATION	1	25000
22	BUDDY4STUDY SCHOLARSHIP FOR RURAL STUDENTS - SINCHANA SHERIGAR 22CS153	1	45000
23	AMMEMBAL SUBBA RAO PAI MEMORIAL FUND SCHOLARSHIP	1	25000
<b>Total Scholarship</b>		<b>231</b>	<b>6064448</b>

## 9. Admission

No. of Seats sanctioned with the year of approval: <https://sode-edu.in/aicte-approval-letters/>

Number of students admitted under various categories in last three years

Year	Sanctioned Intake*	Government seats**	Management Admissions	Total
2024-25	450	203	225	428
2023-24	480	208	238	446
2022-23	480	204	232	436

\*excluding 5% seats of SNQ \*\*including 5% SNQ

Number of applications received during last three years for admission under Management quota and number of students admitted

Year	Applications received	No. of students admitted
2024-25	382	225
2023-24	332	238
2022-23	285	232

## 10. Admission Procedure

Following are the guidelines for the candidates seeking admission at SMVITM. Admission to First Year Program: Admission is granted in accordance with the rules and regulations enforced by the All India Council for Technical Education (AICTE), New Delhi and Govt. of Karnataka (GOK) from time to time.

### The eligibility to get admission to engineering programs:

The candidate should have passed in 2nd PUC / 12th Std. with English as one of the languages and obtained a minimum of 45% marks in aggregate in Physics and Mathematics along with Chemistry / Biotechnology / Biology / Electronics / Computer as the third subject. For SC, ST, Cat-1, 2A, 2B, 3A & 3B category candidates of Karnataka, the minimum percentage of marks to get the engineering admission is 40%.

Aspiring students shall take up the Common Entrance Test (CET) conducted by the Karnataka Examinations Authority (KEA) and get admitted through the KEA counseling process. The details about the Common Entrance Test and KEA counseling process will be notified by the GOK in all leading newspapers. A few management seats are also available in the institution. The students seeking management seats shall meet the college authorities.

### Lateral Admission to Second Year Program for Diploma/B.Sc. candidates:

The students who wish to join the second-year program through lateral entry shall follow the KEA norms for

lateral admissions. The Successful Diploma / B. Sc students are eligible to get admitted to the second year of Engineering through Lateral Admission. Such candidates should have passed a three-year diploma course from an AICTE-approved institution with a minimum of 45% marks in aggregate in the appropriate branch of Engineering / Technology (40% marks for SC, ST, Cat-1, 2A, 2B, 3A & 3B category candidates).

OR

Passed B. Sc Degree from a UGC recognized University with a minimum of 45% marks in aggregate (40% marks for SC, ST, Cat-1, 2A, 2B, 3A & 3B category candidates of Karnataka) and passed 12th Std. with Mathematics as one of the subjects.

## Criteria and weightage for admission

### Submission of Application form:

Candidates who wish to join the Institute can visit the institution and submit the application form. The application form costs Rs. 2000/- . The application form can also be obtained through post by paying an amount of Rs 2100.00 (Rs 2000 + Rs 100 towards postal expenses) by a DD (in favor of "Shri Madhwa Vadiraja Institute of Technology & Management" Payable at Udupi.) or through NEFT and provide us the Address and Mobile Number through an email to [info@sode-edu.in](mailto:info@sode-edu.in).

### Bank details for making payment

Bank Name: HDFC Bank

Branch: Shirva

A/c Type: CURRENT

A/c Name: SHRI MADHWA VADIRAJA INSTITUTE OF TECHNOLOGY & MANAGEMENT

A/c number: 50100303818541

IFSC: HDFC0009540

### Government seat allocation:

Students seeking Government seats shall attend the Common Entrance Test conducted by the Karnataka Examination Authority. For more details about the admission, the candidate is advised to visit the website [www.kea.kar.nic.in](http://www.kea.kar.nic.in)

### COMEDK seat allocation:

The institute offers 30% of the UG program seats in each program through COMEDK. The student seeking a COMEDK seat shall attend the Common Entrance Test conducted by the COMEDK. For more details about the admission, the candidate is advised to visit the website [www.comedk.org](http://www.comedk.org)

### Management seat allocation:

The institute admits 25% of the UG seats in each program through management quota based on the merit list prepared after the institute level entrance test.

- Date of inviting application from : 23 April 2024
- Last date for the submission of application form : 10 May 2024
- Entrance test date (offline) : 14 May 2024
- Announcement of merit list (institute website) : 16 May 2024
- Last date for admission : 31 October 2024
- Last date for closing the admission : 31 October 2024

## 11. List of applicants (2024-25):

Sl. No	Name of the candidate	Program	% marks in qualifying exam
1	Adithya S Poojary	AI/DS	69%
2	AISHA	AI/DS	70.66%
3	Ananya Nayak	AI/DS	74.50%
4	Ananya Raikar	AI/DS	76.66%
5	Ankitha Prasanna Nayak	AI/DS	75.30%

6	Aren Vowin Dsouza	AI/DS	66.70%
7	Arpitha Tantry	AI/DS	85.66%
8	Arwin Jackson Maben	AI/DS	72%
9	Ayesha	AI/DS	74.33%
10	B. G Prarthana Hebbar	AI/DS	70.33%
11	Bharathraj A Nayak	AI/DS	89%
12	Boomika	AI/DS	82.83%
13	Danush	AI/DS	70%
14	Dishan	AI/DS	76%
15	Harshitha	AI/DS	77.66%
16	Kundar Kashish	AI/DS	87.60%
17	Mainuddin	AI/DS	68%
18	Manish Thingalaya	AI/DS	69.33%
19	Mohammed Afreed	AI/DS	68.66%
20	Mohammed Awad Tonse	AI/DS	64.67
21	Mohammed Rafique	AI/DS	78.66%
22	Mohammed Suhan	AI/DS	65.60%
23	Monisha Devadiga	AI/DS	61%
24	N Karthik	AI/DS	80.10%
25	Nireeksha	AI/DS	80%
26	Nisha	AI/DS	81%
27	Nishan D Shetty	AI/DS	77%
28	Nishanth Shetty	AI/DS	65.33%
29	Padmashree	AI/DS	85%
30	Panchami	AI/DS	89.66
31	Pavan Bhat	AI/DS	80%
32	Pavan S Poojary	AI/DS	53.67%
33	Poojari Sannidhi Suresh	AI/DS	78.60%
34	Prabhanjan	AI/DS	68%
35	Prajwal	AI/DS	61%
36	Prajwal	AI/DS	60.33%
37	prateeksha	AI/DS	69%
38	Pratheeksha Nayak	AI/DS	89.33%
39	Prathik	AI/DS	85%
40	Preeth shetty	AI/DS	64.66%
41	Rajath	AI/DS	74%
42	Rakshana	AI/DS	76%
43	Rakshitha	AI/DS	87.67%
44	Reshma	AI/DS	82.66%
45	Rishan Francis Menezes	AI/DS	69%
46	Rithesh R	AI/DS	65%
47	Ruthika	AI/DS	69%
48	Sanjan Shetty	AI/DS	69%
49	Sanvi Shettigar	AI/DS	83.33%
50	Shamili	AI/DS	88%
51	Shetty Raksha Uday	AI/DS	91.66%
52	Shravan	AI/DS	80.66%
53	Shreya Ravikumar	AI/DS	68.66%
54	Shri Raksha Bhat	AI/DS	80.33%
55	Suchainya	AI/DS	68.33
56	Sudeep S Prabhu	AI/DS	48%
57	Suhaim Shabbir	AI/DS	72%
58	Suhanya	AI/DS	70.33%

59	Sunil	AI/DS	65%
60	Swarnashree	AI/DS	78.66%
61	Trisha	AI/DS	74.33%
62	Vandana V devadiga	AI/DS	70%
63	Vighnesh	AI/DS	73.00%
64	Vignesh	AI/DS	77%
65	Zeenath Ziyen (34,390 extra paid)	AI/DS	62%
66	zeenathziyan	AI/DS	62%
67	Abhijith	AI/ML	77%
68	Advith Gouda	AI/ML	53.66%
69	Anvith S Sherigar	AI/ML	71.33%
70	Aviratha R Prabhu	AI/ML	60%
71	Dhanraj L Poojary	AI/ML	70.60%
72	Dhanya	AI/ML	73.60%
73	H Adithyasuma Shetty	AI/ML	50%
74	Harshith	AI/ML	57.30%
75	Kishan J	AI/ML	66.33%
76	Maneesh Shetty	AI/ML	80.66%
77	Manmitha	AI/ML	61.66%
78	Mayur	AI/ML	73.66%
79	Mohammed Simak	AI/ML	78%
80	Mohammed Asad	AI/ML	58%
81	Mourya Raj H N	AI/ML	73.66%
82	Navya	AI/ML	69.33%
83	Pavan Nayak	AI/ML	80%
84	Pavithra Nayak	AI/ML	76.67%
85	Praneeth Kumar	AI/ML	63.66%
86	Rajath H S	AI/ML	62.33%
87	Rakesh Hegde	AI/ML	59.60%
88	Rithin	AI/ML	65.66%
89	Sachin	AI/ML	58.66%
90	Samarth R Shetty	AI/ML	50.60%
91	Sanika	AI/ML	52%
92	Sathwik	AI/ML	58.66%
93	Shamitha Hebbar	AI/ML	60%
94	Sharath	AI/ML	60.32%
95	Shetty Rashik Rathnakar	AI/ML	62.66%
96	Shranya	AI/ML	58.66%
97	Shravya	AI/ML	57.60%
98	Shreesh A Devadiga	AI/ML	59.75%
99	Shrisha	AI/ML	56.33%
100	Shriya Devadiga	AI/ML	94%
101	Sinchana	AI/ML	68%
102	Spoorthi	AI/ML	79.67%
103	Sudarshan	AI/ML	60%
104	Sujeet Ganesh Shet	AI/ML	59.33%
105	Supraja S M	AI/ML	80.66
106	Tejas	AI/ML	65.66%
107	Vamsh	AI/ML	55.33%
108	Vandana	AI/ML	89.67
109	Vignesh Adiga	AI/ML	74%
110	Vihaan S	AI/ML	64.33%

111	Dhikshith Aithal KG	CSE	76%
112	Maanya S Acharya	CSE	84%
113	Preetha J Acharya	CSE	94.66%
114	Shreya Shetty	CSE	92.30%
115	Aarya	CSE	92%
116	Abdul nasir	CSE	55%
117	Abhishek	CSE	67.33%
118	Adithi S Nayak	CSE	89%
119	Adithya V Acharya	CSE	84.33 %
120	Akankaha G Shetty	CSE	76%
121	Akash Narasimha Nayak	CSE	84.30%
122	Ananaya Y Bangera	CSE	79.66%
123	Ananya	CSE	76%
124	Ananya	CSE	86.00%
125	Ananya	CSE	72.66%
126	Ananya Nayak	CSE	74.66
127	Ananya Y Bangera	CSE	79.66%
128	Ankith	CSE	84.33%
129	Anvesh N Acharya	CSE	72.66%
130	Aron Owen D'Souza	CSE	64%
131	Arya Asween Desai	CSE	93%
132	Aryan G	CSE	88%
133	Ashmi Shetty	CSE	72%
134	Ashraya Shetty	CSE	88%
135	Ayishathul Mufida	CSE	75.66
136	B . Ranjan Pai	CSE	91.60%
137	Chandana	CSE	87.33%
138	Chandrakala	CSE	55.33%
139	Cleonie	CSE	60%
140	Darren Dsouza	CSE	82.66
141	Deekshith	CSE	76%
142	Deekshith	CSE	64%
143	Devadiga Suhas Suresh	CSE	54.66
144	Dhaatri N Bhat	CSE	56%
145	Dhiraj	CSE	83%
146	Dhrethi	CSE	85.33%
147	Disha	CSE	51.33%
148	Disha	CSE	76.33%
149	Disha D Poojary	CSE	98.33%
150	Disha S Poojary	CSE	83.33%
151	Divya	CSE	91%
152	Drushya K Shetty	CSE	58%
153	Esha S M	CSE	81.30%
154	Ganapathi Mallya	CSE	82%
155	Gautham G Prabhu	CSE	53%
156	Gowrish M Sheregar	CSE	74.66
157	Gracelda Sweedal Serrao	CSE	69.66%
158	Harsha S Rao	CSE	82%
159	Harshitha Shettigar	CSE	93%
160	Himani	CSE	64.67%
161	Inchara	CSE	81%
162	Jeethan Welroy Fernandes	CSE	88.66%
163	Karthik B Nayak	CSE	56.66%

164	Karthik Sherigar	CSE	71%
165	Kaushik	CSE	81%
166	Keerthana	CSE	94.33%
167	Keerthi.R.Shetty	CSE	77%
168	Khushi	CSE	82%
169	Koushtubha	CSE	81.66%
170	Krithi	CSE	86.66%
171	krithika	CSE	65%
172	Kushi	CSE	87.83%
173	Lavanya Shankar Moger	CSE	79.66%
174	Laxmeesh V	CSE	85.33%
175	Likhita	CSE	83%
176	Lipika Nayak	CSE	87.60%
177	Maanya	CSE	89%
178	Maanya B C	CSE	87%
179	Madhura	CSE	87%
180	Manasa R kulal	CSE	76%
181	Manasa R Kulal	CSE	76.66%
182	Manjushree	CSE	88.33%
183	Manoj Kumar	CSE	87%
184	Manu	CSE	73.66%
185	Mauresh M Naik	CSE	67%
186	Meghana	CSE	77.33%
187	Mohammed Suhaym	CSE	56.66%
188	Moksha Jeetendra Murudeshwara	CSE	73.67%
189	Naman	CSE	55%
190	Navya	CSE	72.33
191	Neha	CSE	69.66%
192	Nikhil Naik	CSE	54.33%
193	Niranjan	CSE	68.66%
194	Nirmitha K Nagaraj	CSE	91%
195	Nisha M B	CSE	81%
196	Nishmitha	CSE	87.33
197	Panchami V Devadiga	CSE	89.66%
198	Pavan	CSE	89.50%
199	Poojashree	CSE	65.66%
200	Poorvi Sunil Dev	CSE	74%
201	Poorvika	CSE	87%
202	Prajna	CSE	90%
203	Prajwal	CSE	73%
204	Prajwal	CSE	81%
205	Prakrathi	CSE	79%
206	Pranav P K	CSE	97%
207	Prateeksha	CSE	92%
208	Pratham G Kumar	CSE	84
209	Prathvi Devadiga	CSE	86%
210	Prathweesh	CSE	67.66%
211	Preethish D Souza	CSE	83.67%
212	Puneeth	CSE	87%
213	Rafiya Fathima	CSE	80%
214	Ramith	CSE	80.33%
215	Ramyra Prabhu	CSE	84%



216	Rashi shetty	CSE	62%
217	Rijesh S	CSE	52.66%
218	Roshan	CSE	90%
219	Rupak	CSE	79.33
220	Sagar H Poojary	CSE	64.66%
221	Sahana	CSE	79.60%
222	Sakshi	CSE	75%
223	Sameeksha Bekal	CSE	77.50%
224	Sameer Acharya	CSE	88.67%
225	Samiksha	CSE	75.67%
226	Samruddi	CSE	84.33%
227	Samruth Jonath	CSE	92.3
228	Sanchitha	CSE	91.33
229	Sanya	CSE	80.66%
230	Sargam	CSE	74.33%
231	Sarthak	CSE	90%
232	Shakshi	CSE	79%
233	Shamanth K	CSE	92.33
234	Sharadhi G Poojary	CSE	86.33%
235	Sharan	CSE	61%
236	Sharath	CSE	55%
237	Shashank Kamath	CSE	87.66%
238	Sheik Mohammed	CSE	82.33%
239	Shiva Prasad	CSE	87%
240	Shradda Nayak	CSE	92%
241	Shraddha	CSE	85%
242	Shravan	CSE	79.67%
243	Shravya	CSE	57.66%
244	Shraya	CSE	85%
245	Shree Rakshitha Rao	CSE	63%
246	Shreedhanya G Maddodi	CSE	79.33%
247	Shreehari Shenoy R	CSE	51.66%
248	Shreelakshmi	CSE	92%
249	Shreepriya P Acharay	CSE	52.66
250	Shreeshesha G A	CSE	56%
251	Shreya Prabhu	CSE	69 %
252	Shreyas B Palan	CSE	70.33%
253	Shreyas Satish Bhat	CSE	83.60%
254	Shrikari R bhat	CSE	79.67%
255	Shrinidhi	CSE	81.66%
256	Shristi Nayak	CSE	93%
257	Shruthika	CSE	69%
258	Sinchana J	CSE	73.30%
259	Soujanya	CSE	94.66
260	Spoorthi	CSE	79.66%
261	Suhas	CSE	58%
262	Sujith	CSE	74.33%
263	Sunil Bhat	CSE	64.67
264	Suraj R	CSE	60.33%
265	Sushanth	CSE	92%
266	Sushanth	CSE	78.66%
267	Tasmiya	CSE	85%
268	Thanmayee	CSE	77.60%

269	Thejas B K	CSE	78%
270	Thrishna D Poojary	CSE	89.66%
271	Trishna	CSE	91%
272	Vandana	CSE	89%
273	Vidyashree	CSE	83%
274	Vikash	CSE	88%
275	Vinitha	CSE	72%
276	Vishnu Prasad	CSE	60%
277	Yash	CSE	68.33%
278	Yashasvi	CSE	94%
279	Yashaswini	CSE	79.60%
280	Zainaba	CSE	81%
281	K Raksha Nayak	ECE	79.33%
282	Vishnu Naik	ECE	85%
283	Abhinandan A Walvekar	ECE	84.66%
284	Adithi S Salian	ECE	59.33%
285	Adithya V Acharya	ECE	85%
286	Akash K Patkar	ECE	60.33%
287	Akshay	ECE	77.67%
288	Arlene Fernandes	ECE	94.33 %
289	Ashrith	ECE	74.33%
290	Bharath	ECE	73.66%
291	Bhavya S M	ECE	68%
292	Chandra Kanth	ECE	86%
293	Chandrika	ECE	86.33
294	Chetan Nayak	ECE	68%
295	Chetan Suresh karkera	ECE	93.83%
296	Deeksha	ECE	82.66%
297	Denial	ECE	83.33%
298	Dishan	ECE	71.33%
299	Fiza	ECE	81.33
300	Gagan	ECE	73.33%
301	Ganesh Nayak	ECE	76%
302	Gowrav	ECE	82%
303	Gururaj Poojary	ECE	68%
304	Gururaja A Poojary	ECE	75%
305	Karthik A Acharya	ECE	73%
306	Krrish B Poojari	ECE	58.66%
307	Likhitha Nayak	ECE	76%
308	Manjushree	ECE	88.33%
309	Manohar	ECE	68
310	Manohar M	ECE	84.66%
311	Manu D Acharya	ECE	73.66%
312	Mast Shetty Tanmay Bhujanga	ECE	76%
313	Megha Raju Billava	ECE	92%
314	Mohammed Ifaz	ECE	65%
315	Muhammad Shanawaz	ECE	63%
316	Naveen S Devadiga	ECE	69.33%
317	Nidhi Naveen Shetty	ECE	55.33%
318	Niranjan Holla	ECE	68.66%
319	Pavithra Nayak	ECE	79.33
320	Poojary Gaurav Srinivas	EcE	71.66%
321	Pradeep Salonkar	ECE	83.66%

322	Prajna V Poojary	ECE	68.66%
323	Prateek	ECE	68.66
324	Pratham kundar	ECE	58.33%
325	Preeth shetty	ECE	73.50%
326	Prerana M Jogi	ECE	59.33%
327	Puneeth	ECE	80%
328	Rajani Tantry	ECE	79.33%
329	Rakshitha R Nayak	ECE	83.33
330	Rithesh Surendra Salian	ECE	56.67%
331	Rupak K Devadiga	ECE	79.3
332	Saanidhya	ECE	92.60%
333	Sachin	ECE	58.67%
334	Sachin	ECE	68.67%
335	Sakshi S Shetty	ECE	78.30%
336	Samaksh S Shetty	ECE	49.33%
337	Sameeksha	ECE	74.33%
338	Sameeksha	ECE	72.33%
339	Sanya	ECE	55.66
340	Shamanth	ECE	79.60%
341	Shravan Krishna	ECE	71%
342	Shreya U Shettigar	ECE	85.67
343	Shreyas U Shettigar	ECE	86%
344	Shrikavya	ECE	77%
345	Shushanth	ECE	86.33
346	Sinchana B	ECE	62.67%
347	Sinchara	ECE	79.33%
348	Sriprerana P Acharya	ECE	59.67%
349	Srivathsa S	ECE	63%
350	Sujay L Bhat	ECE	67%
351	Suman K Naik	ECE	71.33%
352	Swarnashree	ECE	78.66%
353	Vachan C Achari	ECE	85%
354	Vasantha Poojary	ECE	64.33%
355	Vighnesh	ECE	77%
356	Adarsh	Mech	66%
357	Adharsh	Mech	62%
358	Akshay Moolya	Mech	65%
359	Akshay Moolya	Mech	61.66%
360	Apeksha	Mech	95.30%
361	Arun Basavaras Vittappanavar	Mech	68%
362	Aryan	Mech	84%
363	Ashrith	Mech	77.33%
364	Athul	Mech	74%
365	Ganga	Mech	76%
366	Gouthami	Mech	94%
367	Karthik K	Mech	73.67%
368	Keerthan	Mech	95.33%
369	Manvith V Shetty	Mech	50%
370	Rajath	Mech	95.33%
371	Rakshith	Mech	68.33%
372	Raviteja R Kulal	Mech	69.66%
373	Sakshi	Mech	94%
374	Samith	Mech	62.67%

375	Sanith Kumar	Mech	52.33%
376	Sanuya Alkin Riza	Mech	94.66%
377	Sharan Acharya	Mech	61.67%
378	Suhan	Mech	94.60%
379	Sujith Salian	Mech	59%
380	Sukesh U Ganiga	Mech	73.33%
381	Sushan	Mech	95.30%
382	Vignesh	Mech	78.33

## 12. Results of Admission under Management Seats/Vacant Seats

### The management seat allotment details

Sl. No	Name of the candidate	Program	% marks in qualifying exam	Merit (Rank)
1	Abhishek	CSE	69%	233
2	Ananya	CSE	70.66%	183
3	Ananya Nayak	CSE	74.50%	161
4	Anvesh N Acharya	CSE	76.66%	184
5	Aron Owen D'Souza	CSE	75.30%	252
6	Chandrakala	CSE	66.70%	300
7	Cleonie	CSE	85.66%	275
8	Deekshith	CSE	72%	253
9	Devadiga Suhas Suresh	CSE	74.33%	301
10	Dhikshith Aithal KG	CSE	70.33%	153
11	Disha	CSE	89%	48
12	Disha	CSE	82.83%	154
13	Drushya K Shetty	CSE	70%	288
14	Gautham G Prabhu	CSE	76%	308
15	Gowrish M Sheregar	CSE	77.66%	163
16	Gracelda Sweedal Serrao	CSE	87.60%	204
17	Himani	CSE	68%	243
18	Karthik B Nayak	CSE	69.33%	293
19	Keerthi.R.Shetty	CSE	68.66%	142
20	Manasa R Kulal	CSE	64.67	143
21	Mauresh M Naik	CSE	78.66%	234
22	Meghana	CSE	65.60%	144
23	Moksha Jeetendra Murudeshwara	CSE	61%	175
24	Navya	CSE	80.10%	193
25	Neha	CSE	80%	205
26	Nikhil Naik	CSE	81%	306
27	Poorvi Sunil Dev	CSE	77%	177
28	Prathweesh	CSE	65.33%	228
29	Rijesh S	CSE	85%	309
30	Sagar H Poojary	CSE	89.66	250
31	Sakshi	CSE	80%	165

32	Sameeksha Bekal	CSE	53.67%	136
33	Samiksha	CSE	78.60%	160
34	Sargam	CSE	68%	180
35	Shree Rakshitha Rao	CSE	61%	259
36	Shreehari Shenoy R	CSE	60.33%	312
37	Shreeshesha G A	CSE	69%	297
38	Shreya Prabhu	CSE	89.33%	220
39	Sinchana J	CSE	85%	188
40	Sunil Bhat	CSE	64.66%	251
41	Suraj R	CSE	74%	280
42	Sushanth	CSE	76%	130
43	Thanmayee	CSE	77%	137
44	Thejas B K	CSE	53.66%	138
45	Vishnu Prasad	CSE	71.33%	281
46	Adithya S Poojary	AI/DS	60%	209
47	Manish Thingalaya	AI/DS	70.60%	210
48	Mohammed Afreed	AI/DS	73.60%	211
49	Mohammed Awad Tonse	AI/DS	50%	245
50	Mohammed Suhan	AI/DS	57.30%	238
51	Monisha Devadiga	AI/DS	66.33%	270
52	Nishanth Shetty	AI/DS	80.66%	247
53	Pavan S Poojary	AI/DS	61.66%	307
54	Prajwal	AI/DS	73.66%	276
55	Preeth shetty	AI/DS	78%	248
56	Rishan Francis Menezes	AI/DS	58%	217
57	Rithesh R	AI/DS	73.66%	249
58	Sanjan Shetty	AI/DS	69.33%	219
59	Sudeep S Prabhu	AI/DS	80%	318
60	Zeenath Ziyen (34,390 extra paid)	AI/DS	76.67%	268
61	Aviratha R Prabhu	AI/ML	63.66%	274
62	H Adithyasuma Shetty	AI/ML	62.33%	315
63	Kishan J	AI/ML	59.60%	237
64	Manmitha	AI/ML	65.66%	264
65	Rajath H S	AI/ML	58.66%	265
66	Rakesh Hegde	AI/ML	50.60%	277
67	Rithin	AI/ML	52%	240
68	Samarth R Shetty	AI/ML	58.66%	314
69	Shetty Rashik Rathnakar	AI/ML	60%	258
70	Shravya	AI/ML	60.32%	291
71	Shreesh A Devadiga	AI/ML	62.66%	278
72	Sujeet Ganesh Shet	AI/ML	58.66%	286
73	Tejas	AI/ML	57.60%	241
74	Vamsh	AI/ML	59.75%	305

75	Vihaan S	AI/ML	76%	255
76	Adithi S Salian	ECE	84%	282
77	Akash K Patkar	ECE	94.66%	273
78	Chetan Nayak	ECE	92.30%	224
79	Dishan	ECE	92%	199
80	Gagan	ECE	55%	185
81	Gururaj Poojary	ECE	67.33%	225
82	Karthik A Acharya	ECE	89%	186
83	Krrish B Poojari	ECE	84.33 %	283
84	Manohar	ECE	76%	227
85	Manu D Acharya	ECE	84.30%	173
86	Muhammad Shanawaz	ECE	79.66%	256
87	Naveen S Devadiga	ECE	76%	212
88	Nidhi Naveen Shetty	ECE	86.00%	303
89	Niranjan Holla	ECE	72.66%	215
90	Poojary Gaurav Srinivas	EcE	74.66	194
91	Prajna V Poojary	ECE	79.66%	216
92	Pratham kundar	ECE	84.33%	289
93	Prerana M Jogi	ECE	72.66%	284
94	Rithesh Surendra Salian	ECE	64%	295
95	Sachin	ECE	93%	285
96	Sachin	ECE	88%	218
97	Samaksh S Shetty	ECE	72%	317
98	Sameeksha	ECE	88%	195
99	Shravan Krishna	ECE	75.66	201
100	Sinchana B	ECE	91.60%	260
101	Sriprerana P Acharya	ECE	87.33%	279
102	Srivathsa S	ECE	55.33%	261
103	Sujay L Bhat	ECE	60%	235
104	Suman K Naik	ECE	82.66	202
105	Vasantha Poojary	ECE	76%	254
106	Adharsh	Mech	64%	262
107	Akshay Moolya	Mech	54.66	263
108	Arun Basavaras Vittappanavar	Mech	56%	222
109	Manvith V Shetty	Mech	83%	316
110	Samith	Mech	85.33%	257
111	Sanith Kumar	Mech	51.33%	311
112	Sharan Acharya	Mech	76.33%	267
113	Sujith Salian	Mech	98.33%	287

## The vacant seats are allotted to the following waitlisted candidates

Sl. No	Name of the candidate	Program	% marks in qualifying exam	Merit (Rank)
1	Ananya Y Bangera	CSE	83.33%	108
2	Arya Asween Desai	CSE	91%	9
3	Aryan G	CSE	58%	37
4	Ashraya Shetty	CSE	81.30%	38
5	B . Ranjan Pai	CSE	82%	12
6	Chandana	CSE	53%	47
7	Darren Dsouza	CSE	74.66	86
8	Dhrethi	CSE	69.66%	65
9	Disha S Poojary	CSE	82%	90
10	Ganapathi Mallya	CSE	93%	95
11	Harsha S Rao	CSE	64.67%	97
12	Jeethan Welroy Fernandes	CSE	81%	33
13	Keerthana	CSE	88.66%	6
14	Khushi	CSE	56.66%	98
15	Koushtubha	CSE	71%	99
16	Krithi	CSE	81%	48
17	Lavanya Shankar Moger	CSE	94.33%	109
18	Laxmeesh V	CSE	77%	66
19	Likhita	CSE	82%	91
20	Lipika Nayak	CSE	81.66%	41
21	Maanya	CSE	86.66%	34
22	Maanya B C	CSE	65%	49
23	Manoj Kumar	CSE	87.83%	51
24	Nirmitha K Nagaraj	CSE	79.66%	21
25	Nisha M B	CSE	85.33%	104
26	Nishmitha	CSE	83%	52
27	Panchami V Devadiga	CSE	87.60%	25
28	Poorvika	CSE	89%	53
29	Prakrathi	CSE	87%	123
30	Pranav P K	CSE	87%	2
31	Pratham G Kumar	CSE	76%	80
32	Preethish D Souza	CSE	76.66%	81
33	Sahana	CSE	88.33%	114
34	Sameer Acharya	CSE	87%	36
35	Samruddi	CSE	73.66%	83
36	Sanya	CSE	67%	105
37	Sarthak	CSE	77.33%	28
38	Shashank Kamath	CSE	56.66%	45
39	Shraddha	CSE	73.67%	70
40	Shravan	CSE	55%	116
41	Shreedhanya G Maddodi	CSE	72.33	128
42	Shreya Shetty	CSE	69.66%	19



43	Shreyas Satish Bhat	CSE	54.33%	84
44	Shrikari R bhat	CSE	68.66%	118
45	Thrishna D Poojary	CSE	91%	29
46	Vidyashree	CSE	81%	94
47	Yashaswini	CSE	87.33	121
48	Arpitha Tantry	AI/DS	89.66%	55
49	Arwin Jackson Maben	AI/DS	89.50%	191
50	B. G Prarthana Hebbar	AI/DS	65.66%	203
51	Bharathraj A Nayak	AI/DS	74%	32
52	Dhanya	AI/DS	87%	174
53	Nishan D Shetty	AI/DS	90%	145
54	Pratheeksha Nayak	AI/DS	73%	35
55	Prathik	AI/DS	81%	69
56	Rakshitha	AI/DS	79%	43
57	Sanvi Shettigar	AI/DS	97%	93
58	Shetty Raksha Uday	AI/DS	92%	17
59	Shri Raksha Bhat	AI/DS	84	117
60	Vandana V devadiga	AI/DS	86%	208
61	Vighnesh	AI/DS	67.66%	190
62	Abhijith	AI/ML	83.67%	140
63	Anvith S Sherigar	AI/ML	87%	197
64	Dhanraj L Poojary	AI/ML	80%	198
65	Maneesh Shetty	AI/ML	80.33%	103
66	Mayur	AI/ML	84%	174
67	Mohammed Simak	AI/ML	62%	134
68	Mourya Raj H N	AI/ML	52.66%	176
69	Navya	AI/ML	90%	213
70	Pavithra Nayak	AI/ML	79.33	146
71	Shriya Devadiga	AI/ML	64.66%	164
72	Sinchana	AI/ML	79.60%	230
73	Spoorthi	AI/ML	75%	119
74	Supraja S M	AI/ML	77.50%	106
75	Vandana	AI/ML	88.67%	30
76	Vignesh Adiga	AI/ML	75.67%	182
77	Abhinandan A Walvekar	ECE	84.33%	63
78	Adithya V Acharya	ECE	92.3	64
79	Akshay	ECE	91.33	132
80	Ashrith	ECE	80.66%	166
81	Bharath	ECE	74.33%	169
82	Chandrika	ECE	90%	57
83	Deeksha	ECE	79%	87
84	Gowrav	ECE	92.33	96
85	K Raksha Nayak	ECE	86.33%	122
86	Likhitha Nayak	ECE	61%	157

87	Manjushree	ECE	55%	42
88	Manohar M	ECE	87.66%	67
89	Mast Shetty Tanmay Bhujanga	ECE	82.33%	159
90	Megha Raju Billava	ECE	87%	13
91	Pradeep Salonkar	ECE	92%	79
92	Rajani Tantry	ECE	85%	124
93	Rupak K Devadiga	ECE	79.67%	126
94	Sakshi S Shetty	ECE	57.66%	135
95	Shamanth	ECE	85%	115
96	Shreya U Shettigar	ECE	63%	60
97	Shreyas U Shettigar	ECE	79.33%	61
98	Sinchara	ECE	51.66%	129
99	Swarnashree	ECE	92%	131
100	Vachan C Achari	ECE	52.66	73
101	Vighnesh	ECE	56%	148
102	Ashrith	Mech	69 %	141
103	Athul	Mech	70.33%	167
104	Ganga	Mech	83.60%	156
105	Karthik K	Mech	79.67%	171
106	Rakshith	Mech	81.66%	229
107	Raviteja R Kulal	Mech	93%	206
108	Sukesh U Ganiga	Mech	69%	189
109	Vignesh	Mech	73.30%	139

**Selection team for admission through Management quota:** Principal and the HODs of Physics, Chemistry and Mathematics.

### 13. Information on Infrastructure and other resources Available:

Details of Class Rooms, Tutorial Rooms, Laboratories, Drawing hall and computer center

#### Class Rooms:

Sl. No	Building Number	Building Name	Room Type	Number of Rooms	Total carpet area (m <sup>2</sup> )
1	Block A	Administrative Block	Classrooms	17	1514
2	Block B	E&C Block	Classrooms	6	599
3	Block C	Civil & Mechanical Block	Classrooms	5	475
4	Block G	Library Block	Classrooms	2	315

#### Tutorial Rooms:

Sl. No	Building Number	Building Name	Room Type	Number of Rooms	Carpet area (m <sup>2</sup> )
1	Block A	Administrative Block	Tutorial Room	2	88
2	Block B	E&C Block	Tutorial Room	1	34
3	Block C	Civil & Mechanical Block	Tutorial Room	2	90
4	Block G	Library Block	Tutorial Room	1	40

### Laboratories:

Sl. No	Building Number	Building Name	Room Type	Number of Rooms	Carpet area (m <sup>2</sup> ) / No. of computers
1	Block A	Administrative Block	Laboratory	8	742
2	Block B	E&C Block	Laboratory	7	687
3	Block C	Civil & Mechanical lock	Laboratory	4	538
4	Block F	Laboratory Complex	Laboratory	18	1670
5	Block G	Library Block	Laboratory	1	115

### CAD Lab:

Sl. No	Building Number	Building Name	Room Type	Number of Rooms	Carpet area (m <sup>2</sup> )
1	Block A	Administrative lock	Laboratory	1	107

### Computer Center:

Sl. No	Building Number	Building Name	Room Type	Number of Rooms	Carpet area (m <sup>2</sup> )
1	Block A	Administrative lock	Computer Lab	1	273

### Central examination facility, Number of rooms and capacity of each room

28 rooms with a capacity of 30 students in each room

### Online examination facility with number of nodes, internet bandwidth..etc

All systems are connected to the internet, 570 Nodes with 1 GBPS internet bandwidth

### Computing Facility:

- Internet Bandwidth: 1 GBPS
- Number and configuration of System: 570 (Dual core, i3, and i5 system processors)
- Total number of systems connected by LAN: 570 (All desktop systems)
- Total number of systems connected by WAN: All systems, also 30 Wi-Fi routers to connect laptops

## Major software packages available:

Sl. No.	Name	License / Part No.
1	Windows Server 2008 R2, Std/Ent – Mak B	VQT7Y-WH2QD-3CVJC-2RPFK-6269H
2	Windows Server 2008, Std/Ent Kms B	GR828-PJ39C-MHX6T-PYVWF-GDGMK
3	Windows Server 2008, Std/Ent Mak B	MPWFH-96Y22-FP6PM-RP8TK-44R49
4	Windows Server 2008 R2, Std/Ent Kms B	6KY4B-M7V8D-BD7X9-82Y96-K26YJ
5	Windows Server 2003 R2, X32 Edition	HYK7G-MH6JP-GYH3W-7F6R8-6GPM8
6	WINDOWS 11 Home 55; WINDOWS Professional275	Preloaded
7	Redhat Linux	RHF0377AP-R4
8	Fedora	OPEN SOURCE
9	Ubuntu 22.04	OPEN SOURCE
10	WisI 8.1 SNGL OLP NL Academic Legalization – 100 Nos.	4HR-00400

## Barrier-free built environment for disabled and elderly persons:

Ramps, Lift, Wheelchairs and accessible toilets are made available for disabled and elderly persons. Also, the admin block is provided with a lift facility.

## Fire and safety certificate:

Issued by Office of the Chief Fire Officer, Karnataka Fire & Emergency Services, Mangaluru Ref No. 15/FSR/DFO/UDP/2024 dated 20-5-2024

Certificate link: <https://sode-edu.in/wp-content/uploads/2025/04/Fire-and-Safety-2024.pdf>

## Hostel Facility:

The hostel facility is available for both boys and girls inside the campus. The Institute has aesthetically designed and ergonomically built separate hostels for boys and girls with all modern amenities and provision for recreational activities along with delicious and nutritious vegetarian food. The hostel administration is taken care of full-time wardens and a faculty member as the chief warden. Adequate water and power supply is ensured round the clock.

**Capacity of the hostel:** Boys Hostel for 154 students and Girls hostel for 142 students

## Estimated cost of hostel accommodation and food charges:

Room Type	No. of rooms	Hostel Charges per annum (Rs)	Food charges per annum (Rs)
2 sharing	42	44,000.00	42,000.00
3 sharing	70	39,000.00	

## Library:

The institute is a member of VTU E-consortium and the entire e-resource requirements are met through this membership with an annual membership fee of Rs. 1,00,000 per year and the fee for procuring the resources at Rs. 750/- per student per annum and that of PG at Rs. 1500/- per student per annum. The details about the available library books and resources are given below:

Sl. No	Description	Numbers available
01	Volumes (Engineering)	19214
02	Titles (Engineering)	4313
03	Volumes (Management)	309
04	Titles (Management)	170
05	Journals (VTU Consortium) Engineering	7520
	(Major of the Journals are International)	

06	Journals (VTU Consortium) Management (Major of the Journals are International)	212
07	Journals (DELNET) Engineering (Major of the Journals are International)	912
08	Journals (DELNET) Management (Major of the Journals are International)	240
09	Digital Library with 10 Computers and Printing and reprography service	
10	Drillbit-Plagiarism Detection Software	
11	Library management software	

### E-Library facility / Remote access to library:

The Library uses the Easylib (Entire Automation System for Library) Software package, which is an integrated multi-user library management system that supports all in-house operations of the library. The software consists of modules on Registration, Acquisition, Cataloguing and Accessioning, Circulation, Periodicals, Members, Setup and Security, Digital Library, Online Public Access Catalog (OPAC), In/Out Management, and Reports. The books/journals can be accessed through OPAC, which facilitates the search for books by author, title, and edition. The Easylib package has been made more efficient by bar-coding the entire library collection.

Remote Access: Remote access through the mLibrary mobile App (Anywhere, Anytime Any device). Through the mLibrary mobile app users can access the library subscription and top open-access academic content including eLearning and multimedia at their fingertips. It gives 24\*7 access to the resources that are subscribed to by the library and also to the open-access resources.

Library link: <https://sode-edu.in/facilities/central-library/>

### Laboratory and workshops:

- The list of laboratories available in each department is given below:

#### Department of AI-DS and AI-ML:

Sl. No	Room Number	Name of the Laboratory	Area (m <sup>2</sup> )/ Computers (numbers)	Major facilities available
1	F106	Computer Lab 1	81	36 i5 Systems with adequate open-source software
2	F107 and F108	Computer Lab 2 and 3	150	36 i5 Systems with adequate open-source software
3	F109	Computer Lab 4	75	36 i5 Systems with adequate open-source software
4	F110	Computer Lab 5	82	36 i5 Systems with adequate open-source software
5	F111	Computer Lab 6	80	36 i5 Systems with adequate open-source software

#### Department of Civil Engineering:

Sl. No	Room Number	Name of the Laboratory	Area (m <sup>2</sup> )/ Computers (numbers)	Major facilities available
1	C001	Concrete and Highway Materials Lab	290.00	Auto Clave Blaine's air permeability apparatus, Compression testing Machine, Vee bee consistometer, Concrete permeability equipment, Bitumen penetration equipment Bitumen ductility equipment, Marshal stability apparatus, Vibrating table,
				Mortar mixing machine, Concrete Mixer, Ultrasonic Pulse velocity Machine, Rebound Hammer (Digital)

2		Models Lab	45.00	Various models
3		Applied Engineering Geology Lab	46.00	Mineral Samples, Rock Samples, Models Charts, Mohr's Scale of hardness
4	C106	Computer Aided Design Lab	85.14	Computers – 24 numbers
5	C202	Environmental Engineering Lab	137.00	Electrical conductivity meter (digital), PH meter (digital) BOD incubator, Digital COD measurement device, Spectra Photometer, Flame Photometer, Turbidity meter, Jar test apparatus, Refrigerator, Double Distillation Unit
6	ASB06	Geo Technical Engineering Laboratory	230.00	Hot air oven, Sieve shaker, Compaction apparatus, Permeability apparatus, Unconfined compression test apparatus, Direct shear apparatus, Tri-axial compression, test apparatus with pore pressure equipment Infrared Moisture Meter, Vane Shear Apparatus
7	C002	Surveying Practice Lab	61.50	Plane table with accessories Auto level, Theodolite, Electronic Theodolite, Total Station

#### Department of Computer Science & Engineering:

Sl. No	Room Number	Name of the Laboratory	Area (m <sup>2</sup> )/ Computers (numbers)	Major facilities available
1	A307	Computer Lab 1	102	36 i5 Systems with adequate open source software
2	A309	Computer Lab 2	102	36 i5 Systems with adequate open source software
3	F101	Computer Lab 3	100	36 i5 Systems with adequate open source software
4	F102	Computer Lab 4	92	36 i5 Systems with adequate open-source software
5	F103 and F104	Computer Lab 5 and 6	145	72 i5 Systems with adequate open-source software
6	F111	Computer Lab 7	80	36 i5 Systems with adequate open-source software

#### Department of Electronics & Communication Engineering

Sl. No	Room Number	Name of the Laboratory	Area (m <sup>2</sup> )/ Computers (numbers)	Major facilities available
1	Ground floor	VLSI Lab	76	Arduino kits, Electrical VLSI tool, LTspice
2	I floor	DSP lab	102	MATLAB

3	I floor	HDL lab	102	Xilinx, FPGA
4	I floor	Analog and digital Circuit lab/communication lab	102	Digital trainer kits, CRO, Power supplies, ICs, Microwave antenna testbench
5	I floor	Electronic Principle and circuit Lab	102	MultiSim
6	II floor	Project Lab	102	Space for mini project
7	II floor	Electrical Lab	102	Electrical equipment kits

#### Department of Mechanical Engineering:

Sl. No	Room Number	Name of the Laboratory	Area (m <sup>2</sup> )/ Computers (numbers)	Major facilities available
1	DB01	Fluid Mechanics Lab	230	Francis Turbine Kaplan Turbine Pelton Turbine Centrifugal and Reciprocating pumps Air Compressors Equipment to Measure COD
2	F003(1)	Design Laboratory	100	Equipment to conduct Determination of Natural Frequency, Balancing of Rotating Masses, Critical Speed of a Rotating Shaft, Fringe Constant of Photo Elastic Material, Stress Concentration using Photo Elasticity, Equilibrium Speed, Sensitiveness, Power and Effort of Porter/Prowel /Hartnel Governor, Pressure distribution in Journal bearing, Principal Stresses and strains, Experiments on Gyroscope
3	F002(2)	Energy Conversion Engineering Laboratory	100	Four Stroke Diesel Engine Cut Section, Two Stroke Petrol Engine Cut Section, Planimeter, Able's Flash and Fire Point Apparatus, Pensky Martin's Flash and Fire Point Apparatus, Redwood Viscometer, Saybolt Viscometer, Torsion Viscometer, Boy's Gas Calorimeter, Bomb Calorimeter, Four Stroke Single Cylinder Diesel Engine Test Rig, V.C.R Petrol Engine Test Rig, Two Stroke Single Cylinder Petrol Engine Test Rig, Four Stroke Four Cylinder Petrol Engine Test Rig with Hydraulic Dynamometer (Morse Test).
4	F002(1)	Heat & Mass Transfer Laboratory	100	Thermal Conductivity of Metal Rod Apparatus, Composite Wall Apparatus, Pin-
				Fin Apparatus, Natural Convection Apparatus, Forced Convection Apparatus, Emissivity Measurement Apparatus, Stefan Boltzman's Constant Apparatus, Parallel & Counter Flow Heat Exchanger Apparatus, Critical Heat Flux Apparatus, Condensation Apparatus, Vapor Compression Refrigeration Test Rig, Air Conditioning Cycle Test Rig, Transient Conduction Apparatus.



5	F004(2)	Metallography and Material Testing Laboratory	75	Universal Testing Machine (60 Tons) Mechanical Type, Wear and Friction Tester, Magnetic Crack Detector 1000 amps, Ultrasonic Flaw Detector, Rockwell Cum Brinell Hardness Tester, Vickers Hardness Tester, Fatigue Testing Machine, Impact Testing Machine, Torsion Testing Machine,
6	F004(1)	Metrology and Mechanical Measurements Laboratory	100	Pressure Gauge Setup, Thermo Couple Setup, L.V.D.T. Setup, Load Cell Set Up, Strain Gauge Setup, Autocollimator Single Axis, Gear Tooth Verniers, Digital Vernier Caliper, Micrometers (0-25mm), Digital Micrometer (0-25mm), Mechanical Comparator, Floating Carriage Micrometer (2 wire / 3 wire), Slip Gauge 83pieces set, Profile Projector, Toolmaker's Microscope, Sine Center 200mm, Sine Bar 200mm, Granite Surface Plates.
7	F001 (1) and F001(2)	Workshop and Machine Shop Laboratory	300	All geared Lathe, Belt driven (Cone Pulley Type) Lathes 12 No.s, Universal Surface Grinder, Slotting Machine Milling Machines, Shaping Machines, Radial Drilling Machine, , Hydraulic power Hacksaw Machine, Bench Grinder.
8	F003(2)	Forging and Foundry Lab	100	Forging furnace Forging tools Mould boxes Foundry tools
9	C106	CAD Lab	107	32 si3 systems with solid edge, Auto CAD software

#### Other Laboratories:

Sl. No	Room Number	Name of the Laboratory	Area (m <sup>2</sup> )/ Computers (numbers)	Major facilities available
1	AB004	Language Lab	112	Computers, Language ;Lab software
2	AB005	Physics Lab	201	Microscopes, various equipment to conduct first year lab
3	C202	Chemistry Lab	137.00	Electrical conductivity meter (digital), PH meter (digital) BOD incubator, Digital COD measurement device, Spectra

				Photometer, Flame Photometer, Turbidity meter, Jar test apparatus, Refrigerator, Double Distillation Unit
4	A110	CAD Lab	150	32 si3 systems with solid edge, Auto CAD software
5	A111	Central Computer Center	178	Computers
6	AB001	Research Center (Chemistry)	20	Facilities to conduct research work
7	A301	Research Center (Physics)	20	Facilities to conduct research work
8	DB01	Fabrication Lab	102	CNC Milling center, CNC Lathe, Welding machine, Computers..etc
9	F105	Innovation Lab	55	Texas instrument kits, Make-it Kits, Computers

### **Institute Innovation Council (IIC):**

The innovation council helps to engage students in innovative and creative activities apart from regular academics by providing opportunities for hands-on activities. The institute has established the innovation council with the following objectives.

#### **Objectives:**

- To create awareness, educate, nurture and inculcate a culture of innovation among engineering students.
- To enable them to generate new ideas and become more innovative.
- To organize an Interdisciplinary project exhibition

#### **Roles and Responsibilities of the Coordinator**

- Enrolment of students as Innovation Council members and allow them to work on innovative projects.
- Periodic activities, workshops, and competitions to keep the spark of creativity, innovation, and design alive and thriving in students.
- Guidance for the development of innovative scientific solutions to solve everyday problems.
- To provide technical support in the form of basic tools, shackles, equipment, raw materials, and project manual/report.
- To monitor the activities of the innovation council.
- To encourage the students to apply for various funds for their innovative projects.

#### **Achievements of the Institute Innovation Council (IIC):**

- NIRF rank for innovation in the band of 150-300
- Received Rs. 2.25 Lakhs towards mentoring three institutes in innovation.

#### **Institute social media cell:**

The institute has established a Social Media Cell headed by a senior faculty member. This cell updates the activities and programs organized in the institute in social media like Facebook, Instagram, and LinkedIn. Also, the cell publishes the institute's promotional information (Text, pictures, and videos) on social media. It also supports in live streaming of programs conducted in the institute.

**Compliance of Academic Bank of Credit in the institute:** Yes. Implemented.

#### **Short video of the infrastructure and facilities of the institute:**

<https://drive.google.com/file/d/1YF8D3f1YLF-2EMV2VPsSCvheqVJaCgiw/view?usp=sharing>

## Sports and Games facility:

The Department of Physical Education, in addition to guiding the students in physical activities and organizing sporting events and games, trains and prepares students for various inter-collegiate and University level athletic competitions and tournaments. Facilities for various indoor and outdoor games like carom, chess, Table Tennis, Shuttle badminton, cricket, volleyball, basketball, handball and throw ball are available for the students. Also, a Multi-gym facility has been provided for the students and staff.

### Details of the Department of Physical Education and sports/games facilities:

- Department Office
- Athletic Field & Cricket Field
- Carrom, Chess and Table Tennis facilities
- Basketball court (Outdoor Court, Concrete flooring)
- Shuttle badminton (4 - Outdoor Courts, Interlock flooring)
- Volleyball & Throw ball Court
- Kabaddi Court
- Ground Store Room
- Gymnasium

### Teaching–Learning Process:

- Curricula and syllabus for each of the Programmes are approved by the University.  
<https://vtu.ac.in/en/b-e-scheme-syllabus/#menu0>
- Academic Calendar of the University  
<https://vtu.ac.in/en/?s=ACADEMIC+CALENDAR>
- Academic Time-Table of the Institute:  
<https://sode-edu.in/wp-content/uploads/2025/04/Class-Time-Table-24-25-ODD.pdf>

## Soft Skill Training facility:

The institute takes care of soft skill training for the students in the following ways: The soft skill training commences in the third semester BE program and extends up to the seventh semester covering various aspects of soft skill training with almost 30 hours of training per semester. The institute hires trained personnel for this program. Also, few faculty members of the institute are well-versed in soft skill training and the follow-up sessions will be conducted by the internal trainers.

## Continuous Internal Evaluation (CIE):

The Semester Examination and Continuous Internal Evaluation procedure are prescribed by Visvesvaraya Technological University, Belagavi and the Institute follows the same. Apart from this, the institute conducts various technical and non-technical events to assess the student's performance.

## Formative Assessment

The formative assessment refers to a wide variety of methods that teachers use to conduct in-process evaluations of student comprehension, learning needs, and academic progress during the course. CIE is implemented in academic areas using different evaluation techniques like internal assessment tests, quizzes, seminars, assignments, internships, etc., as prescribed by the university. The performance of the students in the internal assessment tests is regularly recorded and monitored by the mentors in the Cumulative Performance Diary (CPD) as well as in the Institute Management Information System (MIS). Results of internal tests and university examinations are analyzed and meetings are conducted to discuss the performance of the students. Parents of the poor performers are requested to meet the mentors, to have a close discussion about the student's performance. As a part of continuous internal evaluation, students' Leadership qualities, presentation skills, etc. are recorded in CPD by the respective mentors.

## Summative Assessment

At the end of the semester, the assessment of students in academic and non-academic areas are included in the summative assessment. The summative assessment in the academic areas, like, the subject knowledge, the skill set of the students, etc. is tested by the university examinations at the end of the semester. Practical courses and seminars are also a part of SEE as per the guidelines of VTU.

## 14. Placement and Training

The training and placement cell of the institute conducts soft skill, aptitude and technical training to students to enhance the job opportunity. The cell also strives hard to bring the companies for campus recruitment. The Placement process is initiated with a clear focus on all levels of companies that are contacted and invited for the campus recruitment drive which matches all the academic levels of the students.

The placement cell works as a liaising office between the industry and academia in organizing guest lectures, internships, industry visits, industry-linked projects and campus placements. It helps the students to develop contacts with companies while undergoing internships and doing their project work in their final semester.

The college has a fully furnished placement department to conduct the training and interview process. The department has 3 seminar halls, 2 GD rooms, and 8 interview cabins to conduct the campus pool selection process for 500+ students.

### Campus placement in last three years with Min/Max/Average salary

Academic Year	No. of job offers to students	Minimum salary	Maximum Salary	Average salary
2021-22	199	1,44,000.00	8,00,000.00	4,10,000.00
2022-23	248	3,00,000.00	8,50,000.00	4,20,000.00
2023-24	162	4,00,000.00	8,50,000.00	4,50,000.00
2024-25	291*	4,00,000.00	8,50,000.00	4,50,000.00

\*ongoing

Link for Placement Cell: <https://sode-edu.in/placement/>

## 15. List of Research Projects/ Consultancy Work

### a. Research Projects Undertaken during the last five years

Sl.No.	Dept.	Name of the Project	Name of the PI/CI	Dept. of PI	Year of Award	Amount in Lakh.	Duration	Name of the Funding Agency	Type (Govt/ Non Govt.)
1	MECH	Development of Biodegradable Implant Materials	Dr. Gajanan Anne (PI) / Dr. Reenna Kumari (CI)	Mechanical Engineering	2021-22	12 Lakhs	2 Years	Visvesvaraya Technological University, Belagavi Under VTU Research Grants Scheme - 2021	Government

2	MECH	Fabrication and Study of Biodegradable Leaf Plates	Dr. Sudarshan Rao K	Mechanical Engineering	2021-22	0.30 Lakhs	6-8 Months	Karnataka Science and Technology Academy, Science and Technology Department, Govt. of Karnataka, Bengaluru Under Short-Term Research Scheme 2021-22	Government
3	MECH	Development of High Strength Corrosion Resistant Magnesium Alloy for Biodegradable Implants	Mr. Aditya Kudvas	Mechanical Engineering	2023-24	9.35 Lakhs	3 Years	Ministry of MSME, Government of India for innovative idea under National Level MSME Idea Hackathon 2.0.	Government
4	MECH	Development of Tree D-Limber for Shade Trees in Coffee Plantation	Mr. Karthik V	Mechanical Engineering	2023-24	10.625 Lakhs	3 Years	Ministry of MSME, Government of India for innovative idea under National Level	Government

								MSME Idea Hackathon 2.0.	
5	ECE	A Novel Approach for Efficient Text Document Summarization of Kannada Script	Mr. Sachin S Bhat	Electronics & Communication Engineering	2019-20	1 lakh	1 year	Visvesvaraya Technological University (TEQIP)	Non Government
6	ECE	Building Database of Halegannada Characters Used in Kannada Inscription and Study of their Character Recognition Method	Dr. Sachin S Bhat	Electronics & Communication Engineering	2021-22	0.35 lakhs	1 year	Karnataka Science & Technology Academy	Government
7	ECE	Sensor Based Device for Predicting Moisture Content of Agricultural Field and Safe Bearing Capacity of Soil	Dr. Sachin S Bhat	Electronics & Communication Engineering	2021-22	1.25 lakhs	1 year	Karnataka State Council For Science And Technology	Government
8	ECE	Surgical Sponge Detection System	Dr. Sachin S Bhat	Electronics & Communication	2022-23	11.5 lakhs	1 year	Government of India	Government

				Engineering					
9	ECE	To assist the Police department in capturing the accident information on-site with minimal manual inputs and to register an online First Information Report	Dr. Sachin S Bhat	Electronics & Communication Engineering	20 22- 23	10 lakhs	1 year	Government of Karnataka	Government

#### b. Research/consultancy related activities

Department: Civil Engineering:			
Sl.No.	Name of the Client	Type of Consultancy	Amount in Rs.
1	Nirmithi Kendra	Third Party Consultancy work for projects in around Udipi	10,00,000
2	Vinith S Amin, Udupi	Material Test	7,00,000
3	Associate Builders and Constructions, udupi	Material Test	7,00,000
4	M/S SKS Karkala Infra Projects Pvt. Ltd. Karkal	Material Test	5,00,000
5	Makara Enterprises, Kaup	Material Test	2,00,000
6	JNS Constructions	Material Test	50,000
7	Shrinidhi Blocks	Material Test	10,000
8	Assistant Executive engineerk.U.W.S & D Board, Sub Division,Mangalore	Material Test	10,000
10	SMC Infrastructure Pvt Ltd Udupi	Material Test	10,000
11	Nirmala Construction Ajjarkadu, Udupi	Material Test	10,000
12	Dhanik S Shetty	Material Test	10,000

13	Apex Consultancy	Material Test	10,000
14	Baliga Fishnets	Material Test	10,000
15	AG Associates	Material Test	10,000
16	Carmel English School	Stability test	11,800
17	Anandatirtha Degree and PU College	Stability test	11,800
18	Dr. G. Shankar Government Women's First Grade College and P. G Study Center Ajjarkad, Udupi	Stability test	11,800
19	Government First Grade College, Hiriadka	Stability test	11,800
20	Little rock	Stability test	11,800
21	Mulki Sunder Ram Shetty College MSRS	Stability test	11,800
22	St. Cecily's higher primary school	Stability test	11,800
23	St. Francis Xavier English Medium school Udyavara	Stability test	11,800
24	St. Lawrence Eng. Med. High School, Moodubelle	Stability test	11,800
25	SVH High school	Stability test	11,800
26	SVH Primary and Nursery	Stability test	11,800
27	Adiudupi English Medium and Higher Primary School	Stability test	11,800
28	Creative PU college	Stability test	11,800
29	Government First Grade College	Stability test	11,800
30	IMS Manipal Hotels Pvt. Ltd. Manipal, Udupi	Material Test	10,000
31	Sode Vadiraja Matha	Material Test	10,000
32	Ultratech Cement Limited, Industrial Area, Manipal.	Material Test	10,000

**Department: Mechanical engineering**

Sl.no.	Name of the client	Type of consultancy	amount
1	SMVITM, Bantkal	Ceiling Fan Painting (60 Fans)	6000
2	SMVITM, Bantakal	Fabrication of Racks	6000
3	External- Sandeep	S S Plate (Strainer) Drilling Work (1 No)- 350 Holes per Plate)	6000
4	External	Fabrication of Garden Pot stand	1800
5	External- Sandeep	Machining of COP & DRAG	5000



6	External- Sandeep	Shaft Turning- Flange	1000
7	External- Sandeep	Bearing Seating and Profile Milling	3000
8	External-Lingaraj K Ritti, Assistant Professor, Mech,smvitm, Bantakal	Ball Burnishing	3500
9	External-Aditya Kudva S, Assistant Professor, Mech,smvitm, Bantakal	Fabrication of Frame	1000
10	External	Fabrication of M S Frame	354
11	SMVITM, Bantkal	Fabrication of Racks	3000
12	External	Fabrication of G I Tube Stand	3000
13	External- Sandeep	S S Plate(Strainer) Drilling Work (1 No)- 350 Holes per Plate)	4000
14	External- Sandeep	Machining of COP & DRAG	5000
15	SMVITM, Bantkal	Alteration Work of Grill Gate at Bhootaraj Temple	0
16	SMVITM, Bantkal	Rework of Stair Case Railings at Main Building	0
17	External-Dr. Ganesh Aithal, Vice Principal, SMVITM, Bantakal	Fabrication of Clamps	950
18	External- Dr. H Udaya Prasanna, Professor, Mech,smvitm, Bantakal	Fabrication of Garden Stand	2700
19	External- (Mr. Sudarshan Rao, Flower Decorator, Padubidri)	Fabrication of Metal Welcome Arc	4800
20	External-Durga Parameshwari Temple, Nandikoor	Fabrication of Metal Structure	1200
21	External- Sandeep	S S Plate (Strainer) Drilling Work (1 No)- 350 Holes per Plate)	-----
22	External	Pump Mounting Bracket Machining	4000
23	External- Student- GURURAJA S HEBBAR (17me021)	Student Project Work- Profile milling	400
24	External-Student- SHAMAN HEGDE (4MW17ME056)	Student Project Work- Turning and Bearimng Seating	300
25	External-Student- ABHIJITH Civil Engg. Dept.	Student Project Work- Acrylic sheet profile Milling	400
26	External- Manjunatha S, Assistant Professor,Dept. Of Mechanical Engineering, SMVITM, Bantakal	Drilling and Counter Bore, Milling Machine	300

27	External- Mr. Srikanth Shettigar, Lab Supervisor, Dept. Of Mechanical Engineering, SMVITM, Bantakal	Mechanical Work- Bush Turning	500
28	External- Student- SHAMAN HEGDE (4MW17ME056)	Student Project Work- Turning and Bearing Seating	5000
29	External-Student- Prathamesh (4MW17ME045)	Student Project Work- Turning and Bearing Seating	3000
30	External-Student- ABHIJITH Civil Engg. Dept.	Student Project Work- Acrylic sheet profile Milling	1500
31	External-Student- Nidinath V Shetty (4MW16ME050)	Student Project Work- Milling & Turning, Machining	1000
32	External-Sundeet Soares	CNC Milling-Rework Casting & Plate	800
33	External-Principal, NMAMIT, Nitte	CNC Milling Machining Charges	1500
34	External-Ananda Theertha Vidyalaya	Table Mounted Mobile Stand	3800
35	External-Sundeet Soares	S S Plate (Strainer) Drilling Work (1 No)- 350 Holes per Plate)	-----
36	SMVITM, Bantkal	Fabrication Work of Power House Roofing	20000
37	External	Fabrication of Window Grill	4000
38	External	Fabrication of Conch Arc for Decorative Purpose	1000
39	External	Fabrication of Butter Milk Machine Stand	200
40	External	Inspection Report on Chapathi, Poori, Parota Making Machine	5000
41	External	Welding Work of Bio Fuel Stove Stand	100
42	Internal	Fabrication Work of Power House Fencing	15000
43	External	Fabrication of CNC Machining Work	500
44	Internal	Fabrication of Battery stand	1000
45	External	Fabrication Work of Decorative Arc	1500
46	External	Fabrication Work of Decorative item	4000
47	External	Fabrication Work of Windows	1600
48	External	Fabrication Work of Garden Stand	4000

49	External	Fabrication work of Welded Angle Bracket	150
50	External	Fabrication of Frame Work (IRON)	2500
51	External	Inspection Report Submission Car bearing Registration No: KA-20MB 6790 (Dr. Jayakrishna Nayak)	2000
52	External	Fabrication Work of Decorative Arc	2190
53	External	Fabrication Work to Temple for Decorative Arc	4000
54	External	Fabrication Work of M S Angle Rack(5' * 3')	3040
55	External	Fabrication Work of G I Tube Stand	2400
56	External	CNC Consultancy Work	300
57	External	Fabrication Work Labour Cahrges	2000
58	External	CNC Consultancy Leth Work	300
59	External	Fabrication Work Labour Cahrges	1500
60	External	Fabrication Works	3500
61	External	Fabrication Work	500
62	External	Fabrication Work of Ladder	2400

### c. MoUs/Collaborations/Linkages

Sl.No.	Name of the MoUs/Collaborations/linkages	Collaborating Agency	Duration of MoUs/Collaborations/linkages
1	Skill Based Training , Industrial Visit	EZ Technologies	21st October 2024
2	Skill Based Training	Comedkares	05/02/2024 - 05/02/2027
3	R&D projects	Capital Equipment Services Ltd	05/10/2023 - 05/10/2026
4	Online Resources	Infosys Limited	27/09/2023 - 27/09/2028
5	Internship	Quantum Learning	24/09/2024
6	Project Based Learning	Manipal Academy of	15/02/2023 - 15/02/2026

		Higher Education	
7	Skill Development Programs	St. Mary's College , Shirva	12-06-2020
8	Placement	Reference Globe	26/09/2019
9	Training	Zestech global pvt. ltd.	19/09/2018 - 19/09/2021
10	Skill Development Programs	Sangam One Connected Services Pvt. Ltd.	01/08/2018 - 01/08/2019
11	Research Activity	Cere Labs Pvt. Ltd.	23/03/2017 - 12/2/2022
12	Placement Recruitment Training	Mangalore Infotech Pvt. Limited, Mangalore	2023-27
18	Placement Recruitment Training	Zestech Global, Bengaluru	2018-19
20	Placement Recruitment Training	J V Global, Bengaluru	2019-20
25	Placement Recruitment Training	FACE, Coimbatore	2019-20
28	Placement Recruitment Training	Base foundation	2020-21
29	Placement Recruitment Training	Seventh Sense Talent Solutions	2022-23
35	Placement Recruitment Training	10 Seconds	2022-23
37	Internship	Alar Innovations Pvt Ltd ,Kumta	1YEAR(2023)
38	Internship	Load Controls India Pvt Ltd	1YEAR(2023)
39	Internship	V I Solutions	1 years(2022)
40	Internship	CloudE Mysuru	3YEARS(2018)
41	Internship	CVC Pvt. Ltd Bangalore	2014 - 2018
42	Internship	Sky Skill Academy	1 year(2022)
43	Trainig- Internship- Placement - Arrangind Technical / Guest Lectures, Help Industrial Visit	Sristi Ventures, Ecowall, Padubidri	3 Years(2021)

44	Trainig- Internship- Placement - Arrangind Technical / Guest Lectures, Help Industrial Visit	AGRIMA, Roof & Façade Systems, Bengaluru	3 Years
45	V&G Industrial testing laboratories PVT . LTD	Mr. Vittal M Poojary and Mr.Girish Bhat	from 25th March 2019 effect for a period of 36 month
46	Reference Globe	Mr. Nag Kukkadapu	26-Sep-19
47	Focus Academy for career Enhancement (FACE)		23rd January 2020, effect for a period of 3 year
48	Indian Society for Training & development (ISTD)	Prof. Ramakrishna Chadaga	04-Jun-20
49	St. Mary's College	Dr. Herald Ivan Monis (Principal)	12th June 2020
50	Manel Srinivas Nayak Institute of Management	Dr. Molly S Chaudhuri (Principal)	12-Jan-21
51	Kanara Chamber of Commerce & Industry(KCCI)	Mr. Shashidhar Pai Maroor	04 February 2022, effect for a period of 3 year
52	Great Lakes E-learning Services Pvt. Ltd	Mr. Arjun Nair (Co- Founder)	08-Feb-21
53	Poornaprajna institute of Management,Udupi	Dr. Bharath V (Director)	21-03-2021, effect for a period of 60 months
54	Sristi Ventures, Ecowall	Mr. Bhoopathy Shetty	22 September 2021, effect for a period of 3 year
55	Mangalore Infotech Solution PVT. LTD	Mr. Prashanth Shenoy (CEO)	21-Mar-23
56	Manipal Academy of Higher Education	Dr. P. Gridhar Kini	15-02-2023, effect for a period of 3 year
57	Rooman Technologies PVT LTD	Mr. Jayanth V (Director)	20-Nov-23
59	COMEDKARES	Dr. S Kumar (Executive Secretary)	05-02-2024, effect for a period of 3 year
60	Mirafra Software Tech Pvt. Ltd	Mr. Abhishek Shukla (Director)	15 November 2022, effect for a period of 3 year
61	Manipal Skill Development Center	The Registrar, MSDC, Mnaipal	04-Jun-20244
62	Section Infin 8	Mr. Vishwas US	24-Oct-2024
63	Kakunje Software ltd	Mr. Gopalkrishna	02- Sept- 2024

		Bhat. Managing Director	
--	--	----------------------------	--