

# **SHRI MADHWA VADIRAJA INSTITUTE OF TECHNOLOGY AND MANAGEMENT**

(A unit of Shri Sode Vadiraja Mutt Education Trust ®)  
VISHWOTHAMA NAGARA, BANTAKAL, UDUPI

## **An Affiliated Institution**

Affiliated to VTU, Belagavi, Approved by AICTE, New Delhi

Accredited by NBA (BE –CSE, ECE) and NAAC with A



## **MANDATORY DISCLOSURE**

## Table of Contents

1.	Name of the Institution .....	1
2.	Name and address of the Trust and the Trustees .....	1
3.	Name and Address of the Principal .....	1
4.	Name of the Affiliating University .....	1
5.	Governance .....	2
6.	Programmes offered: .....	7
7.	Faculty .....	8
8.	Fee Structure .....	9
9.	Admission .....	11
10.	Admission Procedure .....	11
11.	List of applicants (2023-24): .....	12
12.	Results of Admission under Management Seats/Vacant Seats .....	18
13.	Information on Infrastructure and other resources Available: .....	24
14.	Placement and Training .....	32

## 1. Name of the Institution

SHRI MADHWA VADIRAJA INSTITUTE OF TECHNOLOGY AND MANAGEMENT

Area: Vishwothama Nagara  
Post: Bantakal  
Dist: Udupi  
Pin: 574 115  
Telephone: 0820-2484182 / 7483031199 / 9611615001  
Fax: 0820-2484184

## 2. Name and address of the Trust and the Trustees

### Trust:

Shri Sode Vadiraja Mutt Education Trust (R)  
Bhoovaraha Complex  
Car Street, Udupi  
Pin: 576 101  
Phone: 0820-4294005

### Trustees:

1. H. H. Shri Vishwavallabha Theertha Swamiji  
President  
Shri Sode Vadiraja Matha Education Trust  
Car Street, Udupi, Pin: 576101  
Phone: 0820-4294005  
trust@sode-edu.in
2. Shri. P. Srinivasa Tantry  
Vice President  
Shri Sode Vadiraja Matha Education Trust  
Car Street, Udupi, Pin: 576101  
Phone: 0820-4294005
3. Shri. Rathnakumar  
Secretary  
Shri Sode Vadiraja Matha Education Trust  
Car Street, Udupi, Pin: 576101  
Phone: 0820-4294005
4. Prof. B. S. Revankar  
Trustee  
Shri Sode Vadiraja Matha Education Trust  
Car Street, Udupi, Pin: 576101  
Phone: 0820-4294005
5. Shri. H. V Gowthama  
Trustee  
Shri Sode Vadiraja Matha Education Trust  
Car Street, Udupi, Pin: 576101

## 3. Name and Address of the Principal

Dr. Thirumaleshwara Bhat  
Principal  
0820-2589182 / 9449330555  
principal@sode-edu.in

## 4. Name of the Affiliating University

Affiliated to Visvesvaraya Technological University, Belgaum, Karnataka State

## 5. Governance

### Members of the Governing:

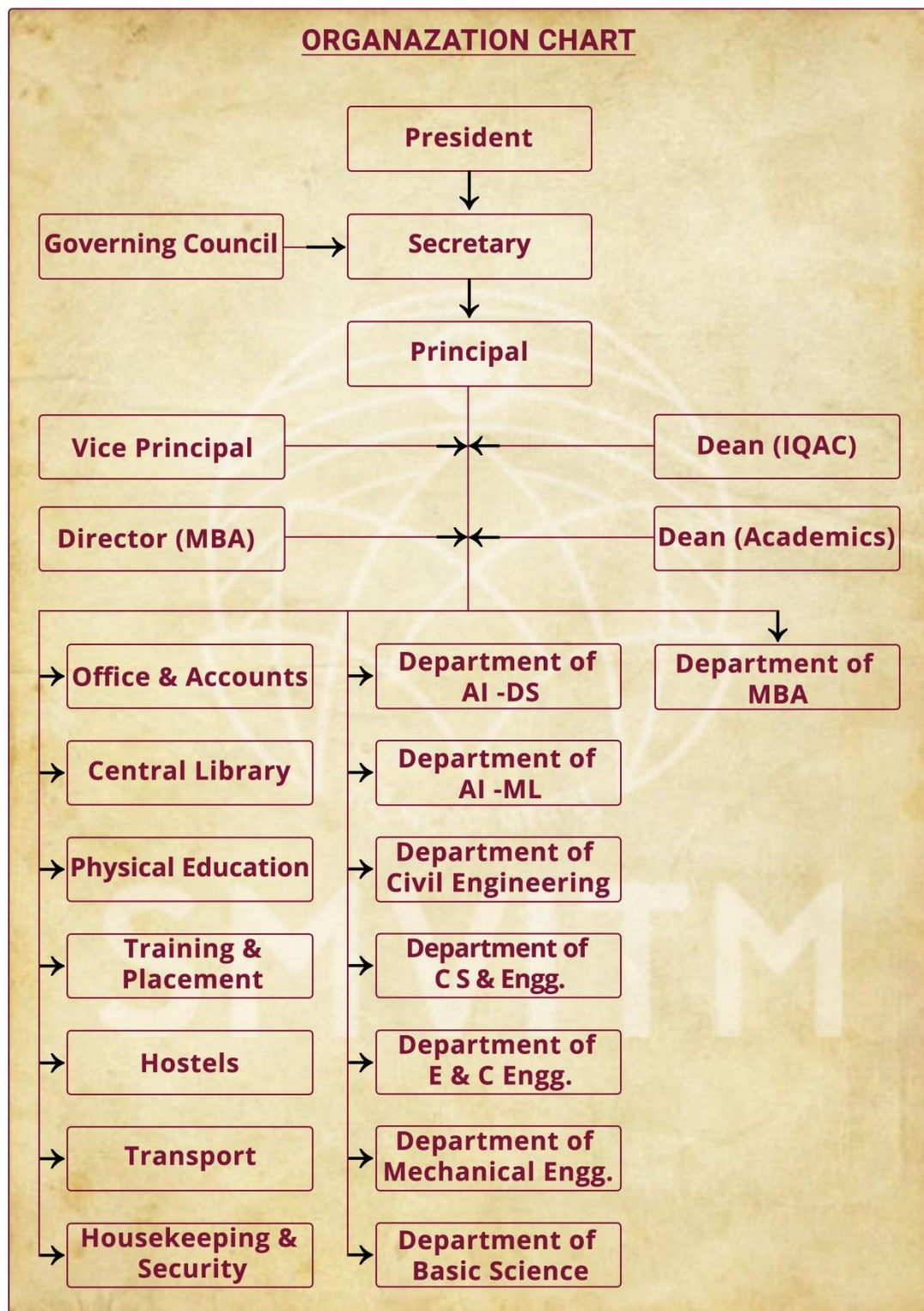
Members of the Governing Council and their brief background are as follows:

Sl. No	Name	Designation / Profession
1	H. H. Shri Vishwavallabha Theertha Swamiji	Chairman of the trust Pontiff of Shri Sode Vadiraja Matha
2	Shri. Rathnakumar	Secretary of the institute
3	Dr. Udipi Srinivas	Member of the Governing Council Former Professor, IISc, Bengaluru
4	Dr. S. G. Gopalakrishna	Member of the Governing Council Director, NCET Bengaluru
5	Shri. B. Y. Rajeshwar Singh	Member of the Governing Council Industrialist
6	Dr. Gopala Mugeraya	Member of the Governing Council Vice President (Technical), NITTE University
7	Shri. Sunder Madakshira	Member of the Governing Council Head, Marketing, Adobe India Pvt. Ltd., Bengaluru
8	Shri. P. Ramadas	Member of the Governing Council MD, Ace Manufacturing Systems Ltd. Bengaluru
9	Dr. M. S. Moodithaya	Member of the Governing Council Vice Chancellor, NITTE University
10	Dr. Radhakrishna S. Aithal	Member of the Governing Council Head, Skill Development Centre, Manipal
11	Shri. Jagadish Acharya	Member of the Governing Council Former CEO, Asian PPG
12	Shri. Harsih Belman	Member of the Governing Council Head, Premier Investments, Udupi
13	Shri. Nanda Kumar	Member of the Governing Council
14	Shri. Shamasundar H.S	Member of the Governing Council Paajaka Consultancy Services, Bengaluru
15	Dr. Ashwath M U	University Nominee Principal, BIT Bengaluru
16		Member of the Governing Council AICTE representative
17		Member of the Governing Council Govt. of Karnataka representative
18	Dr. Thirumaleshwara Bhat	Member Secretary Principal of the Institute
19	Dr. Ganesh Aithal	Staff Representative Professor, Dept. of Computer Science & Engg

### Frequency of the Board Meeting:

Bi-annually

## Organizational chart and processes:



The institute is established by H. H. Shri Vishwavallabha Theertha Swamiji in the year 2010 with the objective of providing quality engineering education at an affordable cost. The Institution is managed by Shri Sode Vadiraja Mutt Education Trust ®, under the aegis of Shri Sode Vadiraja Matha, Udupi which is known for its service to society. To enhance and sustain quality professional education on par with the best in its class institution, a robust structure has been established.

The Governing Council (GC) is the chief policy-framing body of the Institute. The president of the Institute is the Chairman of the GC, which holds meetings at least twice a year and takes all policy decisions for the institute. The institute trust has members who have served the industry/academia for quite a long period. The Principal is the Secretary of the Governing Council.

The Principal and the Heads of Departments monitor the academic, administrative, and student-related matters in the Institute. Various committees coordinate the routine activities and work in the smooth functioning and development of the Institute.

## **Involvement of Faculty and students in academic affairs/improvements**

### **Faculty Involvement:**

Faculty members are involved in PAC (Programme Assessment Committee), DAB (Departmental Advisory Board), and IQAC (Internal Quality Assurance Cell) to solicit ideas and opinions to strengthen the system. In addition, faculty members are leading the different supportive committees for the smooth functioning of the Institution.

### **Student Involvement:**

The Institute strongly believes in Outcome Based Education and involves the students in experiencing the authority and responsibilities and to ensure that the students imbibe graduate attributes adopted by the institute. All the students are provided a fair opportunity in all the affairs of the Institute, viz., curricular, co-curricular, and extracurricular activities.

The departments have a minimum of two students as representatives from each section to bring academic matters to the forum initially at the department level and the institutional level. All the departments conduct meetings with the student class representatives after every internal test to address academic-related matters. Apart from this, the Management conducts a yearly meeting with class representatives to solicit their opinions regarding academic and institutional facilities. All the departments have a department student chapter/society, professional associations, and various social clubs. The Head of the Department, staff, and students of the respective departments in consultation with the Principal choose the office bearers. In addition, the students are actively involved in the Outcome based Education system to strengthen and sustain the teaching-learning process. Student representatives are also involved in the PAC, DAB, and IQAC. Further, the institution ensures students' involvement in various institute-level academic and administrative committees to create a conducive environment for the overall development of the students and to understand ground reality from the student's perspective. Moreover, their association with these committees ensures improvement in the POs such as team building, professional ethics, and the role of an engineer in society, the environment, and sustainability.

The Students (chapter/forum) Associations such as IEEE, ISTE, Cultural Committee, Grievance Cell, Anti-ragging Committee, Sports Committee, NSS, YRC, NCC, etc. have student representatives to create proactive pupils.

## **Mechanism/ Norms and Procedure for Democratic/ Good Governance**

### **Service Rules:**

Service rules are prepared and approved by the Governing Council. The procedure of requirements, promotion policy, leave rules, etc. is explained in the service rules. The same is disseminated to all the faculty and staff. Printed books are made available with all the HODs and soft copy is made available on the institute website. Any changes made to the service rule are made known through circulars.

### **Policies:**

The institute has well-defined rules, policies and procedures for the students and staff. Based on the need, amendments are made to the policies and procedures with prior information to the students and staff. The recruitment and promotional policies are also clearly defined. Following are the rules, procedures and policies of the institute.



**Published rules:**

Rules	Applicable to	Publication and awareness	Year of Publication
University Rules	Students and staff	Published on the University website. Every student and faculty has access to the handbook published by VTU.	2002, amended from time to time with information on the university website
Institute Rules	Students and staff	Published on the website.	2010, amended from time to time with information on the university website
Service Rules	Faculty & Staff Members	Prepared by the institute and a copy of the same is available in every department and website	2010, amended from time to time. A copy is available with the H.O.D's for the reference of faculty/ staff members.
Library Rules	Students and staff	Published on the website.	2010, amended from time to time and displayed in the library
Regulations for Hostels	Hostel students	Published on the website and hostel notice boards	2010, amended and given when joining the hostel, published in the hostel notice board
Rules for Internet access	Staff and Students	Published on the website and student notice board	2016, amended from time to time.
Bus Transport Rules	Faculty & staff using transport facility	Published on the website and student notice board	20120. Amended

**General Policies:**

- Conduct, valuation, and documentation of internal examinations are organized by the Dean (Academics).
- Norms are established for student etiquette, behavior, and campus/hostel discipline.
- Appointment of staff is done by the Selection Committee, after ascertaining the qualifications, interview, and demonstration lectures.
- Financial/Administrative issues are routed through proper channels (HOD & Sections Heads) for approval by the Principal.
- The principal has full autonomy over academics, finance and implementation of various policies and procedures
- The HOD has autonomy over departmental matters and reports to the Principal.
- Discussion on Inter-departmental/Institute matters takes place in the Institute Council.
- All faculty allocations are approved by the Governing Council and all appointments are ratified by the Governing Council.
- Appointments are instituted only after due advertisement, interview, and demonstration to ensure fairness and transparency in the selection process.
- The role of the Principal in financial, administrative, and academic matters are well-defined.
- The posts of Vice Principal, Dean (Academics), and Dean (QA) are created to ensure autonomy and administrative ease. The Vice Principal is responsible for the overall administration in the absence of the Principal. In addition, the Vice Principal is responsible for promoting research, publication, incubation, and start-ups in the institute. Similarly, the Dean (Academics) will take care of all academic-related matters and the Dean (QA) is responsible for the quality assurance and accreditation.
- There is a periodic revision in pay scale/allowances and the same is to be approved by the Governing Council.
- The designation and promotion of faculty is strictly as per AICTE norms, and the institute has a promotion policy as well (published in the service rule)
- Depending on the performance appraisal, the staffs employed under training is absorbed into probation and permanent employment, The period of training/probation may be extended, if necessary, and promotions are according to AICTE regulations.
- The Institute has implemented a Performance Based Appraisal System (PBAS) for assessing the performance of the faculty and the promotion of the faculty/staff member is based on his/her performance and not by right. Similarly, incentives are sanctioned for good performers based on his/her performance/contribution.
- The Institute extends support to any faculty member pursuing a doctoral degree

## Transparency in financial functions:

The Governing Council has authorized the Principal of the institute to deal with the financial aspects. The budget is prepared by each department before the commencement of each financial year, and the same is discussed in the Governing Council (GC) before giving its approval. The investment in infrastructure and facilities and the purchase of equipment and services for various departments are placed before the GC. This Committee decides on investment in infrastructure and facilities. The Principal will discuss and decide the various requirements of the institute and place the same before the Secretary for approval. Approval by the secretary for all major purchases, and investments is mandatory.

**Payment of Salary and Mandatory Payments:** The salary is paid on the 5th day of every month and it is approved by the Secretary. All mandatory payments such as Provident Fund, Income Tax, ESI contribution..etc shall be paid on or before the 15<sup>th</sup> of every month.

**Deputation for research/post-doctorate/FDPs/Workshops:** The faculty member shall submit a formal request for any of the career advancement schemes to the respective HOD. Based on the recommendation by the HOD, the Principal will approve the requests. Permission from the Secretary is required for deputing faculty member(s) for which the expenses are more than 15,000 per faculty.

**Financial power to the HODs:** The Heads of various departments are permitted to spend Rs. 15,000 on simple equipment/facilities/books ..etc required for the classes/laboratories.

## Transparency in academic functions:

- The academic rules and regulations of the Institute are published on the Institute's website. A copy of the hostel rules and regulations is given to each student at the time of admission and the same is displayed on the hostel notice board
- Any changes to the rules and regulations are intimated to the staff and students through circulars displayed on notice boards and very important information is read out in the classrooms
- The Institute strictly follows the rules and regulations of the University, which are available on the University website
- The student's attendance in each subject, marks scored on the test, and end-semester examination marks and grades are displayed on the notice board and also shared with the parents from time to time.
- The students are permitted to go through their assessment books and inform them of any discrepancies to the concerned teacher. If it is disregarded by the faculty, they can approach the HOD and the Principal

## Transparency in administration and auxiliary functions:

- All administrative decisions are taken by the GC of the institute, and administrative decisions related to the functioning of the institute are communicated to the HODs and section heads
- Administrative decisions related to staff members are communicated to them during general staff meetings, which are held twice a semester
- Changes in pay scale and allowance patterns are declared in general staff meetings and are strictly followed by the Management
- Service registers are maintained for each faculty member and a copy of the letter issued to a staff member is kept in an individual file, which is maintained by the HR department
- The audited balance sheet of the Institute is available on its website
- The admission policies are made clear on the website and are also displayed at the entrance of the administrative block
- The Institute has provided email facilities to all faculty, staff, and students. The concerned authorities will share administration information through e-mail if the need arises

## Student Feedback on Institutional Governance/ Faculty Performance:

The institute has adopted a well-organized feedback collection process through the online system using MIS. The students do not reveal their identity in the feedback process. The Dean (Academics) initiates and concludes the feedback collection through his office. The feedback is collected from the student at the end of the semester. All the comments written by the students are shared with the faculty members. This will help the faculty members to understand their strengths and weaknesses. The following three types of feedback are used to enhance the teaching-learning process at the end of every semester.



## Feedback process at SMVITM

Feedback type	Frequency	Feedback collected from	Mode	Purpose
Feedback on the teaching-learning process	Twice in a semester	All students	Online through MIS	To improve TLP
Course end survey	Once a semester	All students	Online through Google form	To improve TLP and CO assessment
Graduate survey	Once in a year	Final year students	Online through Google form	To improve TLP and PO assessment
Student Satisfaction survey	Once in a year	First, Second and Third-year students	Online through Google form	To improve TLP
Feedback on facility	Once in a year	Second and Third-year students	Online through Google form	To improve the institute's facility
Alumni survey	Once in a year	Institute Alumni	Online through Google form	To improve TLP and PEO assessment
Curriculum feedback	Once in a year	Faculty, Students, Alumni, Parents and Employer	Offline	To improve TLP and include value-added courses

**Feedback on the teaching-learning process:** This feedback is very essential to improve the quality of teaching-learning process and the feedback from the students will be taken twice in a semester, namely formative feedback and summative feedback. The **Formative feedback** is gathered in the middle of every semester, generally in the 8<sup>th</sup> week of the ongoing semester and the **Summative Feedback** is taken in the 12<sup>th</sup> week of every ongoing semester. These feedbacks are generally collected online using the institute MIS. The feedback contains 10 questions and the students shall rate on 5 point scale and the students. Once the feedback is collected from the students, the respective Head of the department will share the information with the individual faculty member along with his/her observations. Faculty members with less than 75% feedback will be informed to improve their performance and appreciation to the faculty with 90% above points.

**Course end survey:** The course end survey is collected from the students to know the attainment of the course outcomes. This survey is collected at the end of the semester through a Google form developed by the respective course coordinator. There are two sections in the course-end survey. The first section includes the course objectives, course content, various activities, and assessment conducted in the class and the second section is about the course outcomes. Both the sections are rated on four point scale. The response of the survey is used for the indirect assessment of the course outcomes.

**Student's assessment of faculty, system in place:** Online feedback with questions relevant to teaching-learning process is collected twice in a semester. Performance is measured in terms of the percentage of points obtained for each question. Concerned HOD and the individual faculty are made to know the marks scored in the feedback. HOD congratulates the best-performing faculty members and encourages others to perform better

## 6. Programmes offered:

### Name of the Programmes approved by AICTE:

- Master of Business Administration (MBA) in HR, Finance & Marketing
- BE in Artificial Intelligence & Data Science
- BE in Artificial Intelligence & Machine Learning
- BE in Civil Engineering
- BE in Computer Science & Engineering
- BE in Electronics & Communication Engineering
- BE in Mechanical Engineering

## Names of the Programmes Accredited by NBA:

- BE in Computer Science & Engineering
- BE in Electronics & Communication Engineering

## Status of the Accreditation of the courses:

Total Number of Courses eligible for accreditation: **02**

No. of courses for which applied for Accreditation: **02**

**Status of Accreditation:** Two Engineering programmes Accredited by NBA valid till 30 June 2024

Course	Number of seats	Duration	Cut off rank for last three years		
			2023 Highest to lowest	2022 Highest to lowest	2021 Highest to lowest
Master of Business Administration (MBA)	60	2 years		---	---
BE in Artificial Intelligence & Data Sc.	60	4 Years	47361-80075	45488-45634	48062-55198
Artificial Intelligence & Machine Learning	60	4 Years	56179-80115	54781-55594	41340-48924
Civil Engineering	30	4 Years	171534-179534	130509-170853	175889-175889
Computer Science & Engineering	180	4 Years	35131-39746	29245-29569	25979-31802
Electronics & Communication Engg	120	4 Years	78158-195051	74274-78218	70219-76166
Mechanical Engineering	30	4 Years	183196-183196	168593-168593	174397-174141

## 7. Faculty

### Profile of the Faculty Members

- [Master of Business Administration](https://sode-edu.in/sode-faculty/?dept_id=26876): [https://sode-edu.in/sode-faculty/?dept\\_id=26876](https://sode-edu.in/sode-faculty/?dept_id=26876)
- [Artificial Intelligence & Data Science](https://sode-edu.in/sode-faculty/?dept_id=23988): [https://sode-edu.in/sode-faculty/?dept\\_id=23988](https://sode-edu.in/sode-faculty/?dept_id=23988)
- [Artificial Intelligence & Machine Learning](https://sode-edu.in/sode-faculty/?dept_id=23992): [https://sode-edu.in/sode-faculty/?dept\\_id=23992](https://sode-edu.in/sode-faculty/?dept_id=23992)
- [Civil Engineering](https://sode-edu.in/sode-faculty/?dept_id=177): [https://sode-edu.in/sode-faculty/?dept\\_id=177](https://sode-edu.in/sode-faculty/?dept_id=177)
- [Computer Science and Engineering](https://sode-edu.in/sode-faculty/?dept_id=41): [https://sode-edu.in/sode-faculty/?dept\\_id=41](https://sode-edu.in/sode-faculty/?dept_id=41)
- [Electronics and Communication Engineering](https://sode-edu.in/sode-faculty/?dept_id=1058): [https://sode-edu.in/sode-faculty/?dept\\_id=1058](https://sode-edu.in/sode-faculty/?dept_id=1058)
- [Mechanical Engineering](https://sode-edu.in/sode-faculty/?dept_id=47): [https://sode-edu.in/sode-faculty/?dept\\_id=47](https://sode-edu.in/sode-faculty/?dept_id=47)
- [Chemistry](https://sode-edu.in/sode-faculty/?dept_id=16999): [https://sode-edu.in/sode-faculty/?dept\\_id=16999](https://sode-edu.in/sode-faculty/?dept_id=16999)
- [Physics](https://sode-edu.in/sode-faculty/?dept_id=17004): [https://sode-edu.in/sode-faculty/?dept\\_id=17004](https://sode-edu.in/sode-faculty/?dept_id=17004)
- [Mathematics](https://sode-edu.in/sode-faculty/?dept_id=17002): [https://sode-edu.in/sode-faculty/?dept\\_id=17002](https://sode-edu.in/sode-faculty/?dept_id=17002)

## Profile of the Principal



Name	Dr. Thirumaleshwara Bhat
Date of Birth	04/11/1965
Unique ID	1-2914507333
Educational Qualification	B.E, M Tech., Ph D.,
Work Experience	
Teaching	33 years
Research	16 years (including teaching)
Area of Specialization	Tribology of Composite Materials
Courses taught at Under Graduate	Machine Design, Operations Research, Mechanics of Machines
Research Guidance No. of research scholars	
• Master (Completed)	3
• Ph. D (Completed / ongoing)	8
No. of papers published	National journals: 02 International Journals: 20 National Conference: 14 International Conference: 6
Research publications	22

## 8. Fee Structure

Total College Fee	Admission through KEA (Govt seats)	Rs. 1,07,265 (All branches)
	Management quota seats	CE and ME- 98,984 ECE – 1,50,610 AI & DS and AI & ML– 1,90,610 CSE- Rs. 2,10,610
	COMEDK seats	Rs. 2,07,546 (All branches)
Schedule for payment of fee	Soon after the allotment of the seat for First-year students and Before reopening of Odd sem. from II year onwards	

\*fee includes the University Registration Fee

## No. of Fee waivers granted with amount and name of students admitted under AICTE supernumerary quota during 2023-24

Sl. No	Name of the student	CET rank	Branch	Fee
1	K Pradyumna	13754	AI-DS	31,360.00
2	Riston Crasta	43441	AI-DS	31,360.00
3	Vaishnavi Bhat	43797	AI-DS	31,360.00
4	Chethan U M	35994	AI-ML	31,360.00
5	Rashmitha	34148	AI-ML	31,360.00
6	Sinchana	51059	AI-ML	31,360.00
7	Ananya	6343	CS & E	31,360.00

8	C Vignesh Kumar	19095	CS & E	31,360.00
9	Nikitha	9950	CS & E	31,360.00
10	Nimishamba M	16725	CS & E	31,360.00
11	Ravikumar	16575	CS & E	31,360.00
12	Sathyendra Bhat	18701	CS & E	31,360.00
13	Shrija	13680	CS & E	31,360.00
14	Thanvi D Acharya	8219	CS & E	31,360.00
15	V Suhaan Acharya	16153	CS & E	31,360.00
16	Moolya Pratiksha Shekhar	34177	E&C	31,360.00
17	Pooja	46673	E&C	31,360.00
18	Rahul Prabhu	53643	E&C	31,360.00
19	Rahul R Rao	14301	E&C	31,360.00
20	Raksha Poojari	45394	E&C	31,360.00
21	Shrilekha	23304	E&C	31,360.00
22	Bharath	28297	Mechanical	31,360.00
23	Sukanya	65795	Mechanical	31,360.00

**The number of scholarships offered by the institution and its supporters, duration, and amount (2023-24) are as follows:**

<b>Name of the Scholarship</b>	<b>No. of Students</b>	<b>Amount (Rs)</b>
Vishwavallabha Theertha Swamiji SCHOLARSHIP	180	8377466
Proficiency Prizes From The Institute	15	150000
Gowthama Foundation	9	54000
Madhwa Vadiraja Prashasthi -Best Outgoing (Boy) Award	1	10000
Madhwa Vadiraja Prashasthi -Best Outgoing (Girl) Award	1	10000
Madwa Vadiraj Best Student Award	2	20000
Samarpana Charitable Trust	2	10000
Sulochana R Kalamdhani	1	1000
Vidya Poshak Scholarship (Yakshagaana Kalaranga)	18	159000
Sitaram Jindal Foundation	40	558900
Ramakrishna Mission Ashrama	3	18000
Smt Tonse Padmavathiamma & Sri Subanna P Udipi Memorial Trust	16	160000
Hayavadana Prashasthi 2022-23 Instituted by Dr. Madhusudhan Atre Bangalore	1	10000
Hayavadana Prashasthi 2022-23 Instituted by Mr. Chinnayya Accenture in Australia	1	10000
PHANEESH RAO	1	25000
GURU NARSIMHA TAMPLE SALIGRAMA	10	970940
Sujnana Nidhi Scholarship (1000*10 months)	100	1000000
<b>TOTAL</b>	<b>401</b>	<b>11544306</b>

## 9. Admission

No. of Seats sanctioned with the year of approval: <https://sode-edu.in/aicte-approval-letters/>

Number of students admitted under various categories in last three years

Year	Sanctioned Intake*	Government seats**	Management Admissions	Total
2023-24	480	208	238	446
2022-23	480	204	232	436
2021-22	480	183	177	360

\*excluding 5% seats of SNQ \*\*including 5% SNQ

Number of applications received during last three years for admission under Management quota and number of students admitted

Year	Applications received	No. of students admitted
2023-24	332	238
2022-23	285	232
2021-22	182	177

## 10. Admission Procedure

Following are the guidelines for the candidates seeking admission at SMVITM. Admission to First Year Program: Admission is granted in accordance with the rules and regulations enforced by the All India Council for Technical Education (AICTE), New Delhi and Govt. of Karnataka (GOK) from time to time.

### The eligibility to get admission to engineering programs:

The candidate should have passed in 2nd PUC / 12th Std. with English as one of the languages and obtained a minimum of 45% marks in aggregate in Physics and Mathematics along with Chemistry / Biotechnology / Biology / Electronics / Computer as the third subject. For SC, ST, Cat-1, 2A, 2B, 3A & 3B category candidates of Karnataka, the minimum percentage of marks to get the engineering admission is 40%.

Aspiring students shall take up the Common Entrance Test (CET) conducted by the Karnataka Examinations Authority (KEA) and get admitted through the KEA counseling process. The details about the Common Entrance Test and KEA counseling process will be notified by the GOK in all leading newspapers. A few management seats are also available in the institution. The students seeking management seats shall meet the college authorities.

### Lateral Admission to Second Year Program for Diploma/B.Sc. candidates:

The students who wish to join the second-year program through lateral entry shall follow the KEA norms for lateral admissions. The Successful Diploma / B. Sc students are eligible to get admitted to the second year of Engineering through Lateral Admission. Such candidates should have passed a three-year diploma course from an AICTE-approved institution with a minimum of 45% marks in aggregate in the appropriate branch of Engineering / Technology (40% marks for SC, ST, Cat-1, 2A, 2B, 3A & 3B category candidates).

OR

Passed B. Sc Degree from a UGC recognized University with a minimum of 45% marks in aggregate (40% marks for SC, ST, Cat-1, 2A, 2B, 3A & 3B category candidates of Karnataka) and passed 12th Std. with Mathematics as one of the subjects.

## Criteria and weightage for admission

### Submission of Application form:

Candidates who wish to join the Institute can visit the institution and submit the application form. The application form costs Rs. 2000/- . The application form can also be obtained through post by paying an amount of Rs 2100.00 (Rs 2000 + Rs 100 towards postal expenses) by a DD (in favor of "Shri Madhwa Vadiraja Institute of Technology & Management" Payable at Udupi.) or through NEFT and provide us the Address and Mobile Number through an email to [info@sode-edu.in](mailto:info@sode-edu.in).

### Bank details for making payment

Bank Name: HDFC Bank

Branch: Shirva

A/c Type: CURRENT

A/c Name: SHRI MADHWA VADIRAJA INSTITUTE OF TECHNOLOGY & MANAGEMENT

A/c number: 50100303818541

IFSC: HDFC0009540

### Government seat allocation:

Students seeking Government seats shall attend the Common Entrance Test conducted by the Karnataka Examination Authority. For more details about the admission, the candidate is advised to visit the website [www.kea.kar.nic.in](http://www.kea.kar.nic.in)

### COMEDK seat allocation:

The institute offers 30% of the UG program seats in each program through COMEDK. The student seeking a COMEDK seat shall attend the Common Entrance Test conducted by the COMEDK. For more details about the admission, the candidate is advised to visit the website [www.comedk.org](http://www.comedk.org)

### Management seat allocation:

The institute admits 25% of the UG seats in each program through management quota based on the merit list prepared after the institute level entrance test.

- Date of inviting application from : 23 April 2023
- Last date for the submission of application form : 10 May 2023
- Entrance test date (offline) : 14 May 2023
- Announcement of merit list (institute website) : 16 May 2023
- Last date for admission : 31 October 2023
- Last date for closing the admission : 31 October 2023

## 11. List of applicants (2023-24):

Sl. No	Name of the candidate	Program	% marks in qualifying exam
1.	Anjan N Shetty	AI-DS	55.16 %
2.	Aparna Anil Mahale	AI-DS	85%
3.	Avish Kumar	AI-DS	66.60 %
4.	Bhoomika Naik	AI-DS	78.83 %
5.	Chaya K Shetty	AI-DS	89.83 %
6.	Chirag	AI-DS	90.30 %
7.	Deeksha S	AI-DS	73.00 %
8.	Deepali K Salian	AI-DS	56.66 %
9.	Dhrithi Karkera	AI-DS	68.42 %
10.	Fathima Thasneem	AI-DS	79.88 %
11.	Hitesh A	AI-DS	73.00%
12.	Hithaish K R	AI-DS	75.00 %
13.	Mithul Bynoor	AI-DS	80.50 %
14.	Mohammed Adnan	AI-DS	79.83 %
15.	Nithya K Bhat	AI-DS	92.50 %
16.	Pavana	AI-DS	80.30 %
17.	Poojary Bhusan Bhaskar	AI-DS	66%
18.	Poorvika Priya S	AI-DS	81%
19.	Pragathi Shetty	AI-DS	77.50 %
20.	Prarthana Kamath K	AI-DS	81.83 %
21.	Rithikh Shenoy	AI-DS	80.83 %
22.	Sandeep R Jois	AI-DS	83.83 %
23.	Sanjay R Jois	AI-DS	54%
24.	Satwik S Bhat	AI-DS	91.50 %
25.	Shivani Sadnand Salian	AI-DS	57.83 %



26.	Shreekiran Bhat	AI-DS	71.80 %
27.	Shreya S Naik	AI-DS	93.16 %
28.	Srajan	AI-DS	52%
29.	Srajan (Subraya Acharya)	AI-DS	54.66 %
30.	Sudarshan Navada	AI-DS	82.16%
31.	Sujan S Poojary	AI-DS	71.50 %
32.	Tanusha R Mestha	AI-DS	71%
33.	U Pradyumna Upadhyaya	AI-DS	70.80 %
34.	Pruthvik	AI-DS	86%
35.	R N H Shetty	AI-DS	85%
36.	Ashley Fernades	AI-DS	88%
37.	Chandana	AI-DS	89%
38.	K Kamakshi G Nayak	AI-DS	92%
39.	Shubrath Shetty	AI-DS	91%
40.	Ayush	AI-DS	94.33 %
41.	Akash	AI-ML	82%
42.	Anagha V Bhat	AI-ML	85.33 %
43.	Ananya N Salian	AI-ML	56%
44.	Ananya Bhat	AI-ML	80.66 %
45.	Anjali	AI-ML	79.33 %
46.	Anshika	AI-ML	74.83 %
47.	Ashwin Shenoy K	AI-ML	79%
48.	Harshith N Kunder	AI-ML	67%
49.	Herschel D Mello	AI-ML	72%
50.	Kishan G K	AI-ML	82%
51.	Krithika	AI-ML	68%
52.	M Ameesh Rao	AI-ML	59.33 %
53.	Manoj	AI-ML	69.60 %
54.	Mohammed Fahad Habeebulla	AI-ML	71.16 %
55.	Poornananda	AI-ML	65.83 %
56.	Priyanka	AI-ML	75.33 %
57.	Rahul Shettigar	AI-ML	70.60 %
58.	Rakshan S Suvarna	AI-ML	94.66 %
59.	Ranya B R	AI-ML	88.60 %
60.	Sameksha	AI-ML	83.60 %
61.	Sanjana P S	AI-ML	85.10 %
62.	Shreyas S Poojari	AI-ML	52%
63.	Shri Pranav G K	AI-ML	68%
64.	Sinchana Ganapati Devadiga	AI-ML	91%
65.	Sudarshan Bhat	AI-ML	70%
66.	Taruna	AI-ML	59.83 %
67.	Umesh H	AI-ML	66.66 %
68.	Vamshika Shireesh Kumar Kunder	AI-ML	79.50 %
69.	Yashwanth V	AI-ML	75%
70.	Aishwarya	AI-ML	70%
71.	Ayushi Rastogi	AI-ML	90%
72.	Muskhan	AI-ML	57%
73.	Rajath Nayak	AI-ML	72%
74.	Manish	AI-ML	83%
75.	Ramitha	AI-ML	81%
76.	Shivadatta	AI-ML	83%
77.	Sampath Kumar	Civil Engg	58%
78.	Arjun D Poojary	Civil Engg	48.83 %
79.	Gaurav C Shetty	Civil Engg	59.16 %
80.	Prashanth Vishwanath	Civil Engg	54.83 %
81.	Prashul P Poojary	Civil Engg	59.16 %
82.	Raju Hanamantappa Bennur	Civil Engg	48.83 %

83.	Sampath Kumar	Civil Engg	66.30 %
84.	Vinayak Poojari	Civil Engg	58%
85.	Reyon Fernandes	CS & Engg	72%
86.	Akshitha R Salian	CS & Engg	89%
87.	Ankur A Prabhu	CS & Engg	70%
88.	Divyashree	CS & Engg	78%
89.	Koushik	CS & Engg	67%
90.	Rahul P Santhosh	CS & Engg	79%
91.	Rohith	CS & Engg	83%
92.	Adarsh Dinesh Devadiga	CS & Engg	83.67 %
93.	Afeefa Noor	CS & Engg	76.50 %
94.	Ananya (D/O Rajesh Shet)	CS & Engg	87.66 %
95.	Anish K	CS & Engg	83.33 %
96.	Asmeer	CS & Engg	53.33 %
97.	Avril Fiona	CS & Engg	66%
98.	B. Sanjeet Shetty	CS & Engg	82%
99.	Bhavana. Shantappa. Devihosu	CS & Engg	76%
100.	Boaz Santhosh Kumar	CS & Engg	69%
101.	Chaitra K	CS & Engg	85.50 %
102.	Chirag S Poojary	CS & Engg	73.40 %
103.	Dashamee	CS & Engg	87.83 %
104.	Dhanya B Shetty	CS & Engg	74.60 %
105.	Fathimath Ansira	CS & Engg	68.66 %
106.	Goutami Shivananda Shet	CS & Engg	85%
107.	Gowri Nayak	CS & Engg	75.33 %
108.	Guruganesh N Bhat	CS & Engg	82.50 %
109.	Harshitha D	CS & Engg	74.17%
110.	Honey Rao	CS & Engg	88.33 %
111.	Joysten Quadras	CS & Engg	63.20 %
112.	Kashish S Salian	CS & Engg	82%
113.	Kunal Kamalaksha Prabhu	CS & Engg	65.66%
114.	Madan	CS & Engg	70.16 %
115.	Mandikar Rohan Anil	CS & Engg	59%
116.	Manoj Kumar	CS & Engg	85.83 %
117.	Manvitha	CS & Engg	76%
118.	Manvitha Pai K	CS & Engg	78.33 %
119.	Manya	CS & Engg	93%
120.	Manya Patkar	CS & Engg	71.60 %
121.	Mohammed Nahal Rahiman	CS & Engg	79.60 %
122.	Mohammed Waqas	CS & Engg	63%
123.	Mohd. Arman	CS & Engg	93.16 %
124.	Mohit Raj K Kotian	CS & Engg	76.50 %
125.	Moulya .M	CS & Engg	78.16 %
126.	N Namana Adiga	CS & Engg	78.83 %
127.	Nikhil G Shetty	CS & Engg	93.30 %
128.	Nishith Ramesh Poojary	CS & Engg	75.66 %
129.	Nishmitha	CS & Engg	66%
130.	Nithesh G Shetty	CS & Engg	91.80 %
131.	Parineeta G.P	CS & Engg	80.81 %
132.	Pavan Sudheendra Kulakarni	CS & Engg	62.50 %
133.	Poorvik Achary	CS & Engg	74.50 %
134.	Pradyumna Shettigar	CS & Engg	85%
135.	Prajwal Shanbhag	CS & Engg	77.33 %
136.	Pratham . P . Marakala	CS & Engg	71.50 %
137.	Pratham Shanbhag	CS & Engg	57.80 %
138.	Pratheeksha P Rao	CS & Engg	87.80 %
139.	Prithesh R Shetty	CS & Engg	73.50 %

140.	Priya Lakshmi	CS & Engg	87.83 %
141.	Pruthvi Shetty	CS & Engg	59.40 %
142.	Rakshita Sathish Raykar	CS & Engg	82.35 %
143.	Rakshitha S Sheregar	CS & Engg	82%
144.	Rashmi Salvankar	CS & Engg	85.50 %
145.	Rashmitha	CS & Engg	83.16 %
146.	Reynol. D. Souza	CS & Engg	80%
147.	Roshni	CS & Engg	93.33 %
148.	S Sharvari Chatra	CS & Engg	85.33 %
149.	Sahana	CS & Engg	89.16 %
150.	Sahana G G	CS & Engg	88.33%
151.	Sampath	CS & Engg	61.05 %
152.	Sanjana	CS & Engg	66.16 %
153.	Sanvi A Shetty	CS & Engg	74%
154.	Sarah Carmina Almeida	CS & Engg	84%
155.	Shashank Udupa	CS & Engg	69.50 %
156.	Sheregar Shivani Babu	CS & Engg	68.67 %
157.	Shivaraja	CS & Engg	85.16 %
158.	Shreya Takoor	CS & Engg	90.56 %
159.	Shreyas Shetty	CS & Engg	82.66%
160.	Sinchana	CS & Engg	82.33 %
161.	Sinchana Adiga	CS & Engg	77.66 %
162.	Sohan S Salian	CS & Engg	83.83 %
163.	Spandana Ganesh Prasad Aithal	CS & Engg	76%
164.	Steffy Vinny Daniel	CS & Engg	70.35 %
165.	Sudarshan Bhargav Joshi	CS & Engg	58.11 %
166.	Sudhiksha Subhash Poojary	CS & Engg	88.83 %
167.	Supritha	CS & Engg	82.50 %
168.	Swarna	CS & Engg	86.33 %
169.	Swaroop M S	CS & Engg	65.30 %
170.	Swasthi S Nayak	CS & Engg	78.40 %
171.	Swasthik Yesh	CS & Engg	70.60 %
172.	Trisha S Shetty	CS & Engg	78%
173.	V Seetharama Mugeraya	CS & Engg	86.50 %
174.	Vaishnavi. V	CS & Engg	88.35 %
175.	Varnitha	CS & Engg	82%
176.	Vighnesh	CS & Engg	80%
177.	Vinayaka U Pai	CS & Engg	67.66 %
178.	Vinesh V Shetty	CS & Engg	81.16 %
179.	Vishwajit Shetty	CS & Engg	60.33 %
180.	Yash Shetty	CS & Engg	85.33 %
181.	Rashmitha	CS & Engg	97%
182.	Divya J K	CS & Engg	90%
183.	Adarsh	CS & Engg	75%
184.	Adarsh J	CS & Engg	91%
185.	Adithi	CS & Engg	87%
186.	Adithya R Rao	CS & Engg	85%
187.	Aisha Thuba	CS & Engg	92%
188.	Amrutathma Shetty	CS & Engg	72%
189.	Ananya R T	CS & Engg	93%
190.	Anchan Mogapadi	CS & Engg	84%
191.	Anirudh P Anand	CS & Engg	67%
192.	Anjali	CS & Engg	80%
193.	Ankitha	CS & Engg	91%
194.	Anusha	CS & Engg	88%
195.	Anushri	CS & Engg	99%
196.	Ashwin	CS & Engg	61%

197.	Ashwitha	CS & Engg	75.33 %
198.	Ashwitha	CS & Engg	77%
199.	Ashwitha	CS & Engg	79%
200.	Avish	CS & Engg	45%
201.	B Milan Shankar Bhat	CS & Engg	96%
202.	Chetan V Kotian	CS & Engg	87%
203.	Deepak	CS & Engg	90%
204.	Deepak Nayak	CS & Engg	81%
205.	Dhanya	CS & Engg	91.67 %
206.	Disha G Kotian	CS & Engg	83%
207.	Gowri	CS & Engg	93%
208.	Isra Irshad	CS & Engg	62%
209.	Jenkhar	CS & Engg	52%
210.	K Vijeth Naik	CS & Engg	97%
211.	Karthik S	CS & Engg	77%
212.	Kavya	CS & Engg	86%
213.	Krithika	CS & Engg	90%
214.	Lavanya	CS & Engg	84%
215.	Lochan Panduranga Havalimane	CS & Engg	95%
216.	Mansi	CS & Engg	76%
217.	Manvitha S	CS & Engg	92%
218.	Milanraj	CS & Engg	69%
219.	Nasreen Taj	CS & Engg	64%
220.	Neha Mayya	CS & Engg	71%
221.	Nishma	CS & Engg	91%
222.	Poorvikalyana	CS & Engg	96%
223.	Pranesh Kr	CS & Engg	86%
224.	Prasad	CS & Engg	84%
225.	Prashanth Kulala	CS & Engg	92%
226.	Prathibha	CS & Engg	72.66 %
227.	Rahul	CS & Engg	82.50 %
228.	Rakshitha	CS & Engg	80%
229.	Ranjini Hegde	CS & Engg	78%
230.	Reena	CS & Engg	94%
231.	Sandesh	CS & Engg	75%
232.	Sania	CS & Engg	58%
233.	Shabharish Shetty	CS & Engg	69%
234.	Shahshank	CS & Engg	71%
235.	Shinitha	CS & Engg	86%
236.	Shivaprasad	CS & Engg	76%
237.	Shreya Nayak	CS & Engg	86%
238.	Shriya Shetty	CS & Engg	92%
239.	Sindhu	CS & Engg	76%
240.	Sooraj Bhagavath	CS & Engg	85%
241.	Srujan S Devadiga	CS & Engg	65%
242.	Stanson	CS & Engg	93%
243.	Sumukh Nayak	CS & Engg	63%
244.	Sushanth	CS & Engg	96%
245.	Uttam	CS & Engg	91%
246.	V Suhan Acharya	CS & Engg	96%
247.	Varshini	CS & Engg	96%
248.	Vigneshwara	CS & Engg	91%
249.	Vinutha	CS & Engg	82%
250.	Vivek Sateesh Poojari	CS & Engg	92%
251.	Sukanya	CS & Engg	85%
252.	Admanirfan Rahiman	CS & Engg	61%
253.	Ayush Vijaya Kumar Shetty	CS & Engg	98%

254.	Pavithra	CS & Engg	64%
255.	Abhishek Pinto	E & C Engg	85%
256.	Prathviraj P Poojary	E & C Engg	67%
257.	Abhishree	E & C Engg	68%
258.	Adarsh Kamath	E & C Engg	78%
259.	Adithya S Bangera	E & C Engg	54.83 %
260.	Amruta P Dabade	E & C Engg	72.50 %
261.	Anush S Shetty	E & C Engg	85.83 %
262.	Bharath G Devadiga	E & C Engg	68.83 %
263.	Bhavana M	E & C Engg	84.66 %
264.	Bhavik G Alva	E & C Engg	57%
265.	Bhoomika	E & C Engg	79.66 %
266.	Chirayu A Shetty	E & C Engg	81.60 %
267.	Dheeraj Achar H	E & C Engg	82.67 %
268.	Goutham	E & C Engg	79.33 %
269.	K Shravya Tantry	E & C Engg	85%
270.	Karthik	E & C Engg	66.83 %
271.	Karthik Sooryanarayana Amin	E & C Engg	74.60 %
272.	M Pradeep Kumar	E & C Engg	53.33 %
273.	M Rakshitha	E & C Engg	81%
274.	Mansi R Rao	E & C Engg	76 %
275.	Manvith M Poojary	E & C Engg	70.50 %
276.	Meghana Rajiv	E & C Engg	89.80 %
277.	Nithesh Kumar	E & C Engg	78.50 %
278.	Palaksha Bhat	E & C Engg	83.66 %
279.	Pavan K B	E & C Engg	75.86 %
280.	Pavan Mg	E & C Engg	74.83 %
281.	Pranathi Adiga	E & C Engg	75.80 %
282.	Prathviraj P Poojary	E & C Engg	70.83 %
283.	Preetam Gugalottar	E & C Engg	66.16 %
284.	Princita Shifali Menezes	E & C Engg	78%
285.	Rithik Bangera	E & C Engg	69.33 %
286.	Sadhana K Joshi	E & C Engg	82.83 %
287.	Sagar	E & C Engg	65.33 %
288.	Sangvi K	E & C Engg	71.40 %
289.	Sanjana Rajesh Bhomkar	E & C Engg	77.16 %
290.	Sanjay	E & C Engg	77.60 %
291.	Sharanya	E & C Engg	86.50 %
292.	Shashank S	E & C Engg	82.30 %
293.	Shashank S/O Umesh	E & C Engg	71.83%
294.	Shraddha S Poojary	E & C Engg	84.83 %
295.	Shreenidhi	E & C Engg	55.17 %
296.	Shreesha Kamath	E & C Engg	62.60 %
297.	Shrinidhi S	E & C Engg	57%
298.	Soujanya	E & C Engg	75.30%
299.	Suvarna Pranith Jaya	E & C Engg	50%
300.	Thanvi H S	E & C Engg	87.33%
301.	Tilak S Shettigar	E & C Engg	74%
302.	Trishul S Acharya	E & C Engg	65.30 %
303.	U Anusha Kumari	E & C Engg	68%
304.	Vijayalaxmi S Poojary	E & C Engg	75%
305.	Vikram R K	E & C Engg	76.66 %
306.	Vinay Kumar	E & C Engg	54%
307.	Deeksha	E & C Engg	72%
308.	Disha S Salian	E & C Engg	64%
309.	Rahul R Rao	E & C Engg	96%
310.	Sairaj	E & C Engg	88%

311.	Abhay Shetty	Mechanical Engg	67.16 %
312.	Abhishek K N	Mechanical Engg	75.16 %
313.	Ananya	Mechanical Engg	74.16 %
314.	Greeshma	Mechanical Engg	83%
315.	Kaushik C Salian	Mechanical Engg	61%
316.	Mohammad Naimuddin	Mechanical Engg	56.33 %
317.	Mohammed Arham	Mechanical Engg	77%
318.	Mohammed Safwan	Mechanical Engg	58%
319.	Muyyiddin Dawood Hakkim	Mechanical Engg	73%
320.	Pawan Kumar	Mechanical Engg	57%
321.	Rakshith Poojari	Mechanical Engg	59%
322.	Sahil G Poojary	Mechanical Engg	76%
323.	Sanjana	Mechanical Engg	60%
324.	Shetty Darshan Pradeep	Mechanical Engg	87%
325.	Shrishank	Mechanical Engg	75%
326.	Srajan S Kunder	Mechanical Engg	76%
327.	Suhan	Mechanical Engg	56%
328.	Vaibhav C Mendon	Mechanical Engg	62%
329.	Vardhan D	Mechanical Engg	85%
330.	Zeehan Jafrulla Abdul Khadir	Mechanical Engg	48%
331.	Nimishambha	Mechanical Engg	95%
332.	Bharath	Mechanical Engg	95%

## 12. Results of Admission under Management Seats/Vacant Seats

### The management seat allotment details

Sl. No	Name of the candidate	Program	% marks in qualifying exam	Merit (Rank)
1.	Aparna Anil Mahale	AD	85%	399
2.	Bhoomika Naik	AD	78.83%	298
3.	Chaya K Shetty	AD	89.83%	178
4.	Deeksha S	AD	73%	395
5.	Pavana	AD	80.30%	266
6.	Poojary Bhusan Bhaskar	AD	66%	8
7.	Prarthana Kamath K	AD	81.83%	264
8.	Rithikh Shenoy	AD	80.83%	253
9.	Sandeep R Jois	AD	83.83%	249
10.	Satwik S Bhat	AD	91.50%	134
11.	Shreya S Naik	AD	93.16%	60
12.	Srajan	AD	52%	377
13.	Srajan N Nairy	AD	50%	375
14.	Sudarshan Navada	AD	82.16%	239
15.	Sujan S Poojary	AD	71.50%	422
16.	Akash	AI-ML	82%	474
17.	Ananya Bhat	AI	80.66%	473
18.	Ashwin Shenoy K	AI	79%	470
19.	Herschel D Mello	AI	72%	412
20.	Krithika	AI	68%	280
21.	M Ameesh Rao	AI	59.33%	74



22.	Manoj	AI	69.60%	446
23.	Poornananda	AI	65.83%	79
24.	Ranya B R	AI	88.60%	332
25.	Sameksha	AI	83.60%	464
26.	Sanjana P S	AI	85.10%	458
27.	Shreyas S Poojari	AI	52%	378
28.	Sudarshan Bhat	AI	70%	440
29.	Umesh H	AI	66.66%	47
30.	Yashwanth V	AI	75%	438
31.	Afeefa Noor	CS	76.50%	355
32.	Ananya (D/O Rajesh Shet)	CS	87.66%	116
33.	Avril Fiona	CS & Engg	66%	39
34.	Chirag S Poojary	CS & Engg	73.40%	396
35.	Gagana Nayak	CS & Engg	62.50%	3
36.	Gowri Nayak	CS & Engg	75.33%	347
37.	Guruganesh N Bhat	CS & Engg	82.50%	286
38.	Honey Rao	CS & Engg	88.33%	346
39.	Khushi	CS & Engg	91.33%	147
40.	Kunal Kamalaksha Prabhu	CS & Engg	65.66%	69
41.	Maithri Shetty	CS & Engg	88.33%	344
42.	Mandikar Rohan Anil	CS & Engg	59%	193
43.	Mohammed Waqas	CS & Engg	63%	67
44.	Mohd. Arman	CS & Engg	93.16%	66
45.	Mohit Raj K Kotian	CS & Engg	76.50%	340
46.	Moulya .M	CS & Engg	78.16%	272
47.	Nikhil G Shetty	CS & Engg	93.30%	52
48.	Nishith Ramesh Poojary	CS & Engg	75.66%	339
49.	Nithesh G Shetty	CS & Engg	91.80%	125
50.	Pavan Sudheendra Kulakarni	CS & Engg	62.50%	65
51.	Poorvik Achary	CS & Engg	74.50%	362
52.	Pradyumna Shettigar	CS & Engg	85%	428
53.	Prajwal Shanbhag	CS & Engg	77.33%	335
54.	Pratham Shanbhag	CS & Engg	57.80%	188
55.	Rahul	CS & Engg	86.50%	104
56.	Rakshitha S Sheregar	CS & Engg	82%	256
57.	Rashmitha	CS & Engg	83.17%	43
58.	Rohith Rao	CS & Engg	62.67%	427
59.	Sampath	CS & Engg	61.05%	40
60.	Sanjana	CS & Engg	66.16%	26
61.	Sanvi A Shetty	CS & Engg	74%	361
62.	Shashank Udupa	CS & Engg	69.50%	442
63.	Sheregar Shivani Babu	CS & Engg	68.67%	441
64.	Shrajan R S	CS & Engg	56.16%	185

65.	Shreya Takoore	CS & Engg	90.56%	151
66.	Sinchana	CS & Engg	82.33%	95
67.	Sinchana Adiga	CS & Engg	77.66%	242
68.	Sohan S Salian	CS & Engg	83.83%	240
69.	Sudhiksha Subhash Poojary	CS & Engg	88.83%	238
70.	Swaroop M S	CS & Engg	65.30%	31
71.	Swasthik Yesh	CS & Engg	70.60%	432
72.	Varnitha	CS & Engg	82%	228
73.	Vighnesh	CS & Engg	80%	226
74.	Vinayaka U Pai	CS & Engg	67.66%	453
75.	Yash Shetty	CS & Engg	85.33%	160
76.	Arjun D Poojary	Civil Engg	48.83%	398
77.	Gaurav C Shetty	Civil Engg	59.16%	194
78.	Prashanth Vishwanath	Civil Engg	54.83%	386
79.	Prashul P Poojary	Civil Engg	59.16%	189
80.	Raju Hanamantappa Bennur	Civil Engg	48.83%	382
81.	Vadanth Acharya	CIVIL Engg	53.50%	373
82.	Vinayak Poojari	Civil Engg	58%	420
83.	Abhishree	E&C Engg	68%	475
84.	Bhavik G Alva	E&C Engg	57%	196
85.	Chirayu A Shetty	E&C Engg	81.60%	295
86.	Dheeraj Achar H	E&C Engg	82.67%	294
87.	Goutham	E&C Engg	79.33%	289
88.	K Shravya Tantry	E&C Engg	85%	216
89.	Karthik	E&C Engg	66.83%	70
90.	Karthik Sooryanarayana Amin	E&C Engg	74.60%	365
91.	M Rakshitha	E&C Engg	81%	279
92.	Manvith M Poojary	E&C Engg	70.50%	437
93.	Pavan K B	E&C Engg	75.86%	338
94.	Pavan Mg	E&C Engg	74.83%	337
95.	Pranathi Adiga	E&C Engg	75.80%	334
96.	Prathviraj P Poojary	E&C Engg	70.83%	435
97.	Princita Shifali Menezes	E&C Engg	78%	261
98.	Rithik Bangera	E&C Engg	69.33%	443
99.	Sangvi K	E&C Engg	71.40%	426
100.	Sanjana Rajesh Bhomkar	E&C Engg	77.16%	326
101.	Sanjay	E&C Engg	77.60%	408
102.	Sharanya	E&C Engg	86.50%	122
103.	Shraddha S Poojary	E&C Engg	84.83%	208
104.	Shreenidhi	E&C Engg	55.17%	379
105.	Shreesha Kamath	E&C Engg	62.60%	77
106.	Soujanya	E&C Engg	75.30%	320
107.	Suvarna Pranith Jaya	E&C Engg	50%	374

108.	Thanvi H S	E&C Engg	87.33%	93
109.	Trishul S Acharya	E&C Engg	65.30%	22
110.	Vijayalaxmi S Poojary	E&C Engg	75%	316
111.	Vikram R K	E&C Engg	76.66%	315
112.	Vinay Kumar	E&C Engg	54%	372
113.	Mohammed Safwan	Mechanical Engg	58%	191
114.	Rakshith Poojari	Mechanical Engg	59.50%	103
115.	Kaushik C Salian	Mechanical Engg	61%	177
116.	Vaibhav C Mendon	Mechanical Engg	62.33%	168
117.	Ananya	Mechanical Engg	74.16%	370
118.	Shrishank	Mechanical Engg	75%	321
119.	Abhishek K N	Mechanical Engg	75.16%	356

**The vacant seats are allotted to the following waitlisted candidates**

Sl. No	Name of the candidate	Program	% marks in qualifying exam	Merit (Rank)
1.	Anjan N Shetty	AI	55.16%	400
2.	Avish Kumar	AD	66.60%	45
3.	Chirag	AD	90.30%	165
4.	Deepali K Salian	AD	56.66%	195
5.	Dhrithi Karkera	AD	68.42%	469
6.	Fathima Thasneem	AD	79.88%	292
7.	Hitesh A	AD	73%	392
8.	Hithaish K R	AD	75.00%	411
9.	Mithul Bynoor	AD	80.50%	275
10.	Mohammed Adnan	AD	79.83%	274
11.	Poorvika Priya S	AD	81%	265
12.	Pragathi Shetty	AD	77.50%	336
13.	Sanjay R Jois	AD	54%	407
14.	Shivani Sadnand Salian	AD	57.83%	187
15.	Shreekiran Bhat	AD	71.80%	424
16.	Srajan (Subraya Acharya)	AD	54.66%	376
17.	Tanusha R Mestha	AD	71%	421
18.	U Pradyumna Upadhyaya	AD	70.80%	431
19.	Anagha V Bhat	AI	85.33%	452
20.	Ananya N Salian	AI	56%	197
21.	Anjali	AI	79.33%	472
22.	Anshika	AI	74.83%	451
23.	Harshith N Kunder	AI	67%	357
24.	Kishan G K	AI	82%	465
25.	Mohammed Fahad Habeebulla Sahe	AI	71.16%	429
26.	Priyanka	AI	75.33%	444
27.	Rahul Shettigar	AI	70.60%	434
28.	Rakshan S Suvarna	AI	94.66%	27
29.	Shri Pranav G K	AI	68%	405
30.	Sinchana Ganapati Devadiga	AI	91%	140

31.	Taruna	AI	59.83%	5
32.	Vamshika Shireesh Kumar	AI	79.50%	461
33.	Adarsh Dinesh Devadiga	CS & Engg	83.67%	314
34.	Anish K	CS & Engg	83.33%	306
35.	Asmeer	CS & Engg	53.33%	397
36.	B. Sanjeet Shetty	CS & Engg	82%	301
37.	Bhavana. Shantappa. Devihosur	CS & Engg	76%	351
38.	Boaz Santhosh Kumar	CS & Engg	69%	449
39.	Chaitra K	CS & Engg	85.50%	159
40.	Dashamee	CS & Engg	87.83%	112
41.	Dhanya B Shetty	CS & Engg	74.60%	367
42.	Fathimath Ansira	CS & Engg	68.66%	448
43.	Goutami Shivananda Shet	CS & Engg	85%	290
44.	Harshitha D	CS & Engg	74.17%	366
45.	Joysten Quadras	CS & Engg	63.20%	12
46.	Kashish S Salian	CS & Engg	82%	281
47.	Madan	CS & Engg	70.16%	447
48.	Manoj Kumar	CS & Engg	85.83%	146
49.	Manvitha	CS & Engg	76%	430
50.	Manvitha Pai K	CS & Engg	78.33%	277
51.	Manya	CS & Engg	93%	68
52.	Manya Patkar	CS & Engg	71.60%	389
53.	Mohammed Nahal Rahiman	CS & Engg	79.60%	273
54.	N Namana Adiga	CS & Engg	78.83%	271
55.	Nishmitha	CS & Engg	66%	2
56.	Parineeta G.P	CS & Engg	80.81%	267
57.	Pratham . P . Marakala	CS & Engg	71.50%	385
58.	Pratheeksha P Rao	CS & Engg	87.80%	107
59.	Prithesh R Shetty	CS & Engg	73.50%	384
60.	Priya Lakshmi	CS & Engg	87.83%	105
61.	Pruthvi Shetty	CS & Engg	59.40%	83
62.	Rakshita Sathish Raykar	CS & Engg	82.35%	258
63.	Rashmi Salvankar	CS & Engg	85.50%	142
64.	Rashmi V Poojary	CS & Engg	85.16%	171
65.	Reynol. D. Souza	CS & Engg	80%	254
66.	Roshni	CS & Engg	93.33%	49
67.	S Sharvari Chatra	CS & Engg	85.33%	163
68.	Sagar S	CS & Engg	79.50%	251
69.	Sahana	CS & Engg	89.16%	250
70.	Sahana G G	CS & Engg	88.33%	329
71.	Sarah Carmina Almeida	CS & Engg	84%	425
72.	Shainitha	CS & Engg	87.50%	98
73.	Shreyas Shetty	CS & Engg	82.66%	245
74.	Spandana Ganesh Prasad Aithal	CS & Engg	76%	423
75.	Steffy Vinny Daniel	CS & Engg	70.35%	433
76.	Sudarshan Bhargav Joshi	CS & Engg	58.11%	183
77.	Supritha	CS & Engg	82.50%	235
78.	Swarna	CS & Engg	86.33%	119

79.	Swasthi S Nayak	CS & Engg	78.40%	233
80.	Trisha S Shetty	CS & Engg	78%	229
81.	V Seetharama Mugeraya	CS & Engg	86.50%	118
82.	Vaishnavi. V	CS & Engg	88.35%	317
83.	Vinesh V Shetty	CS & Engg	81.16%	225
84.	Vishwajit Shetty	CS & Engg	60.33%	14
85.	Adarsh Kamath	E&C Engg	78%	313
86.	Adithya S Bangera	E&C Engg	54.83%	402
87.	Amruta P Dabade	E&C Engg	72.50%	419
88.	Anush S Shetty	E&C Engg	85.83%	148
89.	Bharath G Devadiga	E&C Engg	68.83%	456
90.	Bhoomika	E&C Engg	79.66%	299
91.	M Pradeep Kumar	E&C Engg	53.33%	391
92.	Mansi R Rao	E&C Engg	76%	343
93.	Meghana Rajiv	E&C Engg	89.80%	53
94.	Nithesh Kumar	E&C Engg	78.50%	269
95.	Palaksha Bhat	E&C Engg	83.66%	268
96.	Preetam Gugalottar	E&C Engg	66.16%	17
97.	Sadhana K Joshi	E&C Engg	82.83%	252
98.	Sagar	E&C Engg	65.33%	42
99.	Shashank S	E&C Engg	82.30%	248
100.	Shashank S/O Umesh	E&C Engg	71.83%	415
101.	Shrinidhi S	E&C Engg	57%	184
102.	U Anusha Kumari	E&C Engg	68%	462
103.	Zeehan Jafrulla Abdul Khadir	Mechanical Engg	48.16%	371
104.	Mohammad Naimuddin	Mechanical Engg	56.33%	192
105.	Sanjana	Mechanical Engg	60.50%	141
106.	Muyyiddin Dawood Hakkim	Mechanical Engg	73.16%	387
107.	Sahil G Poojary	Mechanical Engg	76.50%	328
108.	Mohammed Arham	Mechanical Engg	77.66%	341
109.	Greeshma	Mechanical Engg	83%	287
110.	Vardhan D	Mechanical Engg	85.50%	161
111.	Shivaraja	CS & Engg	85.16%	170
112.	Suhan	Mechanical Engg	56%	181
113.	Pawan Kumar	Mechanical Engg	57.33%	190
114.	Abhay Shetty	Mechanical Engg	67.16%	476
115.	Srajan S Kunder	Mechanical Engg	76%	319
116.	P Pramod Rao	AI	64%	18
117.	K. Vijeth. V. Naik	CS & Engg	95.83%	10
118.	Kartik Shivarayappa Yalaganna	CS & Engg	81.76%	282

**Selection team for admission through Management quota:** Principal and the HODs of Physics, Chemistry and Mathematics.

### 13. Information on Infrastructure and other resources Available:

Details of Class Rooms, Tutorial Rooms, Laboratories, Drawing hall and computer center

#### Class Rooms:

Sl. No	Building Number	Building Name	Room Type	Number of Rooms	Total carpet area (m <sup>2</sup> )
1	Block A	Administrative Block	Classrooms	17	1514
2	Block B	E&C Block	Classrooms	6	599
3	Block C	Civil & Mechanical Block	Classrooms	5	475
4	Block G	Library Block	Classrooms	2	315

#### Tutorial Rooms

Sl. No	Building Number	Building Name	Room Type	Number of Rooms	Carpet area (m <sup>2</sup> )
1	Block A	Administrative Block	Tutorial Room	2	88
2	Block B	E&C Block	Tutorial Room	1	34
3	Block C	Civil & Mechanical Block	Tutorial Room	2	90
4	Block G	Library Block	Tutorial Room	1	40

#### Laboratories:

Sl. No	Building Number	Building Name	Room Type	Number of Rooms	Carpet area (m <sup>2</sup> ) / No. of computers
1	Block A	Administrative Block	Laboratory	8	742
2	Block B	E&C Block	Laboratory	7	687
3	Block C	Civil & Mechanical lock	Laboratory	4	538
4	Block F	Laboratory Complex	Laboratory	18	1670
5	Block G	Library Block	Laboratory	1	115

#### CAD Lab

Sl. No	Building Number	Building Name	Room Type	Number of Rooms	Carpet area (m <sup>2</sup> )
1	Block A	Administrative lock	Laboratory	1	107

#### Computer Center:

Sl. No	Building Number	Building Name	Room Type	Number of Rooms	Carpet area (m <sup>2</sup> )
1	Block A	Administrative lock	Computer Lab	1	273

#### Central examination facility, Number of rooms and capacity of each room

28 rooms with a capacity of 30 students in each room

#### Online examination facility with number of nodes, internet bandwidth..etc

All systems are connected to the internet, 570 Nodes with 300 mbps internet bandwidth

#### Computing Facility:

- Internet Bandwidth: 300 Mbps
- Number and configuration of System: 570 (Dual core, i3, and i5 system processors)
- Total number of systems connected by LAN: 570 (All desktop systems)
- Total number of systems connected by WAN: All systems, also 30 Wi-Fi routers to connect laptops



### Major software packages available:

Sl. No.	Name	License / Part No.
1	Windows Server 2008 R2, Std/Ent – Mak B	VQT7Y-WH2QD-3CVJC-2RPKF-6269H
2	Windows Server 2008, Std/Ent Kms B	GR828-PJ39C-MHX6T-PYVWF-GDGMK
3	Windows Server 2008, Std/Ent Mak B	MPWFH-96Y22-FP6PM-RP8TK-44R49
4	Windows Server 2008 R2, Std/Ent Kms B	6KY4B-M7V8D-BD7X9-82Y96-K26YJ
5	Windows Server 2003 R2, X32 Edition	HYK7G-MH6JP-GYH3W-7F6R8-6GPM8
6	WINDOWS 11 Home 55; WINDOWS Professional275	Preloaded
7	Redhat Linux	RHF0377AP-R4
8	Fedora	OPEN SOURCE
9	Ubuntu 22.04	OPEN SOURCE
10	Wisl 8.1 SNGL OLP NL Academic Legalization – 100 Nos.	4HR-00400

### Barrier-free built environment for disabled and elderly persons:

Ramps, Lift, Wheelchairs and accessible toilets are made available for disabled and elderly persons. Also, the admin block is provided with a lift facility.

### Fire and safety certificate:

Issued by Office of the Chief Fire Officer, Karnataka Fire & Emergency Services, Mangaluru Ref No. 15/FSR/DFO/UDP/2023 dated 24-4-2023

### Hostel Facility:

The hostel facility is available for both boys and girls inside the campus. The Institute has aesthetically designed and ergonomically built separate hostels for boys and girls with all modern amenities and provision for recreational activities along with delicious and nutritious vegetarian food. The hostel administration is taken care of full time wardens and a faculty member as the chief warden. Adequate water and power supply is ensured round the clock.

**Capacity of the hostel:** Boys Hostel for 154 students and Girls hostel for 142 students

### Estimated cost of hostel accommodation and food charges:

Room Type	No. of rooms	Hostel Charges per annum (Rs)	Food charges per annum (Rs)
2 sharing	42	43,000.00	37,500.00
3 sharing	70	37,500.00	

### Library:

The institute is a member of VTU E-consortium and the entire e-resource requirements are met through this membership with an annual membership fee of Rs. 1,00,000 per year and the fee for procuring the resources at Rs. 750/- per student per annum and that of PG at Rs. 1500/- per student per annum. The details about the available library books and resources are given below:

Sl. No	Description	Numbers available
01	Volumes (Engineering)	18500
02	Titles (Engineering)	4200
03	Volumes (Management)	309
04	Titles (Management)	170
05	Journals (VTU Consortium)Engineering	6671

	(Major of the Journals are International)	
06	Journals (VTU Consortium) Management (Major of the Journals are International)	212
07	Journals (DELNET) Engineering (Major of the Journals are International)	912
08	Journals (DELNET) Management (Major of the Journals are International)	240
09	Digital Library with 10 Computers and Printing and reprography service	
10	Drillbit-Plagiarism Detection Software	
11	Library management software	

### E-Library facility / Remote access to library:

The Library uses the Easylib (Entire Automation System for Library) Software package, which is an integrated multi-user library management system that supports all in-house operations of the library. The software consists of modules on Registration, Acquisition, Cataloguing and Accessioning, Circulation, Periodicals, Members, Setup and Security, Digital Library, Online Public Access Catalog (OPAC), In/Out Management, and Reports. The books/journals can be accessed through OPAC, which facilitates the search for books by author, title, and edition. The Easylib package has been made more efficient by bar-coding the entire library collection.

Remote Access: Remote access through the mLibrary mobile App (Anywhere, Anytime Any device). Through the mLibrary mobile app users can access the library subscription and top open-access academic content including eLearning and multimedia at their fingertips. It gives 24\*7 access to the resources that are subscribed to by the library and also to the open-access resources.

### Laboratory and workshops:

- The list of laboratories available in each department is given below:

#### Department of AI-DS and AI-ML:

Sl. No	Room Number	Name of the Laboratory	Area (m <sup>2</sup> )/ Computers (numbers)	Major facilities available
1	F106	Computer Lab 1	81	36 i5 Systems with adequate open source software
2	F107 and F108	Computer Lab 2 and 3	150	36 i5 Systems with adequate open source software
3	F109	Computer Lab 4	75	36 i5 Systems with adequate open source software
4	F110	Computer Lab 5	82	36 i5 Systems with adequate open source software
5	F111	Computer Lab 6	80	36 i5 Systems with adequate open source software

#### Department of Civil Engineering:

Sl. No	Room Number	Name of the Laboratory	Area (m <sup>2</sup> )/ Computers (numbers)	Major facilities available
1	C001	Concrete and Highway Materials Lab	290.00	Auto Clave Blaine's air permeability apparatus, Compression testing Machine, Vee bee consistometer, Concrete permeability equipment, Bitumen penetration equipment Bitumen ductility equipment, Marshal stability apparatus, Vibrating table,

				Mortar mixing machine, Concrete Mixer, Ultrasonic Pulse velocity Machine, Rebound Hammer (Digital)
2		Models Lab	45.00	Various models
3		Applied Engineering Geology Lab	46.00	Mineral Samples, Rock Samples, Models Charts, Mohr's Scale of hardness
4	C106	Computer Aided Design Lab	85.14	Computers – 24 numbers
5	C202	Environmental Engineering Lab	137.00	Electrical conductivity meter (digital), PH meter (digital) BOD incubator, Digital COD measurement device, Spectra Photometer, Flame Photometer, Turbidity meter, Jar test apparatus, Refrigerator, Double Distillation Unit
6	ASB06	Geo Technical Engineering Laboratory	230.00	Hot air oven, Sieve shaker, Compaction apparatus, Permeability apparatus, Unconfined compression test apparatus, Direct shear apparatus, Tri-axial compression, test apparatus with pore pressure equipment Infrared Moisture Meter, Vane Shear Apparatus
7	C002	Surveying Practice Lab	61.50	Plane table with accessories Auto level, Theodolite, Electronic Theodolite, Total Station

#### Department of Computer Science & Engineering:

Sl. No	Room Number	Name of the Laboratory	Area (m <sup>2</sup> )/Computers (numbers)	Major facilities available
1	A307	Computer Lab 1	102	36 i5 Systems with adequate open source software
2	A309	Computer Lab 2	102	36 i5 Systems with adequate open source software
3	F101	Computer Lab 3	100	36 i5 Systems with adequate open source software
4	F102	Computer Lab 4	92	36 i5 Systems with adequate open source software
5	F103 and F104	Computer Lab 5 and 6	145	72 i5 Systems with adequate open source software
6	F111	Computer Lab 7	80	36 i5 Systems with adequate open source software

### Department of Electronics & Communication Engineering

Sl. No	Room Number	Name of the Laboratory	Area (m <sup>2</sup> )/ Computers (numbers)	Major facilities available
1	Ground floor	VLSI Lab	76	Arduino kits, Electrical VLSI tool, LTspice
2	I floor	DSP lab	102	Matlab
3	I floor	HDL lab	102	Xilinx, FPGA
4	I floor	Analog and digital Circuit lab/communication lab	102	Digital trainer kits, CRO, Power supplies, ICs, Microwave antenna testbench
5	I floor	Electronic Principle and circuit Lab	102	MultiSim
6	II floor	Project Lab	102	Space for mini project
7	II floor	Electrical Lab	102	Electrical equipment kits

### Department of Mechanical Engineering:

Sl. No	Room Number	Name of the Laboratory	Area (m <sup>2</sup> )/ Computers (numbers)	Major facilities available
1	DB01	Fluid Mechanics Lab	230	Francis Turbine Kaplan Turbine Pelton Turbine Centrifugal and Reciprocating pumps Air Compressors Equipment to Measure COD
2	F003(1)	Design Laboratory	100	Equipment to conduct Determination of Natural Frequency, Balancing of Rotating Masses, Critical Speed of a Rotating Shaft, Fringe Constant of Photo Elastic Material, Stress Concentration using Photo Elasticity, Equilibrium Speed, Sensitiveness, Power and Effort of Porter/Prowel /Hartnel Governor, Pressure distribution in Journal bearing, Principal Stresses and strains, Experiments on Gyroscope
3	F002(2)	Energy Conversion Engineering Laboratory	100	Four Stroke Diesel Engine Cut Section, Two Stroke Petrol Engine Cut Section, Planimeter, Able's Flash and Fire Point Apparatus, Pensky Martin's Flash and Fire Point Apparatus, Redwood Viscometer, Saybolt Viscometer, Torsion Viscometer, Boy's Gas Calorimeter, Bomb Calorimeter, Four Stroke Single Cylinder Diesel Engine Test Rig, V.C.R Petrol Engine Test Rig, Two Stroke Single Cylinder Petrol Engine Test Rig, Four Stroke Four Cylinder Petrol Engine Test Rig with Hydraulic Dynamometer (Morse Test).
4	F002(1)	Heat & Mass Transfer Laboratory	100	Thermal Conductivity of Metal Rod Apparatus, Composite Wall Apparatus, Pin-

				Fin Apparatus, Natural Convection Apparatus, Forced Convection Apparatus, Emissivity Measurement Apparatus, Stefan Boltzman's Constant Apparatus, Parallel & Counter Flow Heat Exchanger Apparatus, Critical Heat Flux Apparatus, Condensation Apparatus, Vapor Compression Refrigeration Test Rig, Air Conditioning Cycle Test Rig, Transient Conduction Apparatus.
5	F004(2)	Metallography and Material Testing Laboratory	75	Universal Testing Machine(60 Tons) Mechanical Type, Wear and Friction Tester, Magnetic Crack Detector 1000 amps, Ultrasonic Flaw Detector, Rockwell Cum Brinell Hardness Tester, Vickers Hardness Tester, Fatigue Testing Machine, Impact Testing Machine, Torsion Testing Machine,
6	F004(1)	Metrology and Mechanical Measurements Laboratory	100	Pressure Gauge Setup, Thermo Couple Setup, L.V.D.T. Setup, Load Cell Set Up, Strain Gauge Setup, Autocollimator Single Axis, Gear Tooth Verniers, Digital Vernier Caliper, Micrometers (0-25mm), Digital Micrometer (0-25mm), Mechanical Comparator, Floating Carriage Micrometer (2 wire / 3 wire), Slip Gauge 83pieces set, Profile Projector, Toolmaker's Microscope, Sine Center 200mm, Sine Bar 200mm, Granite Surface Plates.
7	F001 (1) and F001(2)	Workshop and Machine Shop Laboratory	300	All geared Lathe , Belt driven (Cone Pulley Type) Lathes 12 No.s, Universal Surface Grinder, Slotting Machine Milling Machines, Shaping Machines, Radial Drilling Machine, , Hydraulic power Hacksaw Machine, Bench Grinder.
8	F003(2)	Forging and Foundry Lab	100	Forging furnace Forging tools Mould boxes Foundry tools
9	C106	CAD Lab	107	32 si3 systems with solid edge, Auto CAD software

#### Other Laboratories:

Sl. No	Room Number	Name of the Laboratory	Area (m <sup>2</sup> )/ Computers (numbers)	Major facilities available
1	AB004	Language Lab	112	Computers, Language ;Lab software
2	AB005	Physics Lab	201	Microscopes, various equipment to conduct first year lab
3	C202	Chemistry Lab	137.00	Electrical conductivity meter (digital), PH meter (digital) BOD incubator, Digital COD measurement device, Spectra

				Photometer, Flame Photometer, Turbidity meter, Jar test apparatus, Refrigerator, Double Distillation Unit
4	A110	CAD Lab	150	32 i3 systems with solid edge, Auto CAD software
5	A111	Central Computer Center	178	Computers
6	AB001	Research Center (Chemistry)	20	Facilities to conduct research work
7	A301	Research Center (Physics)	20	Facilities to conduct research work
8	DB01	Fabrication Lab	102	CNC Milling center, CNC Lathe, Welding machine, Computers..etc
9	F105	Innovation Lab	55	Texas instrument kits, Make-it Kits, Computers

### **Institute Innovation Club (IIC):**

The innovation club helps to engage students in innovative and creative activities apart from regular academics by providing opportunities for hands-on activities. The institute has established the innovation cell with the following objectives.

#### **Objectives:**

- To create awareness, educate, nurture and inculcate a culture of innovation among engineering students.
- To enable them to generate new ideas and become more innovative.
- To organize an Interdisciplinary project exhibition

#### **Roles and Responsibilities of the Coordinator**

- Enrolment of students as Innovation Club members and allow them to work on innovative projects.
- Periodic activities, workshops, and competitions to keep the spark of creativity, innovation, and design alive and thriving in students.
- Guidance for the development of innovative scientific solutions to solve everyday problems.
- To provide technical support in the form of basic tools, shackles, equipment, raw materials, and project manual/report.
- To monitor the activities of the innovation club.
- To encourage the students to apply for various funds for their innovative projects.

#### **Achievements of the Institute Innovation Cell (IIC):**

- NIRF rank for innovation in the band of 150-300
- Received Rs. 2.25 Lakhs towards mentoring three institutes in innovation.

### **Institute social media cell:**

The institute has established a Social Media Cell headed by a senior faculty member. This cell updates the activities and programs organized in the institute in social media like Facebook, Instagram, and LinkedIn. Also, the cell publishes the institute's promotional information (Text, pictures, and videos) on social media. It also supports in live streaming of programs conducted in the institute.

**Compliance of Academic Bank of Credit in the institute:** Yes. Implemented.

### **Short video of the infrastructure and facilities of the institute:**

[https://drive.google.com/drive/folders/1AuAi44lQOYXpMMRF\\_MOKVUbBhe2rbPK5?usp=drive\\_link](https://drive.google.com/drive/folders/1AuAi44lQOYXpMMRF_MOKVUbBhe2rbPK5?usp=drive_link)



## Sports and Games facility:

The Department of Physical Education, in addition to guiding the students in physical activities and organizing sporting events and games, trains and prepares students for various inter-collegiate and University level athletic competitions and tournaments. Facilities for various indoor and outdoor games like carom, chess, Table Tennis, Shuttle badminton, cricket, volleyball, basketball, handball and throw ball are available for the students. Also, a Multi-gym facility has been provided for the students and staff.

### Details of the Department of Physical Education and sports/games facilities:

- Department Office
- Athletic Field & Cricket Field
- Carrom, Chess and Table Tennis facilities
- Basketball court (Outdoor Court, Concrete flooring)
- Shuttle badminton (4 - Outdoor Courts, Interlock flooring)
- Volleyball & Throw ball Court
- Kabaddi Court
- Ground Store Room
- Gymnasium

### Teaching–Learning Process:

- Curricula and syllabus for each of the Programmes are approved by the University.  
<https://vtu.ac.in/en/b-e-scheme-syllabus/#menu0>
- Academic Calendar of the University  
<https://vtu.ac.in/en/?s=ACADEMIC+CALENDAR>
- Academic Time-Table of the Institute:  
<https://sode-edu.in/wp-content/uploads/2022/12/Class-Time-Table-2022-23-ODD-SEMESTER.pdf>

## Soft Skill Training facility:

The institute takes care of soft skill training for the students in the following ways: The soft skill training commences in the third semester BE program and extends up to the seventh semester covering various aspects of soft skill training with almost 30 hours of training per semester. The institute hires trained personnel for this program. Also, few faculty members of the institute are well-versed in soft skill training and the follow-up sessions will be conducted by the internal trainers.

## Continuous Internal Evaluation (CIE):

The Semester Examination and Continuous Internal Evaluation procedure are prescribed by Visvesvaraya Technological University, Belagavi and the Institute follows the same. Apart from this, the institute conducts various technical and non-technical events to assess the student's performance.

## Formative Assessment

The formative assessment refers to a wide variety of methods that teachers use to conduct in-process evaluations of student comprehension, learning needs, and academic progress during the course. CIE is implemented in academic areas using different evaluation techniques like internal assessment tests, quizzes, seminars, assignments, internships, etc., as prescribed by the university. The performance of the students in the internal assessment tests is regularly recorded and monitored by the mentors in the Cumulative Performance Diary (CPD) as well as in the Institute Management Information System (MIS). Results of internal tests and university examinations are analyzed and meetings are conducted to discuss the performance of the students. Parents of the poor performers are requested to meet the mentors, to have a close discussion about the student's performance. As a part of continuous internal evaluation, students' Leadership qualities, presentation skills, etc. are recorded in CPD by the respective mentors.

## Summative Assessment

At the end of the semester, the assessment of students in academic and non-academic areas are included in the summative assessment. The summative assessment in the academic areas, like, the subject knowledge, the skill set of the students, etc. is tested by the university examinations at the end of the semester. Practical courses and seminars are also a part of SEE as per the guidelines of VTU.

## 14. Placement and Training

The training and placement cell of the institute conducts soft skill, aptitude and technical training to students to enhance the job opportunity. The cell also strives hard to bring the companies for campus recruitment. The Placement process is initiated with a clear focus on all levels of companies that are contacted and invited for the campus recruitment drive which matches all the academic levels of the students.

The placement cell works as a liaising office between the industry and academia in organizing guest lectures, internships, industry visits, industry-linked projects and campus placements. It helps the students to develop contacts with companies while undergoing internships and doing their project work in their final semester.

The college has a fully furnished placement department to conduct the training and interview process. The department has 3 seminar halls, 2 GD rooms, and 8 interview cabins to conduct the campus pool selection process for 500+ students.

### Campus placement in last three years with Min/Max/Average salary

Academic Year	No. of job offers to students	Minimum salary	Maximum Salary	Average salary
2020-21	175	1,44,000.00	15,00,000.00	3,77,450.00
2021-22	199	1,44,000.00	8,00,000.00	4,10,000.00
2022-23	248	3,00,000.00	8,50,000.00	4,20,000.00
2023-24	132*	4,00,000.00	8,50,000.00	4,50,000.00

\*ongoing

