

SHRI MADHWA VADIRAJA INSTITUTE OF TECHNOLOGY AND MANAGEMENT

An Autonomous Institution, affiliated to VTU, Belagavi, Approved by AICTE, New Delhi
Accredited by NBA (BE – CSE, ECE, ME) and NAAC with 'A' Grade
(A unit of Shri Sode Vadiraja Mutt Education Trust ®)

MANDATORY DISCLOSURE

2025-26



**SHRI MADHWA VADIRAJA INSTITUTE OF TECHNOLOGY
AND MANAGEMENT**

Vishwothama Nagar, Bantakal – 574115, Udupi District, Karnataka



SMVITM

Table of Contents

1. Name of the Institution	1
2. Name and address of the Trust and the Trustees	1
3. Name and Address of the Principal	1
4. Name of the Affiliating University	1
5. Governance	2
6. Programmes	7
7. Faculty	8
8. Profile of Principal	12
9. Fee Structure	13
10. Admission	15
11. Admission Procedure	15
12. Criteria and Weightages for Admission	15
13. List of applicants (2023-24)	16
14. Results of Admission under Management Seats/Vacant Seats	25
15. Information on Infrastructure and other resources Available	30
16. Placement details	39
17. List of Research Projects/Consultancy Works	39

1. Name of the Institution

SHRI MADHWA VADIRAJA INSTITUTE OF TECHNOLOGY AND MANAGEMENT

Area: Vishwothama Nagara

Post: Bantakal

Dist: Udupi

Pin: 574 115

Telephone: 0820-2484182 / 7483031199 / 9611615001

Fax: 0820-2484184

2. Name and address of the Trust and the Trustees:

Shri Sode Vadiraja Mutt Education Trust (R)

Bhoovaraha Complex

Car Street, Udupi

Pin: 576 101

Phone: 0820-4294005

Trustees:

1. H. H. Shri Vishwavallabha Theertha
Swamiji, President
Shri Sode Vadiraja Matha Education Trust,
Car Street, Udupi, Pin: 576101
Phone: 0820-4294005
trust@sode-edu.in
2. Shri. P. Srinivasa Tantry
Vice President
Shri Sode Vadiraja Matha Education Trust,
Car Street, Udupi, Pin: 576101
Phone: 0820-4294005
3. Shri. Rathnakumar
Secretary
Shri Sode Vadiraja Matha Education Trust,
Car Street, Udupi, Pin: 576101
Phone: 0820-4294005
4. Prof. B. S. Revankar
Trustee
Shri Sode Vadiraja Matha Education Trust,
Car Street, Udupi, Pin: 576101
Phone: 0820-4294005
5. Shri. H. V Gowthama
Trustee
Shri Sode Vadiraja Matha Education Trust,
Car Street, Udupi, Pin: 576101

3. Name and Address of the Principal

Dr. Nagaraj Bhat

Principal

0820-2589182 / 7676023543

principal@sode-edu.in

4. Name of the Affiliating University

Affiliated to Visvesvaraya Technological University, Belgaum, Karnataka State

5. Governance

Members of the Governing Body :

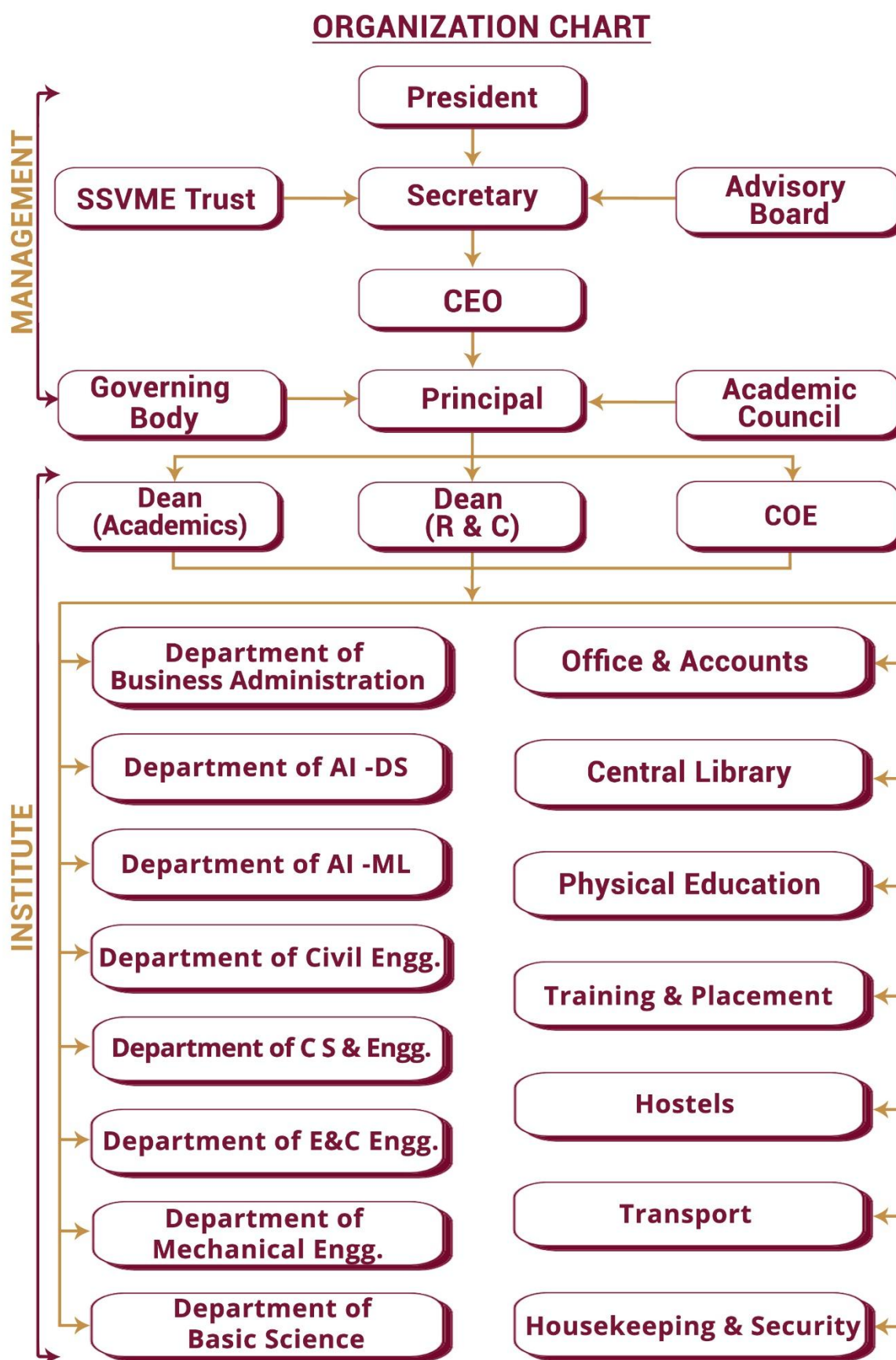
Members of the Governing Body and their brief background are as follows:

Sl. No	Name of the board member	Position
01	H.H Shri Vishwavallabhatheertha Swamiji President, SSVMET	Chairperson
02	Shri Rathnakumar Secretary, SSVMET	Member -Management
03	Prof. Dr. S G Gopalakrishna Director Nagarjuna College of Engineering & Technology, Bengaluru	Member -Management
04	Prof. Dr. M. S Moodithaya Vice-Chancellor NITTE Deemed-to-be-University Mangaluru	Member- Management
05	Shri Harish Belman Proprietor Premier Investments, Udupi	Member -Management
06	Prof. Dr. Sudarshan Rao Professor & Dean(Academics) SMVITM	Member - Faculty of the College
07	Prof. Dr. Sachin Bhat Professor & Dean (Research) SMVITM	Member - Faculty of the College
08	Profe. Dr. Radhakrishna S Aithal CEO, Shri Sode Group of Institutions	Member - Administrative
09	Prof. Dr. Gururaj Kidiyoor Professor & Dean(A) TAPMI, Manipal	Educationalist
10	Prof. Shivalingaiah Academic Senate Member, VTU & Former Chairman, Pollution Control Board, Bengaluru	University Nominee
11	Prof. Dr. Nagaraj Bhat Principal, SMVITM	Member Secretary

Frequency of the Board Meeting:

Bi-annually

Organisational chart and processes:



The institute was established by H. H. Shri Vishwavallabha Theertha Swamiji in the year 2010 to provide quality engineering education at an affordable cost. The Institution is managed by Shri Sode Vadiraja Mutt Education Trust ®, under the aegis of Shri Sode Vadiraja Matha, Udupi which is known for its service to society. To enhance and sustain quality professional education on par with the best in its class institution, a robust structure has been established.

The Governing Body (GB) is the chief policy-framing body of the Institute. The president of the Institute is the Chairman of the GB, which holds meetings at least twice a year and takes all policy decisions for the institute. The institute trust has members who have served the industry/academia for quite a long period. The Principal is the Member Secretary of the Governing Body.

The Principal and the Heads of Departments monitor the academic, administrative, and student-related matters in the Institute. Various committees coordinate the routine activities and work in the smooth functioning and development of the Institute.

Involvement of Faculty and students in academic affairs/improvements

Faculty Involvement:

Faculty members are involved in PAC (Programme Assessment Committee), DAB (Departmental Advisory Board), and IQAC (Internal Quality Assurance Cell) to solicit ideas and opinions to strengthen the system. In addition, faculty members are leading the different supportive committees for the smooth functioning of the Institution.

Student Involvement:

The Institute strongly believes in Outcome Based Education and involves the students in experiencing the authority and responsibilities and to ensure that the students imbibe graduate attributes adopted by the institute. All the students are provided a fair opportunity in all the affairs of the Institute, viz., curricular, co-curricular, and extracurricular activities.

The departments have a minimum of two students as representatives from each section to bring academic matters to the forum initially at the department level and the institutional level. All the departments conduct meetings with the student class representatives after every internal test to address academic-related matters. Apart from this, the Management conducts a yearly meeting with class representatives to solicit their opinions regarding academic and institutional facilities. All the departments have a department student chapter/society, professional associations, and various social clubs. The Head of the Department, staff, and students of the respective departments in consultation with the Principal choose the office bearers. In addition, the students are actively involved in the Outcome based Education system to strengthen and sustain the teaching-learning process. Student representatives are also involved in the PAC, DAB, and IQAC. Further, the institution ensures students' involvement in various institute-level academic and administrative committees to create a conducive environment for the overall development of the students and to understand ground reality from the student's perspective. Moreover, their association with these committees ensures improvement in the POs such as team building, professional ethics, and the role of an engineer in society, the environment, and sustainability.

The Students (chapter/forum) Associations such as IEEE, ISTE, Cultural Committee, Grievance Cell, Anti-ragging Committee, Sports Committee, NSS, YRC, NCC, etc. have student representatives to create proactive pupils.

Mechanism/ Norms and Procedure for Democratic/ Good Governance

Service Rules:

Service rules are prepared and approved by the Governing Body. The procedure of requirements, promotion policy, leave rules, etc. is explained in the service rules. The same is disseminated to all the faculty and staff. Printed books are made available with all the HODs and soft copy is made available on the institute website. Any changes made to the service rule are made known through circulars.

Service Rule Link: <https://sode-edu.in/smvitm/uncategorized/service-rule/>

Policies:

The institute has well-defined rules, policies and procedures for the students and staff. Based on the need, amendments are made to the policies and procedures with prior information to the students and staff. The recruitment and promotional policies are also clearly defined. Following are the rules, procedures and policies of the institute.

Published rules:

Rules	Applicable to	Publication and awareness	Year of Publication
Academic and Examination regulations	Students and staff	Prepared by the institute, approved by Governing Body and Academic Council and a copy of the same is available in every department and website.	2025, amended from time to time
University Rules	Students and staff	Published on the University website. Every student and faculty has access to the handbook published by VTU.	2002, amended from time to time with information on the university website
Institute Rules	Students and staff	Published on the website.	2010, amended from time to time with information on the university website
Service Rules	Faculty & Staff Members	Prepared by the institute and a copy of the same is available in every department and website	2010, amended from time to time. A copy is available with the H.O.D's for the reference of faculty/ staff members.
Library Rules	Students and staff	Published on the website.	2010, amended from time to time and displayed in the library
Regulations for Hostels	Hostel students	Published on the website and hostel notice boards	2010, amended and given when joining the hostel, published in the hostel notice board
Rules for Internet access	Staff and Students	Published on the website and student notice board	2016, amended from time to time.
Bus Transport Rules	Faculty & staff using transport facility	Published on the website and student notice board	2012, Amended from time to time
IT Rules	Students and staff	Published on the website and student notice board	2012, Amended from time to time

General Policies:

- Conduct, valuation, and documentation of internal examinations are organized by the Dean (Academics).
- Norms are established for student etiquette, behaviour, and campus/hostel discipline.
- Appointment of staff is done by the Selection Committee, after ascertaining the qualifications, interview, and demonstration lectures.
- Financial/Administrative issues are routed through proper channels (HOD & Sections Heads) for approval by the Principal.
- The principal has full autonomy over academics, finance and implementation of various policies and procedures
- The HOD has autonomy over departmental matters and reports to the Principal.
- Discussion on Inter-departmental/Institute matters takes place in the Institute Council.
- All faculty allocations are approved by the Governing Body and all appointments are ratified by the Governing Body.
- Appointments are instituted only after due advertisement, interview, and demonstration to ensure fairness and transparency in the selection process.
- The role of the Principal in financial, administrative, and academic matters are well-defined.
- The posts of Vice Principal, Dean (Academics), and Dean (QA) are created to ensure autonomy and administrative ease. The Vice Principal is responsible for the overall administration in the absence of the Principal. In addition, the Vice Principal is responsible for promoting research, publication, incubation, and start-ups in the institute. Similarly, the Dean (Academics) will take care of all academic-related

matters and the Dean (QA) is responsible for the quality assurance and accreditation.

- There is a periodic revision in pay scale/allowances and the same is to be approved by the Governing Body.
- The designation and promotion of faculty is strictly as per AICTE norms, and the institute has a promotion policy as well (published in the service rule)
- Depending on the performance appraisal, the staffs employed under training is absorbed into probation and permanent employment, The period of training/probation may be extended, if necessary, and promotions are according to AICTE regulations.
- The Institute has implemented a Performance Based Appraisal System (PBAS) for assessing the performance of the faculty and the promotion of the faculty/staff member is based on his/her performance and not by right. Similarly, incentives are sanctioned for good performers based on his/her performance/contribution.
- The Institute extends support to any faculty member pursuing a doctoral degree

Transparency in financial functions:

The Governing Body has authorized the Principal of the institute to deal with the financial aspects. The budget is prepared by each department before the commencement of each financial year, institute level consolidated budget prepared by the Finance committee and the same is discussed in the Governing Body (GB) before giving its approval. The investment in infrastructure and facilities, as well as the purchase of equipment and services for various departments, is placed before the GB. This Committee decides on investment in infrastructure and facilities. The Principal will discuss and decide the various requirements of the institute and place the same before the Secretary for approval. Approval by the secretary for all major purchases, and investments is mandatory.

Payment of Salary and Mandatory Payments: The salary is paid on the 5th day of every month and it is approved by the Secretary. All mandatory payments, such as Provident Fund, Income Tax, and ESI contribution, shall be paid on or before the 15th of every month.

Deputation for research/post-doctorate/FDPs/Workshops: The faculty member shall submit a formal request for any of the career advancement schemes to the respective HOD. Based on the recommendation by the HOD, the Principal will approve the requests. Permission from the Secretary is required for deputing faculty member(s) for which the expenses are more than 15,000 per faculty.

Financial power to the HODs: The Heads of various departments are permitted to spend Rs. 15,000 on simple equipment/facilities/books. etc required for the classes/laboratories.

Transparency in academic functions:

- The academic rules and regulations of the Institute are published on the Institute's website. A copy of the hostel rules and regulations is given to each student at the time of admission and the same is displayed on the hostel notice board
- Any changes to the rules and regulations are intimated to the staff and students through circulars displayed on notice boards and very important information is read out in the classrooms
- The Institute strictly follows the rules and regulations of the University, which are available on the University website
- The student's attendance in each subject, marks scored on the test, and end-semester examination marks and grades are displayed on the notice board and also shared with the parents from time to time.
- The students are permitted to go through their assessment books and inform them of any discrepancies to the concerned teacher. If it is disregarded by the faculty, they can approach the HOD and the Principal

Transparency in administration and auxiliary functions:

- All administrative decisions are taken by the GB of the institute, and administrative decisions related to the functioning of the institute are communicated to the HODs and section heads
- Administrative decisions related to staff members are communicated to them during general staff meetings, which are held twice a semester
- Changes in pay scale and allowance patterns are declared in general staff meetings and are strictly followed by the Management
- Service registers are maintained for each faculty member and a copy of the letter issued to a staff member is kept in an individual file, which is maintained by the HR department
- The audited balance sheet of the Institute is available on its website
- The admission policies are made clear on the website and are also displayed at the entrance of the administrative block

- The Institute has provided email facilities to all faculty, staff, and students. The concerned authorities will share administration information through e-mail if the need arises

Statutory Committee/Cell

- The following committees/cells are formed for the support of staff and students.
- Institutional Grievance Redressal Cell : <https://sode-edu.in/smvitm/wp-content/uploads/2026/01/IGRC-2025-26Revised.pdf>
- Anti Ragging Committee & Squad : <https://sode-edu.in/smvitm/wp-content/uploads/2026/01/Anti-Ragging-Committee-2025-26Revised.pdf>
- Online Grievance Redressal Mechanism : <https://sode-edu.in/grievance-form/>
- College Internal Compliance Committee: <https://sode-edu.in/smvitm/uncategorized/college-internal-complaints-committee-cicc/>
- SC/ST/OBCCell : <https://sode-edu.in/smvitm/wp-content/uploads/2026/01/SC-ST-OBC-Cell-2025-26.pdf>
- Internal Quality Assurance Cell: <https://sode-edu.in/smvitm/wp-content/uploads/2026/01/IQAC-2025-26Revised.pdf>

Student Feedback on Institutional Governance/ Faculty Performance:

The institute has adopted a well-organized feedback collection process through the online system using MIS. The students do not reveal their identity in the feedback process. The Dean (Academics) initiates and concludes the feedback collection through his office. The feedback is collected from the student at the end of the semester. All the comments written by the students are shared with the faculty members. This will help the faculty members to understand their strengths and weaknesses. The following three types of feedback are used to enhance the teaching-learning process at the end of every semester.

Feedback process at SMVITM

Feedback type	Frequency	Feedback collected from	Mode	Purpose
Feedback on the teaching-learning process	Twice in a semester	All students	Online through MIS	To improve TLP
Course end survey	Once a semester	All students	Online through Google form	To improve TLP and CO assessment
Graduate survey	Once in a year	Final year students	Online through Google form	To improve TLP and PO assessment
Student Satisfaction survey	Once in a year	First, Second and Third-year students	Online through Google form	To improve TLP
Feedback on facility	Once in a year	Second and Third-year students	Online through Google form	To improve the institute's facility
Alumni survey	Once in a year	Institute Alumni	Online through Google form	To improve TLP and PEO assessment
Curriculum feedback	Once in a year	Faculty, Students, Alumni, Parents and Employer	Offline	To improve TLP and include value-added courses

Feedback on the teaching-learning process: This feedback is very essential to improve the quality of teaching-learning process and the feedback from the students will be taken twice in a semester, namely formative feedback and summative feedback. The **Formative feedback** is gathered in the middle of every semester, generally in the 8th week of the ongoing semester and the **Summative Feedback** is taken in the 12th week of every ongoing semester. These feedbacks are generally collected online using the institute MIS. The feedback contains 10 questions and the students shall rate on 5 point scale and the students. Once the feedback is collected from the students, the respective Head of the department will share the information with the individual faculty member along with his/her observations. Faculty members with less than 75% feedback will be informed to improve their performance and appreciation to the faculty with 90% above points.

Course end survey: The course end survey is collected from the students to know the attainment of the course outcomes. This survey is collected at the end of the semester through a Google form developed by the

respective course coordinator. There are two sections in the course-end survey. The first section includes the course objectives, course content, various activities, and assessment conducted in the class and the second section is about the course outcomes. Both the sections are rated on four point scale. The response of the survey is used for the indirect assessment of the course outcomes.

Student's assessment of faculty, system in place: Online feedback with questions relevant to teaching-learning process is collected twice in a semester. Performance is measured in terms of the percentage of points obtained for each question. Concerned HOD and the individual faculty are made to know the marks scored in the feedback. HOD congratulates the best-performing faculty members and encourages others to perform better

6. Programmes offered:

Name of the Programmes approved by AICTE:

- Master of Business Administration (MBA) in Business Analytics, HR, Finance & Marketing
- BE in Artificial Intelligence & Data Science
- BE in Artificial Intelligence & Machine Learning
- BE in Civil Engineering (Progressive closure from 2024)
- BE in Computer Science & Engineering
- BE in Electronics & Communication Engineering
- BE in Mechanical Engineering

Names of the Programmes Accredited by NBA:

- BE in Computer Science & Engineering
- BE in Electronics & Communication Engineering
- BE in Mechanical Engineering

Status of the Accreditation of the courses:

Total Number of Courses eligible for accreditation: **03**

No. of courses Accredited: **03**

Status of Accreditation: Engineering programmes CSE & ECE Accredited by NBA valid till 30 June 2027
Engineering programme Mechanical Accredited by NBA valid till 30 June 2028

NBA accreditation certificate link: <https://sode-edu.in/smvitm/uncategorized/national-board-of-accreditation-nba/>

Admission details:

Course	Number of seats	Duration	Cut off rank for the last three years		
			2025 Highest to lowest	2024 Highest to lowest	2023 Highest to lowest
Master of Business Administration (MBA)	120	2 years	22490-21345	22828 - 30535	43655-43006
BE in Artificial Intelligence & Data Sc.	60	4 Years	52014-231660	59257-261102	47361-80075
Artificial Intelligence & Machine Learning	60	4 Years	56650-245821	63738-93089	56179-80115
Civil Engineering	-	-	-	closed	171534-179534
Computer Science & Engineering	180	4 Years	51700-237586	51794-107441	35131-39746
Electronics & Communication Engg	120	4 Years	85639-240486	88103-265294	78158-195051
Mechanical Engineering	60	4 Years	131578-237942	167473-251899	183196-183196

7. Faculty

Profile of the Faculty Members

Profile of the Faculty Members

- Master of Business Administration: https://sode-edu.in/smvitm/sode-faculty/?dept_id=26876
- Artificial Intelligence & Data Science: https://sode-edu.in/smvitm/sode-faculty/?dept_id=23988
- Artificial Intelligence & Machine Learning: https://sode-edu.in/smvitm/sode-faculty/?dept_id=23992
- Civil Engineering: https://sode-edu.in/smvitm/sode-faculty/?dept_id=177
- Computer Science and Engineering: https://sode-edu.in/smvitm/sode-faculty/?dept_id=41
- Electronics and Communication Engineering: https://sode-edu.in/smvitm/sode-faculty/?dept_id=1058
- Mechanical Engineering: https://sode-edu.in/smvitm/sode-faculty/?dept_id=47
- Chemistry: https://sode-edu.in/smvitm/sode-faculty/?dept_id=16999
- Physics: https://sode-edu.in/smvitm/sode-faculty/?dept_id=17004
- Mathematics: https://sode-edu.in/smvitm/sode-faculty/?dept_id=17002

Civil Engineering

Sl.No	Name of the Faculty	Designation
1	Dr. Deepika B V	Associate Professor & Head
2	Mr. Sunil Suresh Haldankar	Assistant Professor (Sr.)
3	Mr. Madhusoodhana Rao N	Assistant Professor (Sr.)
4	Mr. Roshan S Kotian	Assistant Professor (Sr.)
5	Dr. Aishwarya Lakshmi	Visiting Faculty
Department of Computer Science & Engineering		
1	Dr. Nagaraj Bhat	Professor & Principal
2	Dr. Soumya J Bhat	Associate Professor & COE
3	Dr. Sadananda L	Associate Professor & Head
4	Dr. Bharti Panjwani	Associate Professor
5	Dr. Sanjana M Kavatagi	Associate Professor
6	Mr. Chandrashekhar Rao Kuthyar	Assistant Professor (SG.)
7	Dr. Surajit Deb Barma	Assistant Professor (SG.)
8	Mr. Deepak Rao M	Assistant Professor (Sr.)
9	Ms. Sahana	Assistant Professor (Sr.)
10	Ms. Savitha A Shenoy	Assistant Professor (Sr.)
11	Mr. Raghavendra Ishwar Hegde	Assistant Professor (Sr.)
12	Ms. Rukmini Bhat	Assistant Professor (Sr.)
13	Ms. Yashaswini A S	Assistant Professor (Sr.)
14	Ms. Sowmya	Assistant Professor (Sr.)
15	Ms. Preethi M	Assistant Professor (Sr.)
16	Mr. Raghavendra G S	Assistant Professor (Sr.)
17	Ms. Tejaswini H	Assistant Professor
18	Ms. R. Soundharya	Assistant Professor
19	Ms. Chaithra Bhat M	Assistant Professor
20	Ms. Reshma	Assistant Professor
21	Ms. Mahadevi	Assistant Professor
22	Ms. Babitha Poojary	Assistant Professor
23	Ms. Ashritha K P	Assistant Professor
24	Ms. Ashwitha C Thomas	Assistant Professor
25	Mr. Raghavendra Joshi	Assistant Professor

26	Ms. Ranjani	Assistant Professor
27	Ms. M S Rajeshwari	Assistant Professor
28	Mr. Prasad Pai	Visiting Faculty
Electronics and Communication Engg.		
1	Dr. Sachin S Bhat	Professor & Dean (R & C)
2	Mr. Arun Upadhyaya	Associate Professor & Head
3	Dr. Nagaraja Rao	Associate Professor
4	Dr. Shilpa Kamath S	Associate Professor
5	Mr. Chetan R	Assistant Professor (SG)
6	Ms. Shashikala R.	Assistant Professor (SG)
7	Mr. Ganesh Srinivasa Shetty	Assistant Professor (SG)
8	Ms. Sowmya Bhat	Assistant Professor (SG)
9	Mr. Sachin Prabhu K	Assistant Professor (SG)
10	Ms. Jayalakshmi K P	Assistant Professor (SG)
11	Ms. Yogeshwary B H	Assistant Professor (Sr.)
12	Ms. Akshatha Rao L	Assistant Professor(Sr.)
13	Ms. Pavithra Poornima	Assistant Professor(Sr.)
14	Mr. Raghunatha	Assistant Professor(Sr.)
15	Mr. Punith Bekal	Assistant Professor(Sr.)
16	Ms. Chandana	Assistant Professor
17	Ms. Jayashree M	Assistant Professor
18	Ms. Lahari Vaidya	Assistant Professor
19	Mr. Ajesh	Assistant Professor
20	Mr. Sandeepa Prabhu	Assistant Professor
21	Mr. Ganesh U G	Assistant Professor
Department of Mechanical Engineering		
1	Dr. Sudarshan Rao K	Professor & Dean (Academics)
3	Dr. Udaya Prasanna H	Professor on contract
4	Dr. Raja Yateesh Yadav	Associate Professor & Head
5	Dr. Madhukara Nayak	Associate Professor
6	Dr. Manjunath S	Assistant Professor (SG)
7	Dr. Bharath K Bhat	Assistant Professor (SG)
8	Mr. Adithya Kudva S	Assistant Professor (SG)
1	Mr. Sudhir	Assistant Professor (SG)
10	Mr. Mallya Ananth Mohan	Assistant Professor (SG)
11	Mr. Ravinarayan Rao	Assistant Professor (Sr.)
12	Mr. Karthik V	Assistant Professor (Sr.)
13	Mr. Hithesh Mendon	Assistant Professor
Department of Chemistry		
1	Dr. Subbulakshmi N.Karant	Associate Professor & Head
2	Dr. Ravi Prabha K.	Associate Professor
3	Ms. Swathi	Assistant Professor


Department of Mathematics		
1	Dr. Lolita Priya Castelino	Professor & Head
2	Dr. Renita Sharon Monis	Assistant Professor (SG.)
3	Ms. Bhagyalakshmi Navada	Assistant Professor (Sr.)
4	Ms. Kavyalaxmi	Assistant Professor(Sr.)
5	Ms. Reshma Nayak	Assistant Professor
6	Mr. Sharan Hegde	Assistant Professor
Department of Physics		
1	Dr. Ravindra H J	Professor & Head
2	Dr. Sandhya	Assistant Professor (Sr.)
3	Ms. Sahana S R	Assistant Professor
Department of AI-DS		
1	Dr. Ranjan Kumar H S	Associate Professor & Head
2	Dr. Shrivathsa T V	Assistant Professor(SG.)
3	Mr. Balachandra R Jogi	Assistant Professor
4	Mr. Sarvesh S Rao	Assistant Professor
5	Ms. Shabana S	Assistant Professor
6	Ms. Shalaka	Assistant Professor
7	Ms. Sthuthi	Assistant Professor
Department of AI-ML		
1	Dr. Rajesh Nayak	Associate Professor & Head
2	Dr. Mamatha I	Associate Professor
3	Dr. Vandana Bhat	Associate Professor
4	Dr. Rashmi Samanth	Assistant Professor (SG.)
5	Dr. Vighnesh Shenoy	Assistant Professor(SG.)
6	Dr. Ganesha Prasad	Assistant Professor(SG.)
7	Ms. Megha Rani	Assistant Professor(Sr.)
8	Ms. Ashwini K	Assistant Professor
9	Ms. Mamatha	Assistant Professor
Department of MBA		
1	Dr. Suraj Francis Norohna	Professor & Director
2	Mr. Varun K	Assistant Professor (Sr)
3	Mr. Steevan Robert Tellis	Assistant Professor (Sr)
4	Ms. Melanie Pius Dsouza	Assistant Professor (Sr)
5	Ms. Aurin Madtha	Assistant Professor
6	Mr. Harish Belman	Visiting Professor
7	Mr. Vinod Dixit	Visiting Professor

[*Faculty member on alternative semester](#)

STUDENT-FACULTY RATIO (SFR) FOR THE YEAR 2025-26

PROGRAM	SANCTIONED STRENGTH	TOTAL NUMBER OF FACULTY	SFR
UG	1890	95	1:19.8
PG	120	57	1:17

8. Profile of the Principal

	
Name	Dr. Nagaraj Bhat
Date of Birth	29/7/1987
Unique ID	1-44730092044
Educational Qualification	B.E, M Tech., Ph D.,
Work Experience	
Teaching	11 years
Research	8 years
Area of Specialization	Weather - Informatics
No. of papers published	National journals: 10 International Journals/Conferences: 40 National Conference: 1 Books published: 1
Research publications	50

9. Fee Structure

Total College Fee	Admission through KEA (Govt seats)	Rs. 115206 (All branches)
	Management quota seats	ME- 90610 ECE – 2,10,610/- AI & DS and AI & ML- 3,10,610/- CSE- Rs. 3,10,610/-
	COMEDK seats	Rs. 2,30,610/-(All branches)
Schedule for payment of fee	Soon after the allotment of the seat for First-year students and before reopening of Odd sem. from II year onwards	

*fee includes the University Registration Fee

**No. of Fee waivers granted with amount and name of students admitted under
AICTE supernumerary quota during 2025-26**

Sl. No	Name of the student	CET rank	Branch	Fee
1	HAYA IRSHAD	26102	AI-DS	31,360.00
2	PADMINI M HEGDE	27576	AI-DS	31,360.00
3	GLENSTON CHRIS DIAS	10946	AI-DS	31,360.00
4	RIDA	45150	AI-ML	31,360.00
5	NEHA H	28837	AI-ML	31,360.00
6	SHRAVYA	39308	AI-ML	31,360.00
7	ANKITHA SHANUBHOUGH	17796	CSE	31,360.00
8	TANISHA SUDHAKAR MOOLLYA	22308	CSE	31,360.00
9	AMRUTHA ADIGA	5979	CSE	31,360.00
10	SHREYA RAO	21481	CSE	31,360.00
11	SAHANA	24557	CSE	31,360.00
12	SRIVATSA RAO	24633	CSE	31,360.00
13	SAGAR SIDDAPPA JAGGALA	27873	CSE	31,360.00
14	PRATHAM T NAYAK	21172	CSE	31,360.00
15	THRUSHA	22807	CSE	31,360.00
16	HARSHAVARDHAN	49991	ECE	31,360.00
17	CHAITRA	58473	ECE	31,360.00
18	SHRESHTA N SHETTY	43436	ECE	31,360.00
19	MANVITH L	38359	ECE	31,360.00
20	KAVYA KULAL	61198	ECE	31,360.00
21	RAKSHA KAMATH	59299	ECE	31,360.00
22	MOHAMMAD RAIZ	86350	MECH	31,360.00
23	RAKSHA	61178	MECH	31,360.00

The number of scholarships offered by the institution and its supporters, duration, and amount (2024-25) are as follows:

Sl. No	SCHOLARSHIP SPONSORS	NO. OF STUDENTS	SANCTIONED AMOUNT
1	SCHOLARSHIP FROM SODE VADIRAJA MUTT EDUCATION TRUST		
	FESS CONCESSION FOR 1ST YEAR STUDENTS(MERIT)	104	2585000
	SCHOLARSHIP FOR OTHERS	68	1177530
2	PROFICIENCY PRIZES FROM THE INSTITUTE	15	15000
3	SODE MUTT TRUST SCHOLARSHIP	3	30000
4	GOWTHAMA FOUNDATION	9	54000
5	MADHWA VADIRAJA PRASHASTHI -BEST OUTGOING (BOY) AWARD	1	10000
6	MADHWA VADIRAJA PRASHASTHI -BEST OUTGOING (GIRL) AWARD	1	10000
7	VIDYA POSHAK SCHOLARSHIP (YAKSHAGAANA KALARANGA)	25	485000
8	SITARAM JINDAL FOUNDATION	72	952900
9	RAMAKRISHNA MISSION ASHRAMA	4	24000
10	SMT TONSE PADMAVATHIAMMA & SRI SUBANNA P UDUPI MEMORIAL TRUST	16	160000
11	HAYAVADANA PRASHASTHI 2024-25 INSTITUTED BY DR. MADHUSUDHAN ATRE BANGALORE	1	10000
12	HAYAVADANA PRASHASTHI 2024-25 INSTITUTED BY MR. CHINNAYYA ACCENTURE IN AUSTRALIA	1	10000
13	RELIANCE FOUNDATION UNDERGRADUATE SCHOLARSHIPS (RENEWAL)	2	100000
14	INDIA BULS FOUNDATION	1	90000
15	JSW FOUNDATION	16	800000
16	U GO SCHOLARSHIP	1	50000
17	IEEE SCHOLARSHIP	5	250000
18	SANTHOOR SCHOLARSHIP	3	90000
19	SALIGRAMA GURU NARASIMHA TREMPLE SCHOLARSHIP	16	1668240
20	NACH SCHOLRAHIP TO NEHA 4MW23AD023, 4MW23CS046 (RENEWAL)	2	145810
21	SOUTH KANARA DRAVIDA BRAHMIN ASSOCIATION (RENEWAL)	1	25000
22	BUDDY4STUDY SCHOLARSHIP FOR RURAL STUDENTS - SINCHANA SHERIGAR 22CS153 (RENEWAL)	1	45000
23	SHREE RAMANATH DEVASTHANA CHARITIES	1	25000
24	AMMEMBAL SUBBA RAO PAI MEMORIAL FUND SCHOLARSHIP(RENEWAL)	1	25000
Total Non Government Scholarship		370	8837480

9. Admission

No. of Seats sanctioned with the year of approval: <https://sode-edu.in/smvitm/wp-content/uploads/2026/01/AICTE-EOA-Report-2025-26-2.pdf>

Number of students admitted under various categories in last three years

Year	Sanctioned Intake	Government Seats**	Management Admissions	Total
2025-26	480	182	146	328
2024-25	450	203	225	428
2023-24	480	208	238	446

*excluding 5% seats of SNQ **including 5% SNQ

Number of applications received during last three years for admission under Management quota and number of students admitted

Year	Applications received	No. of students admitted
2025-26	321	146
2024-25	382	225
2023-24	332	238

10. Admission Procedure

Following are the guidelines for the candidates seeking admission at SMVITM. Admission to First Year Program: Admission is granted in accordance with the rules and regulations enforced by the All India Council for Technical Education (AICTE), New Delhi and Govt. of Karnataka (GOK) from time to time.

The eligibility to get admission to engineering programs:

The candidate should have passed in 2nd PUC / 12th Std. with English as one of the languages and obtained a minimum of 45% marks in aggregate in Physics and Mathematics along with Chemistry / Biotechnology / Biology / Electronics / Computer as the third subject. For SC, ST, Cat-1, 2A, 2B, 3A & 3B category candidates of Karnataka, the minimum percentage of marks to get the engineering admission is 40%.

Aspiring students shall take up the Common Entrance Test (CET) conducted by the Karnataka Examinations Authority (KEA) and get admitted through the KEA counseling process. The details about the Common Entrance Test and KEA counseling process will be notified by the GOK in all leading newspapers. A few management seats are also available in the institution. The students seeking management seats shall meet the college authorities.

Lateral Admission to Second Year Program for Diploma/B.Sc. candidates:

The students who wish to join the second-year program through lateral entry shall follow the KEA norms for lateral admissions. The Successful Diploma / B. Sc students are eligible to get admitted to the second year of Engineering through Lateral Admission. Such candidates should have passed a three-year diploma course from an AICTE-approved institution with a minimum of 45% marks in aggregate in the appropriate branch of Engineering / Technology (40% marks for SC, ST, Cat-1, 2A, 2B, 3A & 3B category candidates).

OR

Passed B. Sc Degree from a UGC recognized University with a minimum of 45% marks in aggregate (40% marks for SC, ST, Cat-1, 2A, 2B, 3A & 3B category candidates of Karnataka) and passed 12th Std. with Mathematics as one of the subjects.

11. Criteria and weightage for admission

Submission of Application form:

Candidates who wish to join the Institute can visit the institution and submit the application form. The application form costs Rs. 2000/- . The application form can also be obtained through post by paying an amount of Rs 2100.00 (Rs 2000 + Rs 100 towards postal expenses) by a DD (in favor of "Shri Madhwa Vadiraja Institute of Technology & Management" Payable at Udupi.) or through NEFT and provide us the Address and Mobile Number through an email to info@sode-edu.in.

Bank details for making payment

Bank Name: HDFC Bank

Branch: Shirva

A/c Type: CURRENT

A/c Name: SHRI MADHWA VADIRAJA INSTITUTE OF TECHNOLOGY & MANAGEMENT

A/c number: 50100303818541

IFSC: HDFC0009540

Government seat allocation:

Students seeking Government seats shall attend the Common Entrance Test conducted by the Karnataka Examination Authority. For more details about the admission, the candidate is advised to visit the website www.kea.kar.nic.in

COMEDK seat allocation:

The institute offers 30% of the UG program seats in each program through COMEDK. The student seeking a COMEDK seat shall attend the Common Entrance Test conducted by the COMEDK. For more details about the admission, the candidate is advised to visit the website www.comedk.org

Management seat allocation:

The institute admits 25% of the UG seats in each program through management quota based on the merit list prepared after the institute level entrance test.

- Date of inviting application from : 30 March 2025
- Last date for the submission of application form : 10 April 2025
- Entrance test date (offline) : 15 April 2025
- Announcement of merit list (institute website) : 30 April 2025
- Last date for admission : 15 September 2025
- Last date for closing the admission : 15 September 2025

12. List of applicants (2025-26):

Sl. No	Name of the candidate	Program	% marks in the qualifying exam
1	PANNAGA BHAT	AI-DS	68%
2	POORNA PRAJNA KULKARNI	AI-DS	68%
3	PRAKRUTHY L	AI-DS	57%
4	A KRISHNA BHAT	AI-DS	91%
5	CHETHAN D ACHARYA	AI-DS	80%
6	AKASH AMIN	AI-DS	68%
7	SHAMANTH C P	AI-DS	59%
8	MANANYA SAPALIGA	AI-DS	79%
9	SRAJANA R BILLAVA	AI-DS	77%
10	PRATHVI	AI-DS	73%
11	HEENA PARWEEN	AI-DS	71%
12	SANJANA A SUVARNA	AI-DS	71%
13	KAUP JUNAID ALI	AI-DS	67%

14	ASHISH CORNELIO	AI-DS	62%
15	NITESH KANCHAN	AI-DS	55%
16	SHREENIDHI DEVADIGA	AI-DS	53%
17	KAVYA S SUVARNA	AI-DS	50%
18	SRI DEVI K	AI-DS	88%
19	TANVISH R KUNDER	AI-DS	81%
20	DEEKSHA POOJARY	AI-DS	81%
21	CHIRAG G POOJARY	AI-DS	71%
22	SHAMANTH V SALIAN	AI-DS	65%
23	RISHABH HAREESH KUMAR	AI-DS	61%
24	SHREYA	AI-DS	79%
25	KIRAN	AI-DS	76%
26	GOUDAPPAGOUDA BHARAMAGAUDRA	AI-DS	78%
27	RATHESH RAVEESHA POOJARY	AI-DS	78%
28	NIKIL RAMA TEJA REDDY D H	AI-DS	77%
29	DEEPALI	AI-DS	71%
30	MANJUNATH C N	AI-DS	54%
31	BHUSHAN G	AI-DS	78%
32	T S RITIKA	AI-DS	69%
33	VISHRUTH VENUGOPAL	AI-DS	52%
34	VISHWAROOP	AI-ML	74%
35	SUMAN K S	AI-ML	62%
36	ANANTHESHWARA SOMAYAJI	AI-ML	69%
37	FAUWAZ SHAFI NAKWA	AI-ML	66%
38	SATHWIK J POOJARY	AI-ML	66%
39	MANASA H	AI-ML	85%
40	NAVYA POOJARY	AI-ML	83%
41	SUMANTH	AI-ML	81%
42	VIBHA MANJUNATH	AI-ML	80%
43	MOHAMMED SAHAL	AI-ML	77%
44	SANJANA NAGARAJ SHET	AI-ML	76%
45	SHAWN SALIS	AI-ML	74%
46	SAGAR R MOGAVEERA	AI-ML	70%

47	TEJASWINI D PALAN	AI-ML	69%
48	PRAJWAL	AI-ML	63%
49	MOHAMMED HUZAIFA HAWALDAR	AI-ML	54%
50	KANCHAN SAMIKSHA NAVIN	AI-ML	45%
51	AADHYA ADIGA	AI-ML	79%
52	RAJATH	AI-ML	71%
53	JEEVAN	AI-ML	69%
54	SHREYAS N ACHARYA	AI-ML	55%
55	ABHISHEK BABU MOOLYA	AI-ML	77%
56	SHREESHA S ACHARYA	AI-ML	45%
57	SUSHMITHA SHASHIDHAR HARIDAS	AI-ML	80%
58	NIKHIL V SHETTY	AI-ML	69%
59	SHUBHAN B	AI-ML	58%
60	SHAHIN BANU	AI-ML	83%
61	SINCHANA B KADLURU	AI-ML	80%
62	PRATHVISHA	AI-ML	78%
63	SHRAVYA KUSUMAKAR BANGERA	AI-ML	76%
64	DILWAR H H	AI-ML	74%
65	SWATI CHANDRU TAMADADDI	AI-ML	71%
66	JAMBANNA	AI-ML	52%
67	NITESH K G	AI-ML	74%
68	SANKETH KULAL	AI-ML	73%
69	ADARSH	AI-ML	81%
70	PRERITHA	AI-ML	79%
71	NIDHI P SHETTY	CSE	98%
72	ANANYA A SHETTY	CSE	82%
73	ARJUN H S	CSE	81%
74	RANJAN SHETTY	CSE	80%
75	ADITYA NAYAK	CSE	78%
76	ANAGHA S	CSE	71%
77	PRIYANKA	CSE	71%
78	BRIJESH	CSE	65%
79	PRATHIKSHA	CSE	89%
80	ULLAS	CSE	84%

81	SPANDANA	CSE	82%
82	MANIKYA M	CSE	81%
83	CHAITRA V K	CSE	73%
84	DHEERAJ D KINI	CSE	71%
85	SOWJANYA NAYAK	CSE	71%
86	DEEPA	CSE	70%
87	RASHAWN SAMUEL KUNDER	CSE	67%
88	SANVI	CSE	63%
89	SHRIVATHSA	CSE	56%
90	G P PREETHAM	CSE	47%
91	KEERTHANA C	CSE	87%
92	HARSHITHA	CSE	85%
93	ANVITHA R PRABHU	CSE	84%
94	MANYA	CSE	84%
95	PRATHIBHA	CSE	83%
96	PRANATHI BHAT	CSE	82%
97	THANUJA	CSE	81%
98	SHASHMITH SHENOY	CSE	81%
99	VEDESHA	CSE	78%
100	DHEEKSHA G R	CSE	77%
101	VEDANTH S NAGARAMATH	CSE	77%
102	ADYA R NAYAK	CSE	76%
103	ADITYA SUBRAMANYA BHAT	CSE	74%
104	SINCHANA	CSE	74%
105	PRECIA JASMINE SOANS	CSE	72%
106	DISHA	CSE	71%
107	G P PRAGNA	CSE	71%
108	POORVI S JOGI	CSE	70%
109	MANVITH	CSE	67%
110	PRAGATHI SHETTY	CSE	65%
111	C ANISH RAO	CSE	61%
112	ANUSHA P	CSE	90%
113	SOUMYA V DYAMANAGOUDAR	CSE	90%
114	KAVYASHREE	CSE	87%

115	SAGAR U SUVARNA	CSE	86%
116	PRAJATH	CSE	85%
117	DHYAN KULAL	CSE	82%
118	SHWETHA S POOJARY	CSE	81%
119	SHARADA	CSE	81%
120	SHILPA SHIROL	CSE	71%
121	VAISHNAVI	CSE	66%
122	SHREEKALA	CSE	90%
123	TEJAS G	CSE	71%
124	GANIGA VRINDA BHASKAR	CSE	71%
125	NIHAL D SALIAN	CSE	70%
126	SATHVIK R NAYAK	CSE	65%
127	BHOOMIKA P RAO	CSE	77%
128	ANARGHYA BORKAR	CSE	70%
129	AKSHAY NAIK	CSE	57%
130	NARASIMHA KHASNIS	CSE	79%
131	LAXMI KANTAPPA INGALESHWAR	CSE	76%
132	BHAVYA	CSE	71%
133	SRAJAN POOJARY	CSE	69%
134	MEGHA	CSE	66%
135	SHRIDEVI	CSE	82%
136	POOJA	CSE	81%
137	SUDHIKSHA	CSE	80%
138	KALPANA	CSE	80%
139	SHRINIDHI	CSE	76%
140	SUDARSHAN S	CSE	71%
141	ESHAN C ACHARYA	CSE	68%
142	NAVANEETH SHETTIGAR	CSE	67%
143	KRISHNAKUMAR LAMANI	CSE	60%
144	V AJAY KUMAR	CSE	60%
145	PREETHAM	CSE	82%
146	MRINAL A SANIL	CSE	82%
147	ASHMITHA V ACHARYA	CSE	79%
148	ANKITH SURESH KOTIAN	CSE	79%

149	SANJANA KULKARNI	CSE	78%
150	MANISH	CSE	77%
151	SPANDANA	CSE	73%
152	SHARAN SHIVANANDA HARIKANTRA	CSE	70%
153	NAVYA	CSE	67%
154	MANOJ J	CSE	66%
155	NIRANTHARA M G	CSE	53%
156	PRASAD KULAL	CSE	83%
157	AKSHATHA S	CSE	81%
158	ANIKA M	CSE	74%
159	ANANTHARAMA HOLLA P	ECE	81%
160	P SATHWIK SHENOY	ECE	62%
161	PRASHUL V POOJARY	ECE	72%
162	GAGAN RAJU NAIK	ECE	66%
163	KEERTHAN	ECE	64%
164	ANISH	ECE	59%
165	NISHANTH NAGARAJ NAIK	ECE	52%
166	KRUTHIKA	ECE	84%
167	ANANT HEBBAR	ECE	77%
168	SHASHWATHI	ECE	74%
169	SHREYAS S ACHARYA	ECE	73%
170	ADHYA V S	ECE	69%
171	HARSHIL SHETTY	ECE	67%
172	PRATHVIRAJ	ECE	64%
173	SAYYED YOUSUF ZAIN	ECE	64%
174	PRAJWAL SHETTY	ECE	61%
175	TIRUMALA MARUTI NAIK	ECE	60%
176	SHISHIR RAMAMOORTHY	ECE	57%
177	H V HAMSIKA	ECE	54%
178	SHETTY RUPESH PRAKASH	ECE	77%
179	PREETHAM SHETTIGAR	ECE	72%
180	PREETHAM	ECE	69%
181	MANTHAN	ECE	64%
182	ABHINANDANA BHATTA	ECE	63%

183	HARSHAVARDHAN	ECE	80%
184	RANJANISHREE BHAT	ECE	81%
185	VARSHASHREE B K	ECE	79%
186	B VAISHNAVI	ECE	78%
187	BHOOMIKA	ECE	70%
188	M ROHITH	ECE	77%
189	ABHISHEK R JOSHI	ECE	56%
190	PRATHVI	ECE	83%
191	M S SUDARSHAN BHAT	ECE	82%
192	PRAJWAL U AMIN	ECE	82%
193	DHEERAJ	ECE	81%
194	ABHISHEK ACHARYA	ECE	77%
195	SANNIDHI SHETTY	ECE	70%
196	DHANUSH S POOJARY	ECE	62%
197	POOJA K O	ECE	60%
198	PAVAN H	ECE	56%
199	AKASH SHANKAR MUKRI	ECE	56%
200	SAMPATH	ECE	82%
201	JNANESH L	ECE	74%
202	PREETHAM BASAVARAJ KESARALLI	ECE	82%
203	RAKSHA	ECE	75%
204	AVINASH M	ECE	51%
205	ETHAN MARTIN DALMEIDA	Mech	68%
206	CHANDRASHEKAR POOJARY	Mech	57%
207	ADITHYA G ACHARYA	Mech	55%
208	SHRINIDHI S HEGDE	Mech	48%
209	NIHAL JAYAKAR POOJARY	Mech	47%
210	POOJITH S BHANDARY	Mech	78%
211	YASHAS	Mech	60%
212	AVIRATHA R PRABHU	Mech	58%
213	SRUJAL JACOB DSOUZA	Mech	47%
214	PALLAVI S	Mech	81%
215	ARJUN POOJARI MADAVU	Mech	70%
216	PREETHAM R SHETTY	Mech	65%

217	DHANUSH D PRABHU	Mech	54%
218	HARSHITHA R PRABHU	Mech	69%
219	SHARAN	Mech	67%
220	JANICE NEHA RODRIGUES	Mech	63%
221	SAMARTH SHRENIK KHOT	Mech	72%
222	SHREYAS	Mech	67%
223	RAMYA	Mech	53%
224	VIKYATH	Mech	72%
225	PRAMOD	Mech	65%

13. Results of Admission under Management Seats/Vacant Seats

The management seat allotment details

Sl.No	Name of the candidate	Program	% marks in qualifying exam	Merit (Rank)
1	A KRISHNA BHAT	AI-DS	91%	2
2	AKASH AMIN	AI-DS	68%	148
3	ASHISH CORNELIO	AI-DS	62%	181
4	CHETHAN D ACHARYA	AI-DS	80%	53
5	CHIRAG G POOJARY	AI-DS	71%	120
6	DEEKSHA POOJARY	AI-DS	81%	42
7	HEENA PARWEEN	AI-DS	71%	123
8	KAUP JUNAID ALI	AI-DS	67%	156
9	KAVYA S SUVARNA	AI-DS	50%	219
10	MANANYA SAPALIGA	AI-DS	79%	61
11	NITESH KANCHAN	AI-DS	55%	206
12	PANNAGA BHAT	AI-DS	68%	151
13	POORNA PRAJNA KULKARNI	AI-DS	68%	152
14	AADHYA ADIGA	AI-ML	79%	59
15	ABHISHEK BABU MOOLYA	AI-ML	77%	85
16	ANANTHESHWARA SOMAYAJI	AI-ML	69%	141
17	FAUWAZ SHAFI NAKWA	AI-ML	66%	162
18	JEEVAN	AI-ML	69%	142
19	KANCHAN SAMIKSHA NAVIN	AI-ML	45%	225
20	MANASA H	AI-ML	85%	11
21	MOHAMMED HUZAIFA HAWALDAR	AI-ML	54%	210
22	MOHAMMED SAHAL	AI-ML	77%	79
23	NAVYA POOJARY	AI-ML	83%	21
24	PRAJWAL	AI-ML	63%	179
25	RAJATH	AI-ML	71%	124
26	ADITYA SUBRAMANYA BHAT	CSE	74%	96

27	ADYA R NAYAK	CSE	76%	92
28	AKSHATHA S	CSE	81%	48
29	ANAGHA S	CSE	71%	126
30	ANANYA A SHETTY	CSE	82%	23
31	ANUSHA P	CSE	90%	3
32	ANVITHA R PRABHU	CSE	84%	14
33	ARJUN H S	CSE	81%	41
34	BRIJESH	CSE	65%	168
35	C ANISH RAO	CSE	61%	186
36	CHAITRA V K	CSE	73%	104
37	DEEPA	CSE	70%	135
38	DHEEKSHA G R	CSE	77%	77
39	DHEERAJ D KINI	CSE	71%	117
40	DHYAN KULAL	CSE	82%	29
41	DISHA	CSE	71%	113
42	G P PRAGNA	CSE	71%	121
43	G P PREETHAM	CSE	47%	222
44	GANIGA VRINDA BHASKAR	CSE	71%	122
45	HARSHITHA	CSE	85%	12
46	KAVYASHREE	CSE	87%	9
47	KEERTHANA C	CSE	87%	8
48	MANIKYA M	CSE	81%	49
49	MANVITH	CSE	67%	160
50	MANYA	CSE	84%	16
51	NIDHI P SHETTY	CSE	98%	1
52	NIHAL D SALIAN	CSE	70%	133
53	POORVI S JOGI	CSE	70%	138
54	PRAGATHI SHETTY	CSE	65%	169
55	PRAJATH	CSE	85%	13
56	PRANATHI BHAT	CSE	82%	31
57	PRATHIBHA	CSE	83%	18
58	PRATHIKSHA	CSE	89%	6
59	PRECIA JASMINE SOANS	CSE	72%	111
60	PRIYANKA	CSE	71%	128
61	RANJAN SHETTY	CSE	80%	55
62	RASHAWN SAMUEL KUNDER	CSE	67%	158
63	ABHINANDANA BHATTA	ECE	63%	178
64	ADHYA V S	ECE	69%	144
65	ANANT HEBBAR	ECE	77%	75
66	ANANTHARAMA HOLLA P	ECE	81%	39
67	ANISH	ECE	59%	194
68	GAGAN RAJU NAIK	ECE	66%	164
69	H V HAMSIKA	ECE	54%	211
70	HARSHIL SHETTY	ECE	67%	155
71	KEERTHAN	ECE	64%	173

72	KRUTHIKA	ECE	84%	15
73	MANTHAN	ECE	64%	174
74	NISHANTH NAGARAJ NAIK	ECE	52%	216
75	P SATHWIK SHENOY	ECE	62%	184
76	PRAJWAL U AMIN	ECE	82%	25
77	PRAJWAL SHETTY	ECE	61%	185
78	ADITHYA G ACHARYA	Mech	55%	205
79	ARJUN POOJARI MADAVU	Mech	70%	132
80	CHANDRASHEKAR POOJARY	Mech	57%	197
81	DHANUSH D PRABHU	Mech	54%	208
82	ETHAN MARTIN DALMEIDA	Mech	68%	150
83	HARSHITHA R PRABHU	Mech	69%	145
84	JANICE NEHA RODRIGUES	Mech	63%	180
85	NIHAL JAYAKAR POOJARY	Mech	47%	221
86	PALLAVI S	Mech	81%	43
87	POOJITH S BHANDARY	Mech	78%	67
88	PREETHAM R SHETTY	Mech	65%	171

The vacant seats are allotted to the following waitlisted candidates

Sl.No	Name of the candidate	Program	% marks in qualifying exam	Merit (Rank)
1	PRAKRUTHY L	AI-DS	57%	198
2	PRATHVI	AI-DS	73%	105
3	RISHABH HAREESH KUMAR	AI-DS	61%	187
4	SANJANA A SUVARNA	AI-DS	71%	125
5	SHAMANTH C P	AI-DS	59%	193
6	SHAMANTH V SALIAN	AI-DS	65%	167
7	SHREENIDHI DEVADIGA	AI-DS	53%	213
8	SRAJANA R BILLAVA	AI-DS	77%	83
9	SRI DEVI K	AI-DS	88%	7
10	T S RITIKA	AI-DS	69%	143
11	TANVISH R KUNDER	AI-DS	81%	40
12	VISHRUTH VENUGOPAL	AI-DS	52%	217
13	SAGAR R MOGAVEERA	AI-ML	70%	130
14	SANJANA NAGARAJ SHET	AI-ML	76%	90
15	SATHWIK J POOJARY	AI-ML	66%	163
16	SHAWN SALIS	AI-ML	74%	102

17	SHREESHA S ACHARYA	AI-ML	45%	224
18	SHREYAS N ACHARYA	AI-ML	55%	207
19	SUMAN K S	AI-ML	62%	183
20	SUMANTH	AI-ML	81%	36
21	TEJASWINI D PALAN	AI-ML	69%	139
22	VIBHA MANJUNATH	AI-ML	80%	57
23	VISHWAROOP	AI-ML	74%	94
24	SAGAR U SUVARNA	CSE	86%	10
25	SANVI	CSE	63%	177
26	SATHVIK R NAYAK	CSE	65%	172
27	SHARADA	CSE	81%	46
28	SHASHMITH SHENOY	CSE	81%	47
29	SHILPA SHIROL	CSE	71%	118
30	SHREEKALA	CSE	90%	4
31	SHRIVATHSA	CSE	56%	202
32	SHWETHA S POOJARY	CSE	81%	44
33	SINCHANA	CSE	74%	98
34	SOUMYA V DYAMANAGOUDAR	CSE	90%	5
35	SOWJANYA NAYAK	CSE	71%	129
36	SPANDANA	CSE	73%	107
37	SUDHIKSHA	CSE	80%	51
38	THANUJA	CSE	81%	37
39	ULLAS	CSE	84%	17
40	VAISHNAVI	CSE	66%	166
41	VEDANTH S NAGARAMATH	CSE	77%	84
42	VEDESHA	CSE	78%	74
43	PRASHUL V POOJARY	ECE	72%	112
44	PRATHVIRAJ	ECE	64%	175
45	PREETHAM	ECE	69%	147
46	PREETHAM SHETTIGAR	ECE	72%	108
47	SAYYED YOUSUF ZAIN	ECE	64%	176
48	SHASHWATHI	ECE	74%	101
49	SHETTY RUPESH PRAKASH	ECE	77%	82
50	SHISHIR RAMAMOORTHY	ECE	57%	199

51	SHREYAS S ACHARYA	ECE	73%	106
52	TIRUMALA MARUTI NAIK	ECE	60%	190
53	SAMARTH SHRENIK KHOT	Mech	72%	109
54	SHARAN	Mech	67%	159
55	SHREYAS	Mech	67%	154
56	SHRINIDHI S HEGDE	Mech	48%	220
57	SRUJAL JACOB DSOUZA	Mech	47%	223
58	YASHAS	Mech	60%	191

Selection team for admission through Management quota:

Principal and the HODs of Physics, Chemistry and Mathematics.

14. Information on Infrastructure and other resources Available:

Details of Class Rooms, Tutorial Rooms, Laboratories, Drawing hall and Computer Centre

Class Rooms:

Sl. No	Building Number	Building Name	Room Type	Number of Rooms	Total carpet area (m ²)
1	Block A	Administrative Block	Classrooms	17	1514
2	Block B	E&C Block	Classrooms	6	599
3	Block C	Civil & Mechanical Block	Classrooms	5	475
4	Block G	Library Block	Classrooms	2	315

Tutorial Rooms:

Sl. No	Building Number	Building Name	Room Type	Number of Rooms	Carpet area (m ²)
1	Block A	Administrative Block	Tutorial Room	2	88
2	Block B	E&C Block	Tutorial Room	1	34
3	Block C	Civil & Mechanical Block	Tutorial Room	2	90
4	Block G	Library Block	Tutorial Room	1	40

Laboratories:

Sl. No	Building Number	Building Name	Room Type	Number of Rooms	Carpet area (m ²) / No. of computers
1	Block A	Administrative Block	Laboratory	8	742
2	Block B	E&C Block	Laboratory	7	687
3	Block C	Civil & Mechanical lock	Laboratory	4	538
4	Block F	Laboratory Complex	Laboratory	18	1670
5	Block G	Library Block	Laboratory	1	115

CAD Lab:

Sl. No	Building Number	Building Name	Room Type	Number of Rooms	Carpet area (m ²)
1	Block A	Administrative lock	Laboratory	1	107

Computer Center:

Sl. No	Building Number	Building Name	Room Type	Number of Rooms	Carpet area (m ²)
1	Block A	Administrative lock	Computer Lab	1	273

Central examination facility, Number of rooms and capacity of each room

28 rooms with a capacity of 30 students in each room

Online examination facility with number of nodes, internet bandwidth..etc

All systems are connected to the internet, 570 Nodes with 1 GBPS internet bandwidth

Computing Facility:

- Internet Bandwidth: 1 GBPS
- Number and configuration of System: 570 (Dual core, i3, and i5 system processors)
- Total number of systems connected by LAN: 570 (All desktop systems)
- Total number of systems connected by WAN: All systems, also 30 Wi-Fi routers to connect laptops

Major software packages available:

Sl. No.	Name	License / Part No.
1	Windows Server 2008 R2, Std/Ent – Mak B	VQT7Y-WH2QD-3CVJC-2RPKF-6269H
2	Windows Server 2008, Std/Ent Kms B	GR828-PJ39C-MHX6T-PYVWF-GDGMK
3	Windows Server 2008, Std/Ent Mak B	MPWFH-96Y22-FP6PM-RP8TK-44R49
4	Windows Server 2008 R2, Std/Ent Kms B	6KY4B-M7V8D-BD7X9-82Y96-K26YJ
5	Windows Server 2003 R2, X32 Edition	HYK7G-MH6JP-GYH3W-7F6R8-6GPM8
6	WINDOWS 11 Home 56; WINDOWS Professional501	Preloaded
7	Redhat Linux	RHF0377AP-R4
8	Fedora	OPEN SOURCE
9	Ubuntu 22.04	OPEN SOURCE
10	Wisl 8.1 SNGL OLP NL Academic Legalization – 100 Nos.	4HR-00400

Barrier-free built environment for disabled and elderly persons:

Ramps, Lift, Wheelchairs and accessible toilets are made available for disabled and elderly persons. Also, the admin block is provided with a lift facility.

Fire and safety certificate:

Issued by Office of the Chief Fire Officer, Karnataka Fire & Emergency Services, Mangaluru Ref No. 106/FSR/RFO/MR/2025 dated 21/01/2026

Certificate link: <https://drive.google.com/file/d/1eohbffa6njpWwYpLhHsUfjBUgMEzHRZ6/view?usp=sharing>

Hostel Facility:

The hostel facility is available for both boys and girls inside the campus. The Institute has aesthetically designed and ergonomically built separate hostels for boys and girls with all modern amenities and provision for recreational activities along with delicious and nutritious vegetarian food. The hostel administration is taken care of full-time wardens and a faculty member as the chief warden. Adequate water and power supply is ensured round the clock.

Capacity of the hostel: Boys Hostel for 154 students and Girls hostel for 142 students

Estimated cost of hostel accommodation and food charges:

Room Type	No. of rooms	Hostel Charges per annum (Rs)	Food charges per annum (Rs)
2 sharing	42	50,000.00	48,000.00
3 sharing	70	45,000.00	

Library:

The institute is a member of VTU E-consortium and the entire e-resource requirements are met through this membership with an annual membership fee of Rs. 1,00,000 per year and the fee for procuring the resources at Rs. 750/- per student per annum and that of PG at Rs. 1500/- per student per annum. The details about the available library books and resources are given below:

Sl. No	Description	Numbers available
01	Volumes (Engineering)	19802
02	Titles (Engineering)	4406
03	Volumes (Management)	500
04	Titles (Management)	336
Total Title: 4742		Total Volume: 20302
05	Journals (VTU Consortium)	12499
06	e-Books (VTU Consortium)	26970
07	Journals (DELNET) Engineering	911
08	Journals (DELNET) Management	240
09	Digital Library with 10 Computers and Printing and reprography service	
10	Drillbit-Plagiarism Detection Software	
11	Library management software	

E-Library facility / Remote access to library:

The Library uses the Easylib (Entire Automation System for Library) Software package, which is an integrated multi-user library management system that supports all in-house operations of the library. The software consists of modules on Registration, Acquisition, Cataloguing and Accessioning, Circulation, Periodicals, Members, Setup and Security, Digital Library, Online Public Access Catalog (OPAC), In/Out Management, and Reports. The books/journals can be accessed through OPAC, which facilitates the search for books by author, title, and edition. The Easylib package has been made more efficient by bar-coding the entire library collection.

Remote Access: Remote access through the mLibrary mobile App (Anywhere, Anytime Any device). Through the mLibrary mobile app users can access the library subscription and top open-access academic content including eLearning and multimedia at their fingertips. It gives 24*7 access to the resources that are subscribed to by the library and also to the open-access resources.

Library link: <https://sode-edu.in/smvitm/homepage-about/facilities/central-library/>

Laboratory and workshops:

- The list of laboratories available in each department is given below:

Department of AI-DS and AI-ML:

Sl. No	Room Number	Name of the Laboratory	Area (m ²)/ Computers (numbers)	Major facilities available
--------	-------------	------------------------	---	----------------------------

1	F106	Computer Lab 1	81	36 i5 Systems with adequate open-source software
2	F107 and F108	Computer Lab 2 and 3	150	36 i5 Systems with adequate open-source software
3	F109	Computer Lab 4	75	36 i5 Systems with adequate open-source software
4	F110	Computer Lab 5	82	36 i5 Systems with adequate open-source software
5	F111	Computer Lab 6	80	36 i5 Systems with adequate open-source software

Department of Civil Engineering:

Sl. No	Room Number	Name of the Laboratory	Area (m ²)/ Computers (numbers)	Major facilities available
1	C001	Concrete and Highway Materials Lab	290.00	Auto Clave Blaine's air permeability apparatus, Compression testing Machine, Vee bee consistometer, Concrete permeability equipment, Bitumen penetration equipment Bitumen ductility equipment, Marshal stability apparatus, Vibrating table, Mortar mixing machine, Concrete Mixer, Ultrasonic Pulse velocity Machine, Rebound Hammer (Digital)
2		Models Lab	45.00	Various models
3		Applied Engineering Geology Lab	46.00	Mineral Samples, Rock Samples, Models Charts, Mohr's Scale of hardness
4	C106	Computer Aided Design Lab	85.14	Computers – 24 numbers
5	C202	Environmental Engineering Lab	137.00	Electrical conductivity meter (digital), PH meter (digital) BOD incubator, Digital COD measurement device, Spectra Photometer, Flame Photometer, Turbidity meter, Jar test apparatus, Refrigerator, Double Distillation Unit
6	ASB06	Geo Technical Engineering Laboratory	230.00	Hot air oven, Sieve shaker, Compaction apparatus, Permeability apparatus, Unconfined compression test apparatus, Direct shear apparatus, Tri-axial compression, test apparatus with pore pressure equipment Infrared Moisture Meter, Vane Shear Apparatus
7	C002	Surveying Practice Lab	61.50	Plane table with accessories Auto level, Theodolite, Electronic Theodolite, Total Station

Department of Computer Science & Engineering:

Sl. No	Room Number	Name of the Laboratory	Area (m ²)/ Computers (numbers)	Major facilities available
1	A307	Computer Lab 1	102	36 i5 Systems with adequate open source software
2	A309	Computer Lab 2	102	36 i5 Systems with adequate open source software
3	F101	Computer Lab 3	100	36 i5 Systems with adequate open source software
4	F102	Computer Lab 4	92	36 i5 Systems with adequate open-source software
5	F103 and F104	Computer Lab 5 and 6	145	72 i5 Systems with adequate open-source software
6	F111	Computer Lab 7	80	36 i5 Systems with adequate open-source software

Department of Electronics & Communication Engineering

Sl. No	Room Number	Name of the Laboratory	Area (m ²)/ Computers (numbers)	Major facilities available
1	Ground floor	VLSI Lab	76	Arduino kits, Electrical VLSI tool, LTspice
2	I floor	DSP lab	102	MATLAB
4	I floor	Analog and digital Circuit lab/communication lab	102	Digital trainer kits, CRO, Power supplies, ICs, Microwave antenna testbench
5	I floor	Electronic Principle and circuit Lab	102	MultiSim
6	II floor	Project Lab	102	Space for mini project
7	II floor	Electrical Lab	102	Electrical equipment kits

Department of Mechanical Engineering:

Sl. No	Room Number	Name of the Laboratory	Area (m ²)/ Computers (numbers)	Major facilities available
1	F002-2	Foundry & Forging laboratory	100	Smithy Furnaces (coal fired), Anvils, Swage Blocks and Forging Tools.
2	C201-1	Design Laboratory	100	Determination of Natural Frequency, Balancing of Rotating Masses, Critical Speed of a Rotating Shaft, Fringe Constant of Photo Elastic Material, Stress Concentration using Photo Elasticity, Equilibrium Speed, Sensitiveness, Power and Effort of Porter/Prowel /Hartnell Governor, Pressure distribution in Journal bearing, Principal Stresses and strains, Experiments on Gyroscope
3	F002-1	Heat Transfer Laboratory	100	Thermal Conductivity of Metal Rod Apparatus, Composite Wall Apparatus, Pin-Fin Apparatus, Natural Convection Apparatus, Forced Convection Apparatus, Emissivity Measurement Apparatus, Stefan Boltzman's Constant Apparatus, Parallel & Counter Flow Heat Exchanger Apparatus, Critical Heat Flux Apparatus, Condensation Apparatus, Transient Conduction Apparatus.
4	F004	Metallography and Material Testing Laboratory	75	Universal Testing Machine(60 Tons) Mechanical Type, Wear and Friction Tester, Magnetic Crack Detector 1000 amps, Ultrasonic Flaw Detector, Rockwell Cum Brinell Hardness Tester, Vickers Hardness Tester, Fatigue Testing Machine, Impact Testing Machine, Torsion Testing Machine, Trinocular Inverted Microscope.
5	C201-2	Metrology and Mechanical Measurements Laboratory	75	Pressure Gauge Setup, Thermo Couple Setup, L.V.D.T. Setup, Load Cell Set Up, Strain Gauge Setup, Autocollimator Single Axis, Digital Micrometer (0-25mm), Mechanical Comparator, Floating Carriage Micrometer (2 wire / 3 wire), Slip Gauge 83pieces set, Profile Projector, Toolmaker's Microscope, Granite Surface Plates.
6	F001-1	Machine Shop Laboratory	200	All geared Lathe , Belt driven (Cone Pulley Type) Lathes 09 No.s, Universal Surface Grinder, Slotting Machine Milling Machines, Shaping Machines, Radial Drilling Machine, Hydraulic power Hacksaw Machine, Bench Grinder.
7	F001-2	Advanced Manufacturing Center	100	CNC Vertical machining Centre, CNC Lathe
8	F002-1	Hydraulics & Pneumatics Laboratory	68	Hydraulic Trainer KIT (with Powder coated Pannel) Pneumatic Trainer Kit (with Powder coated

				Pannel)
9	F002-2	Fluid Mechanics and Turbomachines Laboratory	232	Combined Pipe Friction & Pipe Fittings Setup, Impact of Jet on Vanes Apparatus, Orifice and Venturimeter combined Setup, Flow Nozzle and Rotometer Combined Set, Notch Apparatus, Single Stage Centrifugal Pump Test Rig, Reciprocating Pump Test Rig, Kaplan Turbine Test Rig, Francis Turbine Test Rig, Pelton Wheel Test Rig
10	A110	Computer Aided Engineering Drawing Lab	178 m ² / (77 Computers)	Acer Veriton (M200 – G41) Systems-74 No.s ,With Intel Core 2 Duo E 7500 Processor, 2GB Ram,160 GB Hard Disk, Drive-SATA, 32 Bit Operating System,18.5" TFT Monitor, OS-Microsoft windows XP, Software-Solid Edge ST2 (with synchronous Technology), HP Laser Jet printer, 20Kva UPS, Vivitek Projector, Network Server Model E5520, LAN- 48 Port Managed Switch & CAT 6 UTP Cable, Accer Veriton M 200 Desktop PC-35 No's with Intel Core i3 12 th Generation 12400 Processor, 8 GB DDR4 Ram, 512GB SSD, 19 TFT Monitor, USB key board Mouse
11	C106	Computer Aided Modeling and Analysis Laboratory	107 m ² / (32 Computers)	32 i3 systems with solid edge, Auto CAD softwares.

Other Laboratories:

Sl. No	Room Number	Name of the Laboratory	Area (m ²)/ Computers (numbers)	Major facilities available
1	AB004	Language Lab	112	Computers, Language ;Lab software
2	AB005	Physics Lab	201	Microscopes, various equipment to conduct first year lab
3	C202	Chemistry Lab	137.00	Electrical conductivity meter (digital), PH meter (digital) BOD incubator, Digital COD measurement device, Spectra Photometer, Flame Photometer, Turbidity meter, Jar test apparatus, Refrigerator, Double Distillation Unit

4	A110	CAD Lab	150	32 si3 systems with solid edge, Auto CAD software
5	A111	Central Computer Center	178	Computers
6	AB001	Research Center (Chemistry)	20	Facilities to conduct research work
7	A301	Research Center (Physics)	20	Facilities to conduct research work
8	F001 (1)	Fabrication Lab	102	CNC Milling center, CNC Lathe, Welding machine, Computers..etc
9	F105	Innovation Lab	55	Texas instrument kits, Make-it Kits, Computers

Institute Innovation Council (IIC):

The innovation council helps to engage students in innovative and creative activities apart from regular academics by providing opportunities for hands-on activities.

Institute Innovation Council is approved by the AICTE with IIC ID: **IC201912596**.

The institute has established the innovation council with the following objectives.

Objectives:

- To create awareness, educate, nurture and inculcate a culture of innovation among engineering students.
- To enable them to generate new ideas and become more innovative.
- To organize an Interdisciplinary project exhibition

Roles and Responsibilities of the Coordinator

- Enrolment of students as Innovation Council members and allow them to work on innovative projects.
- Periodic activities, workshops, and competitions to keep the spark of creativity, innovation, and design alive and thriving in students.
- Guidance for the development of innovative scientific solutions to solve everyday problems.
- To provide technical support in the form of basic tools, shackles, equipment, raw materials, and project manual/report.
- To monitor the activities of the innovation council.
- To encourage the students to apply for various funds for their innovative projects.

Achievements of the Institute Innovation Council (IIC):

- NIRF rank for innovation in the band of 150-300
- Received Rs. 2.25 Lakhs towards mentoring three institutes in innovation.

Institute social media cell:

The institute has established a Social Media Cell headed by a senior faculty member. This cell updates the activities and programs organized in the institute in social media like Facebook, Instagram, and LinkedIn. Also, the cell publishes the institute's promotional information (Text, pictures, and videos) on social media. It also supports in live streaming of programs conducted in the institute.

Compliance of Academic Bank of Credit in the institute: Yes. Implemented.

Short video of the infrastructure and facilities of the institute:

<https://drive.google.com/file/d/1YF8D3f1YLF-2EMV2VPsSCvheqVJaCgiw/view?usp=sharing>

Sports and Games facility:

The Department of Physical Education, in addition to guiding the students in physical activities and organizing sporting events and games, trains and prepares students for various inter-collegiate and University level athletic competitions and tournaments. Facilities for various indoor and outdoor games like carrom, chess, Table Tennis, Shuttle badminton, cricket, volleyball, basketball, handball and throw ball are available for the students. Also, a Multi-gym facility has been provided for the students and staff.

Details of the Department of Physical Education and sports/games facilities:

- Department Office
- Athletic Field & Cricket Field
- Carrom, Chess and Table Tennis facilities
- Basketball court (Outdoor Court, Concrete flooring)
- Shuttle badminton (4 - Outdoor Courts, Interlock flooring)
- Volleyball & Throw ball Court
- Kabaddi Court
- Ground Store Room
- Gymnasium
- Hard Ball Cricket Net Practice

Teaching–Learning Process:

- Curricula and syllabus for each of the Programmes are approved by the University.
<https://vtu.ac.in/en/b-e-scheme-syllabus/#menu0>
- Academic Calendar of the University
<https://vtu.ac.in/en/?s=ACADEMIC+CALENDAR>
- Academic Time-Table of the Institute:
<https://sode-edu.in/smvitm/wp-content/uploads/2026/01/ODD-Sem-Time-Table-2025-2026.pdf>

Soft Skill Training facility:

The institute takes care of soft skill training for the students in the following ways: The soft skill training commences in the third semester BE program and extends up to the seventh semester covering various aspects of soft skill training with almost 30 hours of training per semester. The institute hires trained personnel for this program. Also, few faculty members of the institute are well-versed in soft skill training and the follow-up sessions will be conducted by the internal trainers.

Continuous Internal Evaluation (CIE):

The Semester Examination and Continuous Internal Evaluation procedure are prescribed by Visvesvaraya Technological University, Belagavi and the Institute follows the same. Apart from this, the institute conducts various technical and non-technical events to assess the student's performance.

Formative Assessment

The formative assessment refers to a wide variety of methods that teachers use to conduct in-process evaluations of student comprehension, learning needs, and academic progress during the course. CIE is implemented in academic areas using different evaluation techniques like internal assessment tests, quizzes, seminars, assignments, internships, etc., as prescribed by the university. The performance of the students in the internal assessment tests is regularly recorded and monitored by the mentors in the Cumulative Performance Diary (CPD) as well as in the Institute Management Information System (MIS). Results of internal tests and university examinations are analyzed and meetings are conducted to discuss the performance of the students. Parents of the poor performers are requested to meet the mentors, to have a close discussion about the student's performance. As a part of continuous internal evaluation, students' Leadership qualities, presentation skills, etc. are recorded in CPD by the respective mentors.

Summative Assessment

At the end of the semester, the assessment of students in academic and non-academic areas are included in the summative assessment. The summative assessment in the academic areas, like, the subject knowledge, the skill set of the students, etc. is tested by the university examinations at the end of the semester. Practical courses and seminars are also a part of SEE as per the guidelines of VTU.

15. Placement and Training

The training and placement cell of the institute conducts soft skill, aptitude and technical training to students to enhance the job opportunity. The cell also strives hard to bring the companies for campus recruitment. The Placement process is initiated with a clear focus on all levels of companies that are contacted and invited for the campus recruitment drive which matches all the academic levels of the students.

The placement cell works as a liaising office between the industry and academia in organizing guest lectures, internships, industry visits, industry-linked projects and campus placements. It helps the students to develop contacts with companies while undergoing internships and doing their project work in their final semester.

The college has a fully furnished placement department to conduct the training and interview process. The department has 3 seminar halls, 2 GD rooms, and 8 interview cabins to conduct the campus pool selection process for 500+ students.

Campus placement in last three years with Min/Max/Average salary

Academic Year	No. of job offers to students	Minimum salary	Maximum Salary	Average salary
2022-23	248	3,00,000.00	8,50,000.00	4,20,000.00
2023-24	162	4,00,000.00	8,50,000.00	4,50,000.00
2024-25	343	4,00,000.00	8,50,000.00	4,50,000.00
2025-26	146*	4,00,000.00	9,50,000.00	4,20,000.00

*ongoing

Link for Placement Cell: <https://sode-edu.in/smvitm/b-e-placement-cell/>

List of Research Projects/ Consultancy Work

a. Research Projects Undertaken during the last five years

SLNo.	Dept.	Name of the Project	Name of the PI/CI	Dept. of PI	Year of Award	Amount in Lakh.	Duration	Name of the Funding Agency	Type (Govt/ Non Govt.)
1	ME	Development of Biodegradable Implant Materials	Dr. Gajanan Anne (PI) / Dr. Reenna Kumari (CI)	Mechanical Engineering	2021-22	12 Lakhs	2 Years	Visvesvaraya Technological University, Belagavi Under VTU Research Grants Scheme - 2021	Government

2	ME	Fabrication and Study of Biodegradable Leaf Plates	Dr. Sudarshan Rao K	Mechanical Engineering	2021-22	0.30 Lakhs	6-8 Months	Karnataka Science and Technology Academy, Science and Technology Department, Govt. of Karnataka, Bengaluru Under Short-Term Research Scheme 2021-22	Government
3	ME	Development of High Strength Corrosion Resistant Magnesium Alloy for Biodegradable Implants	Mr. Aditya Kudva S	Mechanical Engineering	2023-24	9.35 Lakhs	3 Years	Ministry of MSME, Government of India for innovative idea under National Level MSME Idea Hackathon 2.0.	Government
4	ME	Development of Tree D-Limber for Shade Trees in Coffee Plantation	Mr. Karthik V	Mechanical Engineering	2023-24	10.625 Lakhs	3 Years	Ministry of MSME, Government of India for innovative idea under National Level MSME Idea Hackathon 2.0.	Government
5	ECE	A Novel Approach for Efficient Text Document Summarization of Kannada Script	Mr. Sachin S Bhat	Electronics & Communication Engineering	2019-20	1 lakh	1 year	Visvesvaraya Technological University (TEQIP)	Non Government
6	ECE	Building Database of Halegannada Characters Used in Kannada Inscription and Study of their Character Recognition Method	Dr. Sachin S Bhat	Electronics & Communication Engineering	2021-22	0.35 lakhs	1 year	Karnataka Science & Technology Academy	Government

7	ECE	Sensor Based Device for Predicting Moisture Content of Agricultural Field and Safe Bearing Capacity of Soil	Dr. Sachin S Bhat	Electronics & Communication Engineering	2021-22	1.25 lakhs	1 year	Karnataka State Council For Science And Technology	Government
8	ECE	Surgical Sponge Detection System	Dr. Sachin S Bhat	Electronics & Communication Engineering	2022-23	11.5 lakhs	1 year	Government of India	Government
9	ECE	To assist the Police department in capturing the accident information on-site with minimal manual inputs and to register an online First Information Report	Dr. Sachin S Bhat	Electronics & Communication Engineering	2022-23	10 lakhs	1 year	Government of Karnataka	Government

b. Research/consultancy related activities

Department: Civil Engineering:			
Sl. No.	Name of the Client	Type of Consultancy	Amount in Rs.
1	Nirmithi Kendra, Udupi	Third Party Consultancy work	8,30,043
2	Panchayath Raj Eng. Dept.	Third Party Consultancy work	1,98,865
3	Saligrama Town Panchayath	Third Party Consultancy work	81,082
4	Kaup Town Panchayat	Third Party Consultancy work	70,174
5	Karnataka Rural Infrastructure Development Ltd	Third Party Consultancy work	14,996
6	RDWSD Udupi	Third Party Consultancy work	745
7	Konkan Railways Ltd. Udupi	Material Test	88,736
8	Vinit S Amin - Grasslands , Udupi	Material Test	47,672
10	Prashanth Engineer & Contractor, Kundapura	Material Test	45,430
11	Laxmi Constuctions, Udupi	Material Test	34,800
12	Harsha Properties Pvt. Ltd Kadapady	Material Test	31,860
13	Harish Shetty (Nirmithi kendra)	Material Test	26,904

14	Harish shetty Mandadi, jeddu karkala	Material Test	21,240
15	G-Nirman Shantharam Hardalli Shetty, Udupi	Material Test	20,060
16	Deviprasad Constuctions, Kaup	Material Test	15,930
17	Admar Matt, Admar	Material Test	11,800
18	Anandathirtha Vidyalaya Pajaka	Stability test	11,800
19	carmel High School, Kemmannu	Stability test	11,800
20	carmel Primary eng. med School, Kemmannu	Stability test	11,800
21	Baliga Fishnet, Udupi	Material Test	11,800
22	Flowers Paradise Public School, Malpe	Stability test	11,800
23	Gundibail HPS	Stability test	11,800
24	Hindu P.U College Shirva	Stability test	11,800
25	Heskuthur Govt. School	Stability test	11,800
26	Krishnanugraha, Fit Institute, udupi	Stability test	11,800
27	M.E.T Eng. Med.	Stability test	11,800
28	Manasa Rehabilitation & Training Centre, Pamboor	Stability test	11,800
29	MSRS College, Shirva	Stability test	11,800
30	Podar International School	Stability test	11,800
31	Radha Vidyanikethan Public School, Thenkanidiyoor	Stability test	11,800
32	Shri Rama Aided Higher Primary School, Majur	Stability test	11,800
33	Shree NarayanaGuru eng Med School Malpe	Stability test	11,800
34	Sri Anantheshwara eng.med School udupi	Stability test	11,800
35	St. Mary's Highschool Kundapura	Stability test	11,800
36	St. Mary's Higher Primary school Kundapura	Stability test	11,800
37	Shrinidhi Enterprises, shirthady	Material Test	11,151
38	Akshay Enterprises	Material Test	10,620
39	Grazlanz Properties LLP	Material Test	10,620
40	Havanje MPC	Material Test	10,620
41	Jayashree Consultants, Malpe	Material Test	10,620
42	Kenjoor MPC	Material Test	10,620
43	Mr. Sunil William Aroza, Korangrapady	Material Test	10,620
44	Malavika Nirmaan, Udupi	Material Test	9,381
45	Bantara yane nadavara sanga thonse	Material Test	6,844
46	Budhagi Engineers & Contractors Pvt.Ltd. Udupi	Material Test	6,136
47	Anugraha Construction mudradi	Material Test	5,900
48	Gyan Enterprises, Udupi	Material Test	5,015
49	Mohammed Suleman	Material Test	4,720

50	M/s SKS Karkala Infra Projects Private Limited	Material Test	4,248
51	Sristi Associates,Kuthyar	Material Test	4,543
52	DK Milk Union, Udupi	Material Test	3,953
53	Sandeep shetty, Udupi	Material Test	3,894
54	Silverline Contructions, Bengaluru	Material Test	2,478
55	Creative P U College, Hirgana	Stability test	2,360

Department: Mechanical Engineering

Sl.no.	Name of the client	Type of consultancy	amount
1	SMVITM, Bantkal	Ceiling Fan Painting (60 Fans)	6000
2	SMVITM, Bantkal	Fabrication of Racks	6000
3	External- Sandeep	S S Plate (Strainer) Drilling Work (1 No)- 350 Holes per Plate)	6000
4	External	Fabrication of Garden Pot stand	1800
5	External- Sandeep	Machining of COP & DRAG	5000
6	External- Sandeep	Shaft Turning- Flange	1000
7	External- Sandeep	Bearing Seating and Profile Milling	3000
8	External-Lingaraj K Ritti, Assistant Professor, Mech,smvitm, Bantakal	Ball Burnishining	3500
9	External-Aditya Kudva S, Assistant Professor, Mech,smvitm, Bantakal	Fabrication of Frame	1000
10	External	Fabrication of M S Frame	354
11	SMVITM, Bantkal	Fabrication of Racks	3000
12	External	Fabrication of G I Tube Stand	3000
13	External- Sandeep	S S Plate(Strainer) Drilling Work (1 No)- 350 Holes per Plate)	4000
14	External- Sandeep	Machining of COP & DRAG	5000
15	SMVITM, Bantkal	Alteration Work of Grill Gate at Bhootaraj Temple	0
16	SMVITM, Bantkal	Rework of Stair Case Railings at Main Building	0
17	External-Dr. Ganesh Aithal, Vice Principal, SMVITM, Bantakal	Fabrication of Clamps	950
18	External- Dr. H Udaya Prasanna, Professor, Mech,smvitm, Bantakal	Fabrication of Garden Stand	2700
19	External- (Mr. Sudarshan Rao, Flower Decorator, Padubidri)	Fabrication of Metal Welcome Arc	4800
20	External-Durga Parameshwari Temple, Nandikoor	Fabrication of Metal Structure	1200

21	External- Sandeep	S S Plate (Strainer) Drilling Work (1 No)- 350 Holes per Plate)	-----
22	External	Pump Mounting Bracket Machining	4000
23	External- Student- GURURAJA S HEBBAR (17me021)	Student Project Work- Profile milling	400
24	External-Student- SHAMAN HEGDE (4MW17ME056)	Student Project Work- Turning and Bearimng Seating	300
25	External-Student- ABHIJITH Civil Engg. Dept.	Student Project Work- Acrylic sheet profile Milling	400
26	External- Manjunatha S, Assistant Professor, Dept. Of Mechanical Engineering, SMVITM, Bantakal	Drilling and Counter Bore, Milling Machine	300
27	External- Mr. Srikanth Shettigar, Lab Supervisor, Dept. Of Mechanical Engineering, SMVITM, Bantakal	Mechanical Work- Bush Turning	500
28	External- Student- SHAMAN HEGDE (4MW17ME056)	Student Project Work- Turning and Bearing Seating	5000
29	External-Student- Prathamesh (4MW17ME045)	Student Project Work- Turning and Bearing Seating	3000
30	External-Student- ABHIJITH Civil Engg. Dept.	Student Project Work- Acrylic sheet profile Milling	1500
31	External-Student- Nidinath V Shetty (4MW16ME050)	Student Project Work- Milling & Turning, Machining	1000
32	External-Sundeet Soares	CNC Milling-Rework Casting & Plate	800
33	External-Principal, NMAMIT, Nitte	CNC Milling Machining Charges	1500
34	External-Ananda Theertha Vidyalaya	Table Mounted Mobile Stand	3800
35	External-Sundeet Soares	S S Plate (Strainer) Drilling Work (1 No)- 350 Holes per Plate)	-----
36	SMVITM, Bantkal	Fabrication Work of Power House Roofing	20000

37	External	Fabrication of Window Grill	4000
38	External	Fabrication of Conch Arc for Decorative Purpose	1000
39	External	Fabrication of Butter Milk Machine Stand	200
40	External	Inspection Report on Chapathi, Poori, Parota Making Machine	5000
41	External	Welding Work of Bio Fuel Stove Stand	100
42	Internal	Fabrication Work of Power House Fencing	15000
43	External	Fabrication of CNC Machining Work	500
44	Internal	Fabrication of Battery stand	1000

45	External	Fabrication Work of Decorative Arc	1500
46	External	Fabrication Work of Decorative item	4000
47	External	Fabrication Work of Windows	1600
48	External	Fabrication Work of Garden Stand	4000
49	External	Fabrication work of Welded Angle Bracket	150
50	External	Fabrication of Frame Work (IRON)	2500
51	External	Inspection Report Submission Car bearing Registration No: KA- 20MB 6790 (Dr. Jayakrishna Nayak)	2000
52	External	Fabrication Work of Decorative Arc	2190
53	External	Fabrication Work to Temple for Decorative Arc	4000
54	External	Fabrication Work of M S Angle Rack(5' * 3')	3040
55	External	Fabrication Work of G I Tube Stand	2400
56	External	CNC Consultancy Work	300
57	External	Fabrication Work Labour Cahrges	2000
58	External	CNC Consultancy Leth Work	300
59	External	Fabrication Work Labour Cahrges	1500
60	External	Fabrication Works	3500
61	External	Fabrication Work	500
62	External	Fabrication Work of Ladder	2400
63	The Principal, NMAMIT, Nitte	CNC Machining Work	1000
64	Mr. Prasad Kumar, Admar, Udupi	Fabrication Work of Ganapathi Idol Stand, Back Support Table & ½ * ½ inch Square Tube- I No.each	5595
65	Dr. Manjunatha S, Assistant Professor (Sl.Grade), Department of Mechanical	Fabrication of Anglar Bracket (Iron)- 4 Nos.	200

	Engineering, SMVITM, Bantakal		
66	Mr. Raghavendra Baila	Fabrication of Frame (Bended)	1950
67	Mr. Moolya Jathin Jaya, Service Supervisor, Pavan Motors Bajaj, Udupi	Fabrication of Shims for Bajaj 3 Wheelers-284 No's	15600
68	The Principal, NMAMIT, Nitte	CNC Machining Work	1000
69	Mr. Prasad Kumar, Admar, Udupi	Fabrication Work of Ganapathi Idol Stand, Back Support Table & ½ * ½ inch Square Tube- I No.each	5595/-
70	Dr. Manjunatha S, Assistant Professor (Sl.Grade), Department of Mechanical Engineering, SMVITM, Bantakal	Fabrication of Anglar Bracket (Iron)- 4 Nos.	200/-

a. MoUs/Collaborations/Linkages

Sl. No.	Name of the MoUs/Collaborations/linkages	Purpose of MoU	Duration of MoUs/Collaborations/linkages	
1	Kakunje Software Pvt Ltd, Manipal	Skill Based training, Internship, Education & Research	3 February 2025	1 Year
2	Capital equipment Service Ltd	Student training	5 October 2023	3 Years
3	St. Mary's College, Shirva	To give training to St. Mary's College students	12 June 2020	5 Years
4	Infosys Limited, Bangalore	Faculty and Student training and development	27 September 2023	5 Years
5	EZ Technologies, Mangaluru	Industrial visits and training, Guest lectures, Placement assistance	21 October 2024	lifetime
6	Quantum Learnings, Delhi	Syudent Internship	24 September 2024	3 Years
7	EduCADD, Udupi	Student traing in Civil and Mechanical modelling and analysis software	01 February 2018	lifetime
8	NITK-Siemens Center of Excellence in Digital Manufacturing (3D Engineering Automation LLP)	Student training, Internships, Faculty Development and	23 October 2024	2 Years

		Curriculum Development		
9	GTTC, Udupi	Industrial visits, In-plant training and Manufacturing works	20 November 2024	2 Years
10	Alar Innovations Pvt. Ltd. Kumta	Internship	09 January 2024	2 Years
11	Govt. Tool room and Training Centre (GT&TC), Udupi	Internship	15 November 2024	2 Years
12	Kakunje Software Pvt Ltd, Manipal	Internship, Workshop, placement assistance, Research and Development, and FDP	02 September 2024	1 Year
13	E-Actuals, Maniapl	Internship	27 November 2024	2 Years
14	Mirafr Software Technologies Pvt.Ltd. Bengaluru	Internship and Training	21 May 2025	3 Years
15	Bajaj Finserv Ltd., and Bajaj Finance Ltd., Pune	conduction of the Certificate Program in Banking, Finance and Insurance	30 April 2025	2 Years
16	Indian Society for Training & development (ISTD)	Training and Development of Students and Faculty members	22 February 2025	2 Years
17	Manjunath Pai Memorial Government First Grade College, Kabettu, Karkala	Training to UG students of MPMGFGC	14 May 2024	lifetime
18	Mangalore Infotech Solutions Pvt. Ltd., Mangalore	Industrial Training & Visit/ Placemnet Training for students	21 March 2023	lifetime
19	10 Seconds	Industrial Training & Visit/ Placemnet Training for students	04 March 2024	3 Years
20	Juego Studios Pvt. Ltd., Bengaluru	Hands on Learning	11 October 2022	3 Years
21	Seventh Sense People development Solutions Pvt. Ltd., Bengaluru	Placement training	08 November 2022	3 Years
22	CodeChef, Bangalore	Technical Training	20 February 2025	1 Year
23	Be Practical Tech Solutions, Bangalore	Aptitude, Technical and softskill training	19 July 2025	3 Years
24	Consortium of Medical, Engineering and Dental Colleges of Karnataka(ComedKares)	Design, Develop and Deliver the the value added course	05 February 2024	3 Years
25	Section Infin 8 Foundation, Managlore	Developing Enterprise and Start-up Ecosystem Training & Development	24 October 2024	1 Year

		program on entrepreneurship		
26	Kanara Chamber of Commerce & Industry, Mangalore	Industry - Academia Collaboration through industry visits, internship, placement opportunities, consultancy works, and other skilling up programs for faculty members and students	05 May 2025	1 Year
27	Manipal Academy of Higher Education, Manipal	To foster collaboration, provide opportunity for global experience	15 February 2023	3 Years
28	Council of Scientific and Industrial Research(CSIR-4PI) Bangalore	Training opportunities, joint research projects, internships, specialized programs like SPARK and JIGYASA, and collaborative academic guidance	03 April 2025	5 Years
29	Reference Globe, Hyderabad	Placement assistance	26 September 2019	life time
30	Laven Health Services Private Limited	Skill based training	12 February 2023	3 Years
31	Manipal Skill Development Center, (MSDC), Manipal	Student training and Internship	4 June 2024	3 Years
32	Hitech Medicare Hospital, Udupi	Health Care Services	24 July 2024	2 Years
33	Poorna Prajna Institute of Management, Udupi	Academic collaboration	21 March 2021	5 Years
34	Manel Srinivas Nayak Institute of Management (MSNIM) Mangluru	Provide Academic related Activities, Research and Consultancy for students	12th January 2021	5 Years
35	Confederation of Indian Industry	Industry - Academia Collaboration through industry visits, internship, placement opportunities, consultancy works, and other skilling up programs for faculty members and students	1 January 2025	1 Year
36	NITTE Deemed to be University	Collaborative Research, IPR support, Student and Faculty	29 July 2025	3 Years

		Participation, Joint Conferences and Workshops, Faculty Involvement in Committees, Student Exchange for Programs, Mutual Student Associations and Forums, Sharing of Instrumentation Facilities, Support for Research and Entrepreneurship, Joint Funding Applications, Joint Curriculum Development, Joint Supervision of Postgraduate and PhD Projects and Theses		
37	MAHE, Manipal	Collaborative Research and IPR, Student and Faculty exchange, Joint Events and Curriculum, Faculty Engagement and Supervision, Shared Resources and Innovation support	22 August 2025	3 Years
38	Alar Innovations Pvt. Ltd. Kumta	promote research, Innovation, product development and skill building	22 November 2025	2 Years
39	SDM College of Ayurveda, Udhyavara, Udupi	Mutual collaboration between the Ayurveda Partner and the Tech Partner in areas of technology integration, healthcare innovation, academic exchange	23 September 2025	5 years